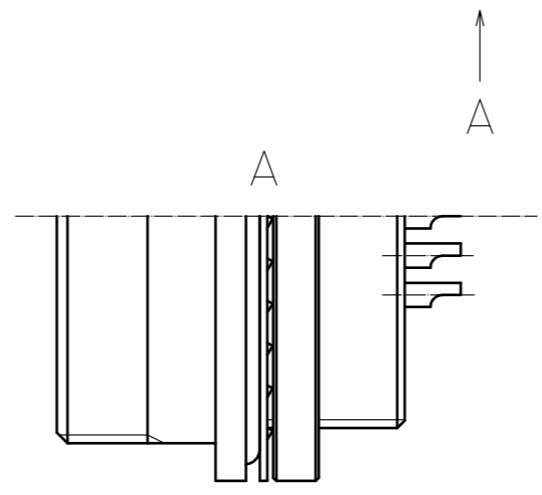
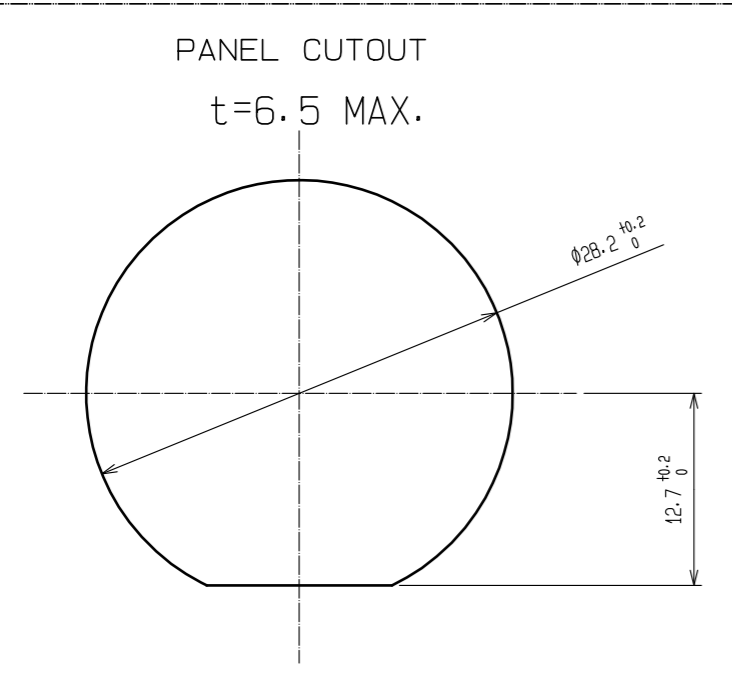
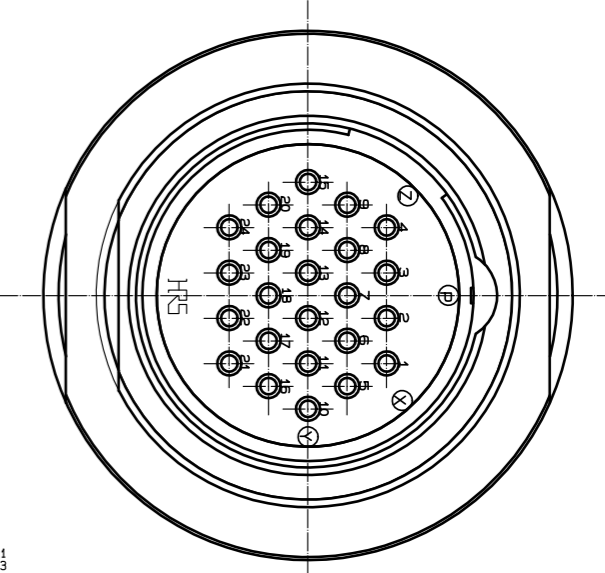
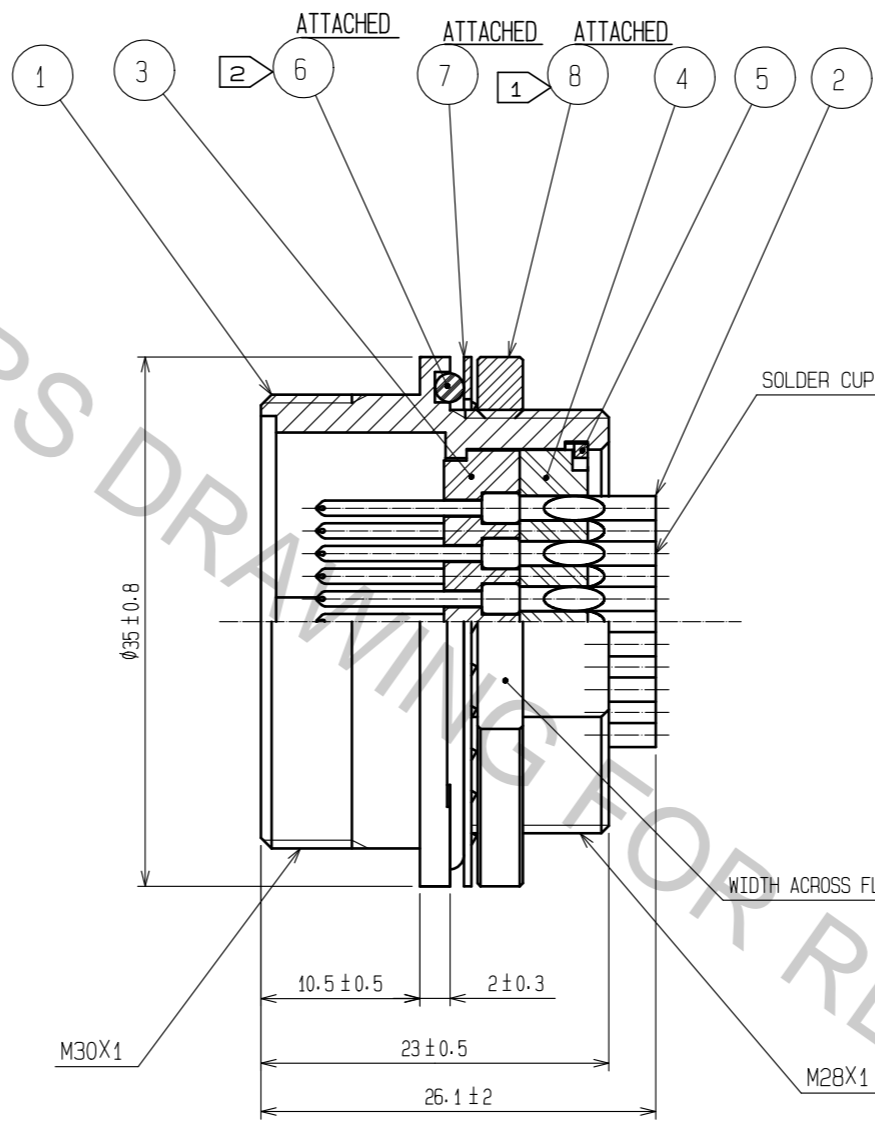
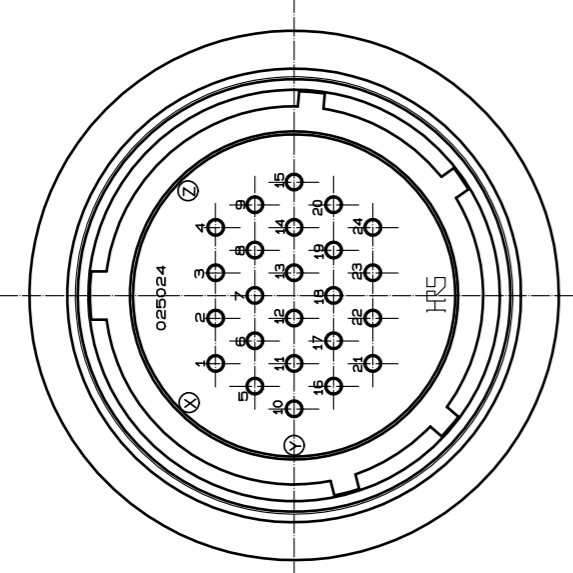


Aug.1.2018 Copyright 2018 HIROSE ELECTRIC CO., LTD. All Rights Reserved.
 In case that the application demands a high level of reliability, such as automotive,
 please contact a company representative for further information.



NOTES ① THE RECOMMENDED CLAMP TORQUE OF REF.No. ⑧ TO BE 2 TO 3N·m.
 LOCTITE 243, HENKEL JAPAN OR EQUIVALENT IS RECOMMEND TO PREVENT
 REF.No. ⑧ FROM LOOSENING.
 ② WHEN MOUNTED ON CHASSIS, BE CAREFUL THAT REFERENCE REF.No. ⑥
 IS FITTED INTO THE INDICATED GROOVE WITHOUT ANY BITING.

NO.	MATERIAL	FINISH .	REMARKS	NO.	MATERIAL	FINISH .	REMARKS
4	PHENOL FORMALDEHYDE	(BLACK)	UL94V-0	8	BRASS		NICKEL PLATING
3	PHENOL FORMALDEHYDE	(BLACK)	UL94V-0	7	PHOSPHOR BRONZE		NICKEL PLATING
2	COPPER ALLOY	SILVER PLATING	2μm min.	6	ACRYLONITRILE BUTADIENE RUBBER		(GRAY)
1	ALUMINUM ALLOY	BLACK CHROME PLATING		5	PHOSPHOR BRONZE		NICKEL PLATING

UNITS	SCALE	COUNT	DESCRIPTION OF REVISIONS	DESIGNED	CHECKED	DATE
mm	2 : 1	△				
APPROVED : HY. KOBAYASHI			18.02.22	DRAWING NO. EDC-021938-31-00		
CHECKED : HY. KOBAYASHI			18.02.22	PART NO. JRC25WRG-24P(31)		
DESIGNED : TH. KAMEYA			18.02.22	CODE NO. CL114-1033-6-31		
DRAWN : TH. KAMEYA			18.02.22	1/1		