

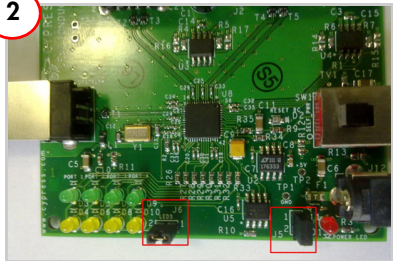
# CY4606 EZ-USB® HX2LP™ REFERENCE DESIGN KIT QUICK START GUIDE

1



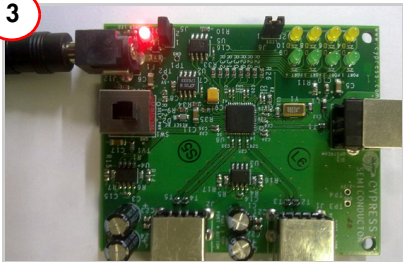
Insert the kit CD/DVD into the CD/DVD drive of your PC. Review kit contents.

2



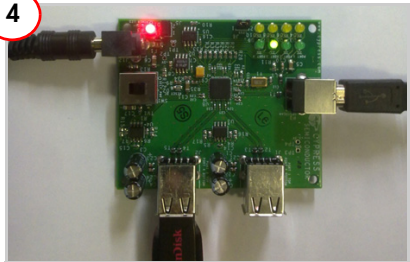
Place jumper on J5 (power status) and J6 (port status) to enable LEDs D1 and D3-D10. Power LED D1 glows only in self-powered mode. The green LEDs (D3, D5, D7, D9) indicate that the downlink port is enabled. The amber LEDs (D4, D6, D8, D10) indicate the port has an exception condition.

3



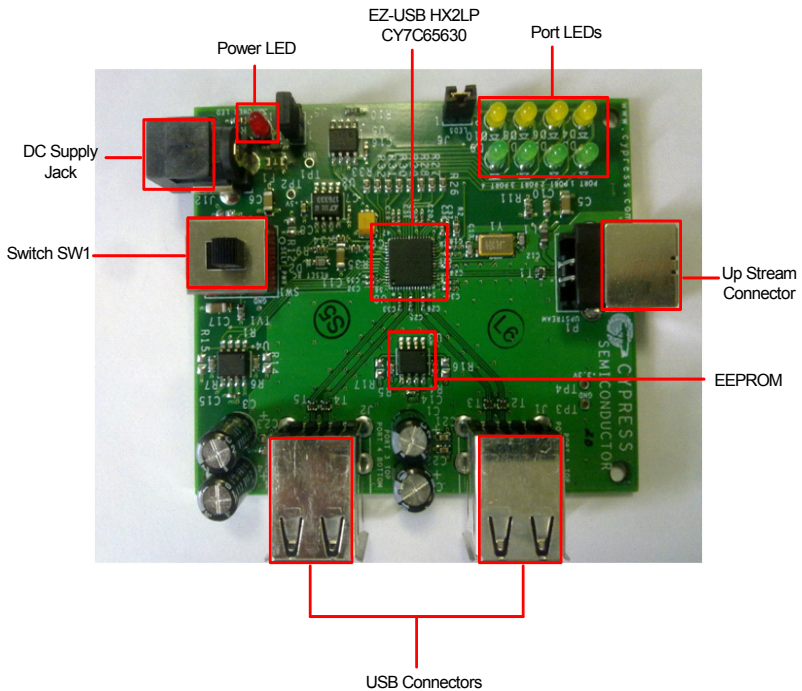
Plug the wall mounted power supply into an AC power receptacle providing power in the range 100 V to 240 V, 50 Hz or 60 Hz. Connect the power supply plug to the hub's 'DC Supply' jack J12.

4



To connect to the PC, plug the USB A to B cable into the hub's 'Up Link' connector P1. Plug the other end of the cable into one of the PC's host controller ports. The hub enumerates as a 'Generic USB Hub'. The hub is now ready for any low speed, full speed, or high speed devices to be plugged into the ports. For the 4-port hub, the board is labeled PORT 1, PORT 2, PORT 3, and PORT 4.

## CY4606 EZ-USB HX2LP Reference Board Details



For the latest information about this kit visit  
<http://www.cypress.com/go/CY4606>

