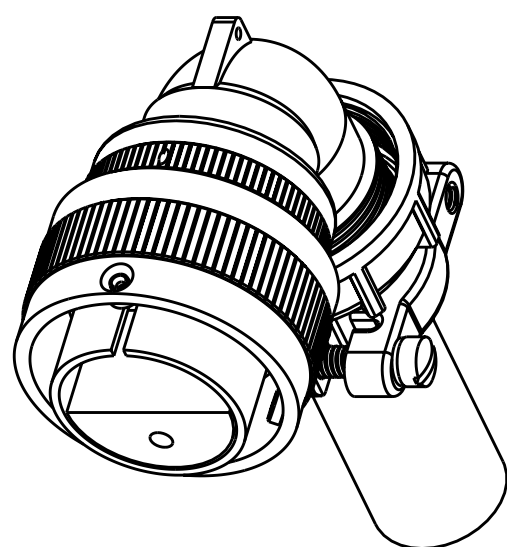


| | | |
|-----------|-----------------------------|------------------|
| REV. B | SHEET 1 OF 3 | 71-604220/239 |
| REVISIONS | | |
| LTR | DESCRIPTION | DATE |
| B | (CL11) REV ELBOW ECN: 93397 | 6-25-04 PRESCOTT |



| CONTACT SIZE | SHELL SIZE | X | Y ±.040 |
|--------------|----------------|---------------------------------|---------|
| 16 SHORT | 10SL, 14S, 16S | .087±.039 | .079 |
| 16 LONG | 16 THRU 40 | .260 ⁺ .052 -.041 | .102 |
| 12 | 16 THRU 40 | .118 ⁺ .039 -.056 | .102 |
| 0, 4, 8 | 16 THRU 40 | .091±.039 | .102 |

| WIRE WELL DATA | | | | | |
|---------------------------------------|-----------|---------------------------------|---------------------------------|---------------------------------|---------------------------------|
| CONTACT SIZE | 0 | 4 | 8 | 12 | 16 |
| WELL DIA | .453±.005 | .281 ⁺ .005 -.004 | .179 ⁺ .004 -.002 | .098 ⁺ .004 -.001 | .063 ⁺ .004 -.001 |
| WELL DEPTH ⁺ .031 -.000 | .592 | .500 | .500 | .250 | .250 |

9. PACKAGE PER PRODUCTION PROCESS SHEET.
8. SEE SEPARATE PARTS LIST FOR COMPONENT PART NUMBERS AND QUANTITIES.
7. FOR MATING CONNECTOR ASSEMBLIES, SEE 71-580960/979 AND OTHERS.
6. SEE WORK ORDER FOR PERMISSIBLE ADDITIONAL OR ALTERNATE STAMPING.
5. PROCESS SPEC:
ASSY 9-9238
TEST 9-3106-18
9-3856-5, 9-3895, 9-2437
4. INSERTS ARE NOT REMOVABLE.
3. DRAWING ILLUSTRATES FINAL ASSEMBLY. FOR STORAGE AND SHIPPING, ELBOW ASSEMBLY MUST BE LOOSELY COUPLED. CONTACTS ARE SHIPPED UNASSEMBLED.
2. FOR CONTACT SIZE, SPACING AND SERVICE RATING, SEE MIL-STD-1651 OR L-11908/40-().
1. UNIT MEETS THE APPLICABLE REQUIREMENTS OF MIL-C-5015.

NOTES:

THE USE OF THIS DOCUMENT IS UNLIMITED. HOWEVER, DOCUMENTS REFERENCED HEREON MAY CONTAIN LIMITED RIGHTS DATA.

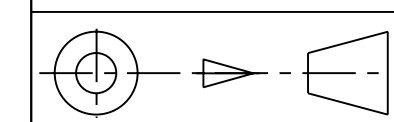
| | |
|---------------|------------------------------------|
| N/A | PRO/ENGINEER INFORMATION |
| N/A | Pro/e Model Used: GTC08AF.ASSEM |
| NEXT ASSEMBLY | Drawing Name: 71-604220.239 |

UNLESS OTHERWISE SPECIFIED
 LINEAR DIMENSIONS ARE IN INCHES
 TOLERANCES:
 .XXXX = ±.0005 ANGLES= ±2°
 .XXX = ±.010
 .XX = ±.03
 .X = ±.1
 DIM. & TOL. PER ASME Y14.5M;
 DRM PER MIL-DTL-31000;
 OTHER Amphenol Sds. PER 9-3800
 LEGENDS:
 =FLAG NOTE CALL OUT REFERENCE ONLY

SPECIFICATIONS
 MATERIAL SPEC.
 N/A
 PROCESS SPEC.
 SEE NOTE 5

| POS | QTY | PART NUMBER | DESCRIPTION | NOTE |
|-----|-----|----------------|--------------------|------|
| 10 | 1 | SEE COLUMN | ELBOW ASSEMBLY | |
| 9 | 1 | SEE COLUMN | SLEEVE | |
| 8 | 1 | SEE COLUMN | CLAMP ASSEMBLY | |
| 7 | | SEE NOTE 8 | CONTACTS | |
| 6 | 1 | 10-748XX-()P/S | INSERT | |
| 5 | 1 | SEE COLUMN | SHELL, PLUG | |
| 4 | 1 | 10-564856-XX3 | COUPLING NUT | |
| 3 | 1 | 10-564843-XX1 | GASKET, MAIN JOINT | |
| 2 | 1 | 10-564860-XX | WASHER, SKID | |
| 1 | 1 | 10-564859-XX | WASHER, WAVED | |

| | |
|--------------------------------|-----------|
| APPROVALS | DATE |
| PREPARED BY A.Prescott | 28-Mar-03 |
| ENGINEER IN CHARGE R.Barnes | |
| DESIGN MANAGER D.Gallusser | |
| DESIGN ACTIVITY GROUP C & I | |
| THIRD ANGLE PROJECTION | |



| | | | |
|--|---------------------------|--------------------------------------|------------------|
| PARTS LIST | | | |
| AMPHENOL CORPORATION 40-60 DELAWARE AVENUE SIDNEY, N.Y. 13858 | | | |
| CONNECTOR, ELECTRICAL PLUG, TYPE GTC08AF(), OLIVE DRAB CADMIUM PLATED | | | |
| SIZE C | CAGE CODE 77820 | DOCUMENT NO. 71-604220/239 | REV. B |
| SCALE: 3.0 | | REF: 71-619220/239 | SHEET 1 OF 3 |

71-604220/239

SHEET 1 OF 3

REV. B

C

B

A

FORMAT: C-U-L-R-V-B

71-604220/239

SHEET 1 OF 3

REV. B

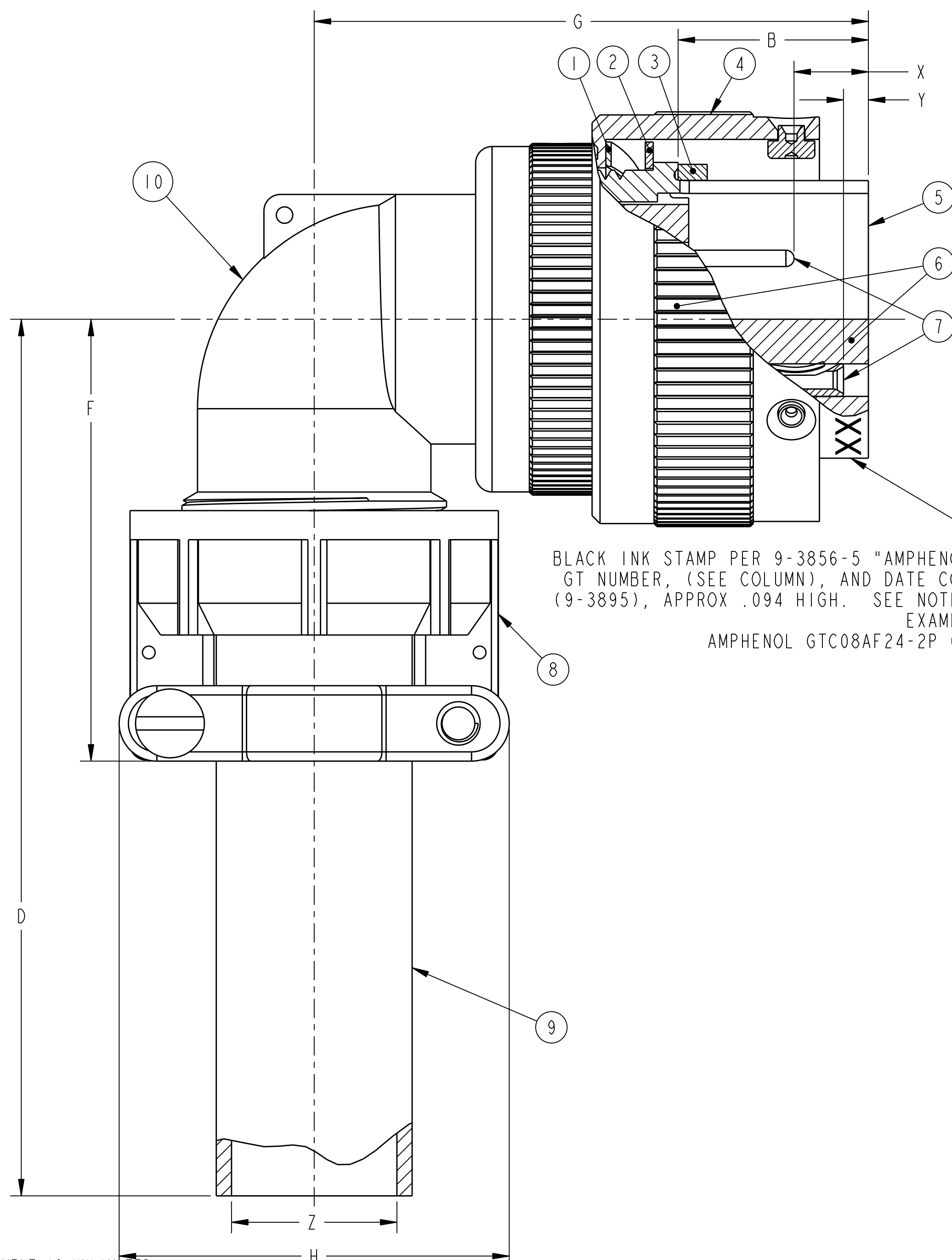
SHEET 1 OF 3

71-604220/239

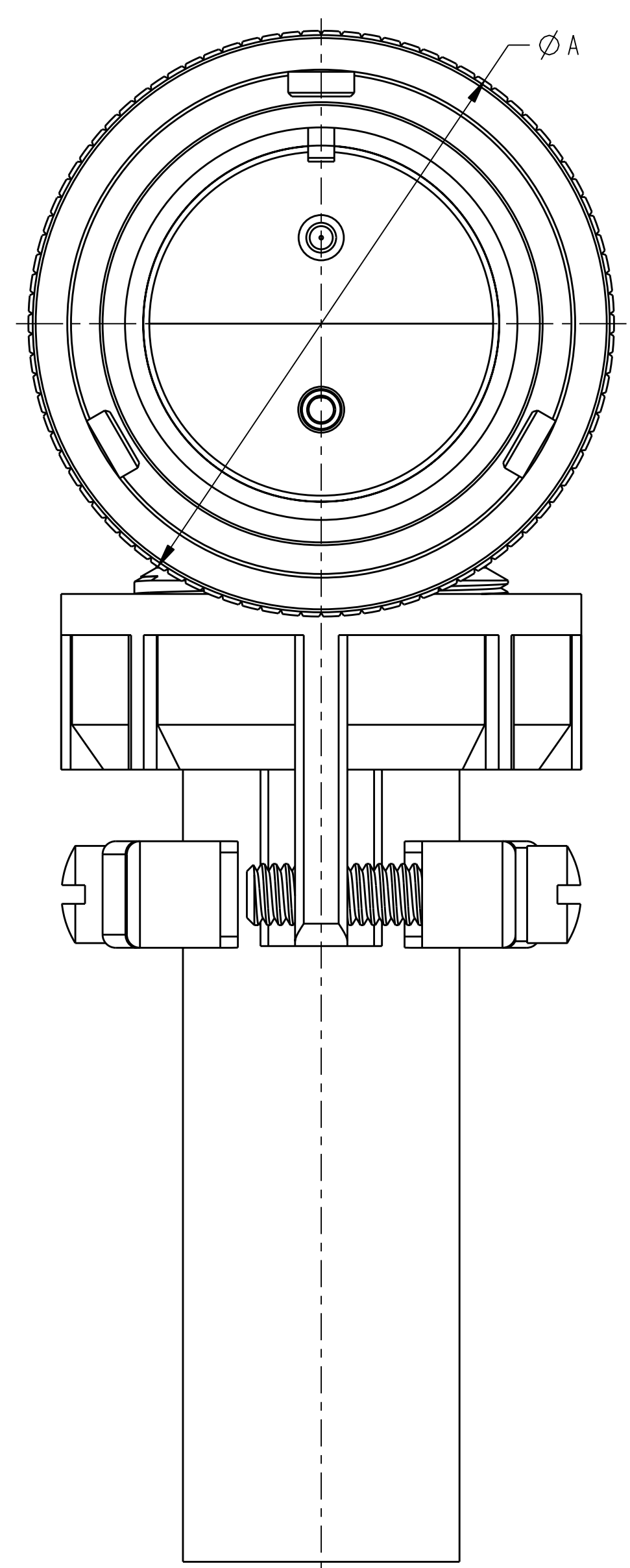
REV. B

A

SHEET 1 OF 3



BLACK INK STAMP PER 9-3856-5 "AMPHENOL",
 GT NUMBER, (SEE COLUMN), AND DATE CODE,
 (9-3895), APPROX .094 HIGH. SEE NOTE 6.
 EXAMPLE:
 AMPHENOL GTC08AF24-2P 0352



71-604220/239 SHEET 2 OF 3 REV. B

SEE SHEET 1.
 NOTES:
 THE USE OF THIS DOCUMENT IS UNLIMITED.
 HOWEVER, DOCUMENTS REFERENCED HEREON
 MAY CONTAIN LIMITED RIGHTS DATA.

| ASSEMBLY NUMBER | SIZE | GT NUMBER | SHELL | ELBOW ASSEMBLY | CABLE CLAMP | SLEEVE | A DIA MAX | B ±.005 | D MAX | F MAX | G MAX | H MAX | Z MAX |
|-----------------|------|----------------|---------------|----------------|--------------|--------------|-----------|---------|-------|-------|-------|-------|-------|
| 71-604220-() | 8S | NOT AVAILABLE | | | | | | | | | | | |
| 71-604221-() | 10S | NOT AVAILABLE | | | | | | | | | | | |
| 71-604222-() | 10SL | GTC08AF10SL-() | 10-580915-113 | 10-610031-113 | 10-824810-4 | 10-824802-4 | .897 | .531 | 3.937 | 1.654 | 1.772 | .894 | .220 |
| 71-604223-() | 12S | NOT AVAILABLE | | | | | | | | | | | |
| 71-604224-() | 12 | NOT AVAILABLE | | | | | | | | | | | |
| 71-604225-() | 14S | GTC08AF14S-() | 10-37266-14 | 10-610031-143 | 10-824810-7 | 10-824802-6 | 1.150 | .531 | 3.937 | 1.654 | 1.850 | 1.083 | .312 |
| 71-604226-() | 14 | NOT AVAILABLE | | | | | | | | | | | |
| 71-604227-() | 16S | GTC08AF16S-() | 10-37266-16 | 10-610031-163 | 10-824810-8 | 10-824802-8 | 1.299 | .531 | 3.937 | 1.772 | 1.890 | 1.181 | .437 |
| 71-604228-() | 16 | GTC08AF16-() | 10-37266-17 | 10-610031-173 | 10-824810-8 | 10-824802-8 | 1.299 | .719 | 3.937 | 1.772 | 2.244 | 1.181 | .437 |
| 71-604229-() | 18 | GTC08AF18-() | 10-37266-18 | 10-610031-183 | 10-824810-10 | 10-824802-10 | 1.437 | .719 | 3.937 | 2.087 | 2.283 | 1.299 | .562 |
| 71-604230-() | 20 | GTC08AF20-() | 10-37266-20 | 10-610031-203 | 10-824810-12 | 10-824802-12 | 1.571 | .719 | 3.937 | 2.087 | 2.402 | 1.476 | .625 |
| 71-604231-() | 22 | GTC08AF22-() | 10-37266-22 | 10-610031-223 | 10-824810-12 | 10-824802-12 | 1.697 | .719 | 3.937 | 2.087 | 2.402 | 1.476 | .625 |
| 71-604232-() | 24 | GTC08AF24-() | 10-37266-24 | 10-610031-243 | 10-824810-16 | 10-824802-16 | 1.835 | .719 | 3.937 | 2.283 | 2.598 | 1.705 | .750 |
| 71-604233-() | 28 | GTC08AF28-() | 10-37266-28 | 10-610031-283 | 10-824810-16 | 10-824802-16 | 2.102 | .719 | 3.937 | 2.283 | 2.598 | 1.705 | .750 |
| 71-604234-() | 32 | GTC08AF32-() | 10-37266-32 | 10-610031-323 | 10-824810-20 | 10-824802-20 | 2.366 | .719 | 4.331 | 2.598 | 2.835 | 2.061 | .937 |
| 71-604235-() | 36 | GTC08AF36-() | 10-37266-36 | 10-610031-363 | 10-824810-24 | 10-824802-24 | 2.610 | .719 | 4.331 | 2.717 | 2.953 | 2.283 | 1.250 |
| 71-604236-() | 40 | GTC08AF40-() | 10-37266-40 | 10-610031-403 | 10-824810-28 | 10-824802-28 | 2.850 | .719 | 5.512 | 3.740 | 3.071 | 2.579 | 1.375 |
| 71-604237/39-() | | NOT AVAILABLE | | | | | | | | | | | |

TO COMPLETE, ADD APPLICABLE INSERT ARRANGEMENT SUFFIX PER 9-2437.

SEE SHEET 1

NOTES:
THE USE OF THIS DOCUMENT IS UNLIMITED. HOWEVER, DOCUMENTS REFERENCED HEREON MAY CONTAIN LIMITED RIGHTS DATA.

| | | | |
|------------|--------------------|----------------------------|--------|
| SIZE C | CAGE CODE 77820 | DOCUMENT NO. 71-604220/239 | REV. B |
| SCALE: 3.0 | REF. 71-619220/239 | SHEET 3 OF 3 | |

71-604220/239

SHEET 3 OF 3

REV. B

C

B

A

D

C

REV. B

SHEET 3 OF 3

71-604220/239

A