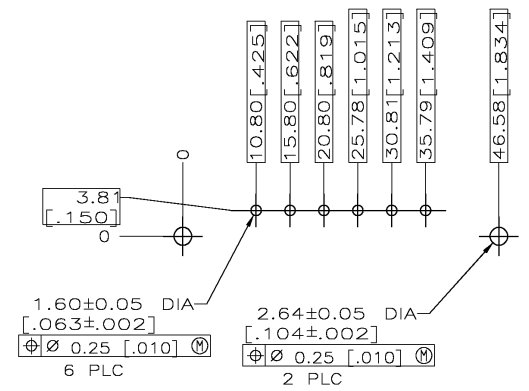
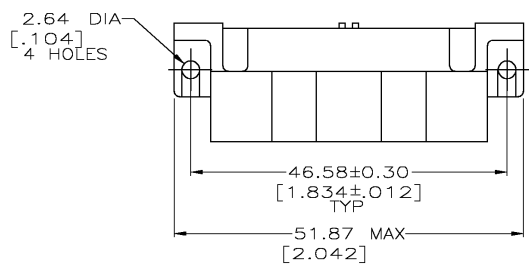
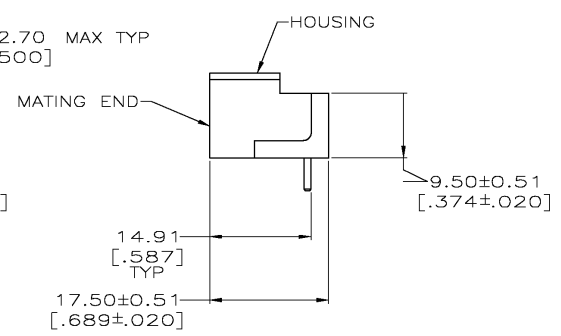
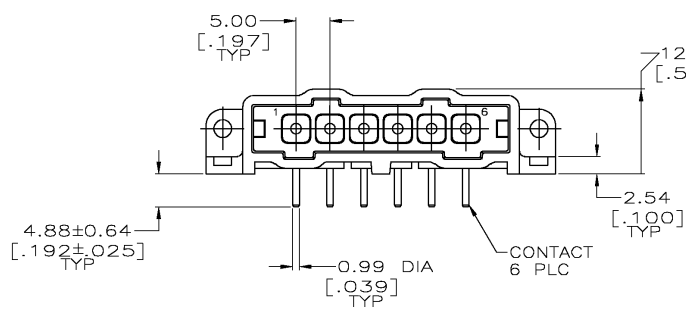


THIS DRAWING IS UNPUBLISHED. RELEASED FOR PUBLICATION
 BY TYCO ELECTRONICS CORPORATION. ALL RIGHTS RESERVED.

LOC	DIST	REVISIONS			
P	LTN	DESCRIPTION	DATE	DWN	APPD
BD	37				
K		063B-0358-03	02MAY03	TK	GS



RECOMMENDED PC BOARD LAYOUT



- ▲ NYLON, RED.
- ▲ BRASS PER ASTM B36.
- ▲ 3.81µm [.000150] MIN TIN-LEAD OVER 2.54µm [.000100] MIN COPPER OR 1.27µm [.000050] MIN NICKEL.
- ▲ 0.76µm [.000030] MIN GOLD FOR A LENGTH OF 5.08 [.200] MIN FROM MATING END, 3.81µm [.000150] MIN TIN-LEAD FOR A LENGTH OF 5.51 [.217] MIN FROM OPPOSITE END, BOTH OVER 1.27µm [.000050] MIN NICKEL.
- ▲ .000150 MIN TIN OVER .000100 MIN CU, OR .000050 MIN TIN.
- ▲ 0.76µm [.000030] MIN GOLD FOR A LENGTH OF 5.08 [.200] MIN FROM MATING END, 3.81µm [.000150] MIN TIN FOR A LENGTH OF 5.51 [.217] MIN FROM OPPOSITE END, BOTH OVER 1.27µm [.000050] MIN NICKEL.

6	207378-7
5	207378-6
4	207378-3
3	207378-1
FINISH	PART NO

THIS DRAWING IS A CONTROLLED DOCUMENT.		DWN L SIPE 07/07/92	Tyco Electronics Corporation Harrisburg, Pa	
DIMENSIONS: INCHES		CHK R STONE 7-24-92	APPROVED A TRAVIS 7-24-92	
TOLERANCES UNLESS OTHERWISE SPECIFIED:		NAME A TRAVIS		
0 PLC ± -		PRODUCT SPEC		
1 PLC ± -		APPLICATION SPEC		
2 PLC ± 0.25 [.010]		SIZE		
3 PLC ± -		CAGE CODE		
4 PLC ± -		DRAWING NO		
ANGLES ± -		RESTRICTED TO		
MATERIAL	FINISH	WEIGHT	A2 00779 ©-207378	
HOUSING: ▲ 1	CONTACTS: SEE TBL	CUSTOMER DRAWING	SCALE 2:1	SHEET 1 OF 1 REV K