

THIS DRAWING IS UNPUBLISHED.		RELEASED FOR PUBLICATION		2007	
COPYRIGHT 2007		ALL RIGHTS RESERVED.			
PART NUMBER	REV	FIRST USED	POWER UNIT	FEED TYPE	
1852633-1	F	122500-1	LEADMAKER & BENCH G	AIR FEED	
1852633-2	F	565435-5	BENCH MODEL K	AIR FEED	
7-1852633-7	A	-	-	-	

- 1 RECOMMENDED SPARE PARTS.
- 2 GREASE LIGHTLY.
- 3 LUBRICATE DAILY USING NO.20 MACHINE OIL.
- 4 AFTER ASSEMBLY OF APPLICATOR, PROPER SPRING PRESSURE (ITEM 34) CAN BE OBTAINED BY TIGHTENING SET SCREW (ITEM 105) UNTIL CONTACT IS MADE WITH SPACER (ITEM 32) THEN TIGHTEN AN ADDITIONAL 5 1/2-6 REVOLUTIONS.
- 5 TO BE SHIPPED WITH ASSEMBLY.
- 6 APPLY LOCTITE TO ITEM 93 AT ASSEMBLY.

TERMINAL NAME: RECEPTACLE, FLAG, FASTIN-FASTON, .250 SERIES					
-	1742543	TE TERMINAL - TE CRIMP SPECS			
-	-	PAD LTR	CRIMP HEIGHT	WIRE SIZE	-
-	-	A	.058±.002	(1)14 or (1)16+(1)18	-
-	-	B	.053±.002	(2)18	-
-	-	C	.050±.002	16	-
-	-	D	.046±.002	18	-
-	-	CRIMP	SIZE	TYPE	RANGE
-	-	WIRE	.160	TAB LOC	18-12
-	-	INSUL	.180	O	.110-.210
WIRE STRIP LENGTH	TERM APPL SPEC	FEED	APPL INSTRUCTIONS	SET UP GAGE	LAYOUT
.205-.235	114-2078	.820	408-8037	-	-

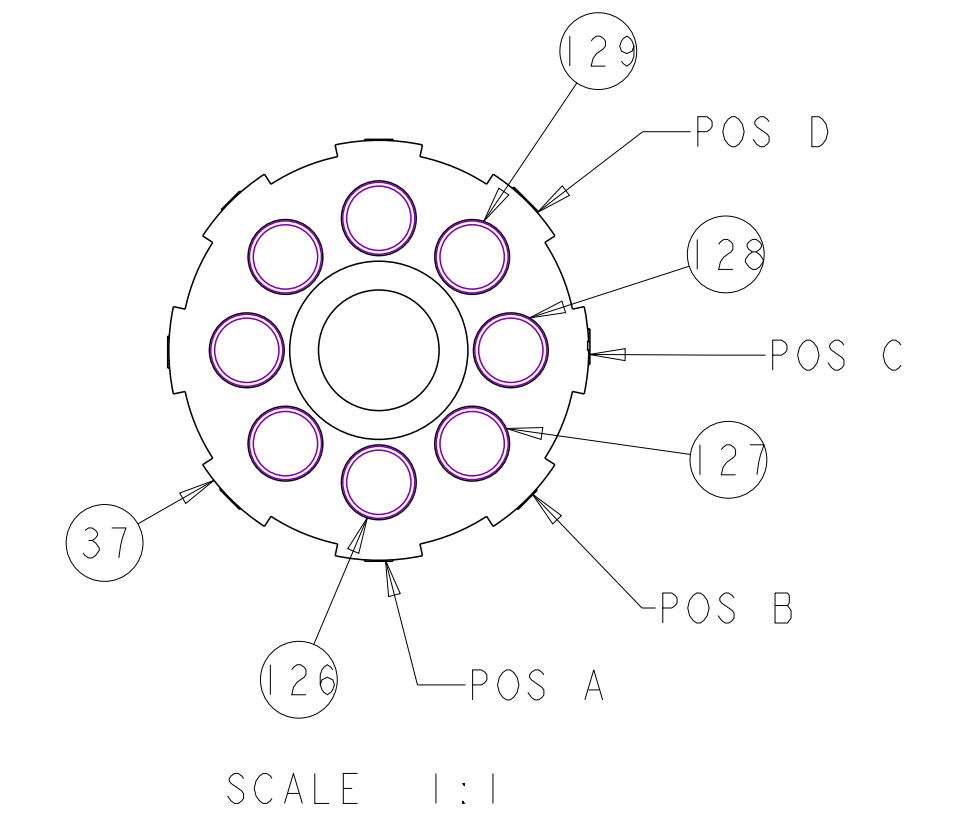
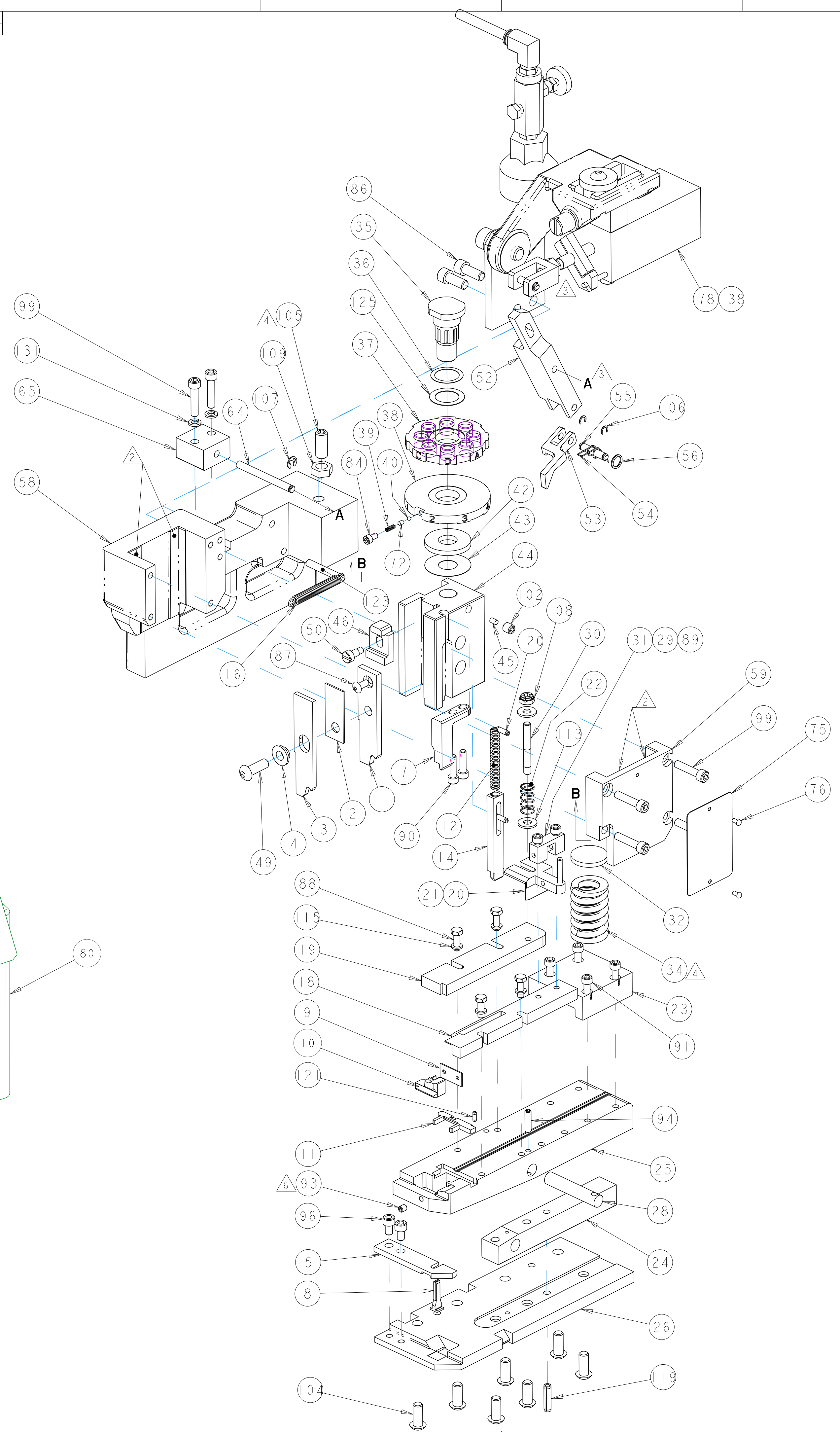
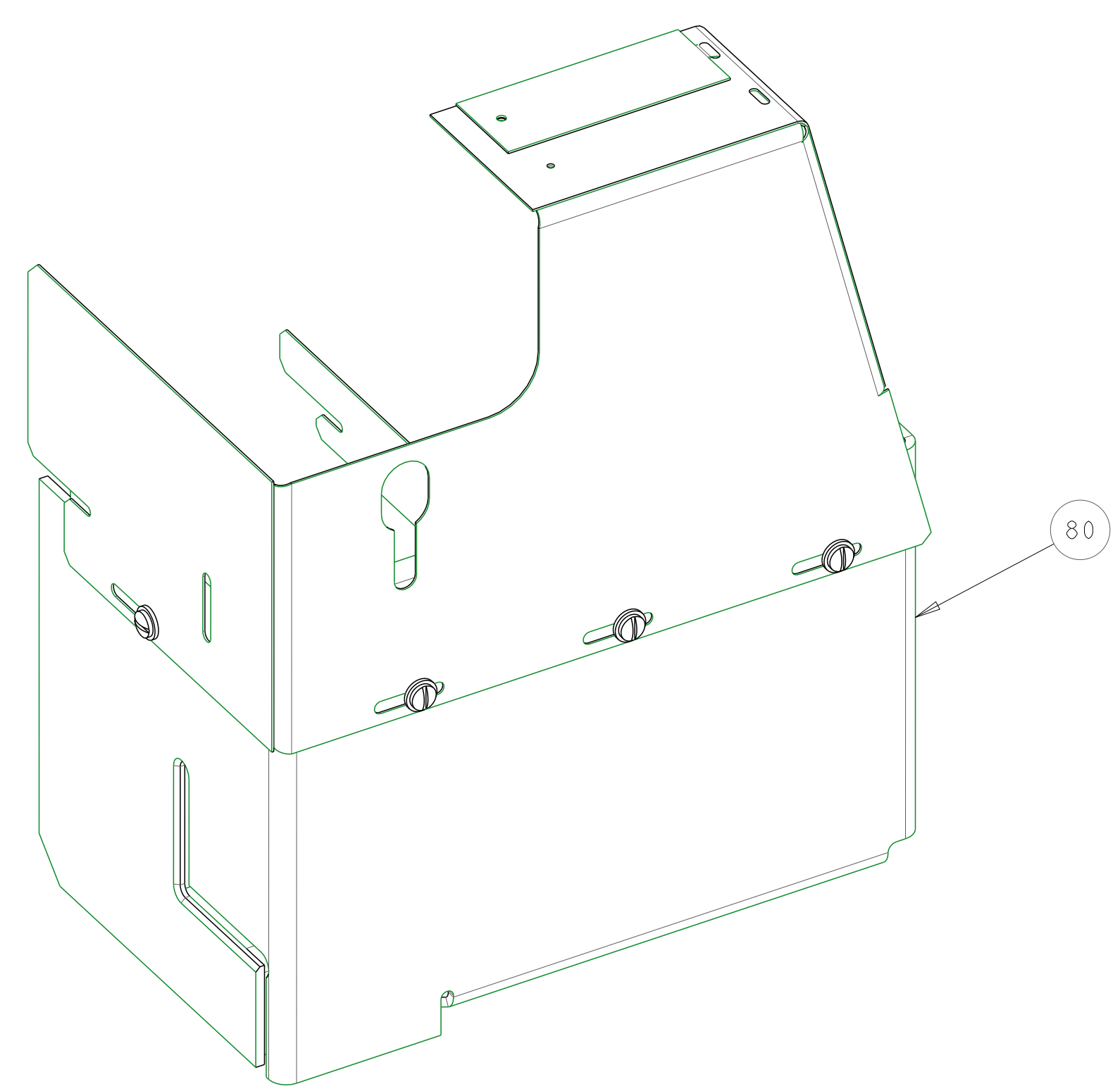
LOC	DIST	REVISIONS			
A	66	REV	DATE	BY	APPD
		F1	16SEP2011	RK	GB

-	-	1	..	462622-2	AIR FEED ASSEMBLY	138
-	2	2	-	21024-5	WASHER, SPRG LOCK, REG NO 10	131
-	2	2	-	5-354779-8	PIN, WIRE DISC, .3280	129
-	2	2	-	5-354779-2	PIN, WIRE DISC, .3250	128
-	2	2	-	4-354779-6	PIN, WIRE DISC, .3220	127
-	2	2	-	3-354779-6	PIN, WIRE DISC, .3170	126
-	1	1	-	986950-1	WASHER, FLAT PRECISION	125
-	1	1	-	3-22183-9	PIN, GROOVED, TYPE 67	123
-	1	1	-	3-21028-2	PIN, SLOTTED SPRING .094 X .250	121
-	2	2	-	4-21028-9	PIN, SLOTTED SPRING .125 X .375	120
-	1	1	-	21029-5	PIN, SLOTTED SPRING .188 X .750	119
-	4	4	-	21024-4	WASHER, SPRG LOCK, REG NO 8	115
-	2	2	-	21899-2	WASHER, FLAT	113
-	1	1	-	1-22202-7	NUT, HEX, JAM 5/16-24/UNF	109
-	1	1	-	21022-3	NUT, HEX, SELF-LOCKING, THIN, 10-32	108
-	1	1	-	1-21986-2	RING, RETAIN, EXTERN, 3/16 E-RING	107
-	2	2	-	21045-3	RING, RETAIN, EXTERN, 3/16 CRESCENT	106
-	1	1	-	8-21007-5	SCR, SET, CUP POINT 5/16-24 X .750	105
-	7	7	-	2-22733-8	SCR, BHSC, SELF-LOCKING, 1/4-20 X .625	104
-	1	1	-	21009-2	SCR, SET, SELF LOCKING 1/4-20 X .250	102
-	6	6	-	3-21000-8	SCR, SKT HD CAP 10-32 X .875	99
-	2	2	-	7-21000-6	SCR, SKT HD CAP 10-32 X .312	96
-	1	1	-	4-21006-5	SCR, SET, CUP POINT 8-32 X .625	94
6	1	1	-	21061-9	SCR, SET, CONE POINT 8-32 X .250	93
-	4	4	-	2-21000-9	SCR, SKT HD CAP 8-32 X .750	91
-	2	2	-	1-23030-1	SCR, SKT HD CAP, S-LOCK, 8-32 X .625	90
-	2	2	-	2-21000-8	SCR, SKT HD CAP 8-32 X .625	89
-	4	4	-	2-22603-3	SCR, HEX HD CAP, IN	88
-	1	1	-	2-21002-1	SCR, BTN SKT HD CAP 8-32 X .375	87
-	2	2	-	21001-3	SCR, SKT HD CAP 1/4-20 X .625	86

-	1	1	-	23030-1	SCR, SKT HD CAP, S-LOCK, 6-32 X .25	84
-	1	-	-	457244-2	GUARD ASSEMBLY	80
-	2	2	-	3-21000-4	SCR, SHC (10-32X.25)	79
-	1	-	-	457098-7	AIR FEED ASSEMBLY	78
-	1	-	-	694427-1	PLATE, APPLICATOR, MOUNTING	77
-	2	2	-	21017-2	SCREW, DRIVE	76
-	1	1	-	461264-1	PLATE, IDENTIFICATION	75
-	1	1	-	690603-1	SPRING ASSIST AMP-O-MATOR APPLICATOR	72
-	1	1	-	456987-1	BLOCK, PIVOT	65
-	1	1	-	457058-1	PIN, PIVOT	64
-	1	1	-	455164-1	CAP, RAM	59
-	1	1	-	457079-1	HOUSING, MACHINING	58
-	1	1	-	25745-1	RING, SPLIT	56
-	1	1	-	240624-1	PIN, FEED FINGER	55
-	1	1	-	691499-1	SPRING-FEED FINGER	54
-	1	1	-	454568-1	FINGER, FEED	53
-	1	1	-	457057-2	PIVOT ARM	52
-	1	1	-	22353-8	SCR, SHLD, SLOT HD, 3/16 DIA	50
-	1	1	-	3-21002-5	SCR, BTN SKT HD CAP 1/4-20 X .750	49
-	1	1	-	690578-1	INSULATION ADJUST BLOCK	46
-	1	1	-	690191-1	PLUG, NYLON	45
-	1	1	-	454574-1	RAM	44
-	1	1	-	690125-1	SHIM SUB-ASSY	43
-	1	1	-	690124-4	WASHER, RAM (.135)	42
-	1	1	-	23241-6	BALL, STEEL	40
-	1	1	-	690170-1	SPRING, COMPRESSION	39
-	1	1	-	690142-1	DISC, INSULATION	38
-	1	1	-	354777-1	WIRE DISC, ASSEMBLY	37
-	1	1	-	22480-5	WASHER, WAVE SPRING	36
-	1	1	-	690212-1	POST, RAM	35
-	1	1	-	3-23846-5	SPRING, DIE	34
-	1	1	-	690573-1	SPACER, SPRING	32
-	1	1	-	454569-1	MOUNT, DRAG	31
-	1	1	-	1-22354-8	STUD, THREADED	30
-	1	1	-	21030-2	PIN, DOWEL .1250 X .500	29
-	1	1	-	1633530-1	PIN, HINGE	28
-	1	1	-	684905-1	PLATE, BASE	26
-	1	1	-	454579-4	BAR, HINGE	25
-	1	1	-	690571-1	STABILIZER	24
-	1	1	-	690585-1	BLOCK, SPRING PRESSURE	23
-	1	1	-	22282-5	SPRING, COMPRESSION	22
-	1	1	-	21030-6	PIN, DOWEL .1250 X 1.000	21
-	1	1	-	454570-2	DRAG, STOCK	20
-	1	1	-	454573-2	GUIDE, STRIP, REAR	19
-	1	1	-	454571-6	GUIDE, FRONT STRIP	18
-	1	1	-	2-22287-6	SPRING, EXTENSION	16
-	1	1	-	692134-1	TERMINAL POSITIONER	14
-	1	1	-	5-22280-5	SPRING, COMPRESSION	12
1	1	1	-	454711-5	PLATE, REAR SHEAR	11
1	1	1	-	1633080-2	ANVIL, INSERT	10
1	1	1	-	690569-1	PLATE, SHEAR, FRONT	9
1	1	1	-	690575-1	ANVIL, REVERSIBLE	8
1	1	1	-	854422-3	BLADE, SHEAR	7
1	1	1	-	684906-1	ANVIL RETAINING	5
-	1	1	-	690574-1	SPACER, TUBULAR	4
1	1	1	-	690588-1	CRIMPER, INSULATION PREMIUM	3
-	1	1	-	681153-1	SPACER, CRIMPER	2
1	1	1	-	690587-1	CRIMPER, WIRE	1

THIS DRAWING IS A CONTROLLED DOCUMENT.		OWN	R.O.WILSON	06FEB2008
DIMENSIONS:		CHK	R.O.WILSON	07FEB2008
IN		APVD	J. ELRLIN	07FEB2008
TOLERANCES UNLESS OTHERWISE SPECIFIED:		NAME		
0 PLC ±		END FEED HINGE BAR APPLICATOR		
1 PLC ±		PRODUCT SPEC		
2 PLC ±		APPLICATION SPEC		
3 PLC ±		SIZE		
4 PLC ±		CAGE CODE		
ANGLES ±		DRAWING NO		
FINISH ±		RESTRICTED TO		
MATERIAL		WEIGHT		
		A100779C=1852633		
CUSTOMER ACCESSIBLE PRODUCTION DRAWING		SCALE 1:1 SHEET 1 OF 2 REV F1		

LOC		DIST		REVISIONS					
A		66		P	LTN	DESCRIPTION	DATE	DWN	APVD
				-	-	SEE SHEET 1	-	-	-



THIS DRAWING IS A CONTROLLED DOCUMENT.		DWN R.O.WILSON 06FEB2008	TE Connectivity	
		CHK R.O.WILSON 07FEB2008		
DIMENSIONS: IN		TOLERANCES UNLESS OTHERWISE SPECIFIED:	NAME END FEED HINGE BAR APPLICATOR	
		0 PLC ±	PRODUCT SPEC	
		1 PLC ±	APPLICATION SPEC	
		2 PLC ±	SIZE CAGE CODE DRAWING NO	
		3 PLC ±	RESTRICTED TO	
		4 PLC ±	A100779C=1852633	
		ANGLES ±	CUSTOMER ACCESSIBLE PRODUCTION DRAWING	
MATERIAL		FINISH	WEIGHT	SCALE 3:5 SHEET 2 OF 2 REV F1