

THIS DRAWING IS UNPUBLISHED.

RELEASED FOR PUBLICATION

2006

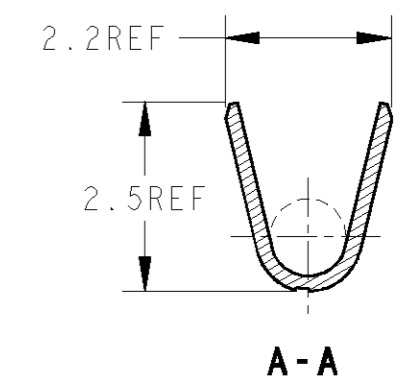
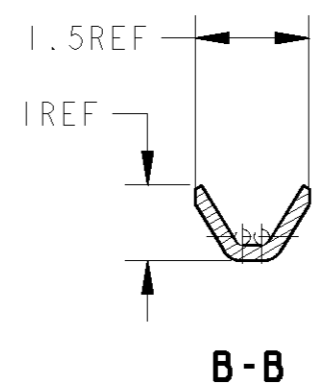
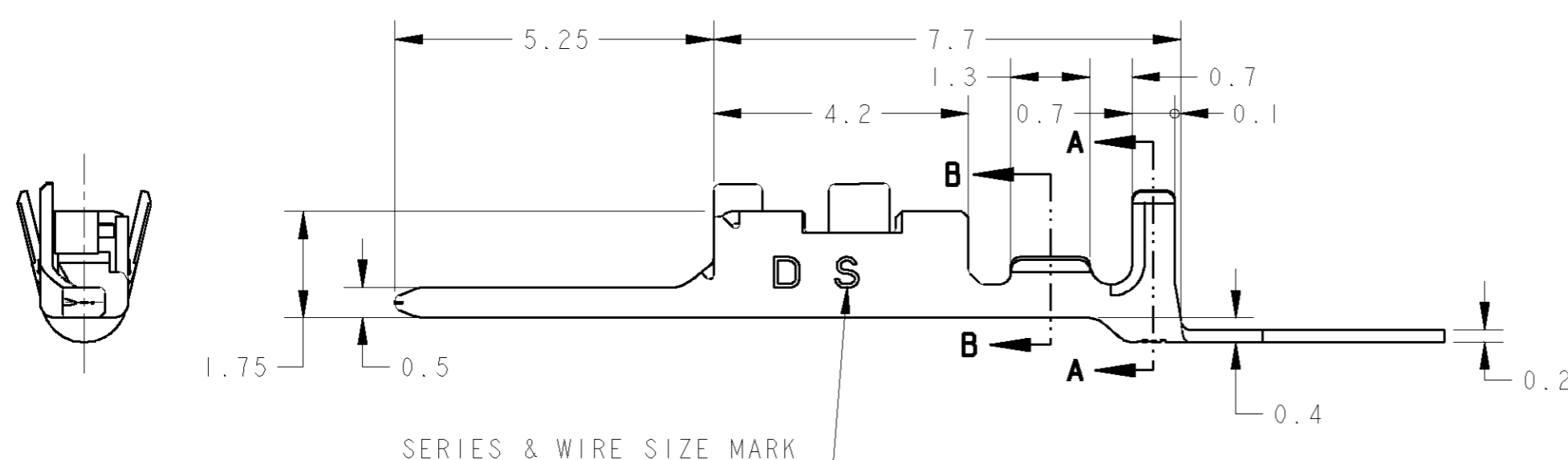
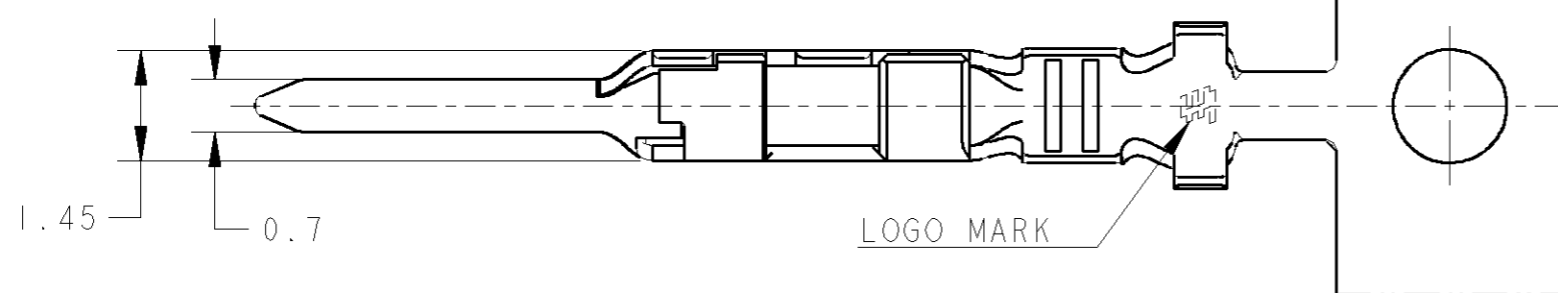
LOC J

DIST

REVISIONS

© COPYRIGHT 2006 BY TYCO ELECTRONICS CORPORATION. ALL INTERNATIONAL RIGHTS RESERVED.

P	LTR	DESCRIPTION	DATE	DWN	APVD
	B	REVISED PER ECR-10-010439	10JUN2010	HMR	T.M



AS SHOWN: 1903111-2

△ COPPER ALLOY: FINISH; CONTACT AREA Au 0.38μmMIN, OVER Ni 1.27μmMIN △ 銅合金: 下地; 全面ニッケルめっき1.27μm以上, 接点部; 金めっき0.38μm以上	1903111-2
MATERIAL (材料)	PART NO (型番)

1. THE SHAPE, SIZE AND POSITION OF THE CHARACTER SHOW THE OUTLINE. THEY DON'T SHOW DETAILS.

1. 文字の形状、大きさ、および位置については、大略を示すものであり、詳細を示すものではありません。

THIS DRAWING IS A CONTROLLED DOCUMENT FOR TYCO ELECTRONICS CORPORATION IT IS SUBJECT TO CHANGE AND THE CONTROLLING ENGINEERING ORGANIZATION SHOULD BE CONTACTED FOR THE LATEST REVISION.	
DIMENSIONS: 単位: ㎜ mm	TOLERANCES UNLESS OTHERWISE SPECIFIED: 一般公差 ±0.3, ±3° 0-PLC ± 1-PLC ± 2-PLC ± 3-PLC ± 4-PLC ± ANGLES ±
MATERIAL 材料	FINISH 仕上

DWN	M. MAEBASHI	11APR2006
CHK	T. KUDO	11APR2006
APVD	D. MITSUGI	11APR2006
PRODUCT SPEC	108-78268	
APPLICATION SPEC	114-5377	
WEIGHT	0.123 g	
CUSTOMER DRAWING		

WIRE RANGE 包合電線断面積 mm ²	AWG#30~#28 0.05~0.09	INSULATION DIA 被覆外径 mm	φ0.6~φ1.2
		Tyco Electronics Corporation Kawasaki, Japan	
NAME 名称 DYNAMIC D1000 SERIES TAB CONTACT Au S-TYPE REEL			
SIZE	A3	CAGE CODE	00779
DRAWING NO	C=1903111		
RESTRICTED TO			
SCALE	10:1	SHEET	1 OF 1
REV	B		