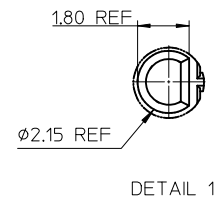
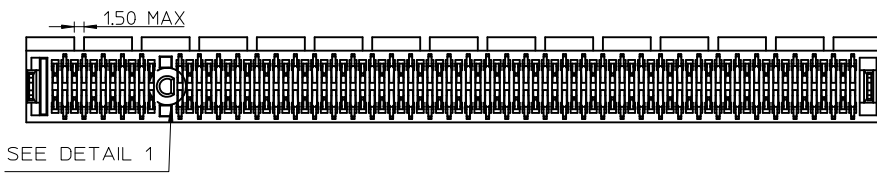
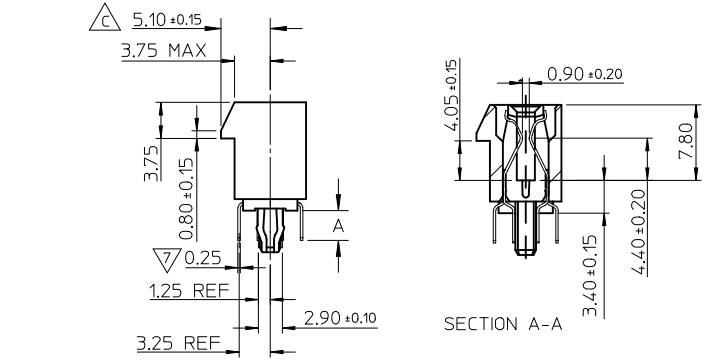
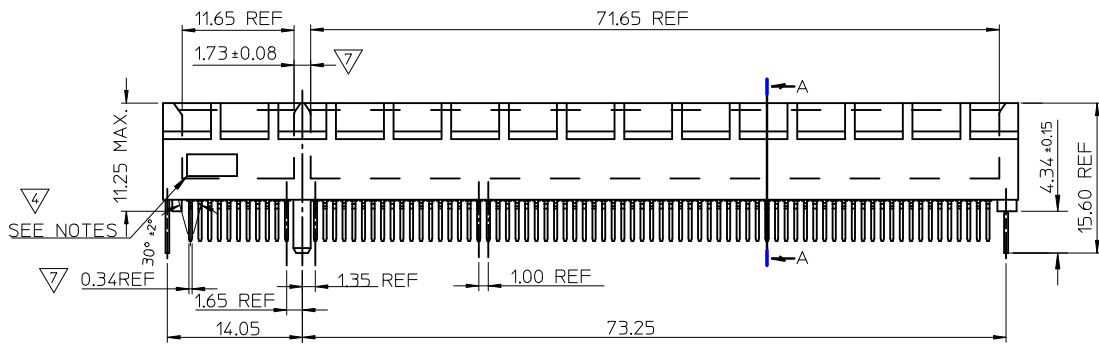
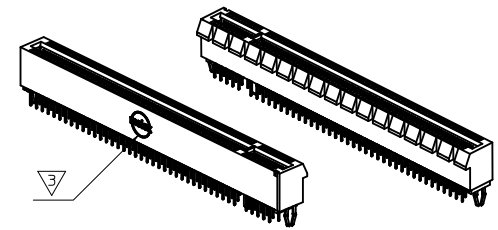
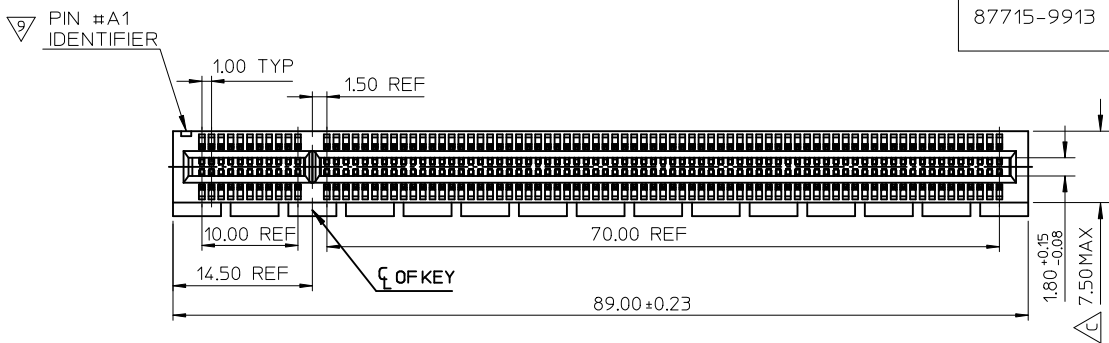
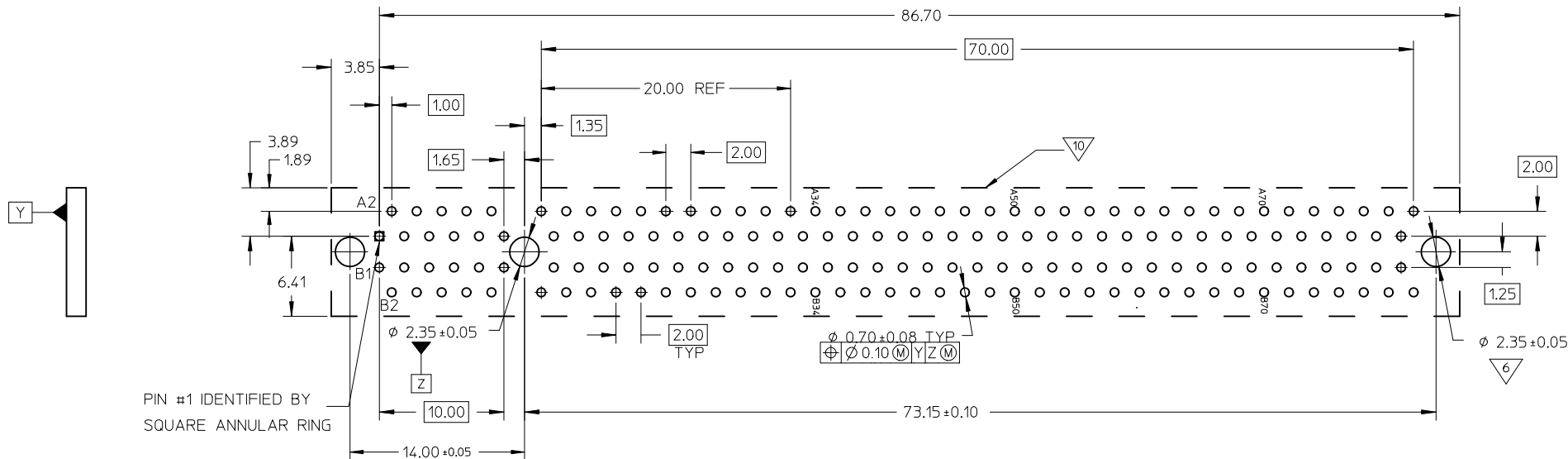


PART NUMBER	DIM A	CONTACT AREA PLATING OPTION	SOLDERTAIL PLATING OPTION	PROT SIZE	TOTAL CKTS SIZE
87715-9912	2.54	30 MICROINCH MIN. GOLD	100 MICROINCH MIN. TIN OVER NICKEL PLATED OVERALL	16	164
87715-9913	3.00	30 MICROINCH MIN. GOLD	100 MICROINCH MIN. TIN OVER NICKEL PLATED OVERALL	16	164



CORRECT ERROR TO INCLUDE DIM A IN DRAWING EC NO: SH2012-0364 DRWNR: L109 2012/04/24 CHKD: APPR: RZHANG 2012/04/27	DESCRIPTION REV	QUALITY SYMBOLS	GENERAL TOLERANCES (UNLESS SPECIFIED)	DIMENSION STYLE	SCALE	DESIGN UNITS	THIRD ANGLE PROJECTION																	
		$\nabla = 0$ $\nabla = 0$	<table border="1"> <thead> <tr> <th></th> <th>mm</th> <th>INCH</th> </tr> </thead> <tbody> <tr> <td>4 PLACES</td> <td>± ---</td> <td>± ---</td> </tr> <tr> <td>3 PLACES</td> <td>± ---</td> <td>± ---</td> </tr> <tr> <td>2 PLACES</td> <td>± 0.25</td> <td>± ---</td> </tr> <tr> <td>1 PLACE</td> <td>± 0.25</td> <td>± ---</td> </tr> <tr> <td>0 PLACE</td> <td>±</td> <td>±</td> </tr> </tbody> </table>		mm	INCH	4 PLACES	± ---	± ---	3 PLACES	± ---	± ---	2 PLACES	± 0.25	± ---	1 PLACE	± 0.25	± ---	0 PLACE	±	±	MM ONLY	METRIC	∇
			mm	INCH																				
		4 PLACES	± ---	± ---																				
3 PLACES	± ---	± ---																						
2 PLACES	± 0.25	± ---																						
1 PLACE	± 0.25	± ---																						
0 PLACE	±	±																						
ANGULAR ± 3 ° DRAFT WHERE APPLICABLE MUST REMAIN WITHIN DIMENSIONS	DRAWN BY: KEN LEE CHECKED BY: ALLEN LIN APPROVED BY: WILSON CHANG DATE: 2006/03/22 DATE: 2006/03/22 DATE: 2006/03/22	TITLE	PCI EXPRESS X16 (164CKT) VERT DIP WITH BOARD LOCK (LEAD FREE VERSION)																					
SEE TABLE	MATERIAL NO.	DOCUMENT NO.	SHEET NO.																					



NOTES:

1. MATERIALS: HOUSING - HIGH TEMPERATURE THERMOPLASTIC, UL 94-V0 (BLACK)
TERMINAL - COPPER ALLOY
2. PLATING: CONTACT AREA - SEE TABLE IN SHEET 2 FOR PLATING OPTION
SOLDER TAILS - SEE TABLE IN SHEET 2 FOR PLATING OPTION
UNDERPLATING - 50μ" (1.27μm) MIN. NICKEL

RECOMMENDED P.C.B. PATTERN
(CONNECTOR SIDE)

THICKNESS: 1.57mm FOR 2.54mm SOLDER TAIL LENGTH
2.35mm FOR 3.00mm SOLDER TAIL LENGTH

11. PRODUCT SPECIFICATION REFER TO PS-87715-200.
12. PACKAGE SPECIFICATION REFER TO PK-87715-205.
13. TEST SUMMARY REFER TO TS-87715-211.
14. LEAD FREE AND RoHS COMPLIANT PRODUCT.

3. MOLEX LOGO - TO BE LASER-MARKED
4. DATE CODE - TO BE LASER-MARKED
5. CHAMFER EDGES OF EDGE CARD MUST BE FREE OF CUTTING BURRS
6. THE HORIZONTAL AXIS FOR THE FOOTPRINT HOLE PATTERN IS ESTABLISHED BY A LINE THROUGH THE CENTRE OF THE TWO Ø2.35 HOLES. THE VERTICAL AXIS IS 90° TO THE HORIZONTAL AXIS, THROUGH THE CENTRE OF DATUM Z
7. FEATURES DESIGNED TO FUNCTIONALLY MATE/MOUNT (SLIP FIT) PER THE RECOMMENDED EDGE CARD AND PCB PATTERN.
8. PINS FOR HOT PLUG PRESENCE DETECTION, NO TIE BAR PERMITTED FROM CARD EDGE TO LEADING EDGE OF PAD FOR THE HOT PLUG PINS.
9. PIN #1 IDENTIFIER
10. KEEP OUT AREA - NO EXTERNAL COMPONENTS ALLOWED ON PCB SURFACE

SEE SHEET 1 EC NO: SH2012-0364 DRW: RLL109 2012/04/24 CHKD: APPR: RZHANG 2012/04/27	QUALITY SYMBOLS	GENERAL TOLERANCES (UNLESS SPECIFIED)		DIMENSION STYLE MM ONLY		SCALE	DESIGN UNITS METRIC	THIRD ANGLE PROJECTION
	▽=0	mm	INCH	DRAWN BY	DATE	TITLE		
	▽=0	4 PLACES ± --- ± ---	3 PLACES ± --- ± ---	KEN LEE	2006/03/22	PCI EXPRESS X16 (164CKT) VERT DIP WITH BOARD LOCK (LEAD FREE VERSION)		
		2 PLACES ± 0.25 ± ---	1 PLACE ± 0.25 ± ---	CHECKED BY	DATE	molex DOCUMENT NO. SD-87715-211 SHEET NO. 2 OF 3		
	0 PLACES ± ±	ANGULAR ± 3°	ALLEN LIN	2006/03/22				
	DRAFT WHERE APPLICABLE MUST REMAIN WITHIN DIMENSIONS		APPROVED BY		DATE	MATERIAL NO.		
			WILSON CHANG		2006/03/22	SEE TABLE		
			MATERIAL NO.		THIS DRAWING CONTAINS INFORMATION THAT IS PROPRIETARY TO MOLEX INCORPORATED AND SHOULD NOT BE USED WITHOUT WRITTEN PERMISSION			

10 9 8 7 6 5 4 3 2 1

F

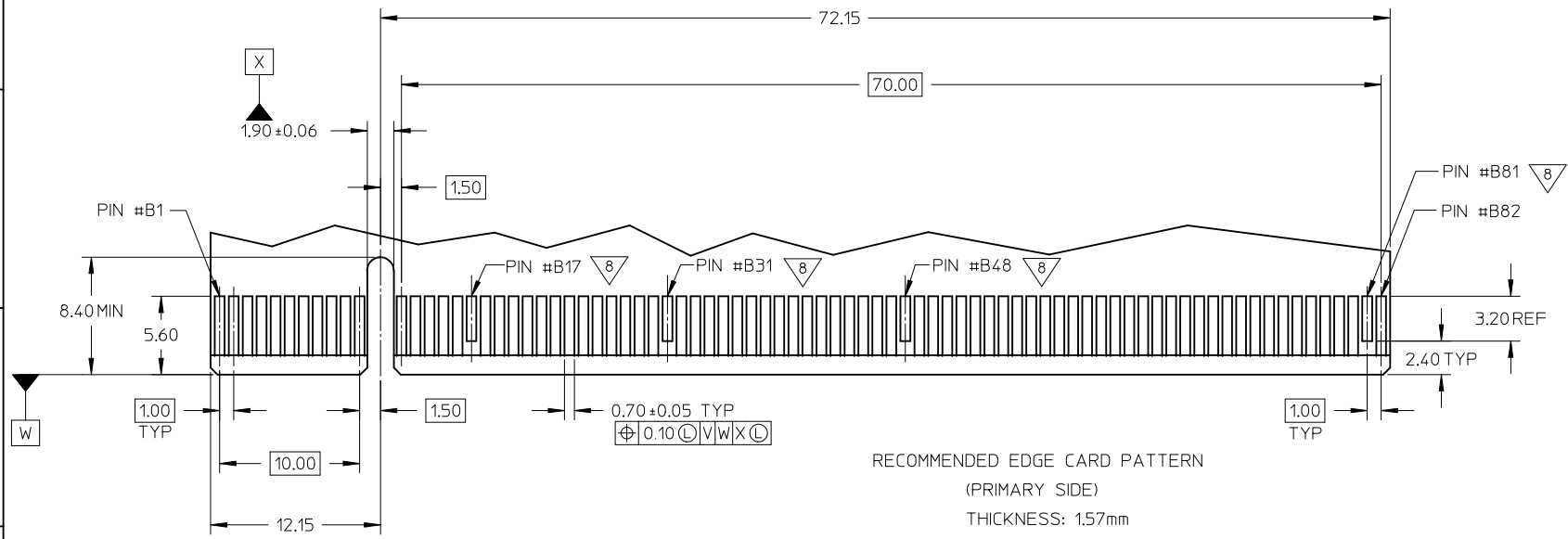
E

D

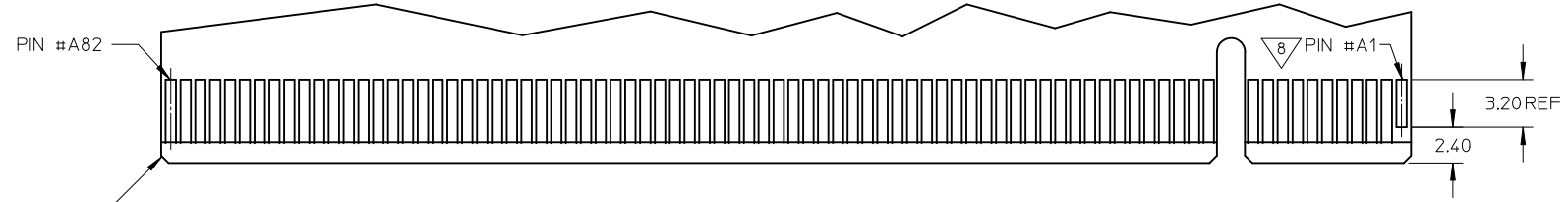
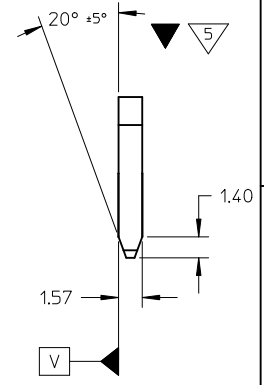
C

B

A



RECOMMENDED EDGE CARD PATTERN
(PRIMARY SIDE)
THICKNESS: 1.57mm



RECOMMENDED EDGE CARD PATTERN
(SECONDARY SIDE)
THICKNESS: 1.57mm

SEE SHEET 1
EC NO: SH2012-0364
DRAWN: L109 2012/04/24
CHKD:
APPR: RZHANG 2012/04/27

REV	DESCRIPTION
1	QUALITY SYMBOLS
2	▽=0
3	▽=0

GENERAL TOLERANCES (UNLESS SPECIFIED)	
	mm INCH
4 PLACES	± --- ± ---
3 PLACES	± --- ± ---
2 PLACES	± 0.25 ± ---
1 PLACE	± 0.25 ± ---
0 PLACE	± ±
ANGULAR ± 3°	
DRAFT WHERE APPLICABLE MUST REMAIN WITHIN DIMENSIONS	

DIMENSION STYLE	
MM ONLY	
DRAWN BY	DATE
KEN LEE	2006/03/22
CHECKED BY	DATE
ALLEN LIN	2006/03/22
APPROVED BY	DATE
WILSON CHANG	2006/03/22
MATERIAL NO.	
SEE TABLE	

SCALE	DESIGN UNITS	THIRD ANGLE PROJECTION
	METRIC	☉
TITLE		
PCI EXPRESS X16 (164CKT) VERT DIP WITH BOARD LOCK (LEAD FREE VERSION)		
molex		
DOCUMENT NO.		SHEET NO.
SD-87715-211		3 OF 3
THIS DRAWING CONTAINS INFORMATION THAT IS PROPRIETARY TO MOLEX INCORPORATED AND SHOULD NOT BE USED WITHOUT WRITTEN PERMISSION		

9 8 7 6 5 4 3 2 1