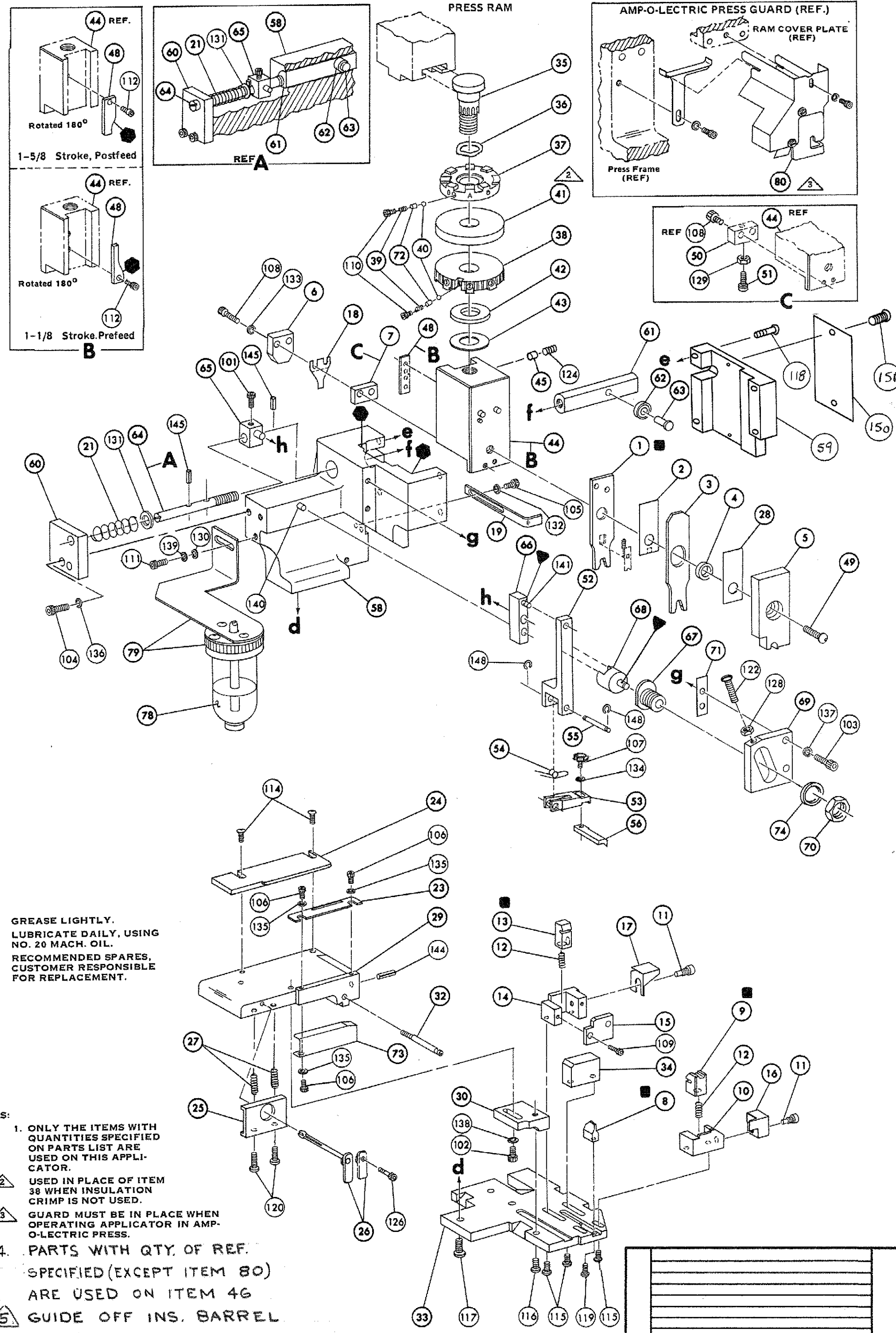


THIS IS A CONTROLLED DOCUMENT.

687966-1



KEY:
 ● GREASE LIGHTLY.
 ▼ LUBRICATE DAILY, USING NO. 20 MACH. OIL.
 ■ RECOMMENDED SPARES, CUSTOMER RESPONSIBLE FOR REPLACEMENT.

NOTES:
 1. ONLY THE ITEMS WITH QUANTITIES SPECIFIED ON PARTS LIST ARE USED ON THIS APPLICATOR.
 2. USED IN PLACE OF ITEM 38 WHEN INSULATION CRIMP IS NOT USED.
 3. GUARD MUST BE IN PLACE WHEN OPERATING APPLICATOR IN AMP-O-LECTRIC PRESS.
 4. PARTS WITH QTY. OF REF. SPECIFIED (EXCEPT ITEM 80) ARE USED ON ITEM 46.
 5. GUIDE OFF INS. BARREL

REQ.	PART NO.	DESCRIPTION	NO.	REQ.	PART NO.	DESCRIPTION	NO.
				162	REF 690517-1	SPACER	71
				161	REF 22594-8	NUT, HEX	70
				160	REF 240628-1	PLATE, ADJUSTMENT	69
				159	REF 240626-1	SHAFT, PIVOT	68
				158	REF 240633-1	BUSHING	67
				157	REF 455680-1	LEVER, INTERMEDIATE	66
				156	REF 240629-1	BLOCK, PIVOT	65
				155	REF 240632-2	SCREW, ADJUSTMENT, FEED ROD	64
				154	REF 240659-3	PIN, CAM ROLLER	63
				153	REF 240658-1	ROLLER, CAM	62
				152	REF 454398-2	ROD, FEED	61
				151	REF 454178-1	GUIDE, FEED ROD	60
				150	REF 454220-1	CAP, HOUSING	59
				149	REF 454485-1	HOUSING	58
				148			57
				147	1 690542-2	PAWL, FEED	56
				146	REF 240624-1	PIN, FEED FINGER	55
				145	REF 691499-1	SPRING, FEED FINGER	54
				144	REF 690541-1	FINGER, FEED	53
				143	REF 455679-1	LEVER, TERMINAL FEED ARM	52
				142	1 811242-2	BUMPER, HOLDDOWN	51
				141	1 690753-1	SPACER, TONKER	50
				140	1 7-21002-9	BOLT, CRIMPER	49
				139	1 690501-4	CAM POST-FEED STROKE 1 5/8	48
				138			47
				137	1 459456-1	APPL. BASIC SUB-ASSY	46
				136	1 690191-1	PLUG, NYLON	45
				135	1 455673-1	RAM	44
				134	1 690125-1	WASHER, LAMINATED	43
				133	1 690124-1	WASHER, RAM	42
				132		DISC, SPACER	41
				131	2 23241-6	BALL, STEEL	40
				130	2 690170-1	SPRING, COMPRESSION	39
				129	1 690142-1	DISC, INSULATION	38
				128	1 7-69041-8	DISC, WIRE	37
				127	1 22480-5	WASHER, SPRING	36
				126	1 690212-1	POST, RAM	35
				125	1 1-690786-1	SUPPORT, TERMINAL	34
				124	REF 455675-1	PLATE, BASE	33
				123	1 690432-3	SCREW, ADJUSTMENT	32
				122			31
				121	REF 455689-1	BLOCK, STRIP GUIDE ADJ	30
				120	1 455814-3	PLATE, STRIP GUIDE	29
				119	1 1-455888-0	SPACER, F. SHEAR DEPRESSOR	28
				118	2 1-22284-0	SPRING, DRAG	27
				117	1 240793-1	LEVER, DRAG RELEASE	26
				116	1 240792-1	DRAG, STOCK	25
				115	1 690504-8	GUIDE, STRIP REAR	24
				114	1 690438-1	GUIDE, STRIP FRONT	23
				113			22
				112	REF 4-22284-9	SPRING, FEED RETURN	21
				111			20
				110	1 690472-2	STRIPPER	19
				109		HOLDER, TERMINAL	18
				108		GUARD, CHIP REAR	17
				107	1 691667-1	GUARD, CHIP FRONT	16
				106		PLATE, SHEAR REAR	15
				105		HOLDER, SHEAR REAR	14
				104		SHEAR, FLOAT REAR	13
				103	1 5-22280-0	SPRING, SHEAR	12
				102	1 690461-1	STOP, SHEAR	11
				101	1 690459-1	HOLDER, SHEAR FRONT	10
				80	1 454276-1	SHEAR, FLOAT FRONT	9
				79	1 5-690512-3	ANVIL	8
				78		SPACER, DEPRESSOR REAR	7
				77		DEPRESSOR, SHEAR REAR	6
				76	1 455889-9	DEPRESSOR, SHEAR FRONT	5
				75	1 1-238011-0	SPACER, TUBULAR, INS CRIMPER	4
				74	1 456134-3	CRIMPER, INSULATION	3
				73	1 455888-3	SPACER, CRIMPER	2
				72	1 456406-7	CRIMPER, WIRE	1

TERM APPL SPEC 114-2082

CRIMPING DATA				THIS APPLICATOR WILL APPLY	
PAD LETTER	CRIMP HEIGHT	WIRE SIZE	WIRE STRIP LENGTH	62139	
A	.061	16			
B	.053	18			
C	.049	20			
D	NOT USED				
CRIMP WIRE	SIZE .090	TYPE F	FEED .535	USED ON	MACH NO.
INSULATION	.140	F			
INSULATION RANGE	.1060-.110	WIRE RANGE 20-16	APPLICATOR INSTRUCTION	AI 8040	
REMARKS AMPOMATOR (FEED SIDE ONLY)					

SET UP GAGE 458637-1	LAYOUT NO. 674	AMP INCORPORATED HARRISBURG, PENNA.
DRAWN R. BENNETT	APPROVED Ken Bennett	LOC A C 687966-1
CHECKED 1-21-73	REL. 1-3-73	REV. E

APPLICATOR MINIATURE QUICK CHANGE
 HD SIDE-FEED (.187 SERIES PIGGY-BACK FASTON)

REV	DATE	DESCRIPTION	BY	CHK
1	01-20-73	REV PER ECN		
2	01-20-73	REV PER ECN		
3	01-20-73	REV PER ECN		
4	01-20-73	REV PER ECN		
5	01-20-73	REV PER ECN		
6	01-20-73	REV PER ECN		
7	01-20-73	REV PER ECN		
8	01-20-73	REV PER ECN		
9	01-20-73	REV PER ECN		
10	01-20-73	REV PER ECN		