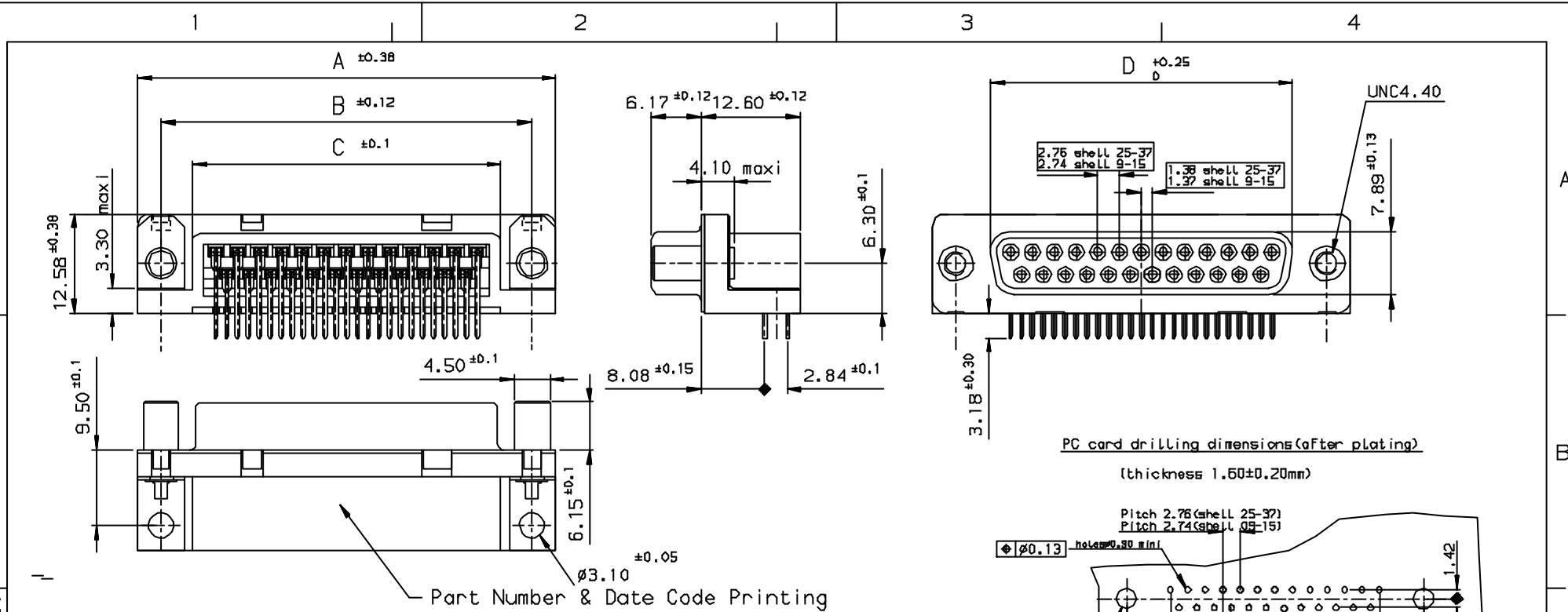


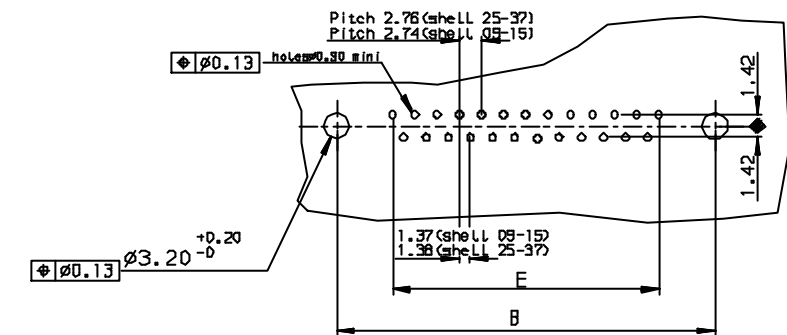
Tous droits strictement réservés. Reproduction ou communication à des tiers interdite sans autorisation écrite de la propriété de FCI. Droits de reproduction FCI.

FCI

All rights strictly reserved. Reproduction or communication to third parties in any form without the written authorization of the property of FCI. Copyright FCI.



PC card drilling dimensions (after plating)
(thickness 1.60 ± 0.20 mm)



SHELL	A ± 0.38	B ± 0.12	C ± 0.10	D ± 0.25	E ± 0.07	PART NUMBER
09	30.81	24.99	16.96	16.21	10.96	D09533E4UV00**
15	39.14	33.32	25.18	24.54	19.18	D15533E4UV00**
25	53.03	47.04	39.12	38.25	33.12	D25533E4UV00**
37	69.32	63.50	55.68	54.71	49.68	D37533E4UV00**

REQUIREMENTS

Technical characteristics:

Shell: steel tin plated
 Insulators: self-extinguishing black polyester, UL Class 94V0
 Contacts size 20: phosphor bronze, gold flash on mating end, bright tin on termination end over nickel on entire contact
 Cycles > 200

Metal plate for electrical continuity: brass, tin plated
 Screwlock: brass, tin plated

Electrical characteristics:

max. current rating: 5A
 Test voltage: 1000V
 Rated voltage: 300V
 Contact resistance: < 15m Ω
 Shell resistance: < 5m Ω
 Insulation resistance: > 5000M Ω

Climatic characteristics:

Operating temperature range: -55 $^{\circ}$ C +125 $^{\circ}$ C

Dimensions:

In accordance with MIL-C-24308

LF FOR LEAD FREE

FOR ROHS DETAILS REFER DWG. NO. C01-8646-0000

Utr	Eon no	Dr	date
b	105-0124	J8	27/7/05

Dr JOHN SLEEBA 7/4/93 Eng GEORGE VJ 7/4/93 Chr GEORGE VJ 27/7/05 Appr K Somasundaram 27/7/05		Product Family Spec ref Material	Tolerance LINEAR ± 0.1 ANGULAR $\pm 1^{\circ}$	Projection 	Size A3	Scale MM
		Title SOCKET CONNECT.DELTA D right angle screwlock & metal plate		Dwg no C01-8646-0157		Rev. b
Catalog no DELTA-D		CUSTOMER COPY		Sheet 1 of 1		

INDEX	DATE	REVISION DESCRIPTION
b	27/7/05	LEAD FREE DETAILS ADDED