

## Wireless Module

### WYSBMVGX8

Wireless Module: 802.11bgn, Bluetooth® & FM



#### Key Features

- IEEE802.11b/g/n standard conformity, BT3.0, 2.1+EDR
- FM Transmitter / Receiver (US, Europe)
- Low standby current (with advanced power save and sleep mode)
- Transmit speed : 11/5.5/2/1 Mbps(11b), 54/48/36/24/18/12/9/6 Mbps(11g), 150~6.5 Mbps (11n)
- Channel Number : 1 to 13 channel (11bg), 79 channel (BT)
- Interface : SDIO, PCM
- Built-in EEPROM, 2G-PA, SAW for cellular phone
- Multi Clock support: 26, 38.4 MHz
- Security: WEP (64/128), TKIP, AES, WPA/WPA2, WAPI
- Small Outline: 8.5 x 8.0 x 1.2(Max) mm, Metal case package
- RoHS Conformity

#### for Detail

[Overview](#)  
[Brief Data Report](#)

#### Evaluation Board



#### WBSBMVGX8-1

Evaluation Board for WLAN module WYSBMVGX8 with SDIO interface.

### WYSBCVGX7

Wireless Module: 802.11bgn



#### Key Features

- IEEE802.11b/g/n standard conformity
- Low standby current (with advanced power save and sleep mode)
- Transmit speed : 11/5.5/2/1 Mbps(11b), 54/48/36/24/18/12/9/6 Mbps(11g), 150~6.5 Mbps (11n)
- Channel Number : 1 to 13 channel (11bg)
- Interface : SDIO
- Built-in EEPROM, 2G-PA, Crystal, BPF
- Security: WEP (64/128), TKIP, AES, WPA/WPA2, WAPI
- Small Outline: 9.0 x 8.8 x 1.35(Max) mm
- Package: Metal case package
- RoHS Conformity

#### for Detail

[Overview](#)  
[Brief Data Report](#)

#### Evaluation Board



#### WBSBCVGXA-1

Evaluation Board for WLAN module WYSBCVGX7/WYSBCVGXA with SDIO interface.

### WYSBCVGXA

Wireless Module: 802.11bgn & Bluetooth®



**Key Features**

- IEEE802.11b/g/n standard conformity, BT3.0,2.1+EDR
- Low standby current (with advanced power save and sleep mode)
- Transmit speed : 11/5.5/2/1 Mbps(11b), 54/48/36/24/18/12/9/6 Mbps(11g), 150~6.5 Mbps (11n)
- Channel Number : 1 to 13 channel (11bg), 79 channel (BT)
- Interface : SDIO, PCM
- Built-in EEPROM, 2G-PA, Crystal, BPF
- Security: WEP (64/128), TKIP, AES, WPA/WPA2, WAPI
- Small Outline: 9.0 x 8.8 x 1.35(Max) mm
- Package: Metal case package
- RoHS Conformity

**for Detail**

[Overview](#)  
[Brief Data Report](#)

**WYSBMVGX4**

**Wireless Module: 802.11abgn**



**Key Features**

- IEEE802.11a/b/g/n standard conformity
- Low standby current (with advanced power save and sleep mode)
- Transmit speed : 11/5.5/2/1 Mbps(11b), 54/48/36/24/18/12/9/6 Mbps(11a/g), 150~6.5 Mbps (11n)
- Channel Number : 1 to 13 channel (11bg), W52/W53/W56(11a)
- Interface : SDIO
- Multi Clock support: 26, 38.4 MHz
- Built-in EEPROM, Diplexer, 2G-PA, 5G-PA, 5G-LNA
- Security : WEP (64/128), TKIP, AES, WPA/WPA2,WAPI
- Small Outline : 13.1 x 6.1 x 1.35(Max) mm
- Package: Metal case package
- RoHS Conformity

**for Detail**

[Overview](#)  
[Brief Data Report](#)

**WYSBMVGX4-I**

**Wireless Module: 802.11abgn, Wide Temperature**



**Key Features**

**Evaluation Board**



**WYSBVCVGA-1**

Evaluation Board for WLAN module WYSBVCVGA with SDIO interface.

**Evaluation Board**



**WYSBMVGXB-1**

Evaluation Board for WLAN module WYSBMVGX4/WYSBMVGXB with SDIO interface.

**Evaluation Board**

- IEEE802.11a/b/g/n standard conformity
- Low standby current (with advanced power save and sleep mode)
- Transmit speed : 11/5.5/2/1 Mbps(11b), 54/48/36/24/18/12/9/6 Mbps(11a/g), 150~6.5 Mbps (11n)
- Channel Number : 1 to 13 channel (11bg), W52/W53/W56(11a)
- Interface : SDIO
- Multi Clock support: 26, 38.4 MHz
- Built-in EEPROM, Diplexer, 2G-PA, 5G-PA, 5G-LNA
- Security : WEP (64/128), TKIP, AES, WPA/WPA2, WAPI
- Small Outline : 13.1 x 6.1 x 1.35(Max) mm
- Package: Metal case package
- RoHS Conformity

#### for Detail

[Overview](#)

[Brief Data Report](#)

## WYSBMVGXB

Wireless Module: 802.11abgn & Bluetooth®



#### Key Features

- IEEE802.11a/b/g/n standard conformity, BT3.0, 2.1+EDR
- Low standby current (with advanced power save and sleep mode)
- Transmit speed : 11/5.5/2/1 Mbps(11b), 54/48/36/24/18/12/9/6 Mbps(11a/g), 150~6.5 Mbps (11n)
- Channel Number : 1 to 13 channel (11bg), W52/W53/W56(11a), 79 channel (BT)
- Interface : SDIO, PCM
- Multi Clock support: 26, 38.4 MHz
- Built-in EEPROM, Diplexer, 2G-PA, 5G-PA, 5G-LNA
- Security: WEP (64/128), TKIP, AES, WPA/WPA2, WAPI
- Small Outline: 13.1 x 6.1 x 1.35(Max) mm
- Package: Metal case package
- RoHS Conformity

#### for Detail

[Overview](#)

[Brief Data Report](#)

## WYSAAVDX7

Wireless Module: 802.11bgn with Antenna & Connector



#### Key Features

- IEEE802.11b/g/n standard conformity
- Low standby current (with advanced power save and sleep mode)
- Transmit speed : 11/5.5/2/1 Mbps(11b), 54/48/36/24/18/12/9/6 Mbps(11g), 150~6.5 Mbps (11n)
- Channel Number : 1 to 13ch (11bg)
- Interface : SDIO
- Built-in EEPROM, X'tal, 2G-PA, BPF
- Security : WEP (64/128), TKIP, AES, WPA/WPA2, WAPI
- Small Outline : 35.0 x 15.0 x 2.9 (Max) mm, Metal case package
- RoHS Conformity

#### for Detail

[Overview](#)

[Brief Data Report](#)



#### WBSBMVGX4-1

Evaluation Board for WLAN module WYSBMVGX4-1 with SDIO interface.

#### Evaluation Board



#### WBSBMVGXB-1

Evaluation Board for WLAN module WYSBMVGX4/WYSBMVGXB with SDIO interface.

#### Evaluation Board



#### WBSAAVDX7

Evaluation Board for WLAN module WYSAAVDX7 with SDIO interface.

**WYSBCVJXM**

Wireless Module: 802.11abgn 2x2 MIMO & Bluetooth®

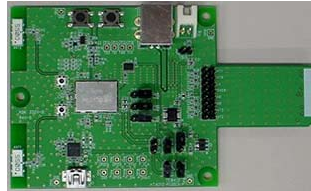
**Key Features**

- IEEE802.11a/b/g/n 2x2 MIMO standard conformity, BT4.0
- Low standby current (with advanced power save and sleep mode)
- Transmit speed : 11/5.5/2/1 Mbps(11b), 54/48/36/24/18/12/9/6 Mbps(11a/g), 300~6.5 Mbps (11n, MCS15~0, HT20/40)
- Channel Number : 1 to 13 channel (11bgn), W52/W53/W56/W58(11an), 79 channel (BT)
- Interface : SDIO, USB, PCM
- Built-in Diplexer, 2G-PA, 5G-PA, 5G-LNA, EEPROM, Xtal
- Security: WEP, CCMP, TKIP, AES, WAPI, CMPC, WPA/WPA2(64bit/128bit)
- Outline: 12.5 x 16.8 x 1.65(Max) mm
- Package: Metal case package
- RoHS Conformity

**for Detail**

[Overview](#)

[Brief Data Report](#)

**Evaluation Board****WBSBCVJXM**

Evaluation Board for WLAN module WYSBCVJXM with SDIO and USB interface