

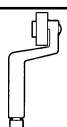
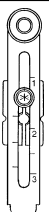
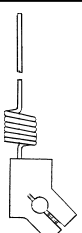

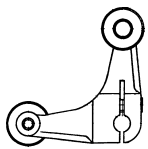
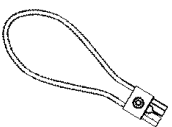


LEVERS FOR D4A-N SIDE ROTARY SWITCHES

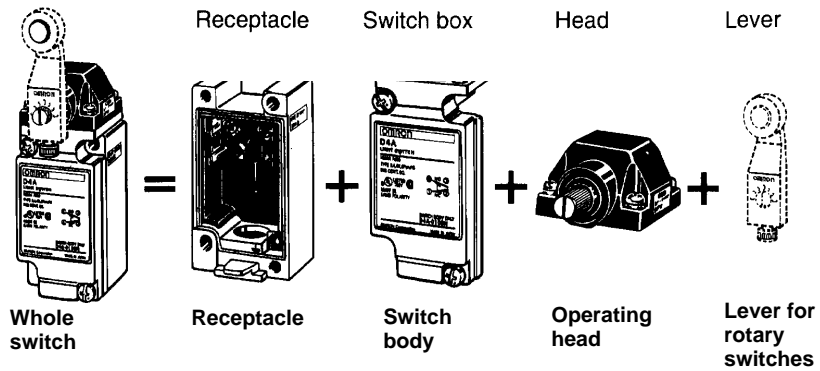
| Description | Lever radius | Material | Diameter | Width | Part number | |
|--|---------------------------------|------------------|-------------------|-------------------|------------------|-----------------|
| Standard roller levers, front mount  | 38.1 mm (1.5 in) | Stainless steel | 19.1 mm (0.75 in) | 7.9 mm (0.31 in) | D4A-A00 | |
| | 33.7 mm (1.33 in) | Stainless steel | 17.5 mm (0.69 in) | 15 mm (0.59 in) | D4A-B06 | |
| | 38.0 mm (1.5 in) | Ball bearing | 17.0 mm (0.67 in) | 6 mm (0.24 in) | WL-1A400 | |
| | 38.0 mm (1.5 in) | Nylon | 17.5 mm (0.69 in) | 30 mm (1.18 in) | WL-1A104 | |
| | 50.0 mm (1.97 in) | Stainless steel | 17.5 mm (0.69 in) | 15 mm (0.59 in) | WL-1A200 | |
| | 63.0 mm (2.48 in) | Stainless steel | 17.5 mm (0.69 in) | 7.0 mm (0.28 in) | WL-1A300 | |
| Standard roller lever, back mount  | 38.1 mm (1.5 in) | Stainless steel | 19.1 mm (0.75 in) | 7.9 mm (0.31 in) | D4A-A10 | |
| | 38.1 mm (1.5 in) | Nylon | 50 mm (1.97 in) | 7.0 mm (0.28 in) | WL-1A106 | |
| Offset roller lever  | Front mount | 38.1 mm (1.5 in) | Stainless steel | 19.1 mm (0.75 in) | 7.9 mm (0.31 in) | D4A-A20 |
| | Back mount | 38.1 mm (1.5 in) | Stainless steel | 19.1 mm (0.75 in) | 7.9 mm (0.31 in) | D4A-A30 |
| Adjustable roller lever, front mount  | 25 to 89 mm (0.98 to 3.5 in) L | Nylon | 17.5 mm (0.69 in) | 7.0 mm (0.28 in) | WL-2A111 | |
| | 33 to 91 mm (1.3 to 3.6 in) L | Stainless steel | 19.1 mm (0.75 in) | 7.4 mm (0.29 in) | D4A-C00 | |
| Spring rod lever  | 290 mm (11.5 in) L | Stainless steel | 2 mm (0.08 in) | — | WL-4A201 | |
| Adjustable rod lever  | 150 mm (5.91 in) L | Stainless steel | 3 mm (0.12 in) | — | D4A-D00 | |
| | 350 to 380 mm (13.8 to 15 in) L | Stainless steel | 3.2 mm (0.13 in) | — | WL-3A100 | |
| Fork roller lever  | L.H. front/ R.H. back | 38.1 mm (1.5 in) | Stainless steel | 19.1 mm (0.75 in) | 7.9 mm (0.31 in) | D4A-E00 |
| | | 38.0 mm (1.5 in) | Nylon | 17.5 mm (0.69 in) | 7.0 mm (0.28 in) | WL-5A100 |
| | L.H. back/ R.H. front | 38.1 mm (1.5 in) | Stainless steel | 19.1 mm (0.75 in) | 7.9 mm (0.31 in) | D4A-E10 |
| | | 38.0 mm (1.5 in) | Nylon | 17.5 mm (0.69 in) | 7.0 mm (0.28 in) | WL-5A102 |
| Both front | 38.1 mm (1.5 in) | Stainless steel | 19.1 mm (0.35 in) | 7.9 mm (0.31 in) | D4A-E20 | |
| Looped rod  | 150 mm (6 in) L | Nylon | 4 mm (0.16 in) | 60 mm (2.36 in) | D4A-F00 | |

REPLACEMENT PARTS

Building a Part Number

The D4A-N family of switches features plug-in construction with interchangeable parts for simplified long-term maintenance. The illustration at right shows the parts that make up a whole switch, as well as how to read a part number as the sum of its parts.

Note: Compatibility of D4A-N parts with Omron's former D4A series is limited to interchangeable **receptacles** only. D4A switch bodies and operating heads cannot be used to replace similar D4A-N parts.



D4A-1101N = D4A-1000N + D4A-0100N + D4A-0001N + D4A-A00 or WL-1A200 (ordered separately)

Receptacles

| Description | Part number |
|---|------------------|
| SPDT double break | D4A-1000N |
| DPDT double break, also used for sequential operation and center neutral operation switches | D4A-2000N |

Switch Bodies

Omron offers two economical solutions for long-term maintenance of D4A-N limit switches. Choose a complete switch body with a built-in switch, or just replace the internal switch by removing the two screws holding it in place.

| Description | Indicator type | Body with built-in switch | Internal switch only |
|-------------------------------------|----------------------------|---------------------------|----------------------|
| SPDT double break | No indicator | D4A-0100N | D4A-S10N |
| | Neon lamp indicator | D4A-0300N | — |
| | LED indicator, 6 A, 24 VDC | D4A-0E00N | — |
| DPDT double break | No indicator | D4A-0500N | D4A-S50N |
| Sequential operating type, DPDT | No indicator | D4A-0700N | D4A-S70N |
| Center neutral operating type, DPDT | No indicator | D4A-0900N | D4A-S90N |

Operating Heads

For side rotary operating heads listed below, be sure to order an actuator lever from the large selection of D4A and WL parts listed on the second page of this data sheet.

| Description | Part number |
|---------------------------------------|------------------|
| Standard side rotary | D4A-0001N |
| High precision side rotary | D4A-0002N |
| Low torque side rotary | D4A-0003N |
| High precision/low torque side rotary | D4A-0004N |
| Maintained contact side rotary | D4A-0005N |
| Sequential operating side rotary | D4A-0017N |
| Center neutral operating side rotary | D4A-0018N |

| Description | Part number |
|--------------------------------|--------------------|
| Plain side plunger | D4A-0006N |
| Vertical side roller plunger | D4A-0007-VN |
| Horizontal side roller plunger | D4A-0007-HN |
| Adjustable side plunger | D4A-0008N |
| Plain top plunger | D4A-0009N |
| Top roller plunger | D4A-0010N |
| Adjustable top plunger | D4A-0011N |

| Description | Part number |
|----------------------------------|------------------|
| Spring wire wobble lever | D4A-0012N |
| Plastic rod wobble lever | D4A-0014N |
| Stainless steel rod wobble lever | D4A-0024N |
| Cat whisker wobble lever | D4A-0015N |
| Coil spring wobble lever | D4A-0016N |