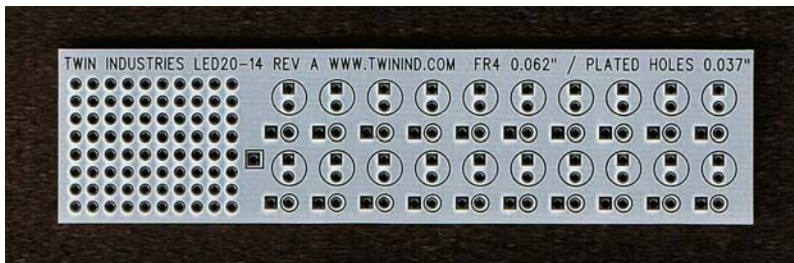




Twin Industries LED-series prototyping boards provide a versatile solution for LED projects. The boards have white soldermask to enhance LED luminosity, common bus power trace, locations for resistors to control individual LEDs, prototyping area for drivers, and locations for other components.

### FEATURES:

- FR4 laminate, 0.062" thick
- Prototyping holes spaced on a 0.1" x 0.1" grid
- Hole interior diameter = 0.037"
- Plated through holes with pads on both sides of board



PART NUMBER

LED20-14 (front view)

Board size: 1.0" x 4.0"



PART NUMBER

LED20-14 (rear view)

Board size: 1.0" x 4.0"

For additional product information, please visit [www.twindind.com](http://www.twindind.com)

Contact information: 925-866-8946 (phone) 925-866-8937 (fax) Sales@twindind.com