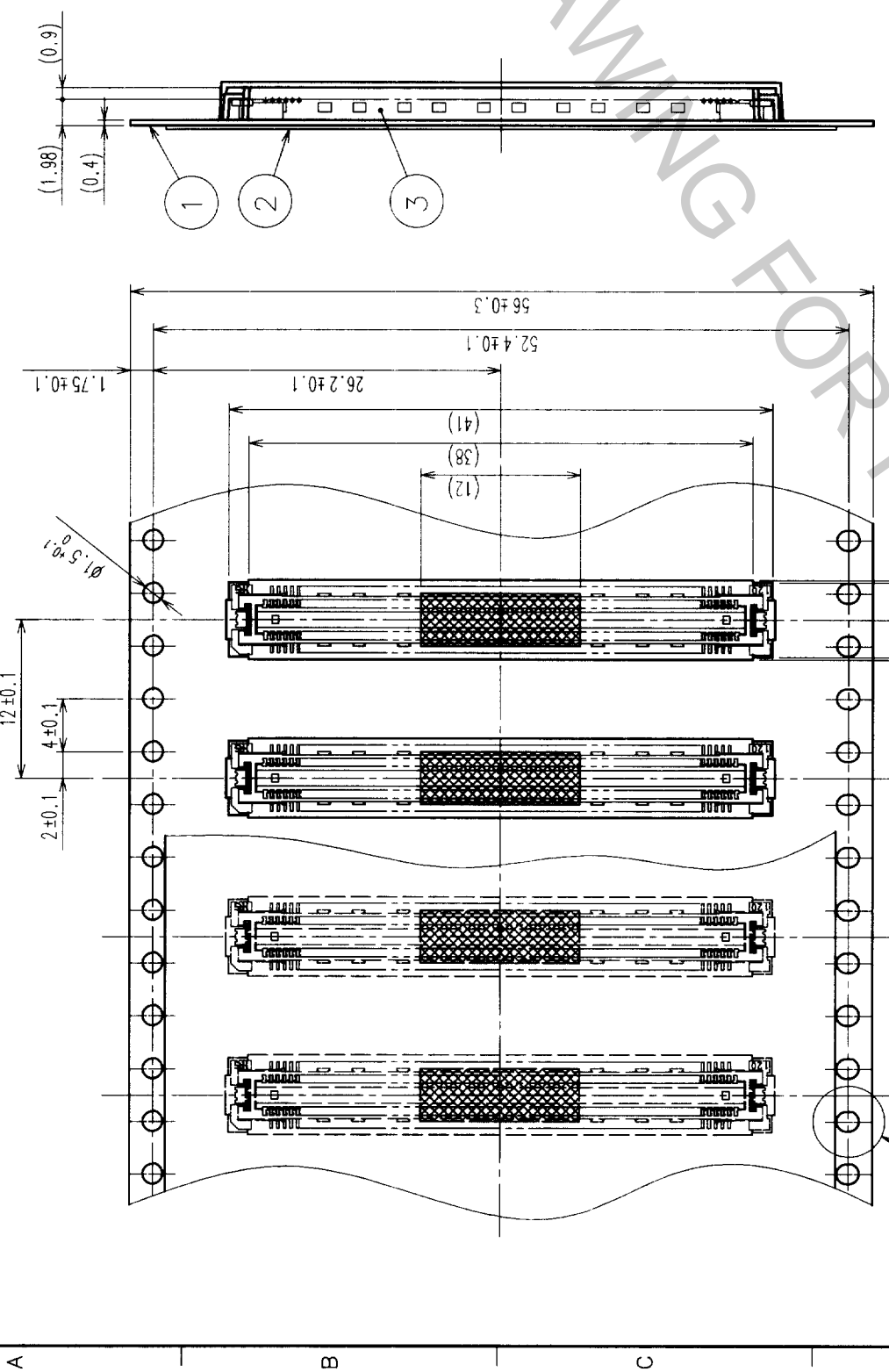


COUNT	DESCRIPTION OF REVISIONS	BY	CHKD	DATE	COUNT	DESCRIPTION OF REVISIONS	BY	CHKD	DATE
1					1				
2					2				
3					3				

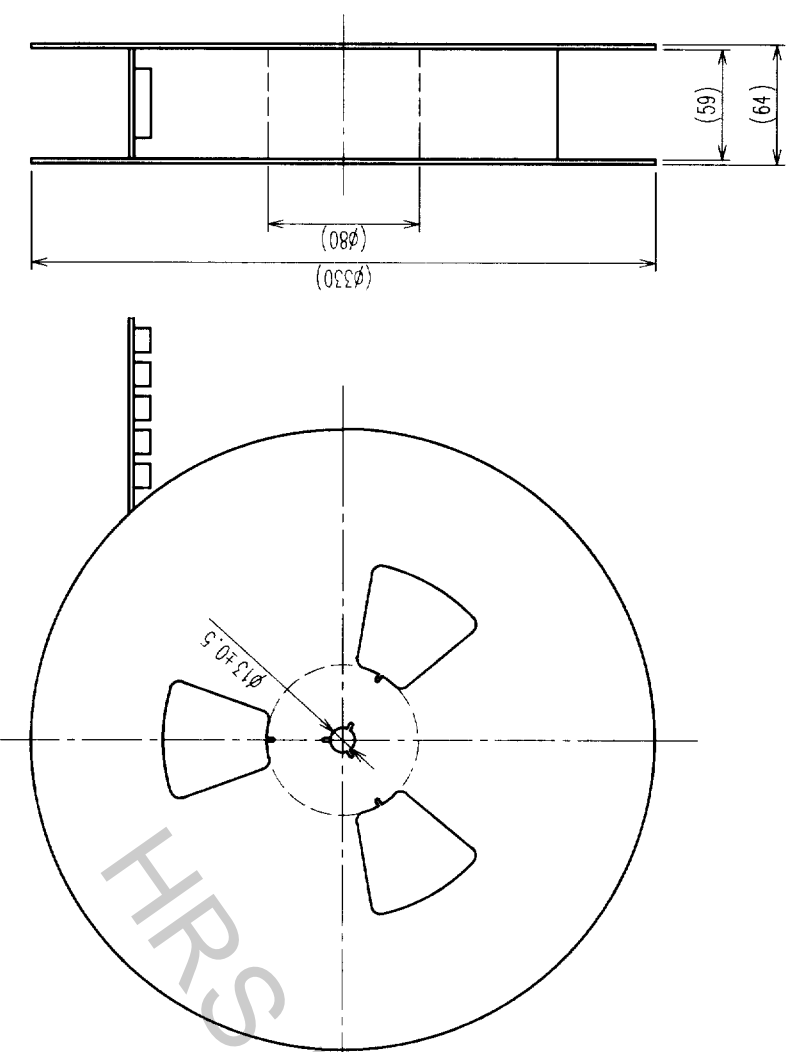


THE DIRECTION OF PULLING OUT →

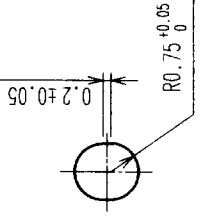
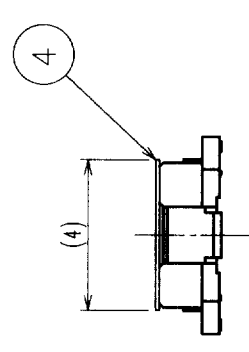
A (5:1)

DETAIL FOR VACUUM PICKUP (5:1)

REELED DIMENSION (Free)



- NOTES 1 REEL: 1000 CONNECTORS.
- 2 MINIMUM 10 COMPARTMENTS FROM BOTH REEL ENDS REMAIN EMPTY.
- 3 THIS PRODUCT HAS NO POLARITY TO TAPE AND REEL PACKAGING.



2	PET	TOP COVER TAPE	4	POLYIMIDE	(TAPE FOR VACUUM PICKUP)
1	PS	EMBOSSED CARRIER TAPE	3	(CONNECTOR)	
NO.	MATERIAL	FINISH, REMARKS	NO.	MATERIAL	FINISH, REMARKS
DRAWING FOR PACKING					
CODE NO. (OLD)		DRAWN		DESIGNED	CHECKED
CL		Mitsuhisa		M. Sakabe	J. Yamamoto
		99.10.27		99.10.27	99.10.28
DRAWING NO.		PART NO.			
EDC3-152107-02		FX11LB-140P-SV(22)			
SCALE		CODE NO.			
2:1		CL573-0055-3-22			
UNITS		HIT			
		HIROSE ELECTRIC CO., LTD			

TO	
PCK	