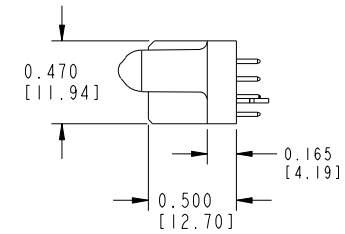
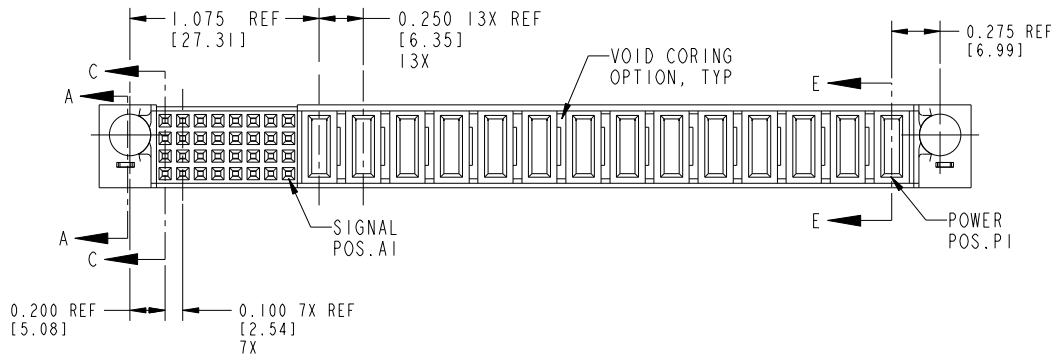
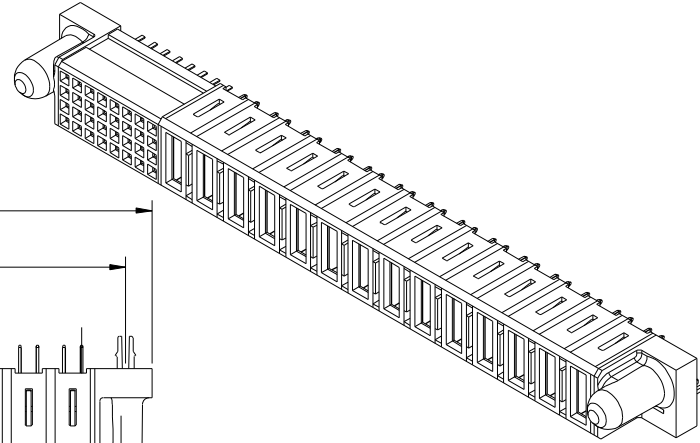
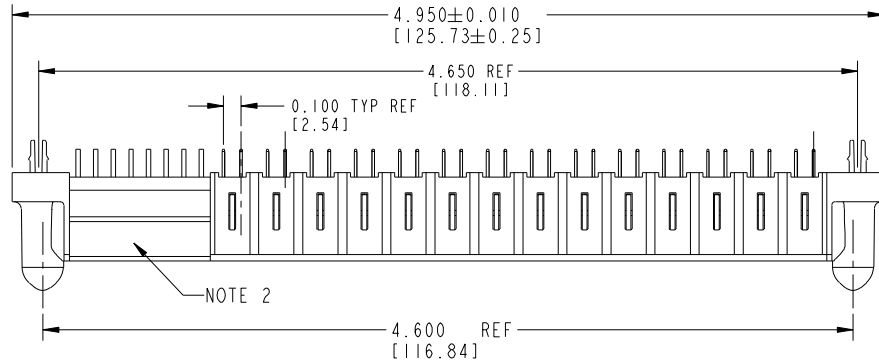


Tous droits strictement réservés. Reproduction ou communication à des tiers interdite sous quelque forme que ce soit sans autorisation écrite du propriétaire. Propriété de c.FCI. Droits de reproduction FCI.



All rights strictly reserved. Reproduction or issue to third parties in any form whatever is not permitted without written authority from the proprietor. Property of FCI. Copyright FCI.

PRODUCT NUMBER  
51419-XX001--  
NOTE 3



mat'l code				NOTE 1		tolerances unless otherwise specified		CUSTOMER		FCI	
ltr	ecn no.	dr	date	linear	.XX±.01/0.X±0.3	projection	COPY	www.fciconnect.com			
J	DG07-0188	JMG	05-08-07		.XXX±.005/0.XX±0.13		title	14P + 32S			
				angles	.XXX±.002/.XXX±.051			VERTICAL SOLDER RECEPTACLE			
					0°±2°		product family	PWRBLADE		code	
E	V00791	MSG	03-25-00	dr	C. BAROT 08-24-99			size	dwg no		213
F	V00989	MSG	05-02-00	enrg	J. BROWN 08-20-99	scale	A	51419		sheet	
G	V01895	EKK	08-24-00	chr	J. BROWN 08-26-99			1:1			1 of 3
H	V02319	JRW	10-09-00	appd	J. BROWN 08-26-99						
sheet index	revision sheet	J	J	J							
		1	2	3							

cage code 22526

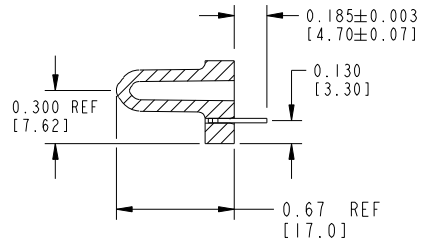
Pro/E

Tous droits strictement réservés. Reproduction ou communication à des tiers interdite sous quelque forme que ce soit sans autorisation écrite du propriétaire. Propriété de c.FCI. Droits de reproduction FCI.

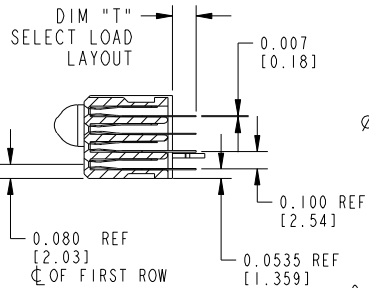


All rights strictly reserved. Reproduction or issue to third parties in any form whatever is not permitted without written authority from the proprietor. Property of FCI. Copyright FCI.

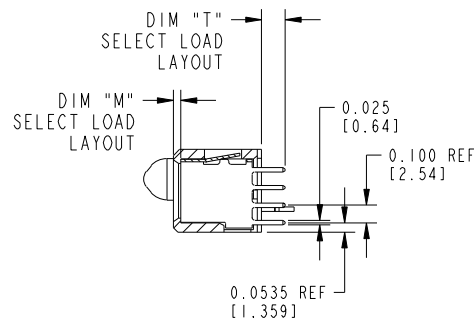
PRODUCT NUMBER  
51419-XX001--  
NOTE 3



SECTION A-A



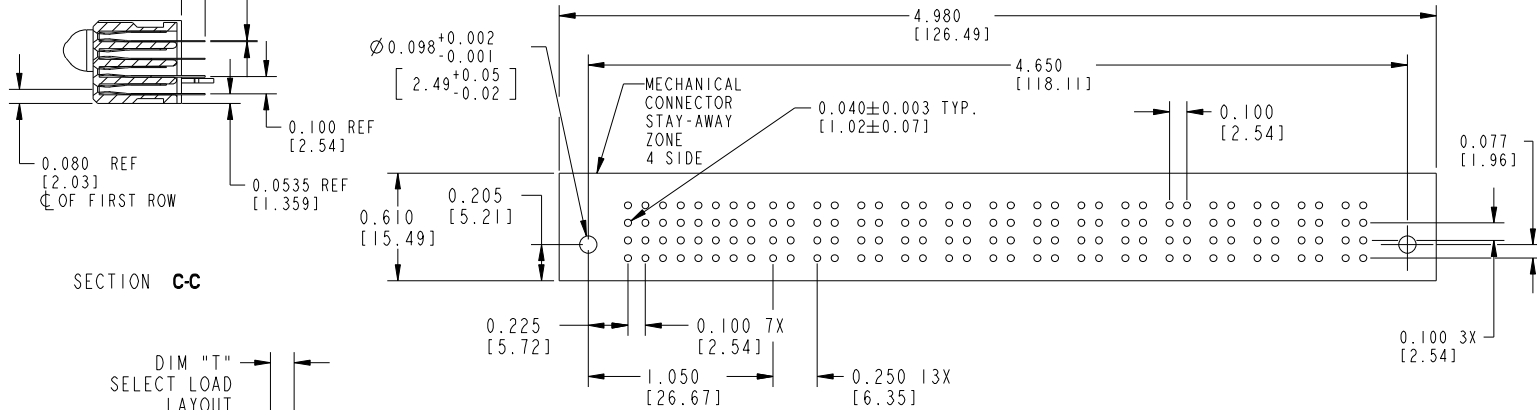
SECTION C-C



SECTION E-E

CONNECTORS - NOTES:

- HOUSING MATERIAL: GLASS FILLED HIGH TEMP.THERMOPLASTIC, FLAME RETARDANT PER 'UL94 V-O.'  
SIGNAL PIN MATERIAL: COPPER ALLOY  
POWER CONTACT MATERIAL: COPPER ALLOY
  - MANUFACTURER'S NAME, P/N, AND LOT CODE TO APPEAR ON THIS SURFACE
  - 51419-XX001;51419-XX001LF PLATING SPEC. SEE PRINT:10064183
- PCB - NOTES:
- ALL DIMENSIONS ARE BASIC UNLESS OTHERWISE SPECIFIED.
  - ALL THROUGH HOLES ARE LOCATED WITH A TRUE POSITION OF .004
  - ALL HOLE DIAMETERS ARE FINISHED HOLE SIZE
  - Ø0.098" THROUGH HOLES ARE UNPLATED
  - Ø.0453/1.151 DRILLED HOLES PLATED WITH .0003/.007 MIN SnPb OVER .001/.03 TO .003/.08 Cu PLATING TO ACHIEVE A .040±.003/1.02±.08 HOLE



RECOMMENDED PCB LAYOUT

mat'l code				tolerances unless otherwise specified		CUSTOMER		FCI	
ltr	ecn no.	dr	date	linear	.XX±.01/.X±0.3	COPY		www.fciconnect.com	
J				projection	.XXX±.005/0.XX±0.13	title		14P + 32S	
				angles	.XXX±.002/.XXX±.051	product family		PWRBLADE	
				dr	0°±2°	size		213	
				enr	C. BAROT 08-24-99	dwg no		sheet	
				chr	J. BROWN 08-20-99	scale		2	
				appd	J. BROWN 08-26-99	A		51419	
sheet index	revision sheet					INCH/MM			
						1:1			
						A			
						cage code		22526	

Pro/E

cage code 22526

Tous droits strictement reserves. Reproduction ou communication a des tiers interdite sous quelque forme que ce soit sans autorisation écrite du propriétaire. Propriete de c FCI. Droits de reproduction FCI.

All rights strictly reserved. Reproduction or issue to third parties in any form whatever is not permitted without written authority from the proprietor. Property of FCI. Copyright FCI.

PRODUCT NUMBER
51419-XX001-- NOTE 3

ITEM NO.	QTY	DIM "M" MATING LENGTH ±.010 [0.25]	DIM "T" TAIL LENGTH ±.010 [0.25]	CONTACT TYPE	PLATING FOR MATING	PLATING FOR TAIL
E	32	N/A [N/A]	0.135 [3.43]	SIGNAL	30 u'' [.76um] Au	SnPb/Sn
PA	14	0.042 [1.07]	0.135 [3.43]	POWER	30 u'' [.76um] Au	SnPb/Sn
HA	2	N/A [N/A]	N/A [N/A]	HOLD-DOWN	N/A [N/A]	SnPb/Sn

PRODUCT No.	ROWS	SIGNAL								POWER																
		E2	8	7	6	5	4	3	2	1	P14	P13	P12	P11	P10	P9	P8	P7	P6	P5	P4	P3	P2	P1	E1	
51419-XX001-- NOTE 3	D C B A		E	E	E	E	E	E	E	PA	PA	PA	PA	PA	PA	PA	PA	PA	PA	PA	PA	PA	PA	PA	PA	

mat'l code				tolerances unless otherwise specified				CUSTOMER			
ltr	ecn no.	dr	date	linear	.XX±.01/0.X±0.3	projection	COPY		www.fciconnect.com		
J					.XXX±.005/0.XX±0.13		title		14 P + 32 S VERTICAL SOLDER RECEPTACLE		
				angles	.XXX±.002/.XXX±.051		product family		PWRBLADE	code	
				dr	0°±2°	scale	size		PWRBLADE	213	
				enr	C. BAROT 08-24-99	1:1	dwg no		51419	sheet	
				chr	J. BROWN 08-20-99					3	
				appd	J. BROWN 08-26-99						
sheet index	revision sheet										

cage code 22526

Pro/E