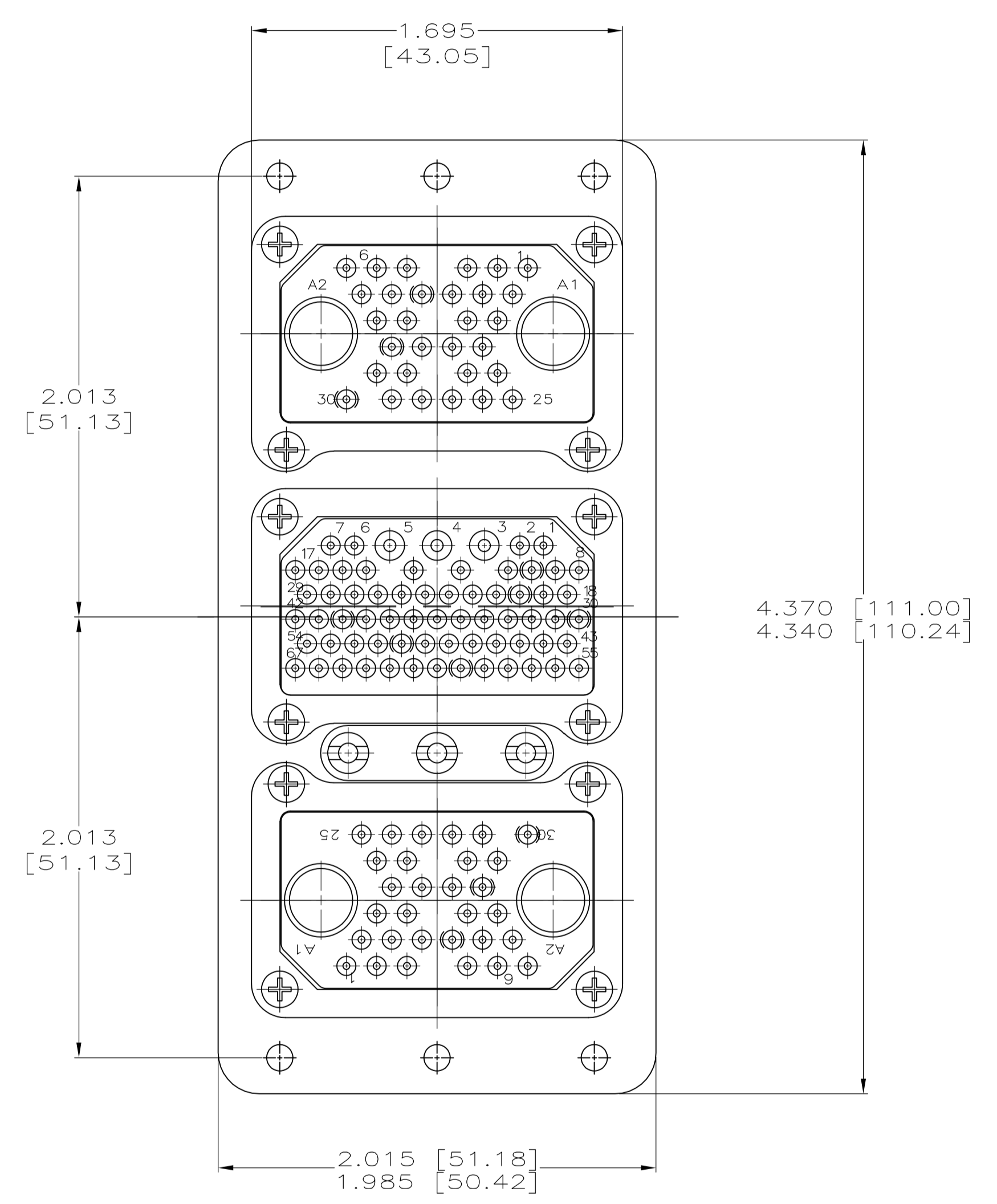
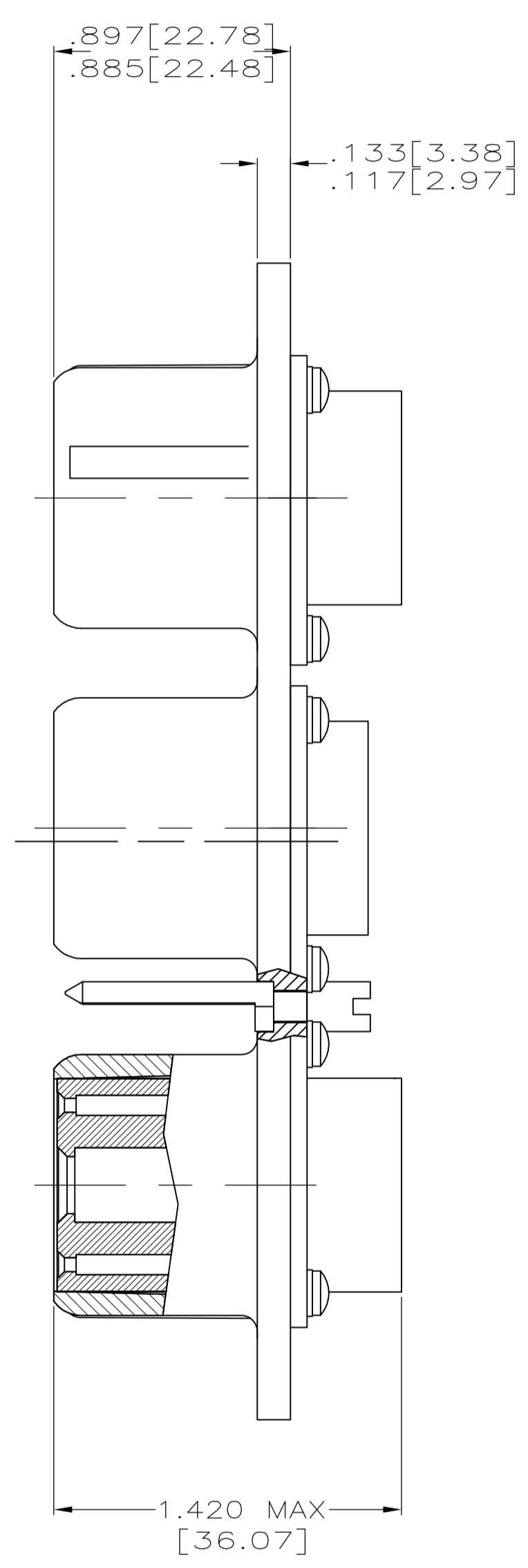
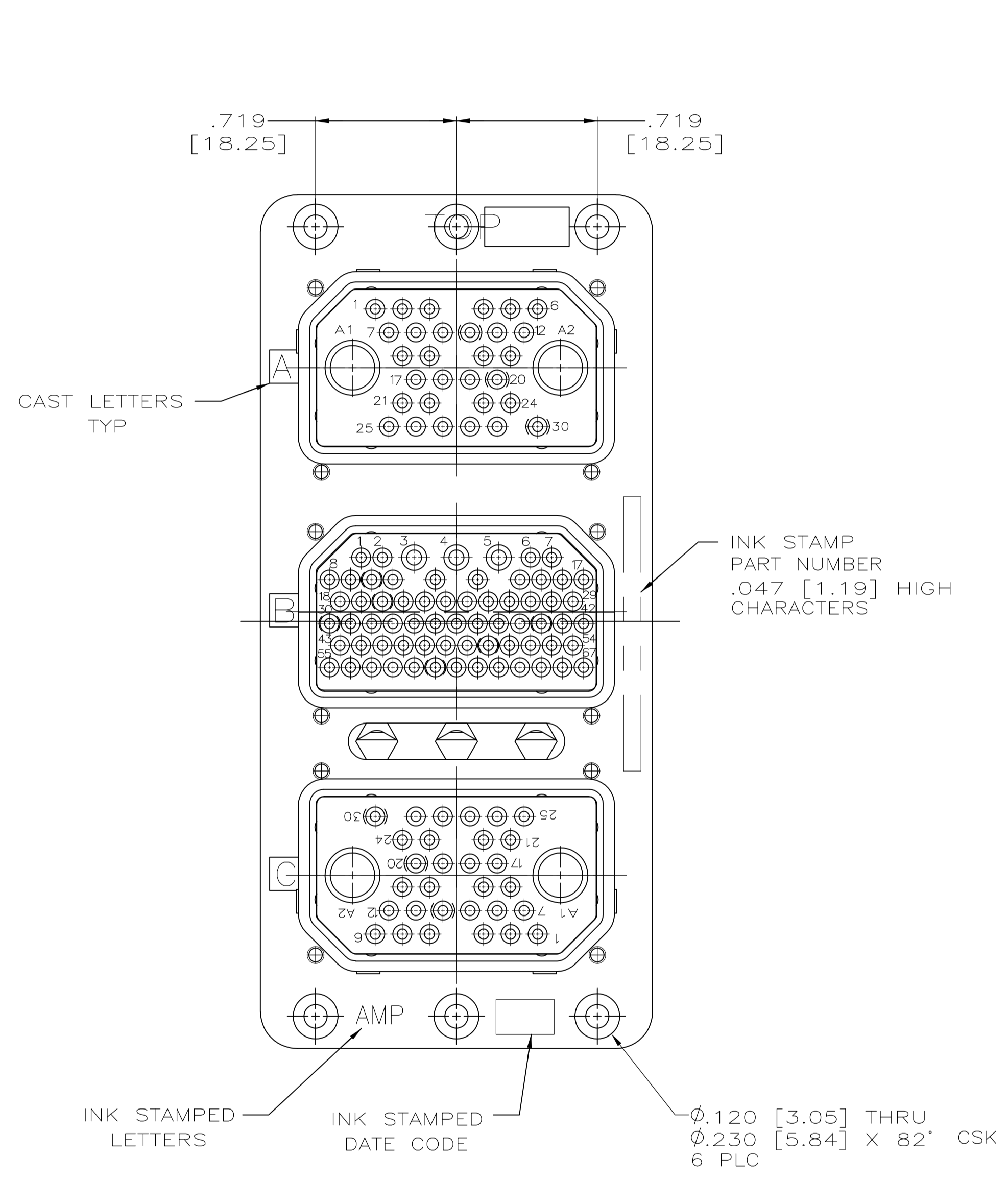


1. MATERIAL AND FINISH:
 SHELL: DIE CAST ALUMINUM ALLOY PER FED. SPEC QQ-A-591.
 STANDARD FINISH: CADMIUM PLATE PER QQ-P-416, TYPE 1,
 CLASS 2 YELLOW CHROMATE CONVERSION.
 INSERT RETENTION PLATE: ALUMINUM ALLOY, BLUE ANODIZE
 PER MIL-A-8625.
 SCREWS AND WASHERS: STAINLESS STEEL, PASSIVATED.
 POLARIZING POSTS: STAINLESS STEEL, PASSIVATED.
 POLARIZING NUTS: BRASS, CADMIUM PLATED.



THIS DRAWING IS A CONTROLLED DOCUMENT.		DWG T. THOMPSON 08JUL98	TE Connectivity
DIMENSIONS: INCHES		CHK R. GROSS 08JUL98	
TOLERANCES UNLESS OTHERWISE SPECIFIED:		APPV R. GROSS 08JUL98	NAME RM3P32C2S67S32C2S-0001 (201) WITH COAX
0 PLC ± -	1 PLC ± -	PRODUCT SPEC	SIZE A1
2 PLC ± -	3 PLC ± -	APPLICATION SPEC	CAGE CODE 00779
4 PLC ± -	ANGLES ± -	WEIGHT	DRAWING NO. 1218349
MATERIAL SEE CALLOUT	FINISH SEE CALLOUT	CUSTOMER DRAWING	RESTRICTED TO —
		SCALE 2:1	SHEET 1 OF 1
		REV A	