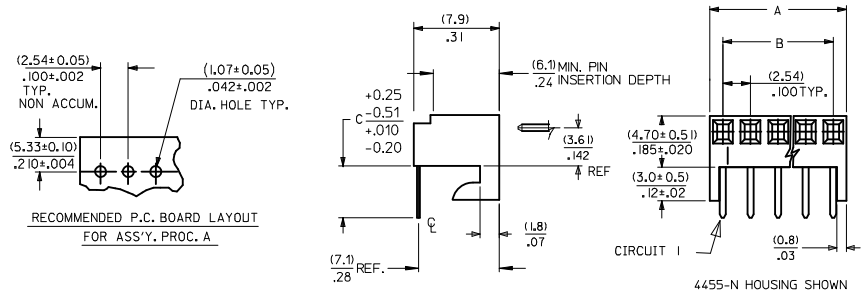
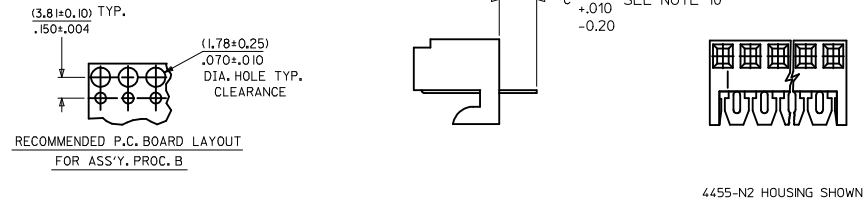


| NO. OF CKTS. | DIM. A | DIM. B |
|--------------|---------------------------|---------------------------|
| 1 | (2.44±.15) .096±.006 | — |
| 2 | (4.98±.15) .196±.006 | (2.54±.10) .100±.004 |
| 3 | (7.52±.15) .296±.006 | (5.08±.10) .200±.004 |
| 4 | (10.06±.15) .396±.006 | (7.62±.10) .300±.004 |
| 5 | (12.60±.18) .496±.007 | (10.16±.13) .400±.005 |
| 6 | (15.14±.18) .596±.007 | (12.70±.13) .500±.005 |
| 7 | (17.68±.20) .696±.008 | (15.24±.15) .600±.006 |
| 8 | (20.22±.20) .796±.008 | (17.78±.15) .700±.006 |
| 9 | (22.76±.20) .896±.008 | (20.32±.15) .800±.006 |
| 10 | (25.30±.25) .996±.010 | (22.86±.20) .900±.008 |
| 11 | (27.84±.25) 1.096±.010 | (25.40±.20) 1.000±.008 |
| 12 | (30.38±.25) 1.196±.010 | (27.94±.20) 1.100±.008 |
| 13 | (32.92±.25) 1.296±.010 | (30.48±.20) 1.200±.008 |
| 14 | (35.46±.25) 1.396±.010 | (33.02±.20) 1.300±.008 |
| 15 | (38.00±.28) 1.496±.011 | (35.56±.23) 1.400±.009 |
| 16 | (40.54±.28) 1.596±.011 | (38.10±.23) 1.500±.009 |
| 17 | (43.08±.28) 1.696±.011 | (40.64±.23) 1.600±.009 |
| 18 | (45.62±.28) 1.796±.011 | (43.18±.23) 1.700±.009 |
| 19 | (48.16±.28) 1.896±.011 | (45.72±.23) 1.800±.009 |
| 20 | (50.70±.30) 1.996±.012 | (48.26±.25) 1.900±.010 |

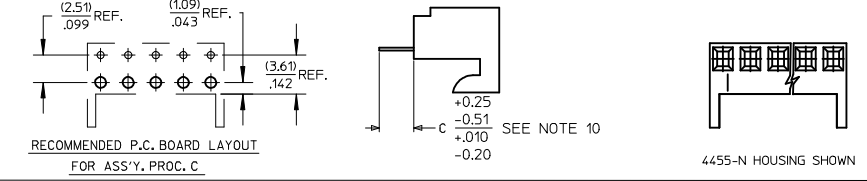
**ASS'Y. PROC. A
RIGHT ANGLE**



**ASS'Y. PROC. B
BOTTOM ENTRY**

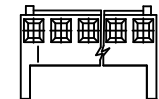


**ASS'Y. PROC. C
TOP ENTRY**



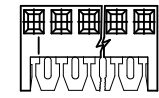
- NOTES:
1. MATERIAL: NYLON, UL 94V-0, COLOR: WHITE
 2. FINISH:
 - (208) - SELECT GOLD: (0.00038)/.000015 MIN., SELECT TIN: (0.00254)/.000100 MIN. OVERALL NICKEL UNDERPLATE: (0.00127)/.000050 MIN.
 - (228) - SELECT GOLD: (0.00076)/.000030 MIN., SELECT TIN: (0.00254)/.000100 MIN. OVERALL NICKEL UNDERPLATE: (0.00127)/.000050 MIN.
 - (231) - SELECT GOLD: (0.00127)/.000050 MIN., SELECT TIN: (0.00254)/.000100 MIN. OVERALL NICKEL UNDERPLATE: (0.00127)/.000050 MIN.
 - (565) - SELECT GOLD: (0.00051)/.000020 MIN., OVERALL NICKEL: (0.00076)/.000030 MIN. OVERALL GOLD FLASH: (0.00005)/.000002 MIN.
 - (P909) - OVERALL TIN: (0.00254)/.000100 MIN.
 3. PARTS CONFORM TO PRODUCT SPECIFICATION PS-10-07.
 4. PACKAGING: SEE CHARTS.
 5. PARTS MUST CONFORM TO SOLDERABILITY SPEC 152.
 6. PARTS ARE STACKABLE END TO END ON (2.54)/.100 CENTERS.
 7. TYPICAL PCB THICKNESS: (1.57)/.062
 8. PART CONFORMS TO CLASS B REQUIREMENTS OF COSMETIC SPECIFICATION PS-45499-002 EXCEPT PROTRUSIONS. PARTS MAY HAVE MORE THAN 2 GATE MARKS.
 9. WHEN MATING ASSEMBLIES THAT USE 4455-BN HOUSINGS TO BREAKAWAY FRICTION LOCK OR POLARIZING HEADERS, THE END BACKWALLS MUST BE REMOVED.
 10. DIMENSION C MEASURED WITH TERMINAL PUSHED IN AGAINST THE STOP.

HOUSING NO. 4455-BN
SEE NOTE 9



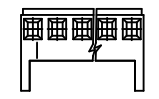
WITH RAMP AND POLARIZING

HOUSING NO. 4455-N2



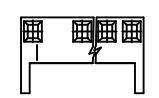
AVAILABLE ON BOTTOM ENTRY APPLICATIONS ONLY

HOUSING NO. 4455-NR



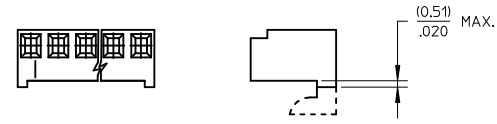
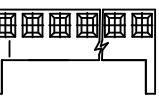
WITH RAMP

HOUSING NO. 4455-N-02

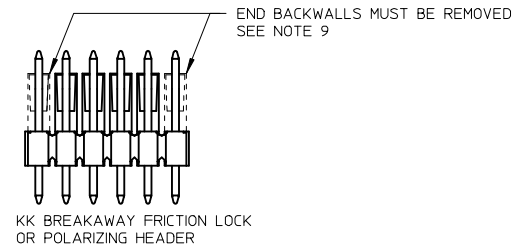


MOLDED VOID IN CKT 2

HOUSING NO. 4455-N



HOOKS CUT OPTION AVAILABLE ON TOP ENTRY. SEE CHART



KK BREAKAWAY FRICTION LOCK OR POLARIZING HEADER

| | |
|-----------|-----|
| 2-* | D14 |
| 1 | D15 |
| SHT. REV. | |

| | | | | | | |
|---|-----------------|--|-----------------|---|--------------|------------------------------------|
| REMOVE OBSOLETE ECC NO: UCP2017-4505 DRWN: BAPPELDORN 2017/01/10 CHKD: HKIPPER 2017/01/10 APPR: F SMITH 2017/03/14 DESCRIPTION REV | QUALITY SYMBOLS | GENERAL TOLERANCES (UNLESS SPECIFIED) | DIMENSION STYLE | SCALE | DESIGN UNITS | THIRD ANGLE PROJECTION |
| | ▽E=0 | 4 PLACES ± --- ± --- | MM/IN | --- | INCH | ☉ |
| | ▽E=0 | 3 PLACES ± --- ± .010 | mm | DRAWN BY | DATE | TITLE |
| | ▽E=0 | 2 PLACES ± 0.25 ± .015 | INCH | SAMIEC | 10/5/84 | KK 100 PCB ASSY 4455 SERIES DWG |
| | | 1 PLACE ± 0.36 ± --- | | CHECKED BY | DATE | |
| | | 0 PLACE ± ± | | PATEL | 10/5/84 | |
| | | | | APPROVED BY | DATE | |
| | | | | LENZ | 10/5/84 | |
| | | ANGULAR ± 1/2° | | MATERIAL NO. | DOCUMENT NO. | |
| | | DRAFT WHERE APPLICABLE MUST REMAIN WITHIN DIMENSIONS | | SEE CHART | SDA-4455 | |
| | | | SIZE B | THIS DRAWING CONTAINS INFORMATION THAT IS PROPRIETARY TO MOLEX INCORPORATED AND SHOULD NOT BE USED WITHOUT WRITTEN PERMISSION | | SHEET NO. 1 OF * |