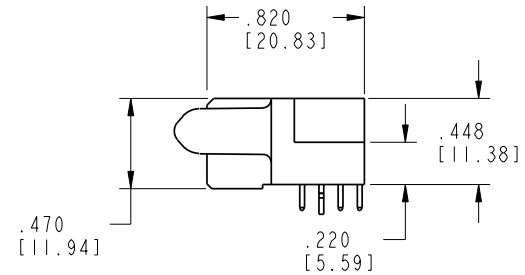
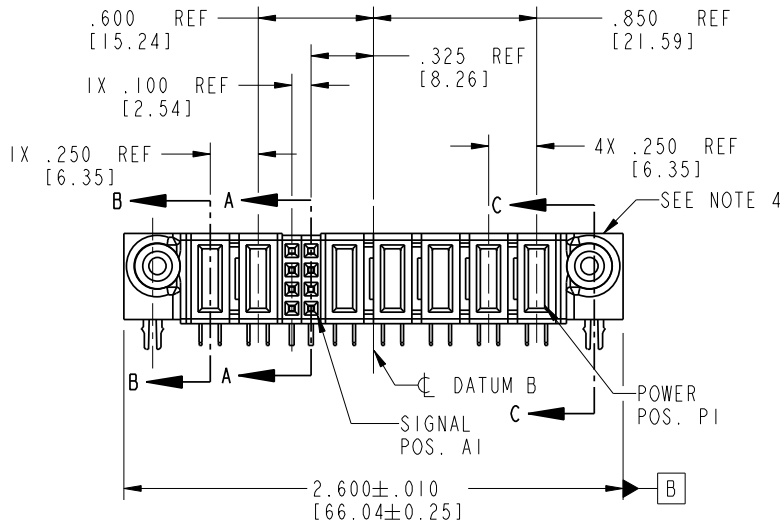


Tous droits strictement réservés. Reproduction ou communication o des liers interdite sous quelque forme que ce soit sans autorisation écrite du propriétaire. Propriété de c FCI. Droits de reproduction FCI.

All rights strictly reserved. Reproduction or issue to third parties in any form whatever is not permitted without written authority from the proprietor. Property of FCI. Copyright FCI.

**FCI**

PRODUCT NO. 51770-008_- NOTE: 3	ROWS DCBA	POWER		SIG		POWER					E1
		E2	P7	P6	2	1	P5	P4	P3	P2	
			PC	PA	HH GG FF EE	PA	PC	PA	PC	PA	



**CONFIDENTIAL**

CODE	DIM "M" MATING LENGTH	CONTACT TYPE
E	N/A [N/A]	SIGNAL
F	N/A [N/A]	SIGNAL
G	N/A [N/A]	SIGNAL
H	N/A [N/A]	SIGNAL
PA	.042 [1.07]	POWER
PC	.092 [2.34]	POWER
HA	N/A [N/A]	HOLD-DOWN

mat'l code SEE NOTE 2				tolerances unless otherwise specified		CUSTOMER	
lir	ecn no.	dr	date	linear	.XX±.01/0.X±0.3	COPY	
A	V21353	TAB	08/21/02		.XXX±.005/0.XX±0.13	projection	
B	DG05-0304	GuoJM	09/14/05	angles	.XXXX±.0020/0.XXX±0.051	INCH/MM	
				dr	0°±2°	scale	
				enrg	T. BRUNGARD 08/21/02	1:1	
				chr	M. MOSTOLLER 08/21/02		
				appd	M. MOSTOLLER 08/21/02		
sheet index	revision sheet	B 1	B 2	B 3	B 4		

product family		PwrBlade	
size	dwg no	code	
A	51770-008	213	
		sheet	
		1 of 4	

title		5P + 8S + 2P	
R/A SOLDER RECEPTACLE			
product family		PwrBlade	
size	dwg no	code	
A	51770-008	213	
		sheet	
		1 of 4	

1 | 2

Pro/E

**PDM: Rev: B**

STAT **US: Released**

Printed: Dec 20, 2010

3 |

4

A

A

B

B

code code 22516

4

Tous droits strictement réservés. Reproduction ou communication o des liers interdite sous quelque forme que ce soit sans autorisation écrite du propriétaire. Propriete de c FCI. Droits de reproduction FCI.

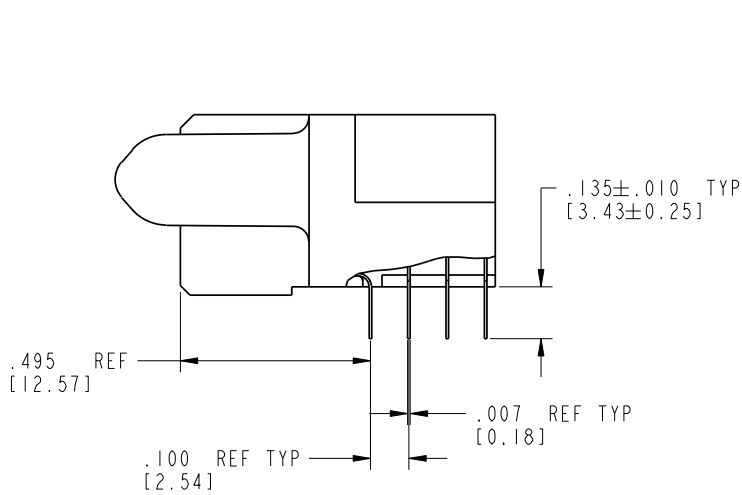
All rights strictly reserved. Reproduction or issue to third parties in any form whatever is not permitted without written authority from the proprietor. Property of FCI. Copyright FCI.

**FCI**

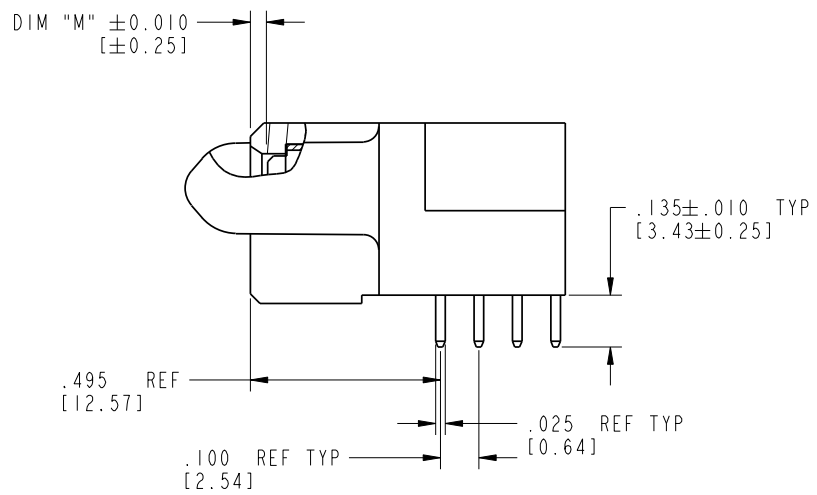
PRODUCT NUMBER

51770-008\_\_

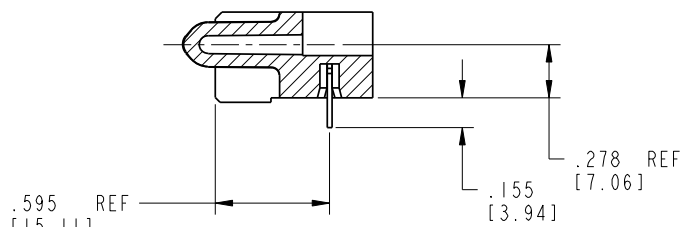
NOTE: 3



BROKEN-OUT SECTION A-A  
SCALE 2:1



BROKEN-OUT SECTION B-B  
SCALE 2:1



SECTION C-C

**CONFIDENTIAL**

mat'l code				SEE NOTE 2		tolerances unless otherwise specified		CUSTOMER		 www.fciconnect.com	
lir	ecn no.	dr	date	linear	.XX±.01/0.X±0.3		COPY		title		
B					.XXY±.005/0.XX±0.13		projection		5P + 8S + 2P		
				angles	.XXX±.0020/0.XXX±0.051				R/A SOLDER RECEPTACLE		
					0°±2°				product family		
				dr	T. BRUNGARD	08/21/02	INCH/MM		PwrBlade		code
				engr	M. MOSTOLLER	08/21/02	scale		size		213
				chr	M. MOSTOLLER	08/21/02	1:1		A		sheet
				appd	M. MOSTOLLER	08/21/02			51770-008		2 of 4
sheet index	revision sheet										

Pro/E

**PDM: Rev: B**

STAT **Released**

Printed: Dec 20, 2010



PRODUCT NUMBER

51770-008\_\_  
NOTE: 3

NOTES:

1. DIMENSIONS AND TOLERANCES ARE IN ACCORDANCE WITH ASME Y14.5M, 1994 UNLESS OTHERWISE SPECIFIED.

CONNECTOR NOTES:

2. HOUSING MATERIAL: UL 94 V-0 GLASS FILLED  
HIGH-TEMP THERMOPLASTIC  
POWER CONTACT MATERIAL: COPPER ALLOY  
SIGNAL PIN MATERIAL: COPPER ALLOY

3. PLATING:  
51770-008 Singal Pin:30u"/0.76um Au OVER 50u"/1.27um Ni ON THE CONTACT AREA,  
AND 100u"/2.54um SnPb PLATING OVER 50u"/1.27um Ni ON THE TERMINATION SECTION.  
Power Pin:30u"/0.76um Au OVER 50u"/1.27um Ni ON THE CONTACT AREA,  
AND 100u"/2.54um SnPb PLATING OVER 50u"/1.27um Ni ON THE TERMINATION SECTION.

51770-008LF Singal Pin:30u"/0.76um Au OVER 50u"/1.27um Ni ON THE CONTACT AREA,  
AND 78u"/2.00um Sn PLATING OVER 50u"/1.27um Ni ON THE TERMINATION SECTION.  
Power Pin:30u"/0.76um Au OVER 50u"/1.27um Ni ON THE CONTACT AREA,  
AND 78u"/2.00um Sn PLATING OVER 50u"/1.27um Ni ON THE TERMINATION SECTION.

PART NUMBER 51770-008LF MEETS EUROPEAN UNION DIRECTIVE AND OTHER COUNTRY REGULATIONS AS DESCRIBED IN GS-22-008.

THE HOUSING WILL WITHSTAND EXPOSURE TO 260° PEAK TEMPERATURE FOR 10 SECONDS IN A WAVE SOLDER APPLICATION WITH A CIRCUIT BOARD.

4. MANUFACTURER'S NAME, P/N, AND DATE CODE TO APPEAR ON THIS SURFACE.

5. PRODUCT SPECIFICATION GS-12-149.  
APPLICATION SPECIFICATION BUS-20-067.

PCB NOTES:

6. ALL HOLE DIAMETERS ARE FINISHED HOLE SIZE.

7. MOUNTING HOLES, WHERE APPLICABLE, ARE UNPLATED.

8.  $\varnothing .0453 \pm .0010$  [1.151  $\pm$  0.025] DRILLED HOLES PLATED WITH .0003 [0.008] MIN SnPb OVER .001 [0.03] TO .003 [0.08] Cu PLATING TO ACHIEVE  $\varnothing .040 \pm .003$  [1.02  $\pm$  .07] HOLE.

9. "DIM XXX" TO BE DETERMINED BY THE CUSTOMER.

10. CONNECTOR KEEP-OUT ZONE.

CONFIDENTIAL

mot'l code				SEE NOTE 2		tolerances unless otherwise specified		CUSTOMER		A FCI www.fciconnect.com		
lir	ecr no.	dr	date	linear	.XX±.01/0.X±0.3		COPY		title			
B					.XXX±.005/0.XX±0.13		projection		5P + 8S + 2P			
				angles	.XXX±.0020/0.XXX±0.051		INCH/MM		R/A SOLDER RECEPTACLE			
					$0^\circ \pm 2^\circ$		scale		product family		code	
				dr	T. BRUNGARD	08/21/02	1:1		PwrBlade		213	
				engr	M. MOSTOLLER	08/21/02	A		size		sheet	
				chr	M. MOSTOLLER	08/21/02	51770-008		dwg no		4 of 4	
				appd	M. MOSTOLLER	08/21/02						
sheet index		revision sheet										

Tous droits strictement reserves. Reproduction ou communication a des tiers interdite sous quelque forme que ce soit sans autorisation ecrite du proprietaire. Propriete de c FCI. Droits de reproduction FCI.

FCI

All rights strictly reserved. Reproduction or issue to third parties in any form whatever is not permitted without written authority from the proprietor. Property of FCI. Copyright FCI.

A

A

B

B