

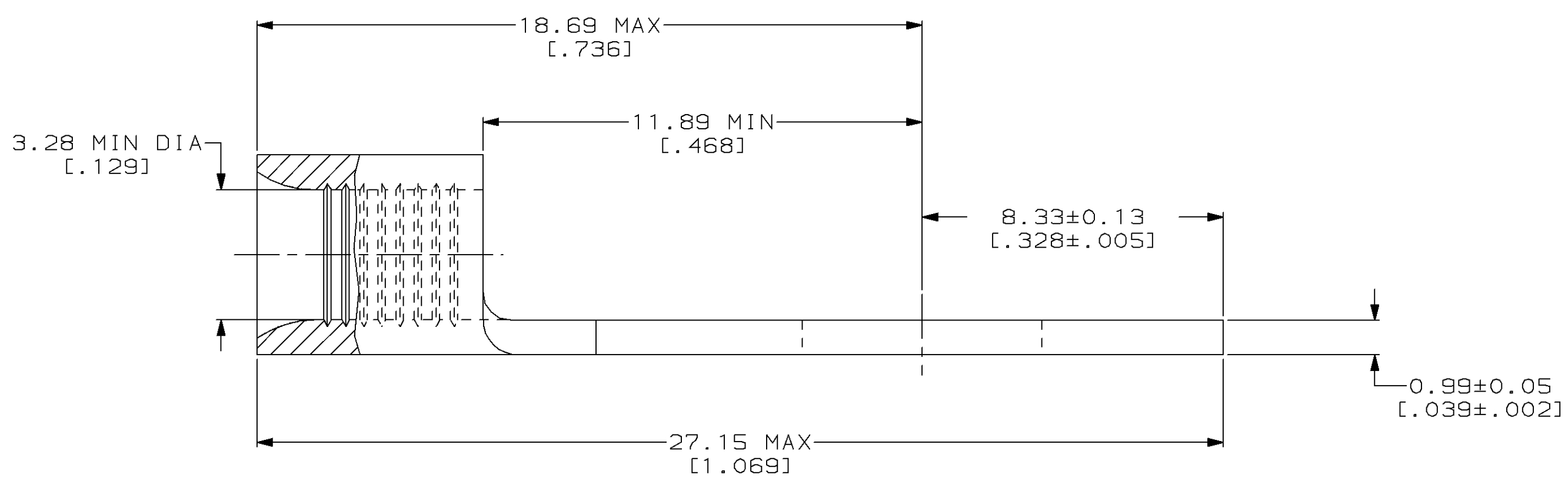
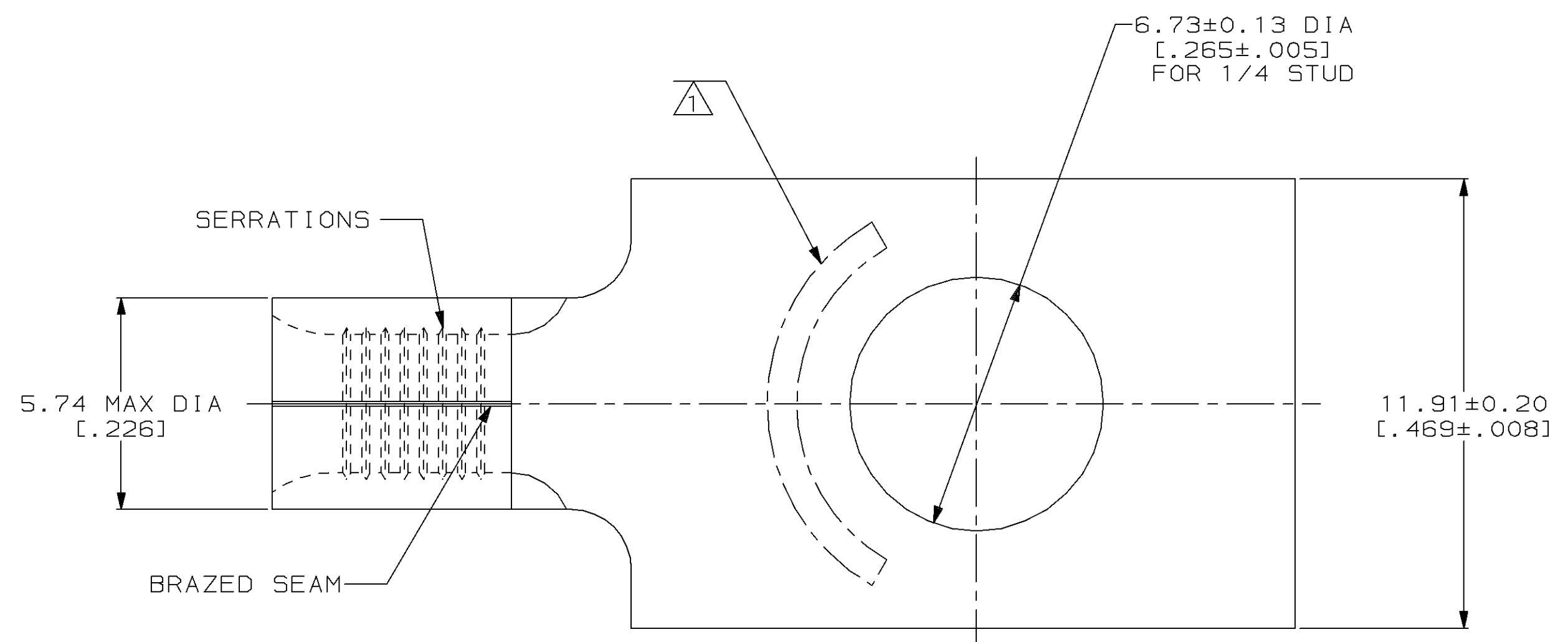
THIS DRAWING IS UNPUBLISHED. RELEASED FOR PUBLICATION ,19 .  
 © COPYRIGHT 19 BY AMP INCORPORATED. ALL INTERNATIONAL RIGHTS RESERVED.

| LOC | DIST | P | F | ZONE | LTR | DESCRIPTION                    | DATE    | APPD    |
|-----|------|---|---|------|-----|--------------------------------|---------|---------|
| G   | 14   |   |   |      |     | REV & REDRAWN PER 0720-0040-93 | 3-26-93 | APP DAP |

**METRIC**  
 DIMENSIONS LISTED IN mm [ INCHES ]

|                                |                            |
|--------------------------------|----------------------------|
| <b>AMP</b><br>WIRE RANGE       | <b>UL</b> E13288<br>Listed |
| 12-10 AWG<br>SOLID OR STRANDED | 12-10 AWG<br>STRANDED      |
| <b>SR</b> LR7189<br>Certified  | MILITARY P/N<br>AND CLASS  |
| 12-10 AWG<br>SOLID OR STRANDED | NOT APPLICABLE             |

△ STAMP AMP 12-10\* APPROX AS SHOWN



|  |  |   |  |                             |  |                        |
|--|--|---|--|-----------------------------|--|------------------------|
| AMP INCORPORATED<br>CUSTOMER SERVICE SYSTEMS                                     |  | MAX RECOMMENDED OPERATING TEMPERATURE:<br>170°C MAX   | DO NOT SCALE PRINT.<br>UNLESS SPECIFIED<br>DIMENSIONS IN mm [INCHES]<br>TOLERANCES ON:<br>2 PLC DEC ± -<br>3 PLC DEC ± -<br>ANGLES ± - | DR 3-26-93<br>TA BRINKMAN   | 320823<br>PART NO                                    |                        |
| FOR ADDITIONAL PRODUCT INFORMATION OR COPIES OF DRAWINGS AND TECHNICAL DOCUMENTS | PRODUCT INFORMATION CENTER<br>1-800-522-6752 | VOLTAGE RATING:<br>NOT APPLICABLE   | MATERIAL<br>COPPER PER ASTM B-152<br>ANNEALED  | CHK 3-26-93<br>DA PATTERSON | AMP AMP Incorporated<br>Harrisburg, PA 17105-3608    |                        |
| FOR APPLICATION TOOLING INFORMATION  | TOOLING ASSISTANCE CENTER<br>1-800-722-1111  | WIRE CROSS SECTIONAL AREA RANGE:<br>2.62-6.64mm <sup>2</sup> [5,180-13,100] CIR MILS<br>SOLID OR STRANDED   | FINISH<br>TIN PLATE<br>0.00254 [0.00100] MIN<br>THK PER MIL-T-10727  | APPD 3-26-93<br>DE MILLER   | NAME<br>TERMINAL, RECTANGULAR<br>TONGUE, SOLISTRAND™ |                        |
| FOR ORDER ENTRY  | 1-800-526-5142                               | THIS DRAWING IS A CONTROLLED DOCUMENT FOR AMP INCORPORATED. IT IS SUBJECT TO CHANGE AND THE CONTROLLING ENGINEERING ORGANIZATION SHOULD BE CONTACTED FOR THE LATEST REVISION. |  | APPD 3-26-93<br>JL MECKLEY  | SIZE<br>③ 00779                                      | DRAWING NO<br>③=320823 |
| AMP 1471-6 REV 3-92  |  |   |  | PRODUCT SPEC<br>-           | SCALE 8:1  | SHEET 1 OF 1           |

CUSTOMER DRAWING