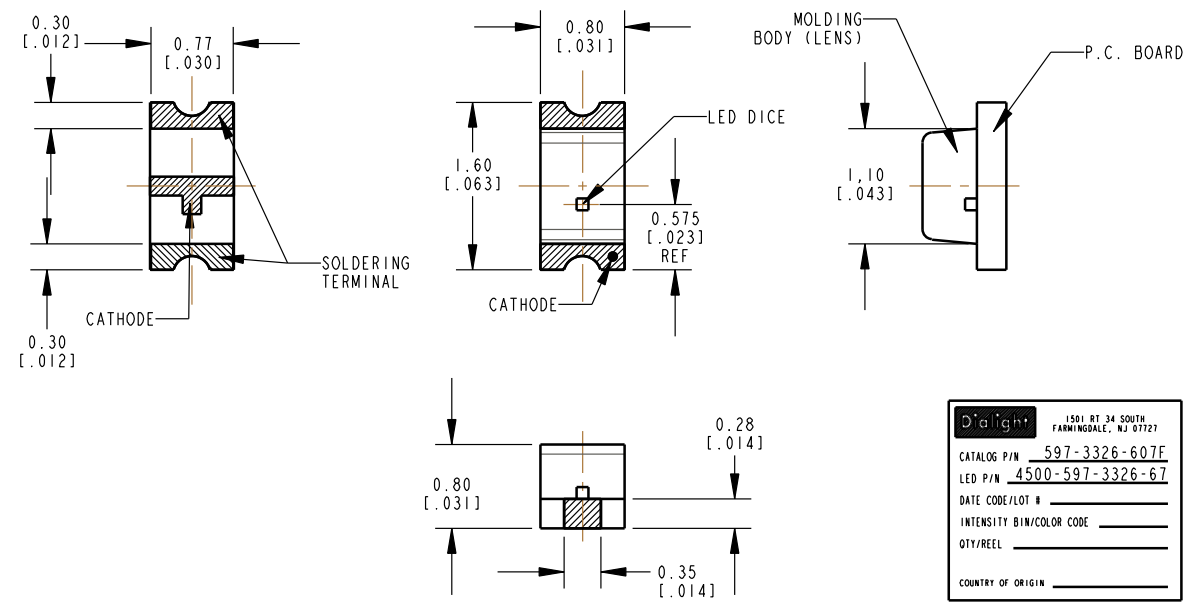


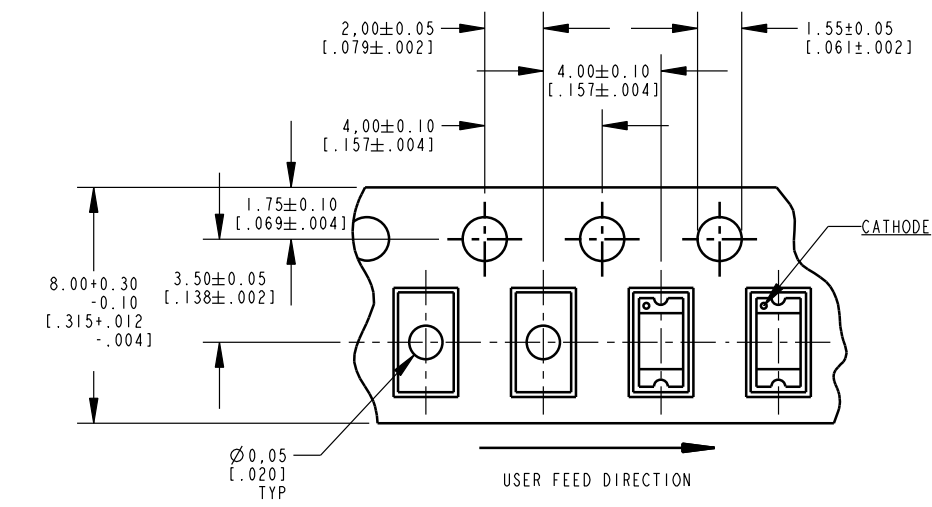
REV	ECN NO	REVISIONS	DRN	CKD	APP	DATE
A		NEW RELEASE	TWC			



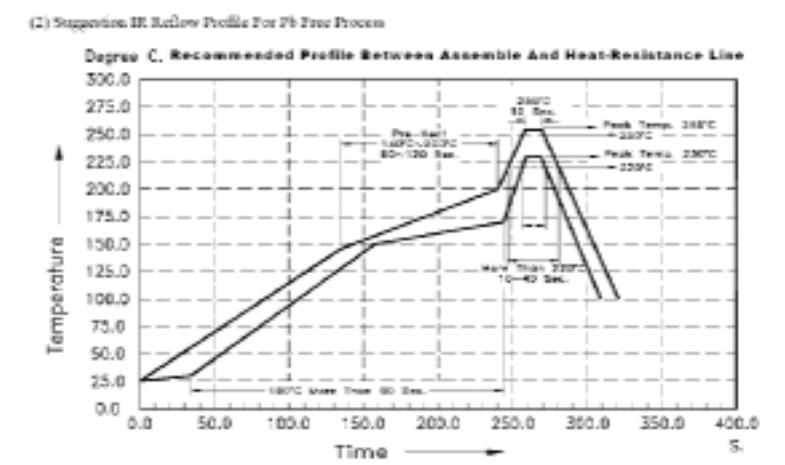
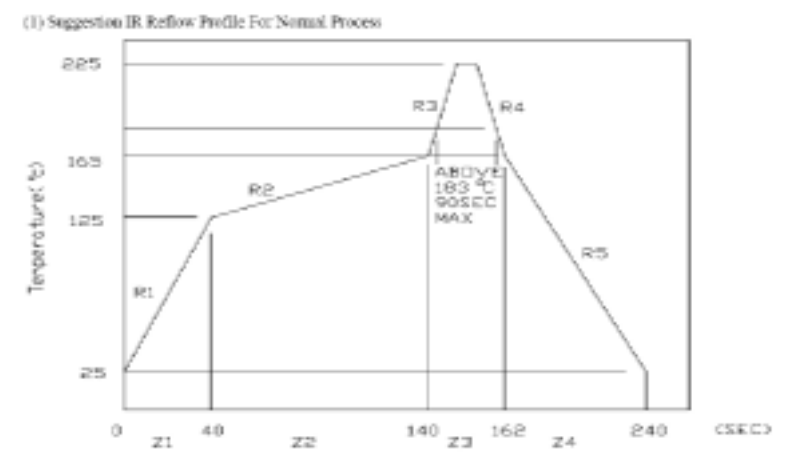
- NOTES:
- EPOXY COLOR: WATER CLEAR.
  - DIE: InGaN GREEN
  - LEADS: Au (GOLD) PLATED, OVER Ni (NICKEL) ON Cu (COPPER ALLOY) ON A FR4 SUBSTRATE.
  - SOLDER ADHERANCE: BOTH LEADS PER MIL-STD-202E, METHOD 208C.
  - PART TAPED AND REELED PER EIA-RS-481-1.
  - PART SUPPLIED 3000 DEVICES PER 7" DIAMETER REEL, ONE REEL PER SEALED ALUMINUM BAG WITH DESICCANT.
  - LABELING FOR REEL AND OUTSIDE OF ALUMINUM FOIL BAG: DIALIGHT P/N, DATE CODE/LOT NUMBER, INTENSITY BIN CODE/COLOR CODE QUANTITY PER REEL & COUNTRY OF ORIGIN.
  - THIS COMPONENT IS AN ELECTROSTATIC DISCHARGE SENSITIVE DEVICE (ESD). MAINTAIN ALL PRECAUTIONARY MEASURES DURING ASSEMBLY, HANDLING AND STORAGE IN ACCORDANCE WITH IPC-A-610.
  - DIALIGHT P/N: 597-3326-607F FULL REEL OR -602F 20 PIECE SAMPLE STRIP.
  - TAPE AND REEL LEDS MAY REQUIRE RE-TAPING AFTER TWELVE MONTHS.
  - THIS PRODUCT IS Pb FREE. IT IS IN COMPLIANCE WITH THE EUROPEAN UNION'S ROHS DIRECTIVE. EACH REEL AND BAG IS MARKED WITH THE Pb FREE LABEL P/N 9100-117-0852-99 OR EQUIVALENT

**Dialight**  
 1501 RT 34 SOUTH  
 FARMINGDALE, NJ 07727  
 CATALOG P/N 597-3326-607F  
 LED P/N 4500-597-3326-67  
 DATE CODE/LOT # \_\_\_\_\_  
 INTENSITY BIN/COLOR CODE \_\_\_\_\_  
 QTY/REEL \_\_\_\_\_  
 COUNTRY OF ORIGIN \_\_\_\_\_

FIGURE (1)



PACKAGE DIMENSIONS OF TAPE AND REEL

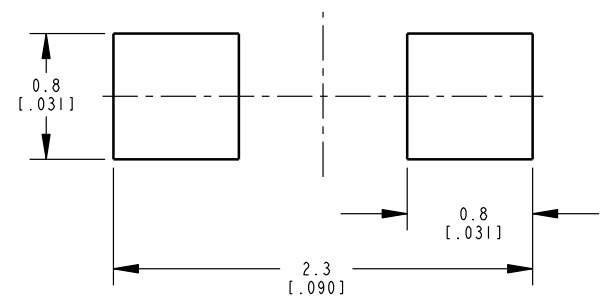


ABSOLUTE MAXIMUM RATINGS AT 25° C AMBIENT

	GREEN	UNITS
POWER DISSIPATION	76	mW
DERATE LINEARLY FROM 50° C	0.25	mA/°C
CONTINUOUS FORWARD CURRENT	20	mA
PEAK FORWARD CURRENT (1/10 DUTY CYCLE, 0.1 ms PULSE WIDTH)	100	mA
REVERSE VOLTAGE	5	V
OPERATING TEMPERATURE	-20 TO +80	°C
STORAGE TEMPERATURE	-30 TO +100	°C
WAVE SOLDERING CONDITION	260° C FOR 5 SEC	
INFRARED SOLDERING CONDITION	260° C FOR 5 SEC	
VAPOR PHASE SOLDERING CONDITION	215° C FOR 3 MIN	

OPERATING CHARACTERISTICS AT 25° C AMBIENT

LED CHARACTERISTICS	MIN.	TYP.	MAX.	UNITS	TEST CONDITIONS
LUMINOUS INTENSITY (I <sub>v</sub> )	90.0	150.0	280.0	mcd	I <sub>F</sub> = 20 mA
VIEWING ANGLE (2θ @ 1/2)		130		DEGREES	
PEAK WAVELENGTH (λ <sub>p</sub> )		530		nm	MEASUREMENT @ PEAK
DOMINANT WAVELENGTH (λ <sub>d</sub> )	520.0	525.0	530.0	nm	I <sub>F</sub> = 20 mA
SPECTRAL LINE HALF-WIDTH (Δλ)		35		nm	
FORWARD VOLTAGE (V <sub>F</sub> )		3.40	3.80	V	I <sub>F</sub> = 20 mA
REVERSE CURRENT (I <sub>R</sub> )			10	μA	V <sub>R</sub> = 5V



SUGGEST SOLDERING PAD DIMENSIONS



THIS DRAWING AND THE CONTENTS HEREIN ARE CONFIDENTIAL AND THE SOLE PROPERTY OF DIALIGHT. REPRODUCTION OF THIS DRAWING OR CONSTRUCTION OF ANY PARTS WITHIN THIS DRAWING ARE FORBIDDEN WITHOUT THE WRITTEN CONSENT OF DIALIGHT.

SCALE: 20.000  
 ALL DIM'S IN: MM (INCHES)

TOLERANCES: UNLESS OTHERWISE SPECIFIED  
 FRACTIONS: ±1/64  
 DECIMALS (.XX): ±.01  
 DECIMALS (.XXX): ±.005  
 DECIMALS (.XXXX): ±.0005  
 ANGLES: ±1°

FINISH:

FSCM 83330

DRAWING NUMBER: C-17230  
 REV: A

TITLE: SMT 0603 InGaN GREEN LED  
 MATERIAL:

**Dialight**  
 1501 ROUTE 34 SOUTH  
 FARMINGDALE, NJ 07727

SHEET 1 OF 1 FAMILY TABLE: