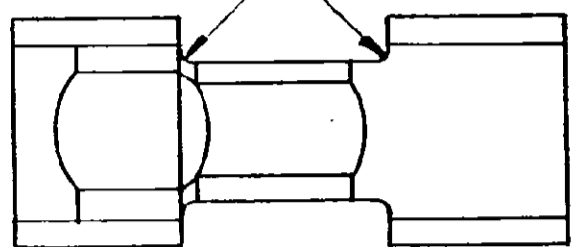


NUMBER 576131

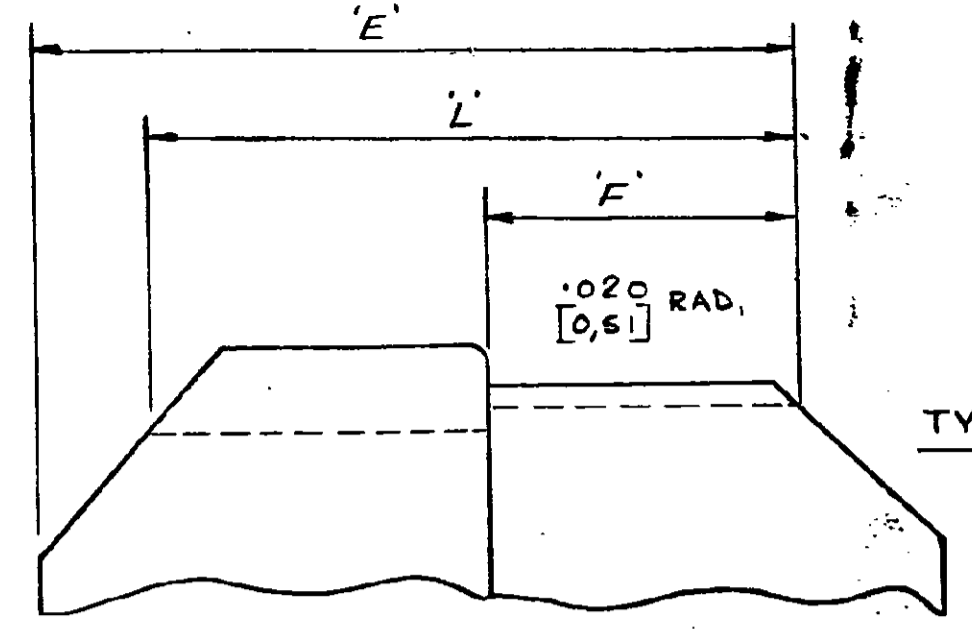
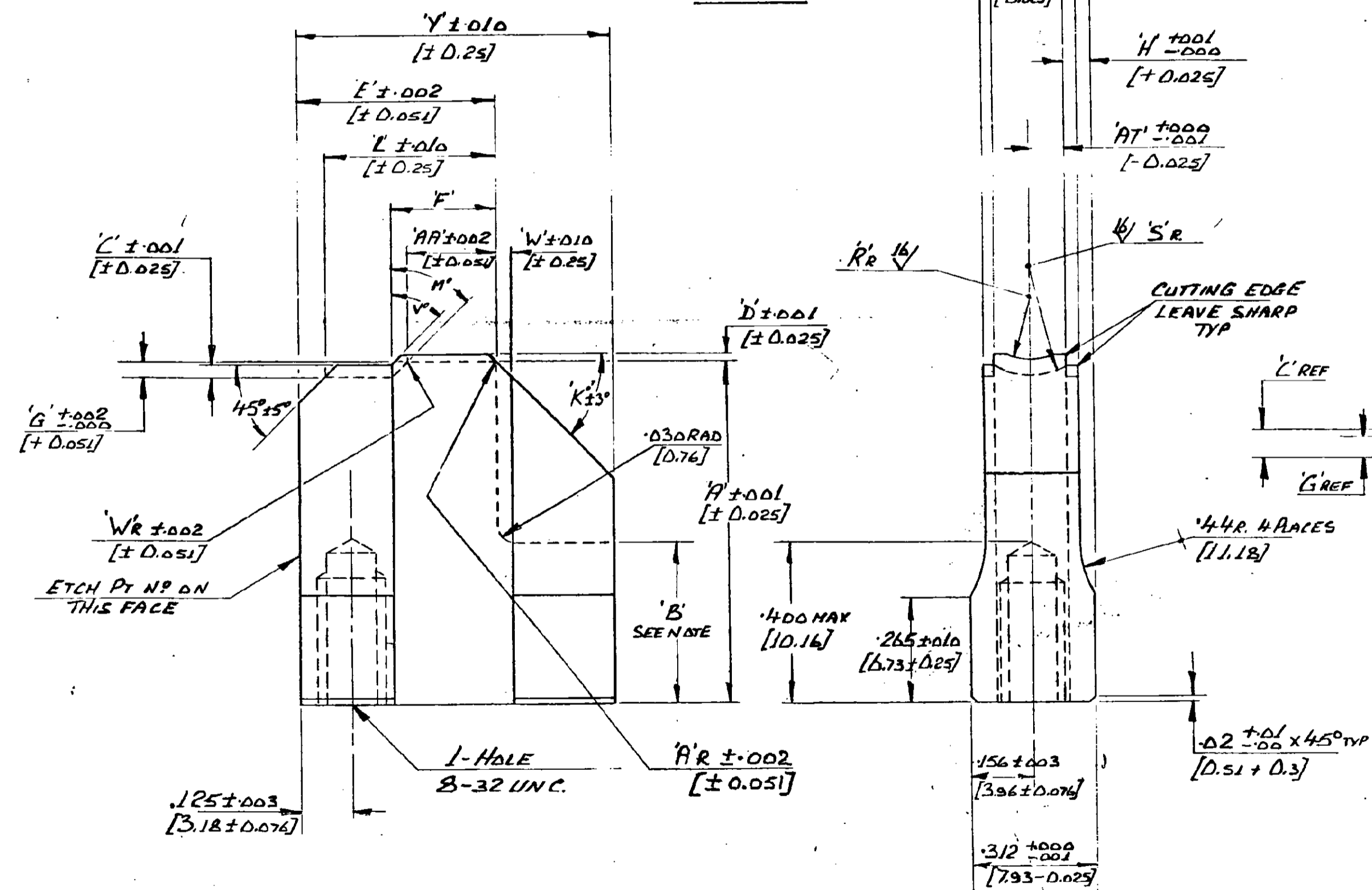
3RD ANGLE (AMERICAN) PROJECTION

DIMENSIONS IN FIGURES DO NOT SCALE PRINT DIMENSIONS TRUS IN INCH

.010 RADS  $\pm .005$  TYP  
[D.25 + 0.127]



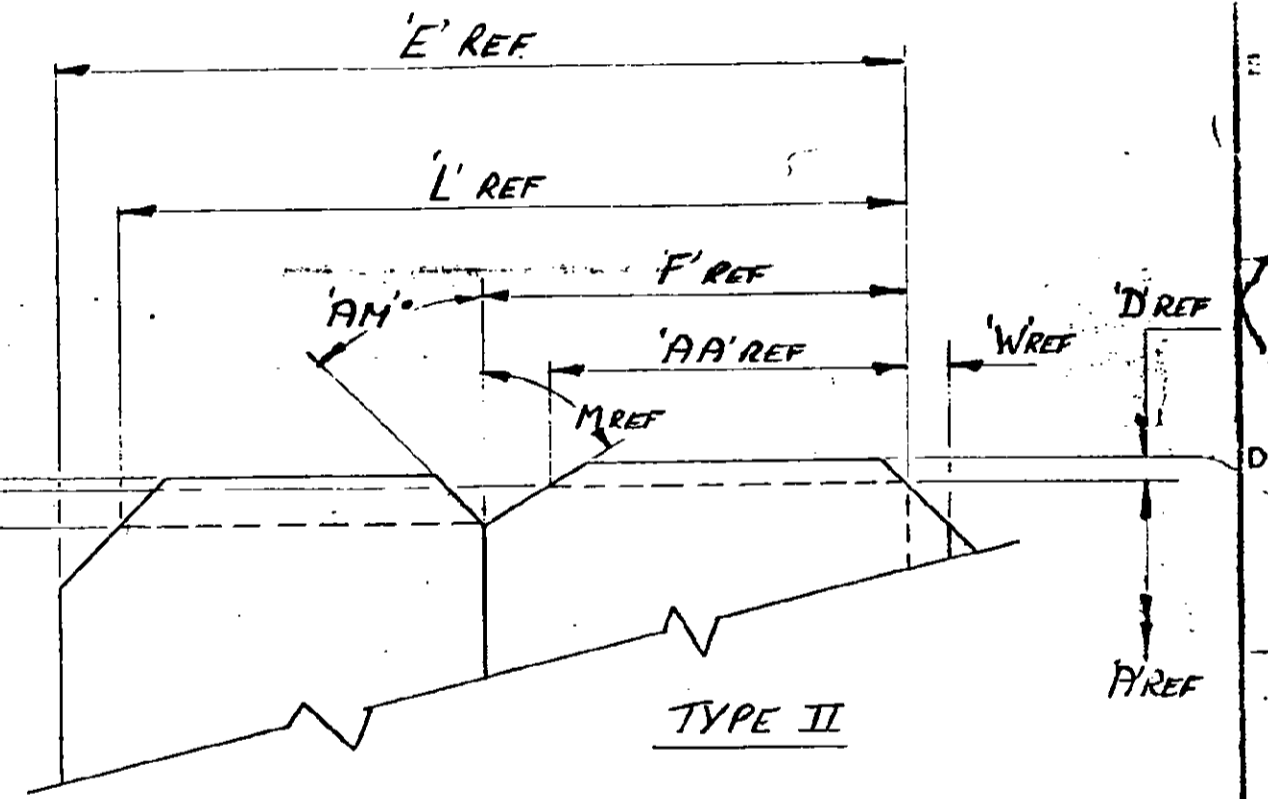
TYPE I



TYPE III

NOTES

- 1) FINISH GRIND AFTER HEAT TREAT
- 2) WHEN DIM B IS USED, PART TO BE CUT OUT ALONG DOTTED LINE AS SHOWN.



TYPE II

SHEET 1 OF 5

This information is confidential and is disclosed to you on condition that you will not use it for any purpose other than that for which it is furnished. If you are a contractor, you will not use it for any purpose other than that for which it is furnished. AIRCRAFT-MARINE PRODUCTS (GREAT BRITAIN) LTD.

100-43	R.P. 51-56	112-157	32J
MATERIAL		HEAT TREAT III-U.S.	
100-43		112-157	
REMOVE BURRS, BREAK SHARP EDGES .015 [0.38] R. MAX.		ANGLES: ± 0° 30'	
UNLESS OTHERWISE SPECIFIED		.0005 ± .0005 [0.013]	
FIRST USED		WIRE RANGE	
CLASS		TYPE	
SCALE		NTS	
AIRCRAFT-MARINE PRODUCTS (GREAT BRITAIN) LTD. STAMFORD, ENGLAND		AMP industrial	
A DIVISION OF		LOC E C No. 576131 SHY 1 OF 5 1BZ	
NAME		COMB ANIP	
DATE		MINI APPLICATOR	
REVISION RECORD			
REV	BY	DATE	DESCRIPTION
1-4	ADDED		
5-6	ADDED		
7-8	ADDED		
9-10	ADDED		
11-12	ADDED		
13-14	ADDED		
15-16	ADDED		
17-18	ADDED		
19-20	ADDED		
21-22	ADDED		
23-24	ADDED		
25-26	ADDED		
27-28	ADDED		
29-30	ADDED		
31-32	ADDED		
33-34	ADDED		
35-36	ADDED		
37-38	ADDED		
39-40	ADDED		
41-42	ADDED		
43-44	ADDED		
45-46	ADDED		
47-48	ADDED		
49-50	ADDED		
51-52	ADDED		
53-54	ADDED		
55-56	ADDED		
57-58	ADDED		
59-60	ADDED		
61-62	ADDED		
63-64	ADDED		
65-66	ADDED		
67-68	ADDED		
69-70	ADDED		
71-72	ADDED		
73-74	ADDED		
75-76	ADDED		
77-78	ADDED		
79-80	ADDED		
81-82	ADDED		
83-84	ADDED		
85-86	ADDED		
87-88	ADDED		
89-90	ADDED		
91-92	ADDED		
93-94	ADDED		
95-96	ADDED		
97-98	ADDED		
99-100	ADDED		

576131

This information is confidential and is disclosed to you on the basis of a disclosure made by you to other than AMP Personnel with the exception of those persons who are authorized to receive such information from AMP AIRCRAFT MARINE PRODUCTS (GREAT BRITAIN) LTD.

PART NO	T	N	AT	AA	F	L	E	Y	G	M	V	WR	C	SR	D	R	J	H	W	A	K	B	AM	AR	DATE	FIRST USED	DR	CL	TYPE
576131-1	INS=0.55 H/H=1.4	0.96	0.275	1.20	1.37	2.50	4.78	5.93	0.10	60°	-	-	0.028	0.090	0.002	0.090	1.08	1.29	0.63	0.20	45°	-	30°	#	-	576012			II
576131-2	INS=1.20 H/H=3.04	1.76	0.60	1.25	1.45	3.43	4.68	5.93	0.20	45°	-	-	0.20	1.87	0.10	1.25	0.68	0.96	0.63	0.20	45°	-	45°	#	10-4-69	576015			II
576131-3	0.62	0.76	0.31	1.25	1.35	2.80	4.68	5.93	0.10	45°	-	-	0.05	0.90	-	-	1.18	1.25	0.63	0.20	45°	-	45°	#	16-5-69	576019			II
576131-4	0.90	1.16	0.45	1.64	1.84	3.12	4.68	5.93	0.20	45°	-	-	0.13	0.90	0.06	0.90	0.98	1.11	0.63	0.20	45°	-	45°	#	-	576025			II
576131-5	0.51	0.51	0.255	1.15	1.25	2.80	4.68	5.93	0.10	45°	-	-	-	-	-	-	1.30	1.30	0.63	0.20	45°	-	-	#	-	576026			I
576131-6	1.50	2.46	0.90	2.00	2.20	4.40	4.78	5.93	0.20	45°	-	-	0.20	1.87	0.19	1.87	0.33	0.66	0.63	0.10	45°	-	45°	#	-	576037			II
576131-7	1.40	2.06	0.70	1.90	2.20	4.40	4.68	5.93	0.20	45°	-	-	0.22	1.56	0.11	1.87	0.53	0.66	0.20	0.20	45°	-	45°	#	-	576037			II
576131-8	0.62	0.96	0.31	1.25	1.37	2.80	4.68	5.93	0.12	45°	-	-	0.08	0.90	-	-	1.08	1.25	0.63	0.20	45°	-	45°	#	-	576046			II
576131-9	0.80	1.06	0.40	1.25	1.41	2.80	4.68	5.93	0.16	45°	-	-	0.13	0.90	0.06	0.90	1.03	1.16	0.63	0.20	45°	-	45°	#	-	576047			II
1-576131-0	0.90	1.00	0.45	1.35	1.52	3.00	4.68	5.93	0.18	45°	-	-	0.20	0.50	0.07	0.90	1.06	1.11	-	0.20	45°	-	-	#	-	576018			I
1-576131-1	1.20	2.46	0.60	1.55	1.95	4.22	4.68	5.93	0.50	39°	-	-	0.22	3.00	0.10	1.25	0.33	0.96	0.63	0.20	60°	-	51°	#	-	-	-	II	
1-576131-2	0.80	1.26	0.40	1.25	1.37	4.08	4.68	5.93	0.12	45°	-	-	0.11	1.25	0.06	0.90	0.93	1.16	0.30	0.20	45°	-	45°	#	-	576091			II
1-576131-3	0.70	1.16	0.35	1.25	1.39	2.80	4.68	5.93	0.14	45°	-	-	0.10	1.25	0.03	0.90	0.98	1.21	0.30	0.20	45°	-	45°	#	-	576096			II
1-576131-4	1.00	1.51	0.50	2.18	2.70	4.68	4.68	5.93	0.45	49°	NOT REQD	NOT REQD	0.13	1.87	0.07	1.25	0.80	1.06	0.63	0.20	45°	NOT REQD	30°	#	18-9-73	576519			II
1-576131-5	0.80	1.51	0.40	1.70	1.70	3.50	4.68	5.93	0.10	NOT REQD	NOT REQD	NOT REQD	0.39	0.77	0.06	0.90	0.80	1.16	0.30	0.20	45°	NOT REQD	NOT REQD	#	-	576500 & 576500-1			III
1-576131-6	1.55	2.06	0.75	1.93	2.45	3.90	3.90	7.50	0.50	60°	NOT REQD	NOT REQD	0.25	1.25	0.13	1.87	0.53	0.78	0.50	0.20	45°	NOT REQD	30°	#	-	576519-1			II
1-576131-7	0.80	1.06	0.40	1.40	1.57	3.05	4.78	5.70	0.10	60°	NOT REQD	NOT REQD	0.23	0.55	0.06	0.90	1.03	1.16	0.25	0.20	45°	NOT REQD	30°	#	-	576032			II
1-576131-8	1.20	1.66	0.60	2.18	2.70	4.68	4.68	5.93	0.30	60°	NOT REQD	NOT REQD	0.17	1.87	0.11	1.25	0.73	0.96	0.63	0.20	45°	NOT REQD	30°	#	-	576519			II
1-576131-9	1.00	2.06	0.50	1.25	1.45	3.43	4.68	5.93	0.20	45°	NOT REQD	NOT REQD	0.20	2.50	0.07	1.25	0.53	1.06	0.63	0.20	45°	NOT REQD	30°	#	-	576015-2			II
2-576131-0	0.90	1.16	0.45	1.40	1.57	3.05	4.78	5.70	0.10	60°	NOT REQD	NOT REQD	0.17	0.45	0.08	0.90	0.98	1.11	0.25	0.20	45°	NOT REQD	30°	#	-	576032-2			II
2-576131-1	0.90	1.76	0.45	1.10	1.45	3.12	4.68	5.93	0.20	60°	NOT REQD	NOT REQD	0.19	1.87	0.07	0.90	0.68	1.11	0.63	0.20	45°	NOT REQD	30°	#	-	576549			II
2-576131-2	1.10	2.06	0.55	1.70	2.10	3.50	4.80	5.93	0.20	60°	NOT REQD	NOT REQD	0.20	2.50	0.09	1.25	0.53	1.01	0.35	0.20	45°	NOT REQD	30°	#	-	576533-4 576533-5			II
2-576131-3	0.80	1.40	0.40	1.70	2.10	3.50	4.80	5.93	0.20	60°	NOT REQD	NOT REQD	0.29	0.71	0.06	0.90	0.86	1.16	0.35	0.20	45°	NOT REQD	30°	#	-	576533-6 576533-7			II
2-576131-4	0.80	1.30	0.40	1.25	1.45	3.43	4.68	5.93	0.20	45°	NOT REQD	NOT REQD	0.11	1.25	0.06	0.90	0.91	1.16	0.63	0.20	45°	-	45°	#	-	576015-3			II
2-576131-5	1.40	2.50	0.70	1.85	2.55	4.25	4.70	5.93	0.70	45°	NOT REQD	NOT REQD	0.24	3.00	0.11	1.87	0.31	0.86	0.25	0.20	45°	NOT REQD	45°	#	6-2-80	576566			II
2-576131-6	0.90	0.96	0.45	1.25	1.45	3.43	4.68	5.93	0.20	45°	NOT REQD	NOT REQD	0.07	1.25	0.08	0.90	1.08	1.11	0.63	0.20	45°	NOT REQD	45°	#	9-3-82	576009-1			II
2-576131-7	1.40	2.50	0.70	1.50	2.00	4.25	4.70	5.93	0.20	45°	NOT REQD	NOT REQD	0.24	3.00	0.11	1.87	0.31	0.86	0.25	0.20	45°	NOT REQD	NOT REQD	#	19-12-83	1-576009-2			II

DIMENSIONS IN INCHES. DO NOT SCALE PRINT EXPANSIONS THUS [ ] IN MM.

SHEET 2 OF 5

SEE SHEET 1

MATERIAL	HEAT TREAT	FINISH
SEE SHT 1	SEE SHT 1	SEE SHT 1
UNLESS OTHERWISE SPECIFIED	REMOVE BURRS, BREAK SHARP EDGES 0.1 [0.2] R. MAX.	0.000 - 0.001 [0.01] ANGLES: ± 0.2°
FIRST USED	WIRE RANGE	CLASS
AREA	AMP Industrial	
DATE	1/1/82	
LOC	C	
NAME	576131 SHT 2 OF 5	
	COMB ANVIL	

PRINT DIST. +  
 A  
 B  
 C  
 D  
 E  
 F  
 G  
 NUMBER 576131  
 This information is confidential and is disclosed to you on condition that no further disclosure is made by you to other than AMP Personnel without written authorization from AMP OF GREAT BRITAIN LTD.

8 7 6 5 4 3 2 1

PART N°	T	N	AT	AA	F	L	E	Y	G	M°	V°	Wr	C	Sr	D	Rr	J	H	W	A	K°	B	AM°	AR	DATE	FIRST USED	DR CK	TYPE
2-576131-8	INS MM	.140 3.55	.250 6.35	.070 1.78	.182 4.62	.219 5.56	.377 9.57	.462 11.73	.593 15.06	.020 0.51	60°	≤	.024 0.61	.300 7.62	.011 0.28	.187 4.75	.031 0.79	.086 2.18	.037 0.94	.829 21.06	45°	≤	45°	—	6-3-85	576047-2	S.T.	II
2-576131-9	INS MM	.080 2.03	.160 4.06	.040 1.02	—	.177 4.49	.287 7.29	.468 11.89	.593 15.06	—	—	—	.014 0.35	.187 4.75	.006 0.15	.090 2.29	.076 1.93	.116 2.95	.020 0.51	.829 21.05	45°	—	—	—	18-4-85	576590	S.T.	III
3-576131-0	INS MM	.080 2.03	.180 4.57	.040 1.02	—	.191 4.85	.296 7.52	.464 12.29	.593 15.06	—	—	—	.019 0.48	.187 4.75	.006 0.15	.090 2.29	.066 1.68	.116 2.95	—	.829 21.06	45°	—	—	—	8-8-85	576017-8	R/L	III
3-576131-1	INS MM	.090 2.29	—	.045 1.14	—	—	.200 5.08	.479 12.17	.489 12.42	—	—	—	—	—	.016 0.41	.045 1.14	—	.111 2.82	—	.829 21.05	45°	—	—	—	13-8-85	576441	S.T.	N/A
3-576131-2	INS MM	.080 2.03	—	.040 1.02	—	—	.130 3.30	.468 11.89	.593 12.70	—	—	—	—	—	.006 0.15	.090 2.29	—	.116 2.95	—	.829 21.06	45°	—	—	—	18-10-85	576062-4	S.T.	N/A
3-576131-3	INS MM	.190 4.83	.240 6.10	.095 2.41	.178 4.52	.230 5.84	.485 12.32	.700 17.78	.023 0.58	60°	—	—	.025 0.64	.240 6.10	.021 0.53	.187 4.75	.036 0.91	.061 1.55	.061 1.55	.829 21.06	45°	—	30°	—	4-11-86	576038-6	S.T.	II
3-576131-4	INS MM	.070 1.78	.110 2.79	.035 0.89	.163 4.14	.180 4.57	.350 8.89	.480 12.19	.593 15.06	.010 0.25	60°	—	.009 0.23	.125 3.18	.004 0.10	.090 2.29	.101 2.57	.121 3.07	.025 0.69	.829 21.06	45°	—	30°	—	4-11-86	1-576533-3	S.T.	II
3-576131-5	INS MM	.110 2.79	.130 3.30	.055 1.40	.192 4.88	.207 5.26	.375 9.53	.468 11.89	.593 15.06	.015 0.38	45°	—	.024 0.61	.065 1.65	.009 0.23	.125 3.18	.091 2.31	.101 2.57	.063 1.60	.829 21.06	45°	—	30°	—	4-11-86	1-576017-9	S.T.	II
3-576131-6	INS MM	.090 2.29	.130 3.30	.045 1.14	—	.165 4.19	.363 9.22	.488 12.40	.593 15.06	—	—	—	.008 0.20	.125 3.18	.008 0.20	.090 2.29	.091 2.31	.111 2.82	.020 0.51	.829 21.06	45°	—	—	—	4-11-86	576009-3	S.T.	III
3-576131-7	INS MM	.120 3.05	.165 4.19	.060 1.52	.178 4.52	.210 5.33	.375 9.53	.468 11.89	.593 15.06	.032 0.81	45°	—	.005 0.13	.187 4.75	.011 0.28	.125 3.18	.074 1.88	.096 2.44	.040 1.02	.829 21.06	45°	—	45°	—	3-7-87	2-576017-4	S.T.	II
3-576131-8	INS MM	.090 2.29	.110 2.79	.045 1.14	.135 3.43	.152 3.86	.300 7.62	.488 12.40	.593 15.06	.018 0.46	45°	—	.011 0.28	.125 3.18	.008 0.20	.090 2.29	.101 2.57	.111 2.82	—	.829 21.06	45°	—	—	—	8-9-87	576018-5	S.T.	I
3-576131-9	INS MM	.120 3.05	.165 4.19	.060 1.52	.178 4.52	.210 5.33	.375 9.53	.468 11.89	.593 15.06	.032 0.81	45°	—	.005 0.13	.187 4.75	.011 0.28	.125 3.18	.074 1.88	.096 2.44	.040 1.02	.829 21.06	45°	—	45°	—	21-11-89	4-576017-5	S.T.	II
4-576131-0	INS MM	.090 2.29	.110 2.79	.045 1.14	.110 2.79	.145 3.68	.312 7.92	.468 11.89	.593 15.06	.020 0.51	60°	—	.023 0.58	.055 1.40	.007 0.18	.090 2.29	.101 2.57	.111 2.82	.063 1.60	.809 20.55	45°	—	45°	—	11-10-88	576527-5	S.T.	II
4-576131-1	INS MM	.110 2.79	.120 3.05	.055 1.40	—	.174 4.42	.375 9.53	.468 11.89	.593 15.06	—	45°	—	.017 0.43	.081 2.06	.009 0.23	.125 3.18	.096 2.44	.101 2.57	.062 1.57	.829 21.06	60°	—	45°	—	11-10-88	3-576017-6	S.T.	II
4-576131-2	INS MM	.070 1.78	.120 3.05	.035 0.89	.130 3.30	.150 3.80	.316 8.03	.488 12.40	.591 15.00	.020 0.51	45°	—	.027 0.69	.060 1.52	.004 0.10	.090 2.29	.096 2.44	.121 3.07	.020 0.51	.829 21.06	45°	—	45°	—	11-10-88	576019-4	S.T.	II
4-576131-3	INS MM	.062 1.57	.100 2.54	.031 0.79	.154 3.90	.163 4.15	.333 8.45	.486 12.34	.593 15.06	.010 0.25	45°	—	.020 0.51	.050 1.27	.003 0.08	.090 2.29	.106 2.69	.125 3.18	.030 0.76	.829 21.06	45°	—	45°	—	11-10-88	4-576533-4	S.T.	II
4-576131-4	INS MM	.110 2.79	.155 3.94	.055 1.40	—	.174 4.42	.375 9.53	.468 11.89	.593 15.06	—	45°	—	.028 0.71	.095 2.41	.009 0.23	.125 3.18	.079 2.00	.101 2.57	.062 1.57	.829 21.06	60°	—	45°	—	14-10-88	576009-6	S.H.	II
4-576131-5	INS MM	.090 2.29	.150 3.81	.045 1.14	—	.215 5.46	.375 9.53	.468 11.89	.593 15.06	—	45°	—	.037 0.94	.075 1.90	.008 0.20	.090 2.29	.081 2.06	.111 2.82	.062 1.57	.829 21.06	45°	—	45°	—	14-10-88	576064-0	S.H.	II
4-576131-6	INS MM	.140 3.56	.240 6.10	.070 1.78	.165 4.19	.225 5.71	.460 11.68	.478 12.14	.593 15.06	.060 1.52	45°	—	.042 1.07	.135 3.43	.006 0.15	.125 3.18	.036 0.91	.086 2.18	.031 0.79	.829 21.06	45°	—	45°	—	20-10-88	576074-2	S.H.	II
4-576131-7	INS MM	.160 4.06	.170 4.32	.080 2.03	.190 4.83	.205 5.21	.395 10.03	.488 12.40	.593 15.06	.015 0.38	45°	—	.017 0.43	.187 4.75	.013 0.33	.187 4.75	.071 1.80	.076 1.93	.062 1.57	.829 21.06	45°	—	45°	—	24-11-89	7-576017-3	S.T.	II
4-576131-8	INS MM	.090 2.29	.140 3.56	.045 1.14	.138 3.50	.165 4.19	.295 7.49	.488 12.40	.591 15.00	.028 0.71	45°	—	.034 0.86	.070 1.78	.008 0.20	.090 2.29	.086 2.18	.111 2.82	.020 0.51	.829 21.06	45°	—	45°	—	9-11-88	576019-5	S.H.	II
4-576131-9	INS MM	.110 2.79	.150 3.81	.055 1.40	.192 4.88	.207 5.26	.375 9.53	.468 11.89	.593 15.06	.015 0.38	45°	—	.029 0.74	.088 2.24	.009 0.23	.125 3.18	.081 2.06	.101 2.57	.063 1.57	.829 21.06	45°	—	30°	—	10-11-88	1-576017-9	S.H.	II
5-576131-0	INS MM	.070 1.78	.110 2.79	.035 0.89	.140 3.56	.157 3.99	.305 7.75	.478 12.14	.570 14.48	.010 0.25	60°	—	.019 0.48	.063 1.60	.003 0.08	.090 2.29	.101 2.57	.121 3.07	.025 0.64	.829 21.06	45°	—	30°	—	25-11-88	576002-6	S.H.	II
5-576131-1	INS MM	.090 2.29	.110 2.79	.045 1.14	—	.195 4.95	.355 9.02	.468 11.89	.593 15.06	—	45°	—	.023 0.58	.055 1.40	.005 0.13	.090 2.29	.101 2.57	.111 2.82	.062 1.57	.829 21.06	45°	—	45°	—	14-12-88	4-576017-0	S.H.	II

DIMENSIONS IN INCHES DO NOT SCALE PRINT  
DIMENSIONS IN MM 1 IN MM

SEE SHEET ONE

MATERIAL	HEAT TREAT	FINISH
SEE SH 1	SEE SH 1	SEE SH 1
UNLESS OTHERWISE SPECIFIED		
REMOVE BURRS, BREAK SHARP EDGES 015 (0.38) R MAX	0.005 (0.013)	0.005 (0.013)
ANGLES ± 0° 30'		
FIRST USED	WIRE RANGE	CLASS
PP	AREA	SCALE
DR S. Farris	W. J. G. 1/26	TERMINAL HOUSE, STANMORE, MIDD.
CHK J. D. Pitt	1/26	of Great Britain Ltd.
APP S. Farris	1/26	LOC E C No 576131 SH 3 OF 3 182
ISS	REVISION RECORD	ECN
		DATE
		NAME
		COMBINATION ANVIL - MINI-APPLICATOR

8 7 6 5 4 3 2 1

NAME, PART NO. & VENDOR SYMBOL IN AREA X..... LEGAL, HEALTH, SAFETY AND ENVIRONMENTAL CONSTRAINTS  
(INCLUDE DASH NO. & REV. LETTER) MAY APPLY TO THE MATERIALS SPECIFIED ON THIS  
PART MUST BE DEMARKETISED. DOCUMENT REFER TO ENGINEERING MATERIAL SPEC. 100-3012.

576131

3RD ANGLE AMERICAN PROJECTION  
DIMENSIONS IN METRIC  
DO NOT SCALE PRINT

This information is unclassified and is disclosed to you on condition that you will not disseminate it to the public or to other persons without written authorization from  
AMP OF GREAT BRITAIN LTD.

PART NO.	T	N	AT	AA	F	L	E	Y	G	M°	V°	WR	C	SR	D	RR	J	H	W	A	K°	B	AM°	AR	DATE	FIRST USED	DR	CK	TYPE		
5-576131-2	INS MM	.130 3.30	.170 4.32	.065 1.65	.166 4.22	.182 4.62	.340 8.64	.478 12.14	.593 15.06	.016 0.41	45°	#	#	.039 0.99	.091 2.31	.014 0.36	.125 3.18	.071 1.80	.091 2.31	.063 1.60	.829 21.06	45°	#	45°	#	2-12-88	576074-3	SM		II	
5-576131-3	INS MM	.090 2.29	.130 3.30	.045 1.14	.154 3.91	.169 4.29	.305 7.75	.486 12.34	.593 15.06	.015 0.38	45°	#	#	.022 0.56	.079 2.01	.008 0.20	.090 2.29	.091 2.31	.111 2.82	.030 0.76	.829 21.06	45°	#	45°	#	15-12-88	6-576533-1	SM		II	
5-576131-4	INS MM	.120 3.05	.150 3.81	.060 1.52	.150 3.81	.165 4.19	.312 7.92	.468 11.89	.593 15.06	.015 0.38	45°	#	#	.027 0.69	.091 2.31	.010 0.25	.125 3.17	.081 2.06	.096 2.44	.063 1.60	.829 21.06	45°	#	45°	#	19-12-88	576527-7	SM		II	
5-576131-5	INS MM	.120 3.05	.220 5.59	.060 1.52	#	.256 6.50	.424 10.77	.478 12.14	.593 15.06	#	45°	#	#	.022 0.56	.250 6.35	.011 0.28	.125 3.17	.046 1.17	.096 2.44	.043 1.09	.829 21.06	45°	#	45°	#	19-1-89	#	SM		II	
5-576131-6	INS MM	.090 2.29	.140 3.56	.045 1.14	.195 4.95	.221 5.61	.390 9.91	.478 12.14	.593 15.06	.015 0.38	60°	#	#	.031 0.79	.073 1.85	.007 0.18	.090 2.29	.086 2.18	.111 2.82	.040 1.02	.829 21.06	45°	#	30°	#	6-2-89	3-576017-4			II	
5-576131-7	INS MM	.110 2.79	.210 5.33	.055 1.40	.170 4.32	.210 5.33	.350 8.89	.480 12.19	.593 15.06	.020 0.51	60°	#	#	#	.009 0.23	.125 3.17	.051 1.30	.101 2.56	.035 0.89	.829 21.06	45°	#	30°	#	7-2-89	4-576533-2			II		
5-576131-8	INS MM	.120 3.05	.190 4.83	.060 1.52	.178 4.52	.210 5.33	.375 9.52	.468 11.89	.593 15.06	.034 0.86	45°	#	#	.005 0.13	.041 1.04	.109 2.77	.011 0.28	.125 3.17	.061 1.55	.096 2.44	.040 1.02	.829 21.06	45°	#	45°	#	7-2-89	3-576017-3			II
5-576131-9	INS MM	.110 2.79	.180 4.57	.055 1.40	.175 4.45	.201 5.10	.374 9.50	.468 11.89	.591 15.01	.025 0.63	45°	#	#	.019 0.48	.187 4.75	.005 0.13	.125 3.17	.061 1.55	.101 2.56	.063 1.60	.829 21.06	45°	#	45°	.020 0.51	25-7-89	7-576047-4			II	
6-576131-0	INS MM	.120 3.05	.180 4.57	.060 1.52	.178 4.52	.210 5.33	.375 9.53	.468 11.89	.593 15.06	.032 0.81	45°	#	#	.005 0.13	.022 0.56	.109 2.77	.011 0.28	.125 3.18	.066 1.68	.096 2.44	.040 1.02	.829 21.06	45°	#	45°	#	2-8-89	#	SM		II
6-576131-1	INS MM	.120 3.05	.180 4.57	.060 1.52	#	.276 7.01	.444 11.28	.498 12.65	.593 15.06	#	45°	#	#	.015 0.38	.125 3.18	.006 0.15	.125 3.17	.066 1.68	.096 2.44	.043 1.09	.829 21.06	45°	#	45°	.020 0.51	14-2-89	#			II	
6-576131-2	INS MM	.070 1.78	.110 2.79	.035 0.89	.140 3.56	.160 4.06	.343 8.71	.452 11.48	.593 15.06	.020 0.51	45°	#	#	.020 0.51	.061 1.55	.003 0.08	.090 2.29	.101 2.56	.121 3.07	.063 1.60	.829 21.06	45°	#	45°	#	14-2-89	4-576533-6			II	
6-576131-3	INS MM	.150 3.81	.200 5.08	.075 1.90	.159 4.04	.190 4.83	.350 8.89	.461 11.71	.593 15.06	.031 0.79	45°	#	#	.048 1.22	.109 2.77	.013 0.33	.187 4.75	.056 1.42	.081 2.06	.061 1.55	.829 21.06	45°	#	45°	#	14-2-89	4-576533-9			II	
6-576131-4	INS MM	.090 2.29	.140 3.56	.045 1.14	#	.210 5.33	.400 10.16	.478 12.14	.593 15.06	#	#	#	#	.029 0.74	.076 1.93	.007 0.18	.090 2.29	.086 2.18	.111 2.82	.075 1.90	.829 21.06	45°	#	45°	#	15-2-89	4-576017-2			II	
6-576131-5	INS MM	.120 3.05	.180 4.57	.060 1.52	.157 3.99	.173 4.39	.331 8.41	.488 12.39	.591 15.01	.016 0.41	45°	#	#	#	#	.011 0.28	.125 3.17	.066 1.68	.096 2.44	.031 0.79	.829 21.06	45°	#	45°	#	21-2-89	6-576533-0			II	
6-576131-6	INS MM	.120 3.05	.170 4.32	.060 1.52	#	.246 6.25	.414 10.51	.468 11.89	.593 15.06	#	45°	#	#	.037 0.94	.095 2.41	.006 0.15	.125 3.17	.071 1.80	.096 2.44	.043 1.09	.829 21.06	45°	#	45°	#	21-2-89	5-576017-1			II	
6-576131-7	INS MM	.070 1.78	.110 2.79	.035 0.89	.140 3.56	.157 3.99	.305 7.75	.478 12.14	.570 14.48	.010 0.25	60°	#	#	.019 0.48	.063 1.60	.003 0.08	.090 2.29	.101 2.56	.121 3.07	.063 1.60	.829 21.06	45°	#	30°	#	21-2-89	576032-3			II	
6-576131-8	INS MM	.080 2.03	.110 2.79	.040 1.02	.145 3.68	.167 4.24	.354 8.99	.459 11.66	.591 15.01	.013 0.33	60°	#	#	.024 0.61	.054 1.37	.006 0.15	.090 2.29	.101 2.56	.116 2.95	.031 0.79	.829 21.06	60°	#	30°	#	22-2-89	3-576017-5			II	
6-576131-9	INS MM	.090 2.29	.220 5.59	.045 1.14	.140 3.56	.175 4.44	.312 7.92	.478 12.14	.593 15.06	.020 0.51	60°	#	#	.022 0.56	.250 6.35	.007 0.18	.090 2.29	.046 1.17	.111 2.82	.031 0.79	.809 20.55	45°	#	30°	#	24-2-89	#			II	
7-576131-0	INS MM	.090 2.29	.140 3.56	.045 1.14	.144 3.66	.174 4.42	.315 8.00	.484 12.30	.593 15.06	.030 0.76	45°	#	#	.031 0.79	.073 1.85	.008 0.20	.090 2.29	.086 2.18	.111 2.82	.047 1.19	.829 21.06	45°	#	45°	#	28-2-89	3-576047-1			II	
7-576131-1	INS MM	.070 1.78	.130 3.30	.035 0.89	.131 3.33	.150 3.81	.250 6.35	.467 12.37	.593 15.06	.020 0.51	45°	#	#	.028 0.71	.068 1.73	.004 0.10	.090 2.29	.091 2.31	.121 3.07	.031 0.79	.829 21.06	45°	#	30°	#	1-3-89	3-576047-3			II	
7-576131-2	INS MM	.070 1.78	.120 3.05	.035 0.89	.140 3.56	.152 3.86	.320 8.13	.478 12.14	.593 15.06	.012 0.30	45°	#	#	.025 0.63	.063 1.60	.003 0.08	.090 2.29	.096 2.44	.121 3.07	.030 0.76	.829 21.06	45°	#	45°	#	13-3-89	576001-6			II	
7-576131-3	INS MM	.155 3.94	.210 5.33	.078 1.98	.195 4.95	.225 5.71	.440 11.18	.478 12.14	.700 17.78	.030 0.76	45°	#	#	.022 0.59	.187 4.75	.013 0.33	.187 4.75	.051 1.30	.079 2.01	.031 0.79	.829 21.06	45°	#	45°	#	8-5-89	576042-3			II	
7-576131-4	INS MM	.090 2.29	.140 3.56	.045 1.14	.150 3.81	.176 4.47	.350 8.89	.478 12.14	.593 15.06	.015 0.38	60°	#	#	.035 0.89	.069 1.75	.007 0.18	.090 2.29	.086 2.18	.111 2.82	.031 0.79	.829 21.06	60°	#	30°	#	22-6-89	576046-2			II	
7-576131-5	INS MM	.090 2.29	.140 3.56	.045 1.14	.181 4.60	.198 5.03	.375 9.52	.478 12.14	.593 15.06	.010 0.25	60°	#	#	.028 0.71	.079 2.00	.006 0.15	.090 2.29	.086 2.18	.111 2.82	.030 0.76	.829 21.06	45°	#	30°	#	3-7-89	5-576017-0			II	
7-576131-6	INS MM	.080 2.03	.120 3.05	.040 1.02	.125 3.18	.137 3.48	.408 10.36	.468 11.89	.593 15.06	.012 0.30	45°	#	#	.025 0.64	.063 1.60	.006 0.15	.090 2.29	.096 2.44	.116 2.95	.030 0.76	.829 21.06	45°	#	45°	#	7-7-89	576091-2			II	
7-576131-7	INS MM	.070 1.78	.090 2.29	.035 0.89	#	.150 3.81	.312 7.92	.478 12.14	.593 15.06	#	45°	#	#	.015 0.38	.048 1.22	.004 0.10	.090 2.29	.111 2.82	.121 3.07	.030 0.76	.829 21.06	45°	#	45°	#	2-03-90	576059-3			II	

SEE SHEET 1

MATERIAL	HEAT TREAT	FINISH
SEE SHEET 1	SEE SHEET 1	SEE SHEET 1
UNLESS OTHERWISE SPECIFIED		
REMOVE BURRS, BREAK SHARP EDGES 0.36R MAX.		
0.0 ± 0.51	0.000 ± 0.019	
0.00 ± 0.13	ANGLES ± 0° 30'	
FIRST USED	SCALE	
SEE TABLE		
DR. S.J. Tassie	12/1/89	
CHK. S.J. Tassie	12/1/89	
APP. S.J. Tassie	12/1/89	
<b>AMP</b> TERMINAL HOUSE, STAMORE, MIDDX.		
of Great Britain Ltd.		
NAME		
ANVIL - COMBINATION		
REV	ENGINEER	ECN
	DATE	
	SHT 4 OF 5	
LOC	C	NUMBER
		576131
		REV
		62

MARK PART NO. & VENDOR SYMBOL BY AREA X.....  
 (INCLUDE DASH NO. & REV. LETTER)  
 PART MUST BE REIDENTIFIED.

LEGAL, HEALTH, SAFETY AND ENVIRONMENTAL CONSTRAINTS  
 MAY APPLY TO THE MATERIALS SPECIFIED ON THIS  
 DOCUMENT REFER TO ENGINEERING MATERIAL SPEC. 100-2012.

NUMBER 576131

3rd ANGLE AMERICAN PROJECTION  
 DIMENSIONS IN METRIC  
 DO NOT SCALE PRINT

This information is confidential and is disclosed to you on condition that you will not disclose it  
 outside the company. Other than our personnel, without written authorization from  
 AMP OF GREAT BRITAIN LTD.

PART NO.		T	N	AT	AA	F	L	E	Y	G	M°	V°	WR	C	SR	D	RR	J	H	W	A	K°	B	AM°	AR	DATE	FIRST USED	DR	CK	TYPE
7-576131-8	INS	.070	.110	.035	.140	.157	.305	.478	.570	.010	60°	#	#	.019	.062	.003	.090	.101	.121	.025	.829	45°	#	30°	#	14-9-89	576001-7	SM		II
	MM	1.78	2.79	0.89	3.56	3.99	7.75	12.14	14.48	0.25				0.48	1.57	0.08	2.29	2.57	3.07	0.64	21.06									
7-576131-9	INS	.110	.160	.055	#	.174	.375	.468	.593	#	45°	#	#	.033	.091	.009	.125	.076	.101	.062	.829	60°	#	45°	#	22-9-89	5-576017-2	SM		II
	MM	2.79	4.06	1.40	#	4.42	9.53	11.89	15.06	#				0.84	2.31	0.23	3.18	1.93	2.57	1.57	21.06									
8-576131-0	INS	.062	.100	.031	.135	.161	.300	.478	.593	.015	60°	#	#	.019	.053	.003	.090	.106	.125	.063	.829	45°	#	45°	#	8-5-90	576590-3	SM		II
	MM	1.57	2.54	0.79	3.43	4.09	7.62	12.14	15.06	0.30				0.48	1.34	0.08	2.29	2.69	3.18	1.60	21.06									
8-576131-1	INS	.110	.165	.055	.178	.194	.375	.468	.593	.016	45°	#	#	.015	.187	.009	.125	.074	.101	.040	.829	45°	#	45°	#	8-5-90	2-576017-4	SM		II
	MM	2.79	4.19	1.40	4.52	4.93	9.53	11.89	15.06	0.41				0.38	4.75	0.23	3.18	1.88	2.57	1.02	21.06									
8-576131-2	INS	.090	.140	.045	.128	.157	.243	.461	.593	.030	45°	#	#	.031	.073	.008	.090	.086	.111	.048	.829	45°	#	45°	#	15-5-90	6-576533-8	SM		II
	MM	2.29	3.56	1.14	3.25	3.99	6.17	11.71	15.06	0.76				0.79	1.85	0.20	2.29	2.18	2.82	1.22	21.06									
8-576131-3	INS	.180	.270	.090	.220	.254	.445	.468	.593	.020	60°	#	#	.028	.300	.019	.187	.021	.066	.060	.829	45°	#	45°	#	18-6-90	1-576038-5	SM		II
	MM	4.57	6.86	2.29	5.59	6.45	11.30	11.89	15.06	0.51				0.71	7.62	0.48	4.75	0.53	1.68	1.52	21.06									
8-576131-4	INS	.080	.140	.040	#	.160	.350	.468	.593	#	45°	#	#	.034	.070	.006	.090	.086	.116	.062	.829	45°	#	45°	#	26-6-90	576077-3	SM		II
	MM	2.03	3.56	1.02	#	4.06	8.89	11.89	15.06	#				0.86	1.78	0.15	2.29	2.18	2.95	1.57	21.06									
8-576131-5	INS	.120	.180	.060	#	.246	.414	.468	.593	#	45°	#	#	.049	.090	.027	.060	.066	.096	.043	.829	45°	#	45°	#	24-7-90	7-576017-8	SM		II
	MM	3.05	4.57	1.52	#	6.25	10.52	11.89	15.06	#				1.24	2.29	0.69	1.52	1.68	2.44	1.09	21.06									
8-576131-6	INS	.110	.160	.055	.158	.170	.367	.468	.593	.012	45°	#	#	.031	.094	.004	.125	.076	.101	.070	.829	45°	#	45°	#	13-9-90	8-576017-0	SM		II
	MM	2.79	4.06	1.40	4.01	4.32	9.32	11.89	15.06	0.20				0.79	2.39	0.10	3.15	1.93	2.57	1.78	21.06									
8-576131-7	INS	.120	.180	.060	#	.205	.355	.448	.593	#	45°	#	#	.049	.090	.027	.060	.066	.096	.082	.829	45°	#	45°	#	27-11-90	1-576064-8	SM		II
	MM	3.05	4.57	1.52	#	5.21	9.02	11.38	15.06	#				1.24	2.29	0.69	1.52	1.68	2.44	2.08	21.06									
8-576131-8	INS	.100	.150	.050	.181	.198	.375	.478	.593	.010	60°	#	#	.037	.076	.007	.125	.081	.106	.030	.829	45°	#	30°	#	8-3-91	576520-4	SM		II
	MM	2.54	3.81	1.27	4.60	5.03	9.53	12.14	15.06	0.25				0.94	1.93	0.18	3.18	2.06	2.69	0.76	21.06									
C 576131-9	INS	.100	.130	.050	.181	.198	.375	.478	.593	.010	60°	#	#	.014	.125	.007	.125	.091	.106	.030	.829	45°	#	30°	#	13-3-91	576520-2	SM		II
	MM	2.54	3.30	1.27	4.60	5.03	9.53	12.14	15.06	0.25				0.36	3.18	0.18	3.18	2.31	2.69	0.76	21.06									
9-576131-0	INS	.110	.180	.055	.192	.207	.375	.468	.593	.015	45°	#	#	.045	.094	.009	.125	.066	.101	.063	.829	45°	#	45°	#	26-3-91	7-576017-0	SM		II
	MM	2.79	4.57	1.40	4.88	5.26	9.53	11.89	15.06	0.38				1.14	2.39	0.23	3.18	1.68	2.57	1.60	21.06									
9-576131-1	INS	.130	.180	.065	.166	.182	.340	.478	.593	.016	45°	#	#	.049	.090	.014	.125	.066	.091	.063	.829	45°	#	45°	#	24-5-91	576074-5	SM		II
	MM	3.30	4.57	1.65	4.22	4.62	8.64	12.14	15.06	0.41				1.24	2.29	0.36	3.18	1.68	2.31	1.60	21.06									
9-576131-2	INS	.080	.140	.040	#	.174	.316	.458	.593	#	45°	#	#	.028	.079	.007	.090	.086	.116	#	.829	45°	#	45°	#	24-5-91	576525-1	SM		II
	MM	2.03	3.56	1.02	#	4.42	8.03	11.63	15.06	#				0.71	2.01	0.18	2.29	2.18	2.95	#	21.06									
9-576131-3	INS	.080	.160	.040	#	.174	.316	.458	.593	#	45°	#	#	.014	.187	.007	.090	.076	.116	#	.829	45°	#	45°	#	24-5-91	576525-2	SM		II
	MM	2.03	4.06	1.02	#	4.42	8.03	11.63	15.06	#				0.36	4.75	0.18	2.29	1.93	2.95	#	21.06									
9-576131-4	INS	.160	.210	.080	.175	.190	.413	.478	.591	.026	30°	#	#	.044	.083	.033	.069	.051	.076	.043	.829	45°	#	30°	#	13-8-91	4-576019-2	SM		II
	MM	4.06	5.33	2.03	4.45	4.83	10.49	12.14	15.01	0.66				1.12	2.11	0.84	1.75	1.30	1.93	1.10	21.06									
9-576131-5	INS	.120	.170	.060	#	.201	.374	.468	.591	.025	#	#	#	.037	.095	.019	.048	.071	.096	.043	.829	45°	#	45°	#	13-8-91	4-576019-1	SM		II
	MM	3.05	4.32	1.52	#	5.11	9.50	11.89	15.01	0.64				0.94	2.41	0.48	1.22	1.80	2.44	1.10	21.06									
9-576131-6	INS	.090	.120	.045	.140	.160	.343	.452	.591	.020	45°	#	#	.026	.062	.015	.042	.096	.111	.063	.829	45°	#	45°	#	13-8-91	4-576019-0	SM		II
	MM	2.29	3.05	1.14	3.56	4.06	8.71	11.48	15.01	0.51				0.66	1.57	0.38	1.07	2.44	2.82	1.60	21.06									
9-576131-7	INS	.090	.150	.045	.181	.198	.375	.478	.593	.010	60°	#	#	.037	.076	.006	.090	.081	.111	.030	.829	45°	#	30°	#	24-9-91	9-576017-6	SM		II
	MM	2.29	3.81	1.14	4.60	5.03	9.53	12.14	15.06	0.25				0.94	1.93	0.15	2.29	2.06	2.82	0.76	21.06									
9-576131-8	INS	.190	.210	.095	#	.235	.430	.468	.593	#	45°	#	#	.020	.250	.021	.187	.051	.061	.031	.829	45°	#	45°	#	23-10-91	9-576017-8	SM		II
	MM	4.83	5.33	2.41	#	5.97	10.92	11.89	15.06	#				0.51	6.35	0.53	4.75	1.30	1.55	0.79	21.06									
9-576131-9	INS	.090	.140	.045	.125	.145	.343	.468	.593	.020	45°	#	#	.035	.069	.007	.090	.086	.111	.063	.829	45°	#	45°	#	21-1-92	576009-8	SM		II
	MM	2.29	3.56	1.14	3.18	3.68	8.71	11.89	15.06	0.51				0.89	1.75	0.18	2.29	2.18	2.82	1.60	21.06									

MATERIAL	HEAT TREAT	FINISH
SEE SHEET 1	SEE SHEET 1	SEE SHEET 1
UNLESS OTHERWISE SPECIFIED } REMOVE BURRS, BREAK SHARP EDGES 0.38R MAX. 0.0 =		