

REV	DATE	DESCRIPTION	BY	CHK	APPV
A	10JUL2007	RELEASED	S.Y.	H.Y.	
A.1	16APR2008	ADD -3	S.Y.	H.Y.	
B	28MAY10	REVISED	TS	KB	
B.1	11APR11	REVISED	AY	HY	

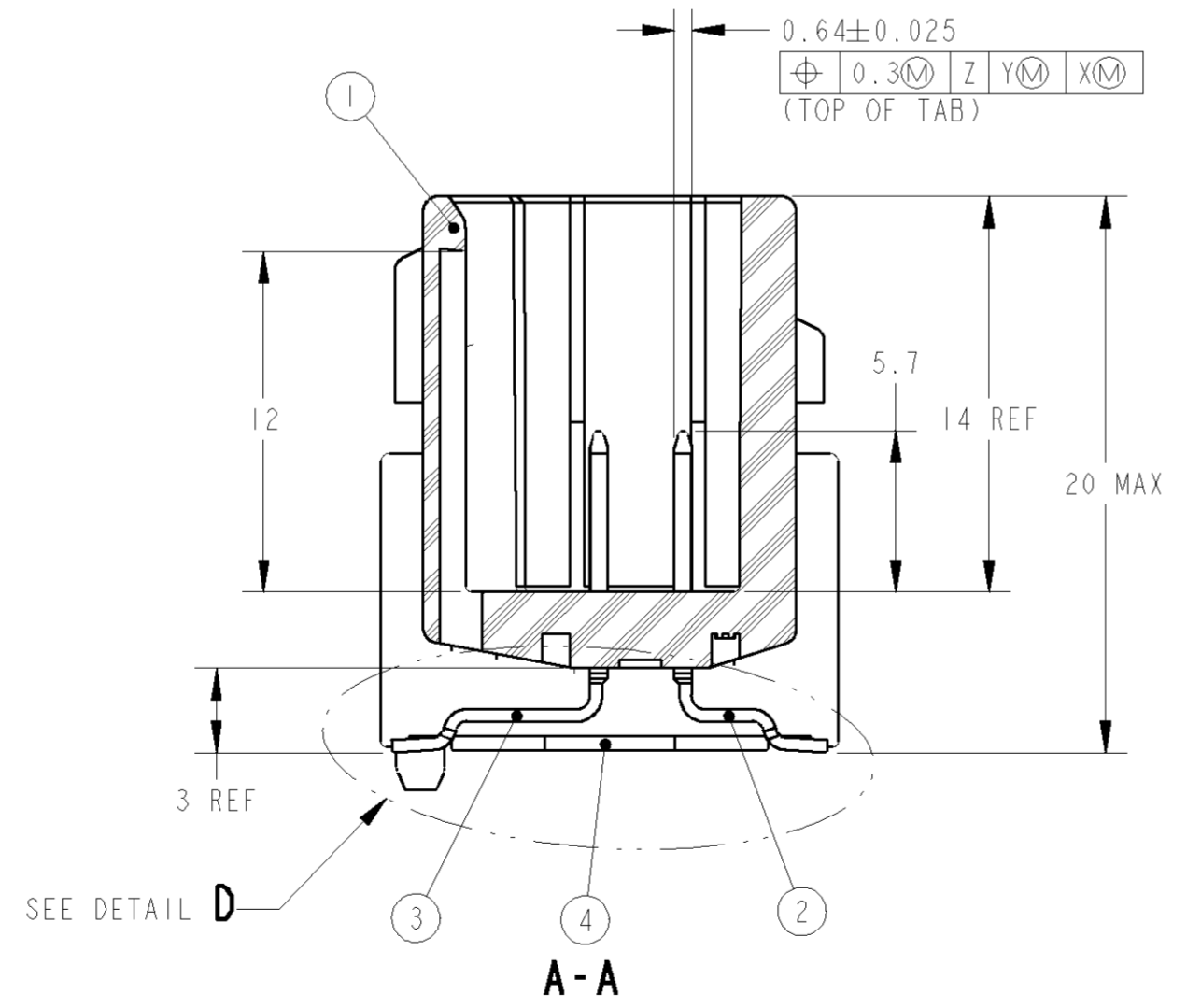
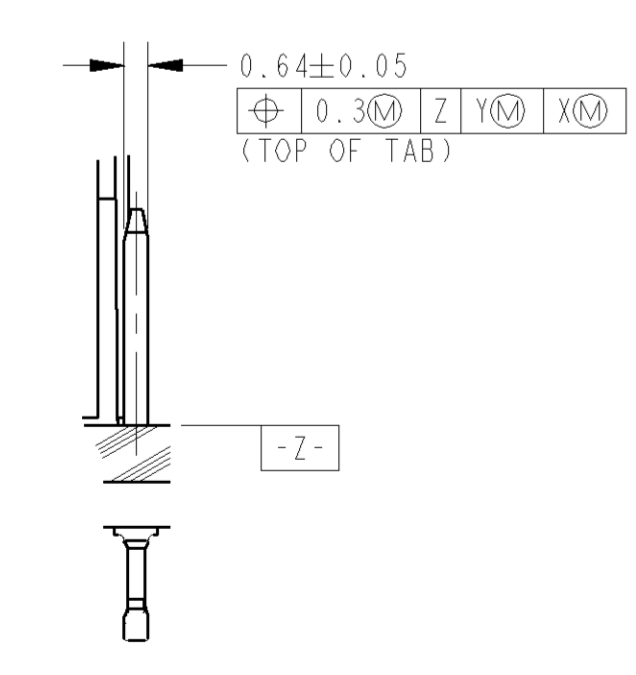
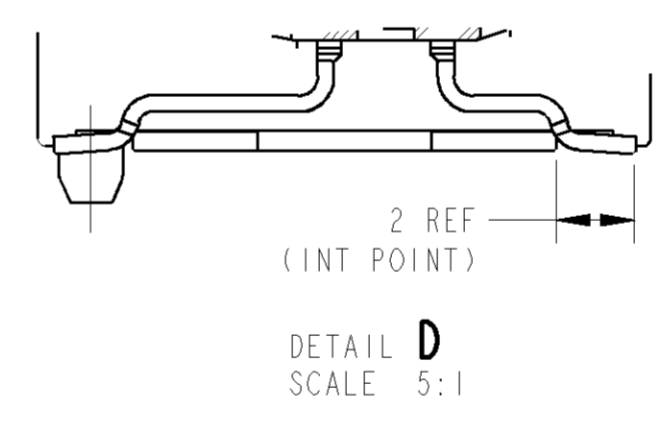
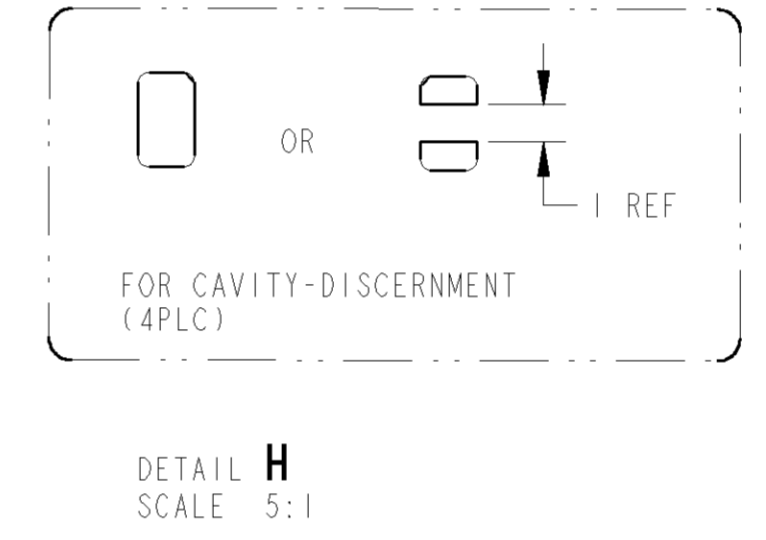
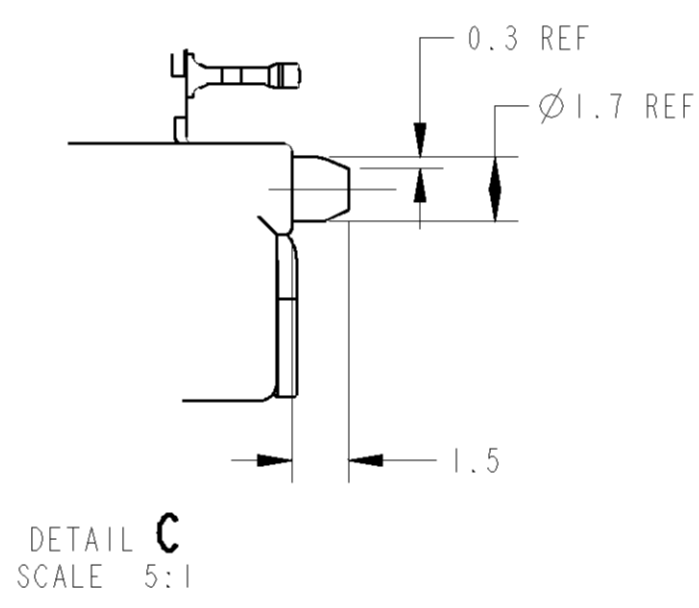
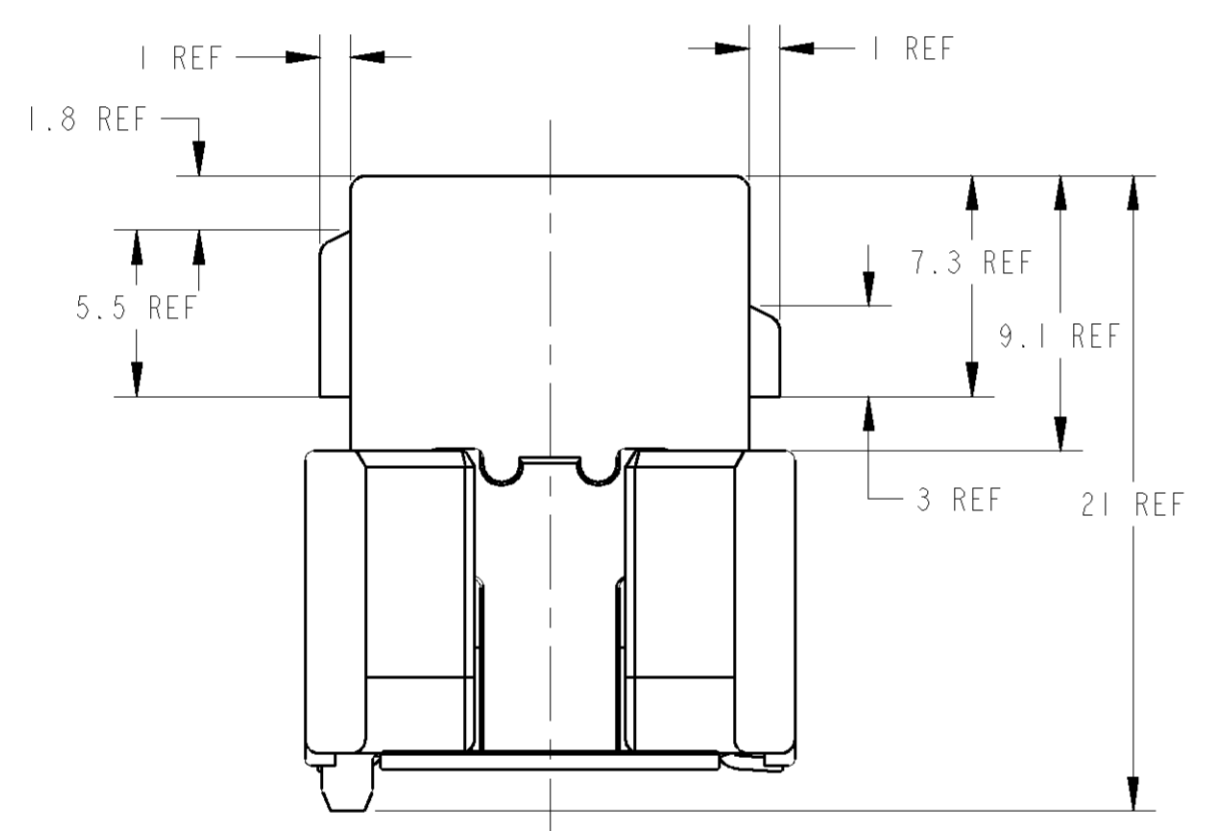
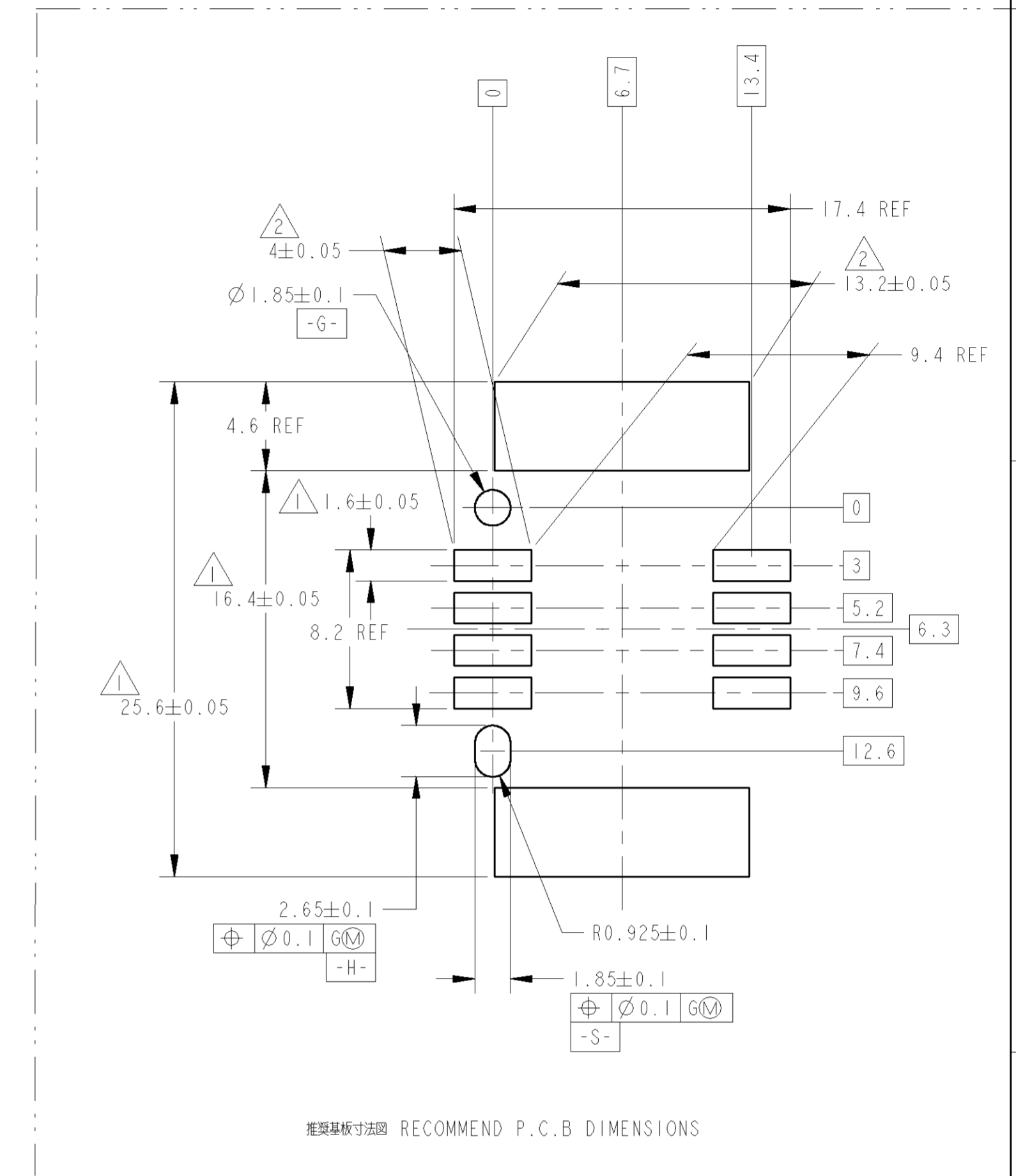
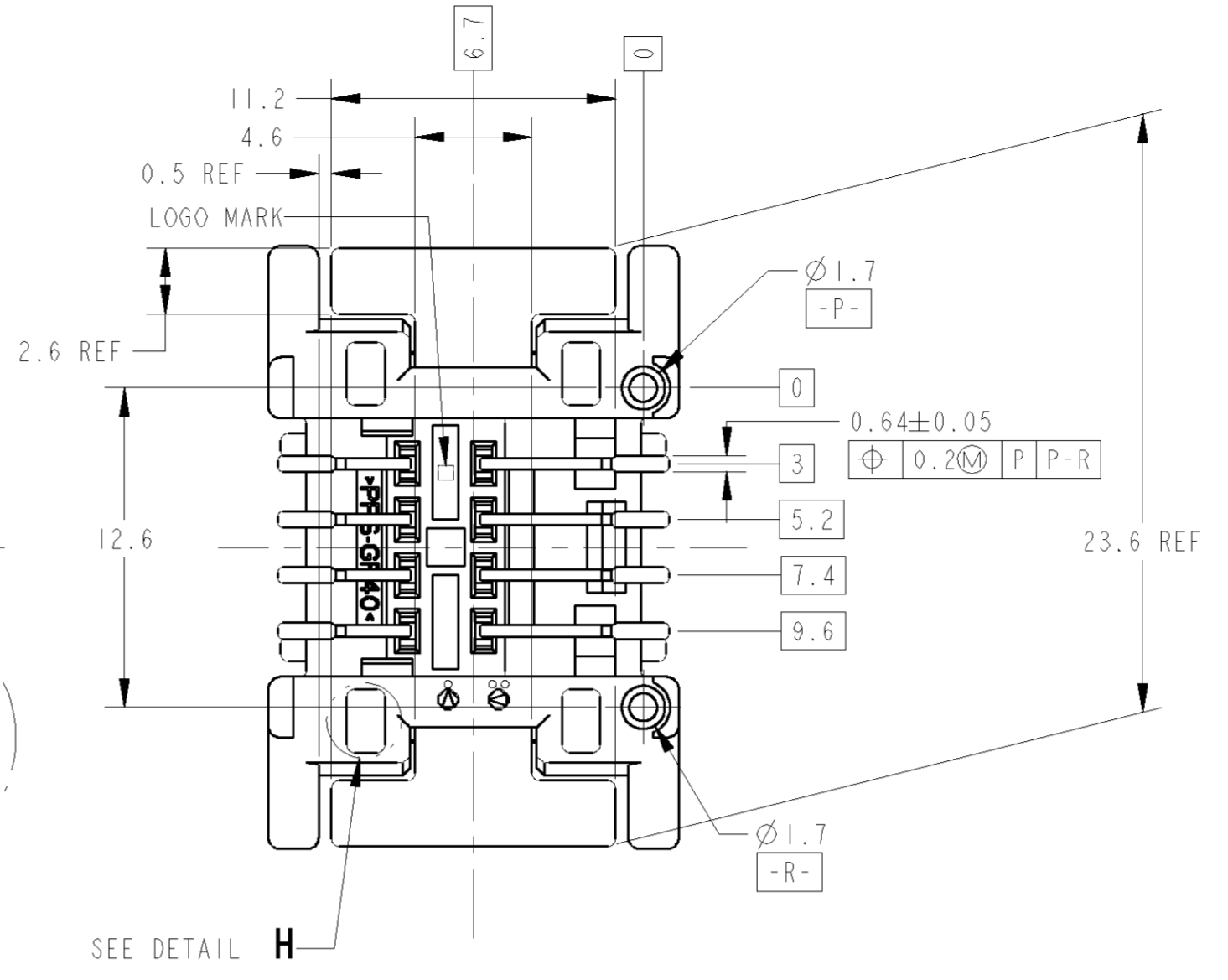
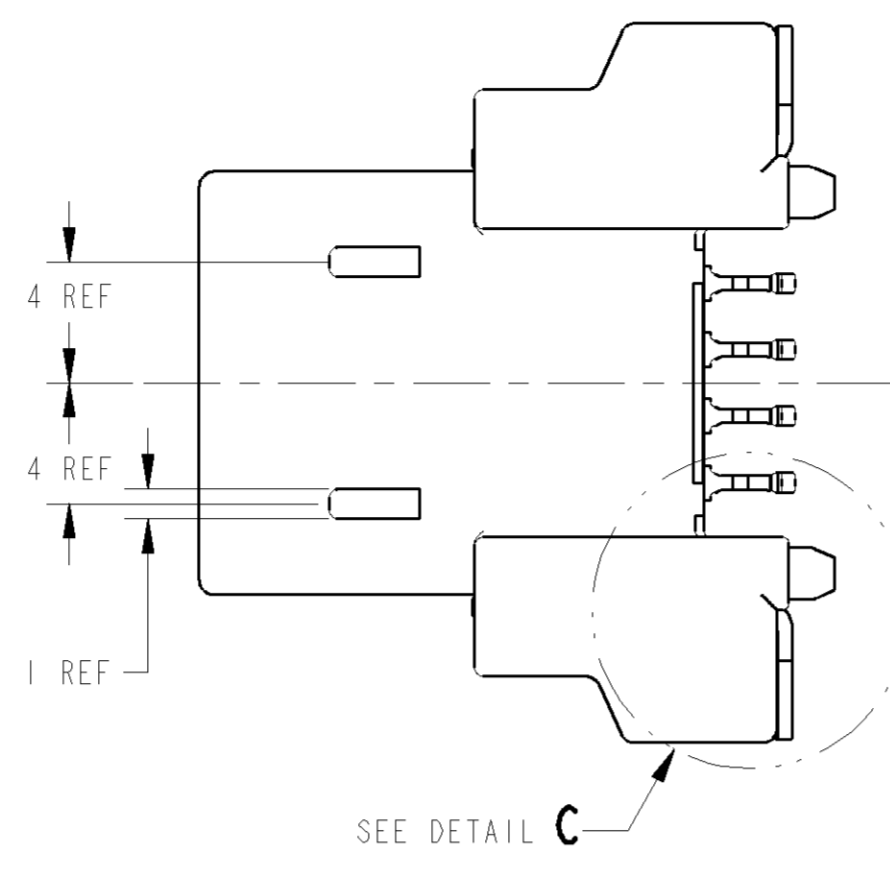
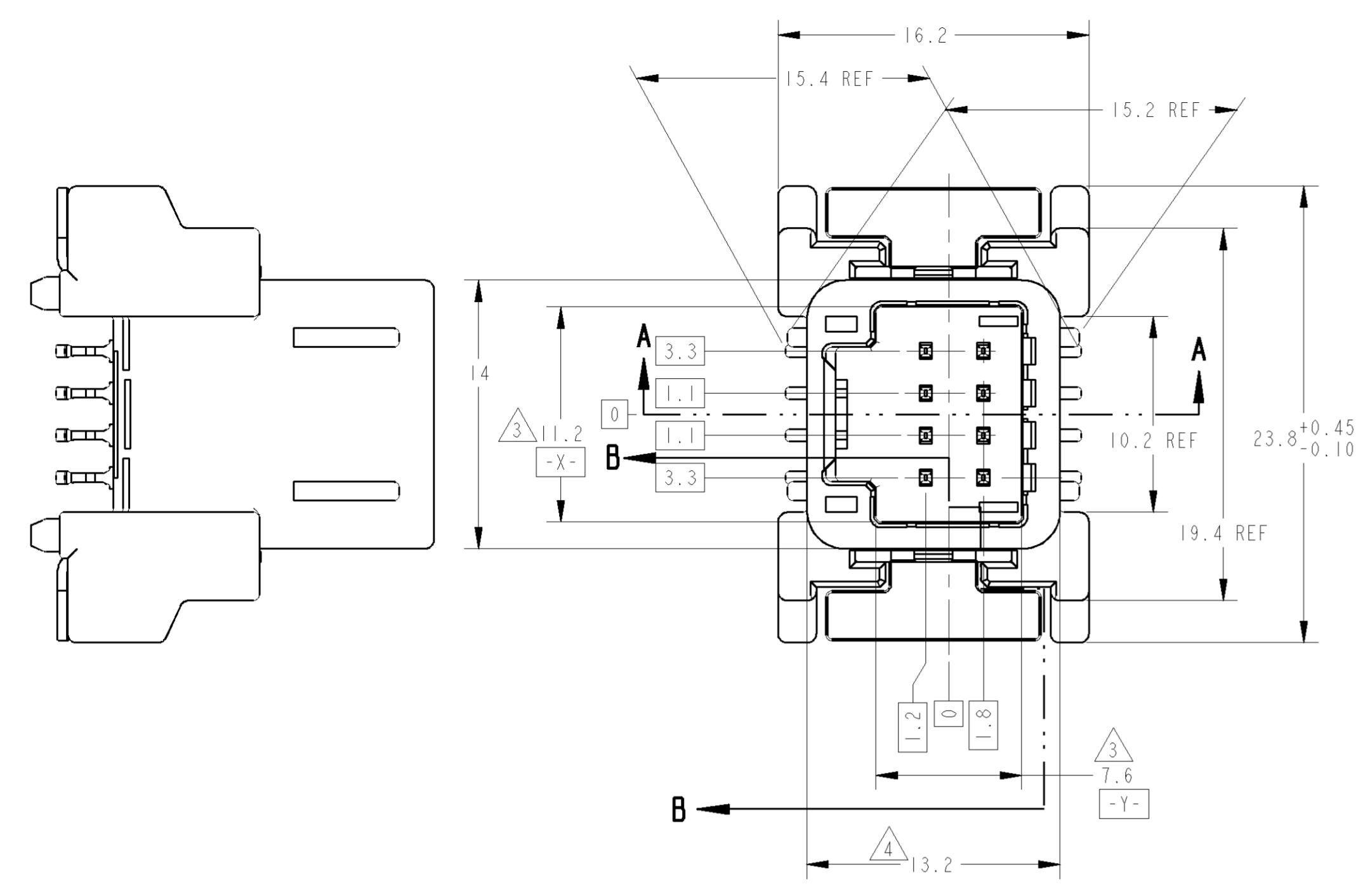


TABLE-2

POS. 極数	FINISH	TYPE
8	TIN	0.64

TABLE-1

POS. 極数	TYPE	P/N
8	0.64 CRIMP	1376352
8	0.64111 CRIMP	1717103
8	0.64 IDC	1473802

- △ $\varnothing 0.1 \text{ G } 6 \text{ G-H}$ を適用すること
- △ $\varnothing 0.1 \text{ G } 6 \text{ G-S}$ を適用すること
- △ $-Z-$ 自より6mmの位置で測定
- △ 最大寸法で管理
- 5. 嵌合相手コネクタの番番: TABLE-1 参照
- 6. 端子構造: TABLE-2 参照
- 7. 本製品の取扱は取扱説明書 No. 411-78145 に従うこと。
- 8. 使用基板の厚さは1.6mm
- 9. 実装時の半田ペーストの厚さは0.15mm以上。
- △ .POSITION TOLERANCE $\varnothing 0.1 \text{ G } 6 \text{ G-H}$
- △ .POSITION TOLERANCE $\varnothing 0.1 \text{ G } 6 \text{ G-S}$
- △ .MEASURED AT 6mm FROM $-Z-$
- △ .MUST BE CONTROLLED AT MAXIMUM DIMENSION
- 5. MATING CONNECTOR PART No.: SEE TABLE-1
- 6. DETAIL OF TERMINALS: SEE TABLE-2
- 7. HANDLING OF THIS PART SHOULD FOLLOW INSTRUCTION SHEET No. 411-78145
- 8. APPLICABLE PRINTED CIRCUIT BOARD'S THICKNESS 1.6mm
- 9. WHEN MOUNTING, THICKNESS OF SOLDER PASTE: 0.15mm MIN.

OUTER 外装	PAPER BOX タンボール箱	PAPER BOX タンボール箱	PLASTIC BOX 差し箱	PACKING STYLE 梱包形態		
				2	SOLDER PEG	POST-TIN
INNER 内装	HARD TARY ハードトレイ	PLASTIC TUBE プラスチックチューブ	PLASTIC TUBE プラスチックチューブ	4	0.64 TAB CONTACT (L)	POST-TIN
				4	0.64 TAB CONTACT (S)	POST-TIN
				1	8P CAP HOUSING	BLACK
				NAME		FINISH/COLOR NO.

THIS DRAWING IS A CONTROLLED DOCUMENT. DWN: S. YOKOZEKI 10JUL2007
 CHK: S. AMEMIYA 10JUL2007
 DIMENSIONS: 公差: ±0.3
 TOLERANCES UNLESS OTHERWISE SPECIFIED: 公差: ±0.3
 MATERIAL: HOUSING: PPS GF40 CONTACT: BRASS SOLDER PEG: BRASS
 FINISH: SEE TABLE
 WEIGHT: 5.1 g
 CUSTOMER DRAWING
TE TE Connectivity
 0.64 SMD 8POSITION CAP ASSEMBLY V-TYPE
 SIZE: A1 CASE CODE: 00779 DRAWING NO: 1939403
 SHEET: 4:1 OF 1 REV: B