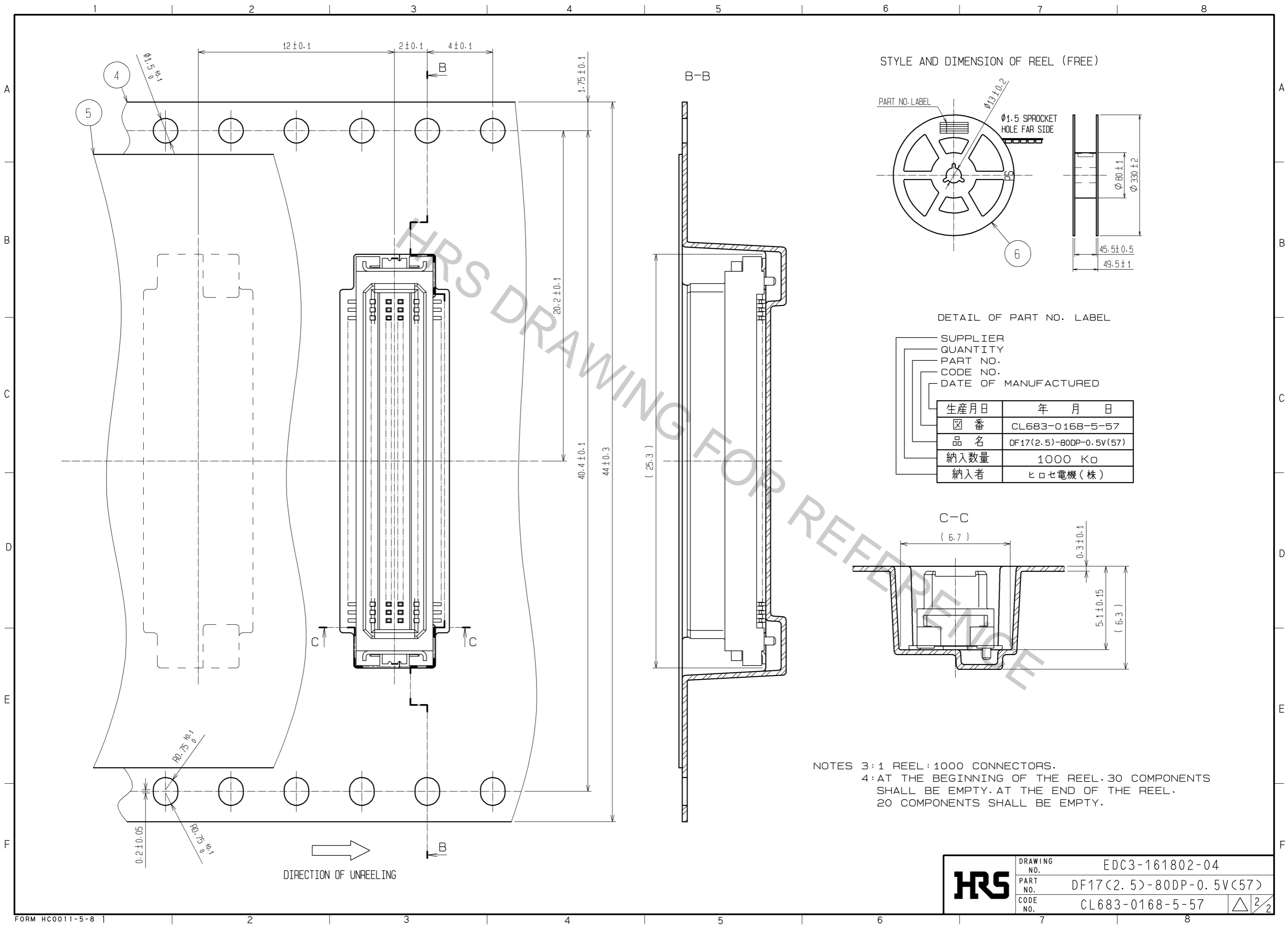


NOTES 1 LEAD CO-PLANARITY INCLUDE REINFORCED METAL FITTINGS SHALL BE 0.1mm MAX.  
 2 WHEN A PART MARKED WITH [X] HAS A PATTERN BUT NO RESIST ON IT. TAKE CARE TO PREVENT THE CONNECTOR FROM TOUCHING IT.

MATED HIGHT(h)		(mm)	
HEADER No.	RECEPTACLE No.	DF17#(3.0)-80DS-0.5V(57)	DF17#(4.0)-80DS-0.5V(57)
DF17(2.5)-80DP-0.5V(57)	5.5	6.5	

2	POLYAMIDE (PA6T)	WHITE BEIGE . UL94V-0	6	PS	PLASTIC REEL . BLACK		
1	PHOSPHER BRONZE	CONTACT AREA:GOLD PLATED 0.1#m min LEAD AREA:TIN PLATED 1 #m min UNDER PLATING:NICKEL PLATED 1 #m min	5	POLYESTER	CLEAR (COVER TAPE)		
			4	A-PET	CLEAR (EMBOSSD CARRIER TAPE)		
			3	PHOSPHER BRONZE	TIN PLATED 1#m min. UNDER PLATING:NICKEL PLATED 1#m min		
NO.	MATERIAL	FINISH . REMARKS	NO.	MATERIAL	FINISH . REMARKS		
UNITS		SCALE	COUNT	DESCRIPTION OF REVISIONS	DESIGNED	CHECKED	DATE
mm		5 : 1					
<b>HRS</b> HIROSE ELECTRIC CO., LTD.		APPROVED : KH. IKEDA	08.11.27	DRAWING NO. EDC3-161802-04			
		CHECED : TS. MIYAZAKI	08.11.27	PART NO. DF17(2.5)-80DP-0.5V(57)			
		DESIGNED : TY. YAMASAKI	08.11.26	CODE NO. CL683-0168-5-57			
		DRAWN : TY. YAMASAKI	08.11.26				



NOTES 3:1 REEL:1000 CONNECTORS.  
 4: AT THE BEGINNING OF THE REEL, 30 COMPONENTS SHALL BE EMPTY. AT THE END OF THE REEL, 20 COMPONENTS SHALL BE EMPTY.

<b>HRS</b>	DRAWING NO.	EDC3-161802-04
	PART NO.	DF17(2.5)-80DP-0.5V(57)
	CODE NO.	CL683-0168-5-57
		$\triangle$ 2/2