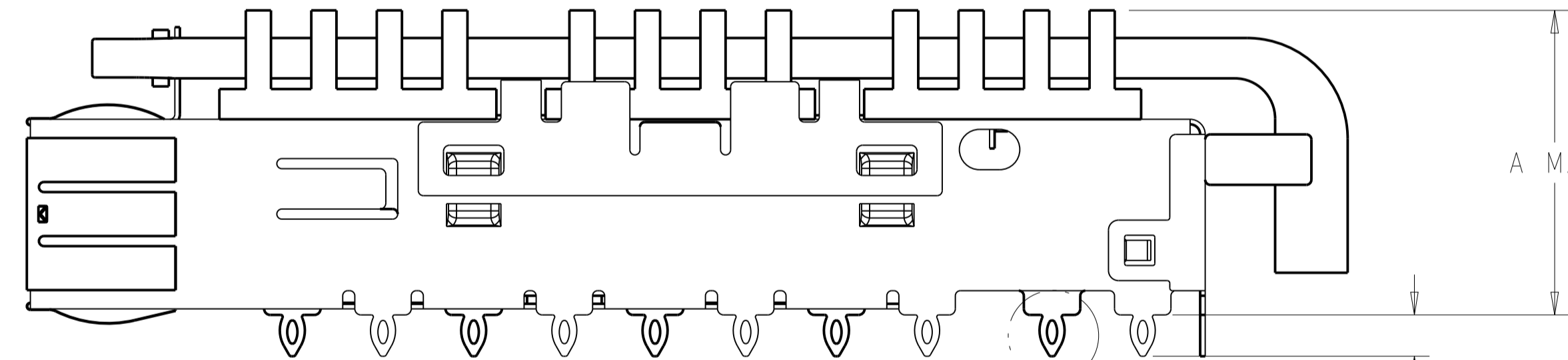
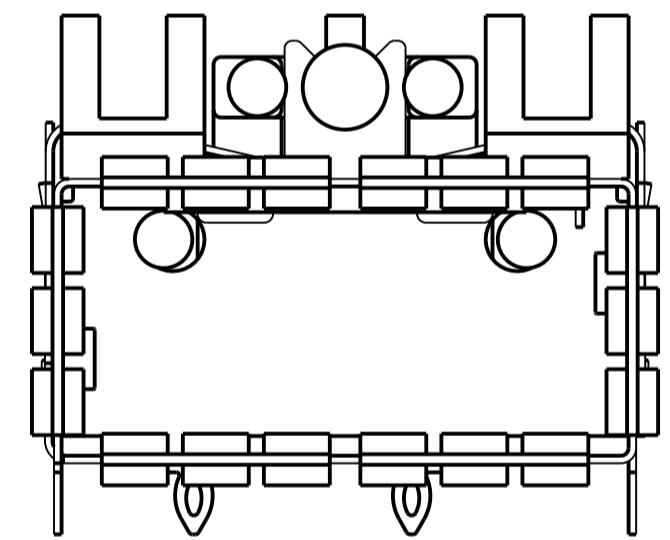
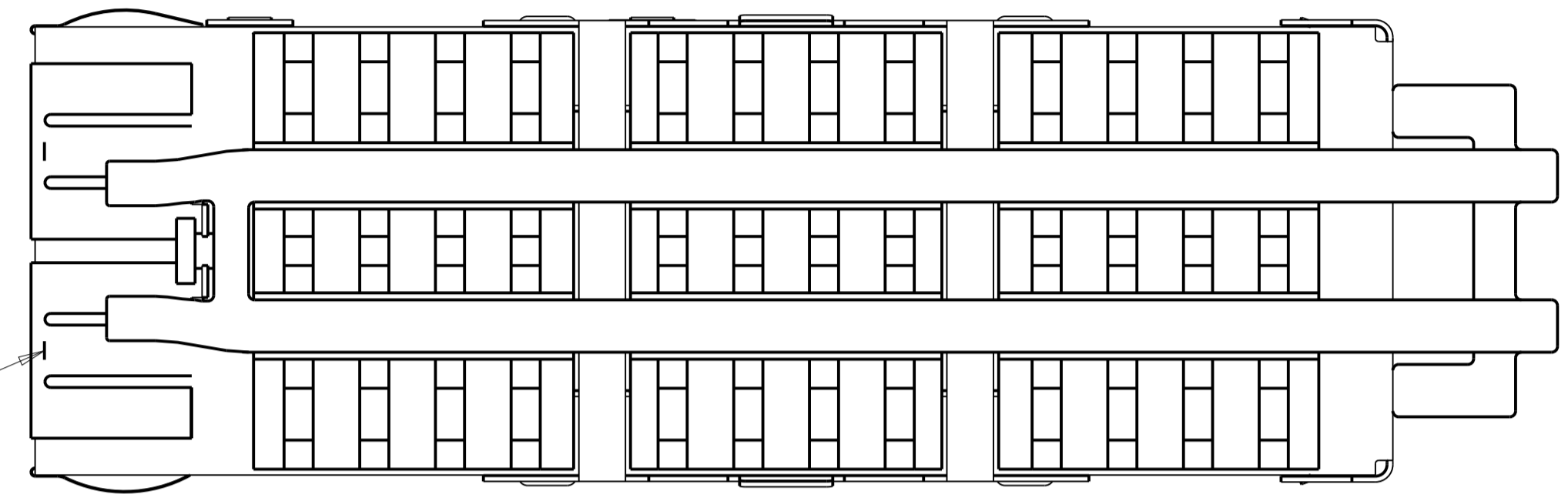


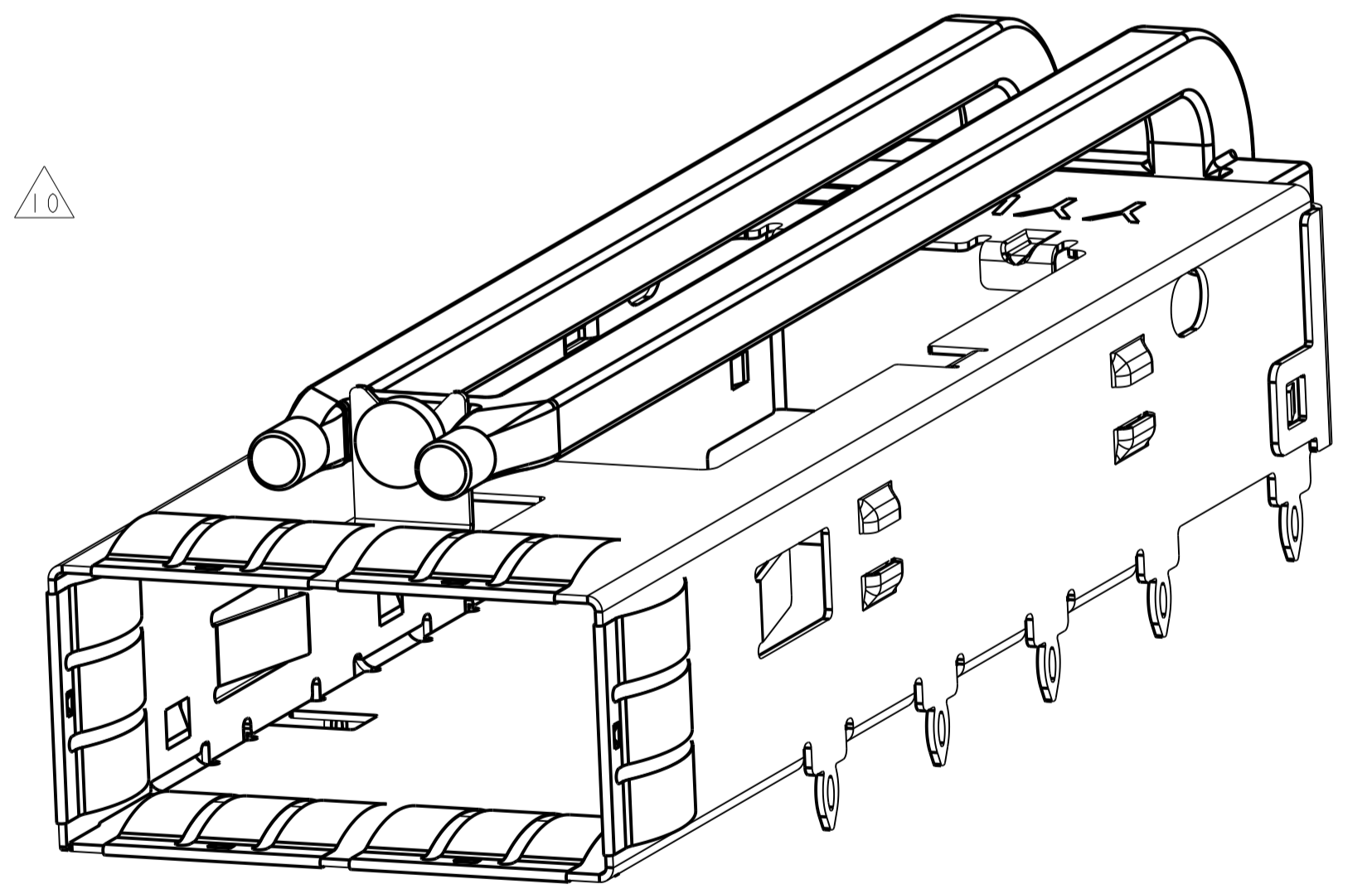
LOC		DIST		REVISIONS			
GP	00	P	LTN	DESCRIPTION	DATE	DWN	APVD
		A1		RELEASED PER ECR-11-007241	08APR2011	AL	CW
		A2		REVISED PER ECO-14-012634	18AUG2014	RG	MC

- △ MATERIAL:  
 CAGE: NICKEL SILVER, 0.25 THICK  
 HEAT SINK: ALUMINUM  
 HEAT SINK CLIP: STAINLESS STEEL  
 EMI SPRINGS: COPPER ALLOY  
 LIGHT PIPE: CLEAR POLYCARBONATE.
- △ MINIMUM PITCH DIMENSION.
- 3. MATES WITH SFF-8436 COMPATIBLE TRANSCEIVER.
- △ REFERENCE APPLICATION SPEC 114-13217 FOR RECOMMENDED DRILL HOLE DIAMETER AND PLATING THICKNESS.
- △ DATUMS AND BASIC DIMENSIONS ESTABLISHED BY CUSTOMER.
- 6. MINIMUM PC BOARD THICKNESS:  
 SINGLE SIDED = 1.45mm (shown, pg. 4)  
 DOUBLE SIDED = 2.2mm.
- △ HEATSINK, LIGHT PIPE, AND CLIP SHIPPED ASSEMBLED TO CAGE ASSEMBLY. CAGE ASSEMBLY MAY BE PRESSED INTO THE PCB AS SHIPPED.
- △ DATUM -A- IS TOP SURFACE OF HOST BOARD.
- △ SURFACE TRACES PERMITTED WITHIN THIS LENGTH EXCEPT WHERE CAGE STANDOFFS, SHOWN IN DETAIL J, CONTACT PC BOARD.
- △ DIMENSION APPLIES WITH MODULE INSTALLED IN CAGE.
- 11. MAXIMUM HEIGHT OF CUSTOMER SUPPLIED LED OFF BOARD: 1.70mm.
- △ DATE CODE (YYWW) MARKED ON TOP OF CAGE AND CONCEALED BY HEAT SINK APPLIES TO CAGE ASSEMBLY ONLY.
- △ HEAT SINK AND CLIP SHIPPED ASSEMBLED TO CAGE ASSEMBLY. CAGE ASSEMBLY MAY BE PRESSED INTO THE PCB AS SHIPPED. LIGHT PIPE MUST BE ASSEMBLED BY CUSTOMER AFTER THE CAGE IS SEATED ON THE PCB.
- △ SPRING FINISH: 0.8um MIN TIN OVER 0.8um MIN NICKEL.  
 HEAT SINK FINISH: NICKEL.  
 NON-PLATED EDGES PERMISSIBLE.
- 15. PRODUCT HAS NOT COMPLETED QUALIFICATION TESTING.

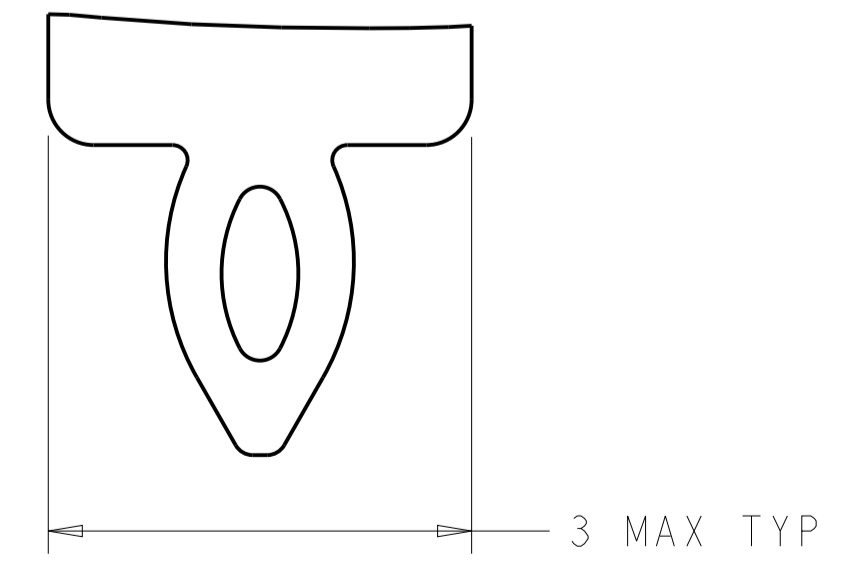
Sn42Bi58 SOLDER  
6 PLACES



SEE DETAIL J



1888971-4 AS SHOWN  
SCALE 5:1

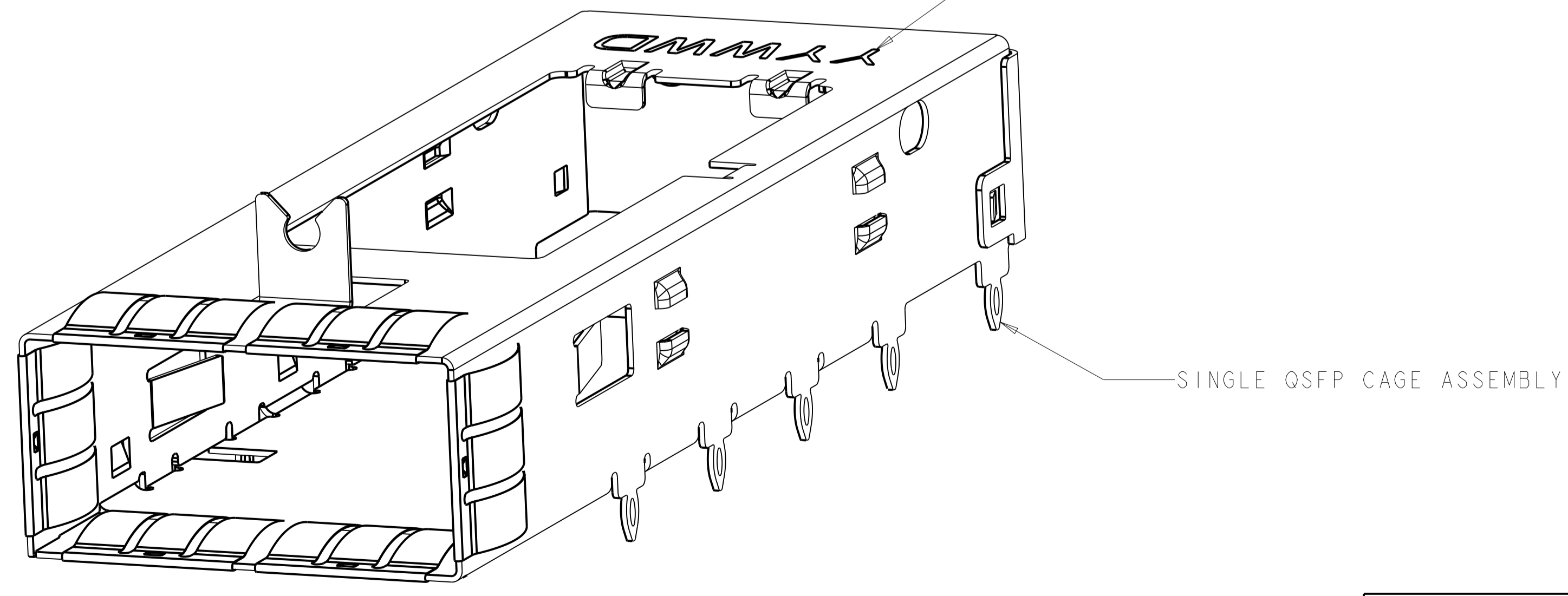
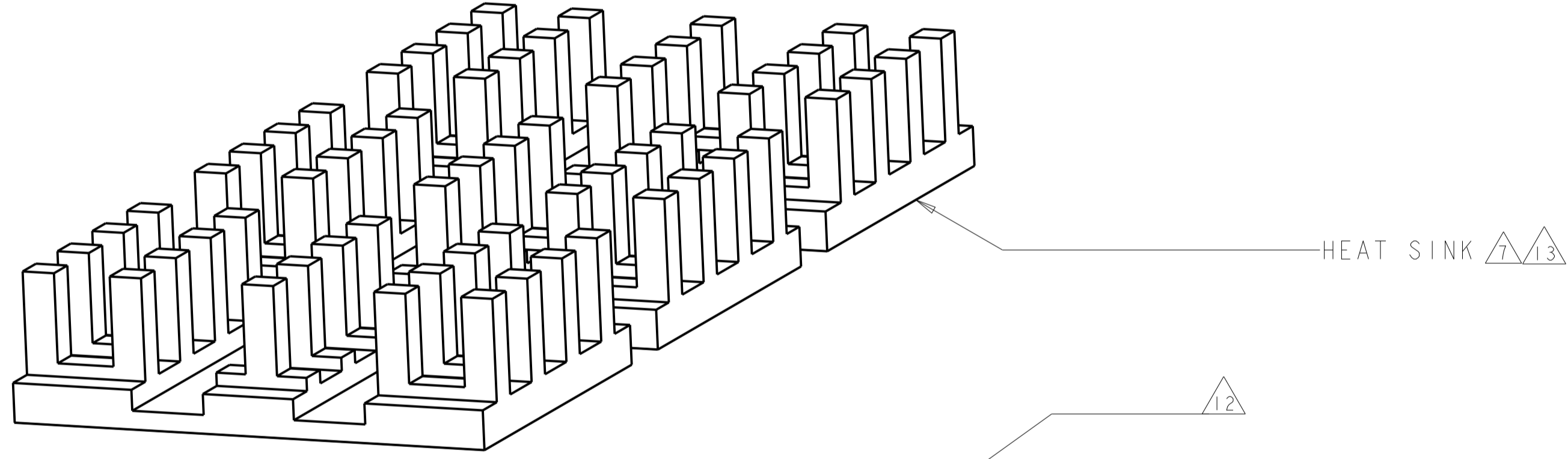
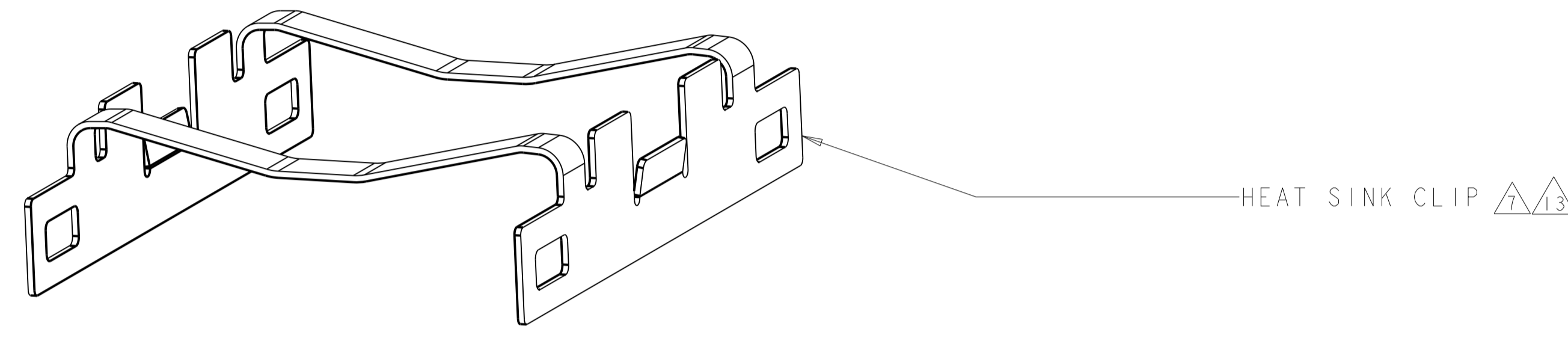
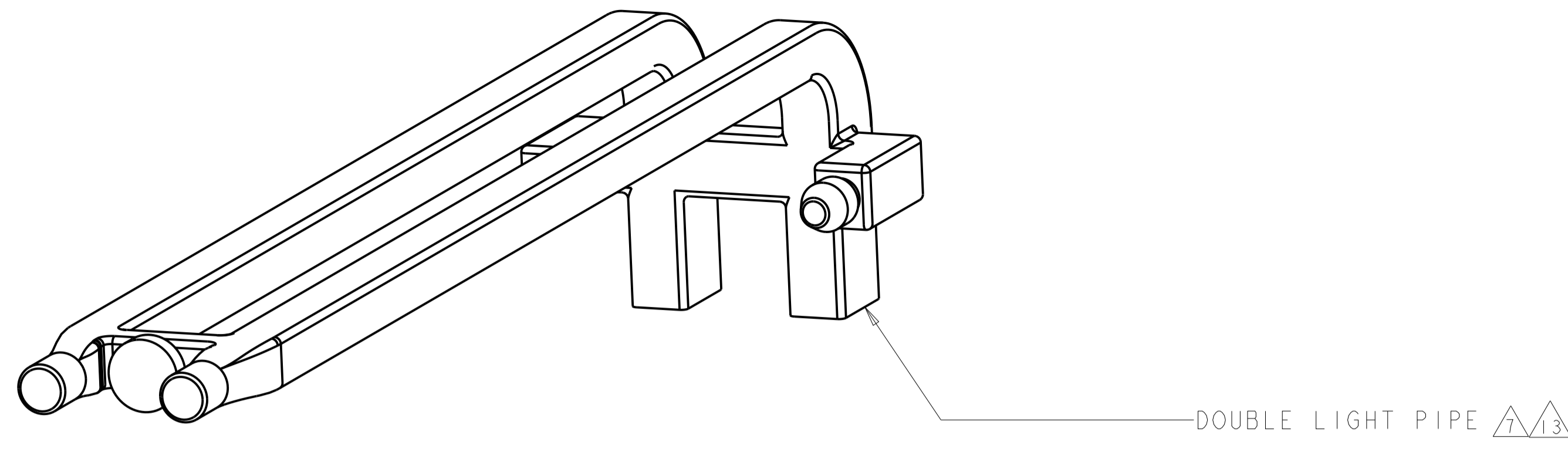


DETAIL J  
SCALE 20:1

DESCRIPTION	PART NUMBER
- NO HEAT SINK	1888971-4
13.7 PCI HEAT SINK	1888971-3
23.0 NETWORKING HEAT SINK	1888971-2
16.0 SAN HEAT SINK (SHOWN)	1888971-1

THIS DRAWING IS A CONTROLLED DOCUMENT.		OWN: C. VALENTINE 22FEB2007	TE Connectivity	
DIMENSIONS: mm		CHK: E. BRIGHT 22FEB2007		
TOLERANCES UNLESS OTHERWISE SPECIFIED:		APVD: E. BRIGHT 22FEB2007	NAME: CAGE ASSEMBLY, THRU BEZEL, QSFP, W/ HEAT SINK AND DOUBLE LIGHT PIPE	
0 PLC	±0.13	PRODUCT SPEC	108-2286	
1 PLC	±0.13	APPLICATION SPEC	114-13217	
2 PLC	±0.13	SIZE	CAGE CODE DRAWING NO	
3 PLC	±0.013	WEIGHT	A100779C=1888971	
4 PLC	±0.013	Customer Drawing	SCALE 4:1 SHEET 1 OF 4 REV A2	
ANGLES	±0.0001			
FINISH				

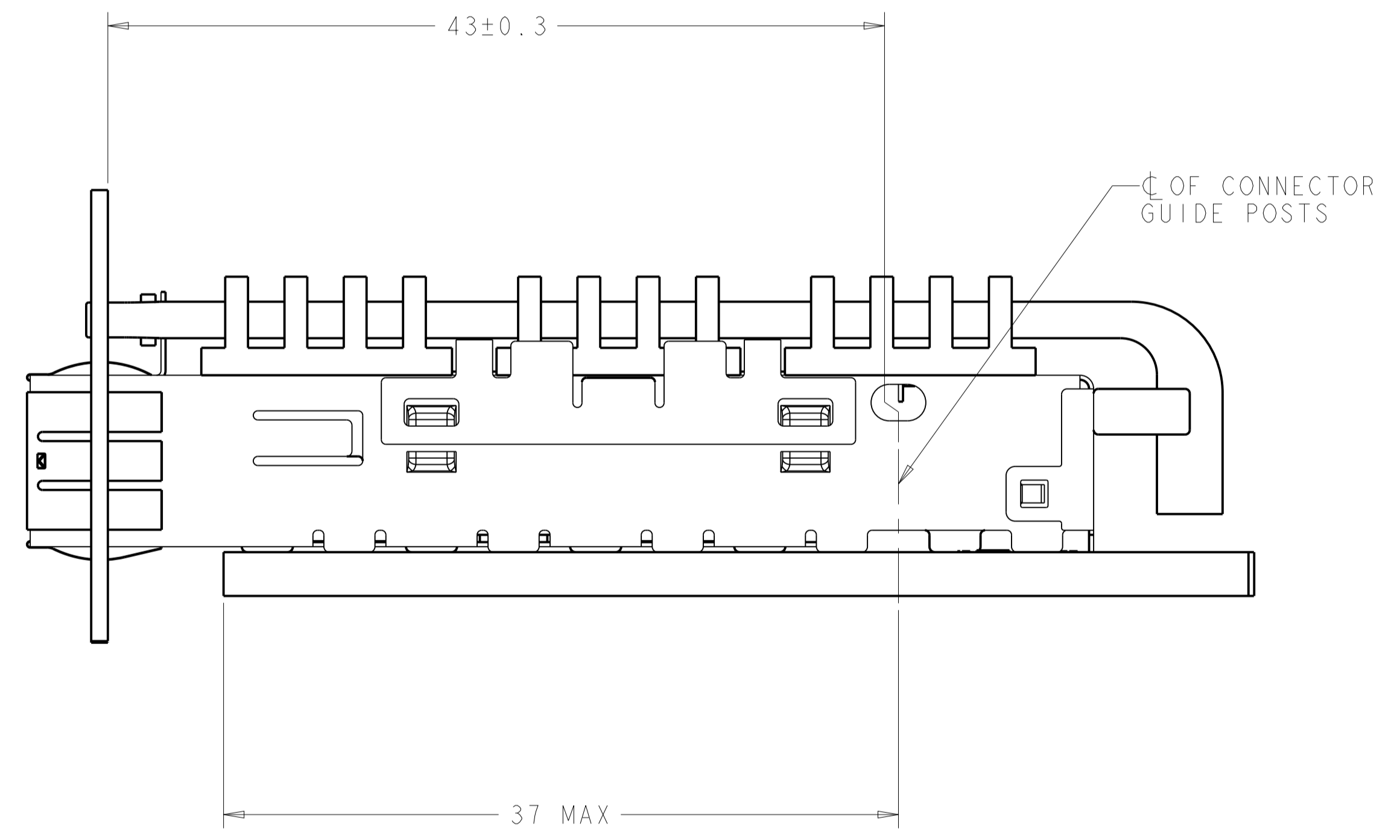
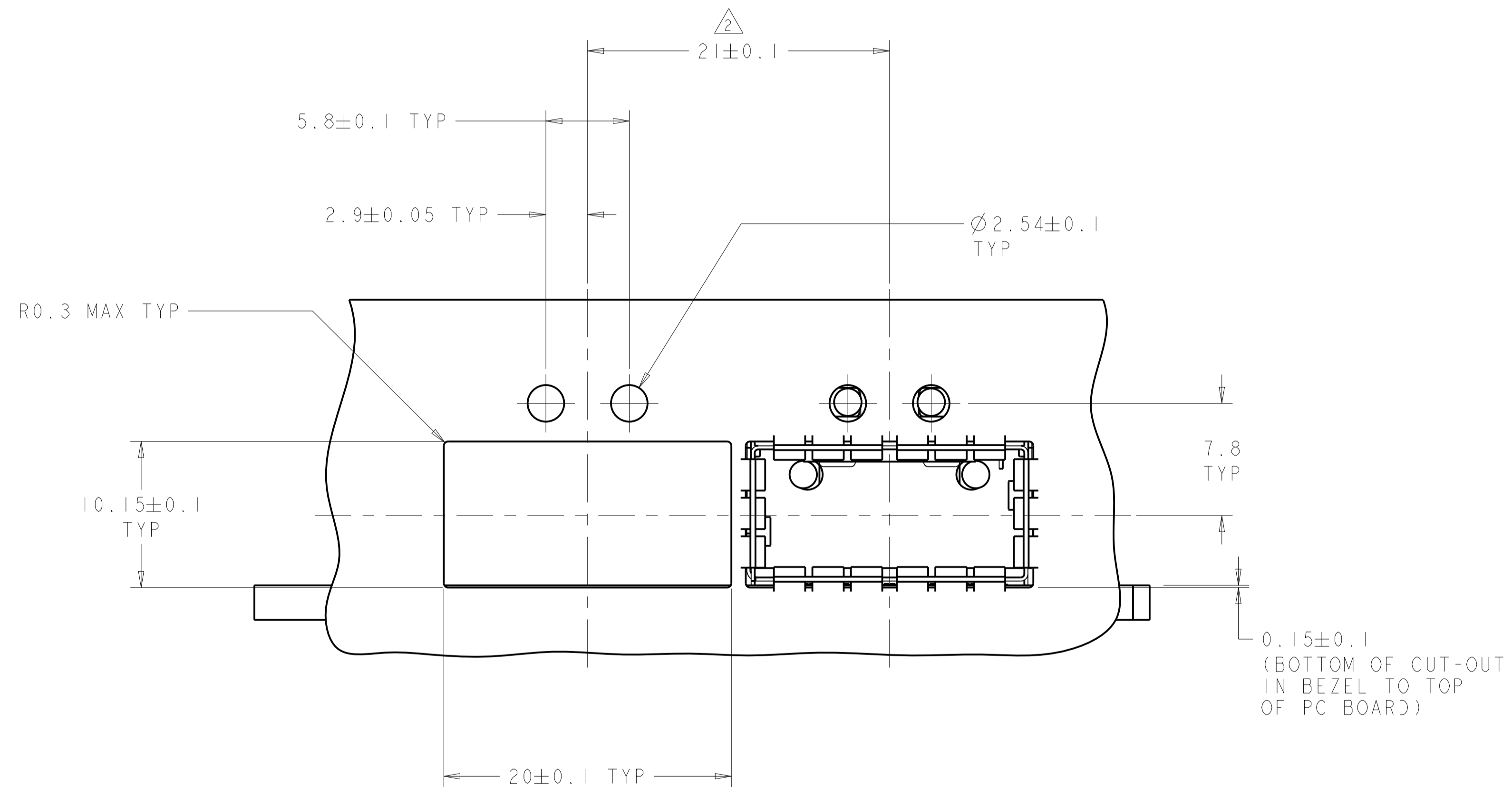
LOC		DIST		REVISONS			
GP	00	P	LTN	DESCRIPTION	DATE	DMN	APVD
		-		SEE SHEET 1	-	-	-



ISOMETRIC EXPLODED VIEW  
 SCALE 6:1

THIS DRAWING IS A CONTROLLED DOCUMENT.		DMN C. VALENTINE 22FEB2007	TE Connectivity
DIMENSIONS: mm		CHK E. BRIGHT 22FEB2007	
		APVD E. BRIGHT 22FEB2007	NAME CAGE ASSEMBLY, THRU BEZEL, QSFP, W/ HEAT SINK AND DOUBLE LIGHT PIPE
TOLERANCES UNLESS OTHERWISE SPECIFIED:		PRODUCT SPEC	SIZE 108-2286
0 PLC $\pm 0.13$		APPLICATION SPEC	RESTRICTED TO
1 PLC $\pm 0.13$		114-13217	A100779C=1888971
2 PLC $\pm 0.13$		WEIGHT	SCALE 4:1 SHEET 2 OF 4 REV A2
3 PLC $\pm 0.013$		Customer Drawing	
4 PLC $\pm 0.013$			
ANGLES $\pm 0.0001$			
FINISH			

LOC		DIST		REVISIONS			
P	LTN	DESCRIPTION	DATE	DMN	APVD		
-	-	SEE SHEET 1	-	-	-		

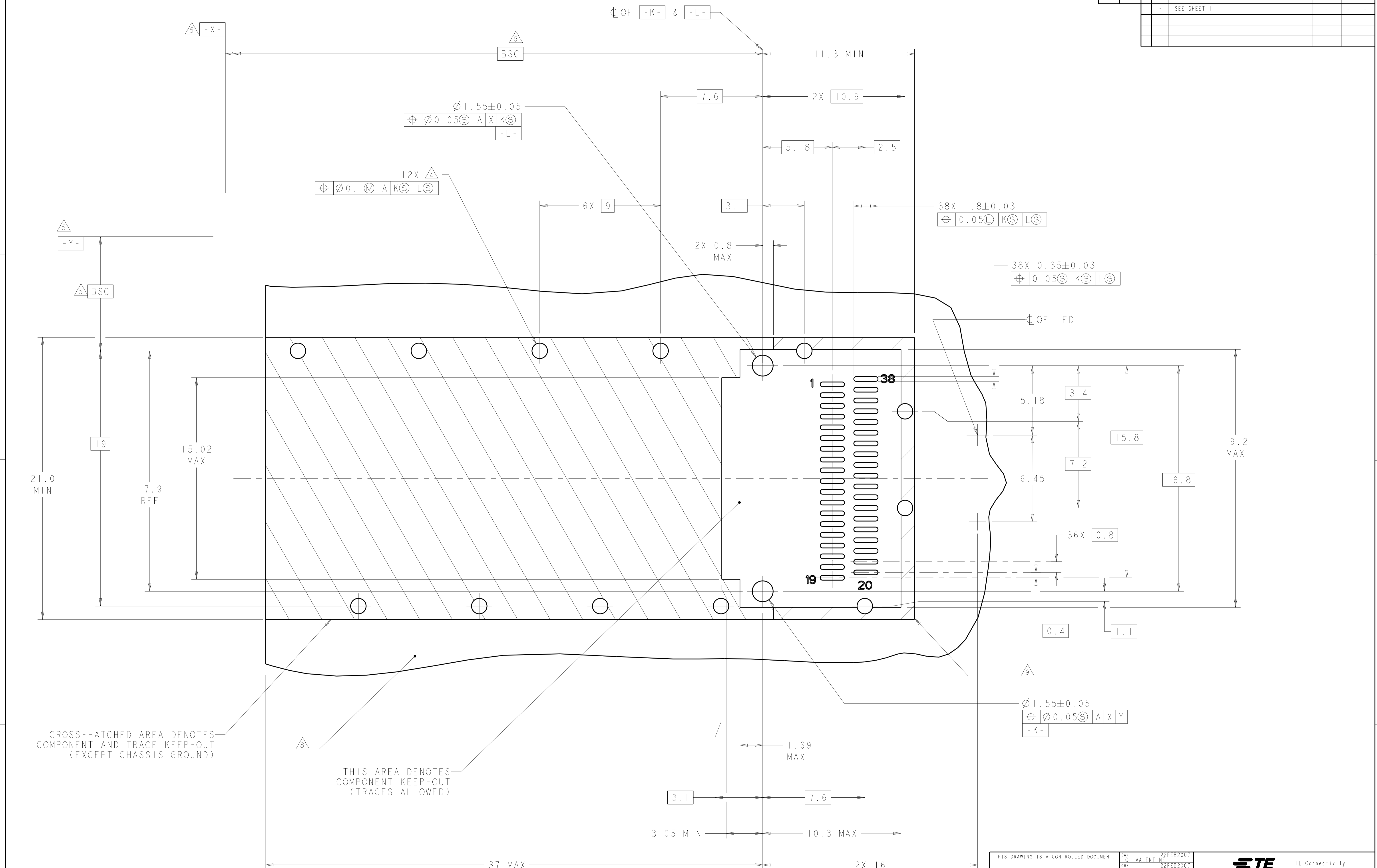


THIS DRAWING IS A CONTROLLED DOCUMENT.		DMN C. VALENTINE 22FEB2007	TE Connectivity	
DIMENSIONS:		CHK E. BRIGHT 22FEB2007		
mm	TOLERANCES UNLESS OTHERWISE SPECIFIED:	APVD E. BRIGHT 22FEB2007	NAME CAGE ASSEMBLY, THRU BEZEL, QSFP, W/ HEAT SINK AND DOUBLE LIGHT PIPE	
	0 PLC $\pm 0.13$ 1 PLC $\pm 0.13$ 2 PLC $\pm 0.13$ 3 PLC $\pm 0.13$ 4 PLC $\pm 0.001$ ANGLES $\pm 0.0001$	PRODUCT SPEC 108-2286	SIZE A100779C=1888971	
MATERIAL	FINISH	APPLICATION SPEC 114-13217	RESTRICTED TO	
		WEIGHT	Customer Drawing	
		SCALE	SHEET 3 OF 4 REV A2	

LOC	DIST	REV	DATE	BY	APPV
GP	00				

REVISIONS			
REV	DATE	BY	APPV
-	-	-	-
-	-	-	-



CROSS-HATCHED AREA DENOTES COMPONENT AND TRACE KEEP-OUT (EXCEPT CHASSIS GROUND)

THIS AREA DENOTES COMPONENT KEEP-OUT (TRACES ALLOWED)

RECOMMENDED PC BOARD LAYOUT  
 SCALE 8:1

THIS DRAWING IS A CONTROLLED DOCUMENT.		OWN: C. VALENTINE 22FEB2007	TE Connectivity
DIMENSIONS: mm		CHK: E. BRIGHT 22FEB2007	
TOLERANCES UNLESS OTHERWISE SPECIFIED:		APPV: E. BRIGHT 22FEB2007	NAME: CAGE ASSEMBLY, THRU BEZEL, QSFPP, W/ HEAT SINK AND DOUBLE LIGHT PIPE
0 PLC	±0.13	PRODUCT SPEC	108-2286
2 PLC	±0.13	APPLICATION SPEC	114-13217
3 PLC	±0.013	WEIGHT	A100779C=1888971
4 PLC	±0.013	Customer Drawing	SCALE 4:1 SHEET 4 OF 4 REV A2
ANGLES	±0.0001		
FINISH			