

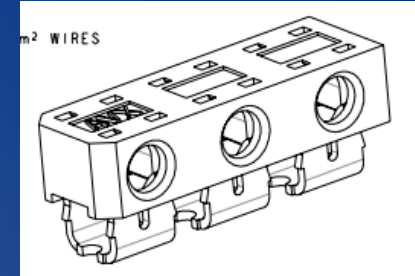
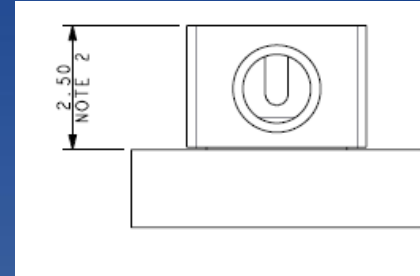
# Low profile IDC: 2.5mm Height

## ■ New Family of IDC WTB

- 1p to 4p
- 22-26AWG
  - 28 AWG possible with new insulator

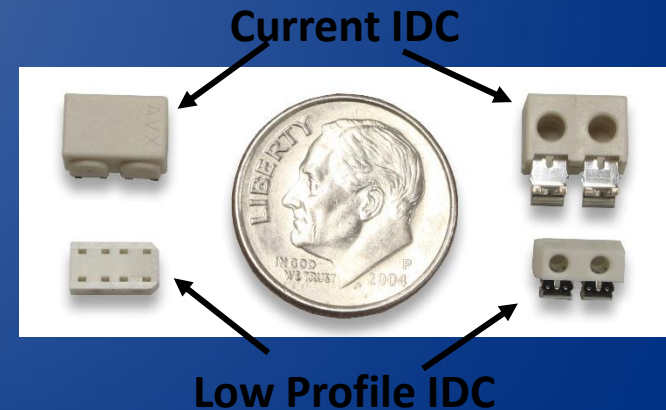
## ■ Key Features

- High reliability Phosphor Bronze material
- Traditional cold welded/gas tight connection
- Can be potted or over molded
- Integral cover for flat rock assembly
- 1.0mm height reduction
- 70% volume reduction



### Status

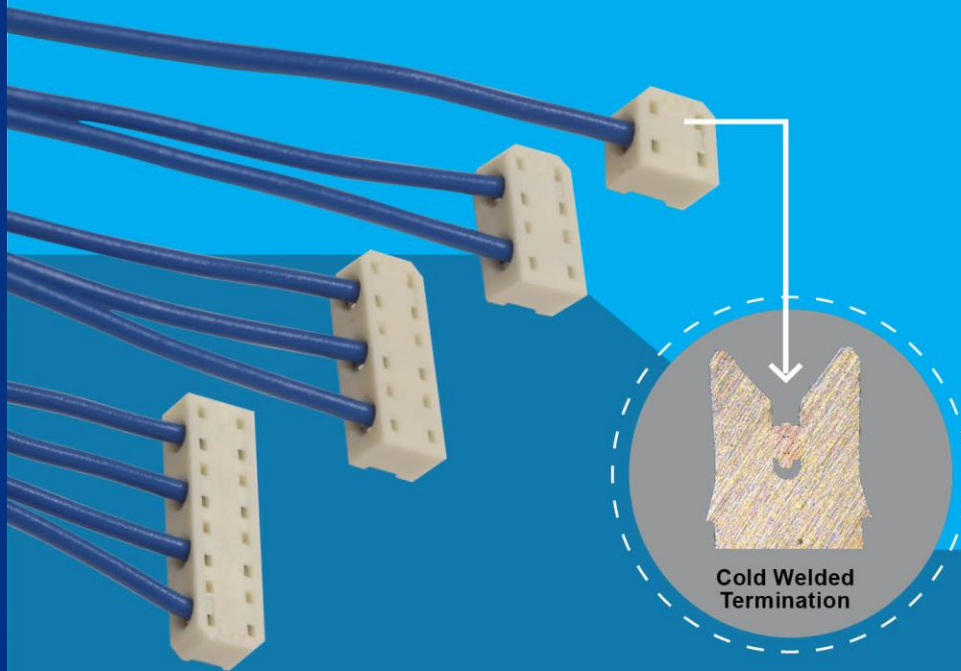
- Sampling Now
- UL in process



**Competition: None**

# New 9176-800 Launch

## Wire-to-Board



### **Low Profile IDC: Series 9176**

- 2.55mm "Z" axis height
- 70% volume reduction
- Encapsulation friendly
- Gas tight interface