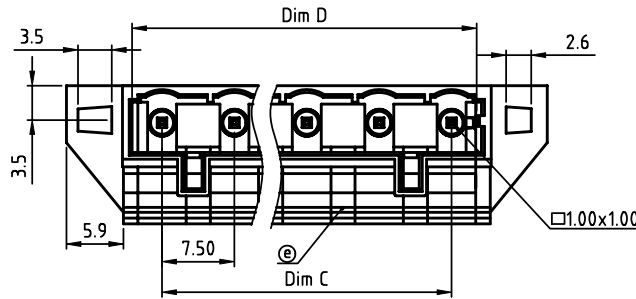


PRODUCT NUMBER	PITCH
NBxxA0x300J0G	7.50 mm

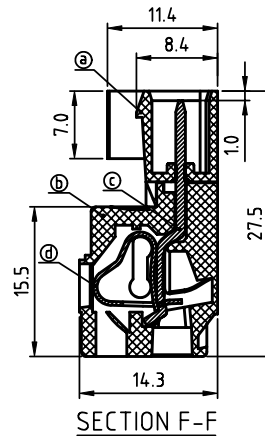
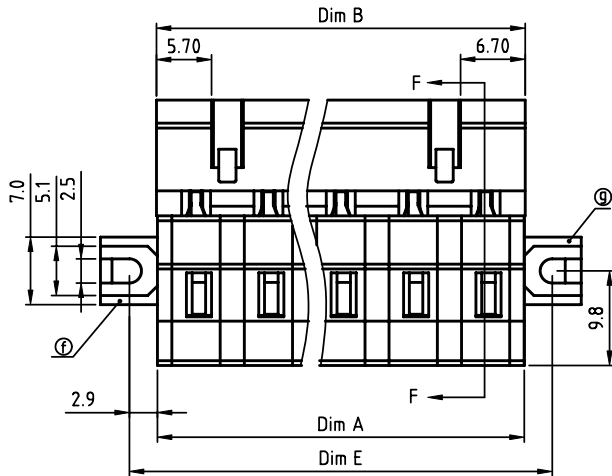
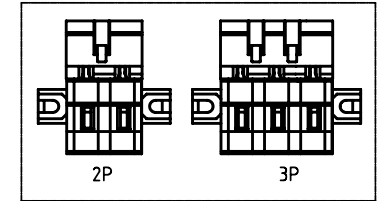


N=Number of poles
 Dim A=Nx7.5+0.5
 Dim B=Nx7.5+0.7
 Dim C=(N-1)x7.5
 Dim D=(N-1)x7.5+5.7
 Dim E=Nx7.5+6.3

POLES	Dim A	Dim B	Dim C	Dim D	Dim E
2-6p	±0.20	±0.20	±0.10	±0.20	±0.10
7-12p	±0.30	±0.30	±0.20	±0.30	±0.20
13-16p	±0.40	±0.40	±0.30	±0.40	±0.30

PART NO.: NB xx A 0 x 3 00J0 G

Solid block	0	Color	0	Black (RAL9005)	RoHS compliant	0	Black (RAL9005)
No. of poles	2		2	Red (RAL3001/D)	(lead<4%)	1	Red (RAL3001/D)
02 2 poles			3	Orange(RAL2011/P)	In copper Alloy	2	Orange(RAL2011/P)
03 3 poles			4	Yellow(RAL1018/A)		3	Yellow(RAL1018/A)
...			5	Green(RAL6018/T)		4	Green(RAL6018/T)
16 16 poles			6	Blue (RAL5015/A)		5	Blue (RAL5015/A)
			8	Grey(RAL7035/D)		6	Grey(RAL7035/D)
			9	White(RAL1102)		7	White(RAL1102)
			C	Green(RAL6018/U)		8	Green(RAL6018/U)

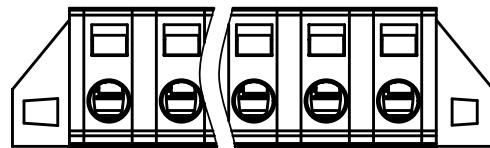


Material:

- Item①Top body: Thermoplastic (UL94 V-0)
- Item②Bottom body: Thermoplastic (UL94 V-0)
- Item③Male contact pin: Brass Tin plated
- Item④Spring clamp: Stainless steel
- Item⑤Pad board: Thermoplastic (UL94V-0)
- Item⑥Terminal left cover: Thermoplastic (UL94V-0)
- Item⑦Terminal right cover: Thermoplastic (UL94V-0)

Electrical cULus

- Voltage rating: 300V
- Current rating: 8A
- Wire range:
- Solid wire(AWG): 12-28
- Stranded wire(AWG): 12-28
- Wire strip length: 8-9mm
- Withstanding Voltage: 1.6KV
- Operating temperature: -40°C to +115°C
- Safety Approval:



mat'l. code		surface ASME Y14.5	tolerance ASME Y14.5	projection MM	product family TERMINAL BLOCK
ltr	ecn no	dr	date		title TERMINAL BLOCK SPRING CLAMP, PLUGGABLE PLUG, MALE CONNECTOR W/FLANGE, 100% PROTECTED AGAINST MISMATING
				scale	dwg no
					sheet 1 of 1 size
					NBxxA0x300J0G
					A4
					type
					CUSTOMER Drawing
sheet index	revision	A			
	sheet	1			