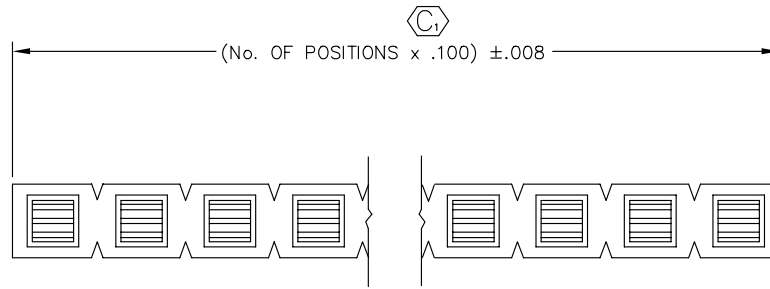


NOTES:

1. PUSHOUT FORCE TO BE 20 OZ. MIN.
2. IN RIGHT ANGLE VERSION LOGO SIDE OF HEADER SHOULD BE LOCATED OPPOSITE RIGHT ANGLE TAIL AND CARRIER SIDE OF CONTACT AS SHOWN.
3. (C) REPRESENTS CRITICAL DIMENSION.

DIMENSIONS ARE IN INCHES		UNLESS OTHERWISE NOTED		TOLERANCES ARE:		TITLE:	DWG NO:
ONE PLACE DECIMALS ±	TWO PLACE DECIMALS ±	THREE PLACE DECIMALS ± .005	FOUR PLACE DECIMALS ±	ANGLES ± 2°		STAMPED CONTACT STRIP ASSEMBLY	SSK-1XX-S-X-XX
							SHEET 1 OF 1



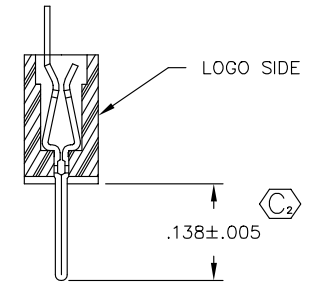
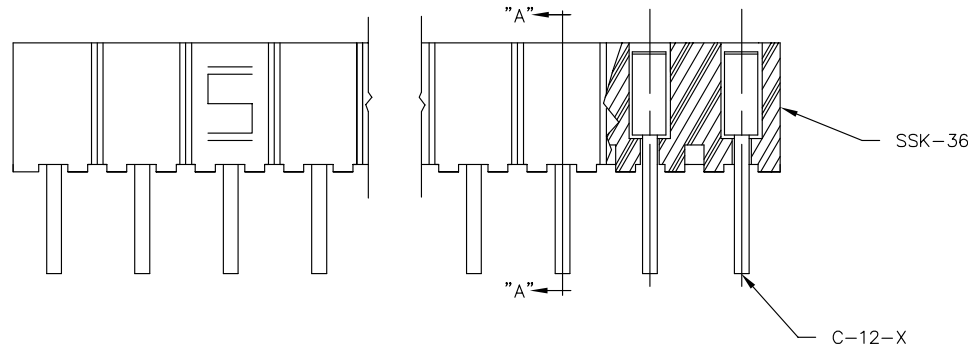
POSITION SPECIFICATION  
36 POSITIONS MAX

TERMINATION  
-S SOLDER

OPTION  
RA: SEE TABLE 1

PLATING SPECIFICATION  
-G: GOLD - USE C-12-G  
-T: TIN - USE C-12-T

SSK-1XX-S-X-XX



SECTION "A-A"  
(ALSO IN-PROCESS FOR -RA OPTION)

TABLE 1

OPTIONS (SEE NOTE 2)	
-RA RIGHT ANGLE	

Do not scale  
from this print

**PROPRIETARY NOTE**  
THIS DOCUMENT CONTAINS INFORMATION CONFIDENTIAL AND PROPRIETARY TO SAMTEC INC. AND SHALL NOT BE REPRODUCED OR TRANSFERRED TO OTHER DOCUMENTS OR DISCLOSED TO OTHERS OR USED FOR ANY PURPOSE OTHER THAN THAT FOR WHICH IT WAS OBTAINED WITHOUT THE EXPRESSED WRITTEN CONSENT OF SAMTEC INC.

<b>samtec</b>		MISC\MKTG SSK-MKT
520 PARK EAST BLVD. NEW ALBANY, INDIANA 47150 PHONE (812) 944-6733 P.O. BOX 1147 CODE 55322		
MADE BY: PURVIS 7-2-84	ENG. APPROVAL	SSK-1XX-S-X-XX
CHECKED BY: TM HAHN		SHEET 1 OF 1