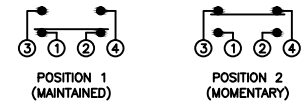


OBSOLETE
 May 2016
 PCR 22230

SCHEMATIC



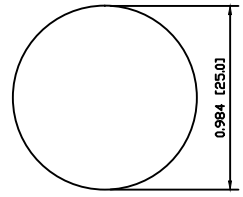
SPECIFICATIONS

FUNCTION:
 1PNO OFF-(ON) + 1PNC ON-(OFF)
RATING:
 20mA 12VDC
CONTACT RESISTANCE:
 Initial: 50mΩ Max. at 1A 12VDC
INSULATION RESISTANCE:
 1,000MΩ Min. at 500VDC
DIELECTRIC STRENGTH:
 2,000VAC Min. for 1 Minute
ELECTRICAL LIFE:
 50,000 Cycles
MECHANICAL LIFE:
 1,000,000 Cycles
TEMPERATURE:
 Operating: -20°C to 70°C
INGRESS PROTECTION:
 IP65
APPROVALS:
 RoHS
 COMPLIANT

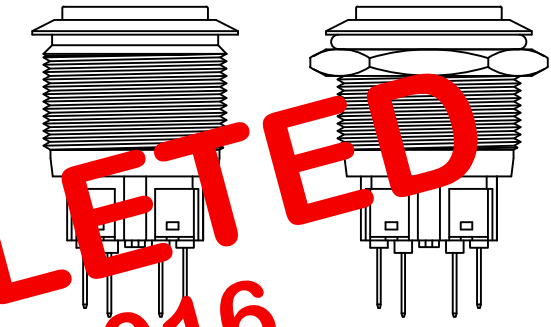
MATERIALS

BUSHING:
 Stainless Steel (304)
BASE:
 Polyamide 6/6 (PA66)
ACTUATOR:
 Stainless Steel (304)
 Polycarbonate (PC)
HARDWARE:
 Nickel Plated Brass (H59)
SEALING:
 Silicone Rubber
INNER ASSEMBLY:
 Polyamide 6/6 (PA66)
 Polycarbonate (PC)
 Polyoxymethylene (POM)
 Brass (H59)
 Stainless Steel
 Beryllium Copper
SPRING:
 Stainless Steel
CONTACTS:
 Gold Plated Silver/Cadmium Oxide (AgCdO)
TERMINALS:
 Gold Over Nickel Plated Brass
O-RING:
 Silicone Rubber
COLORS AND FINISH
BEZEL:
 Stainless Steel
 Machine Finish
ACTUATOR:
 Stainless Steel
 Machine Finish
ILLUMINATION:
 None
MARKING:
 None

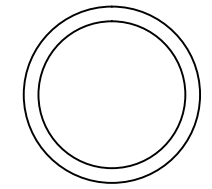
SUGGESTED PANEL CUTOUT



MAXIMUM PANEL THICKNESS: 0.394 [10.0mm]



EXPLODED VIEW



ASSEMBLED VIEW

BODY	A	10/03/12	CAB
COLORS	A	09/07/08	CAB
MATERIALS	A	10/03/12	CAB
SPECIFICATIONS	A	10/03/12	CAB
REFERENCE	REV.	DATE	BY

THE INFORMATION CONTAINED IN THIS DOCUMENT IS PROPRIETARY TO E-SWITCH AND IS NOT TO BE COPIED OR TRANSFERRED

B	CORRECTED FUNCTION	18938	10/03/17	CAB
A	INITIAL RELEASE	18911	10/03/12	CAB
REV.	DESCRIPTION	PCR	DATE	DRAWN BY

DIMENSIONS	
INCHES [MILLIMETERS]	
GENERAL TOLERANCES	±0.008 [±0.2] / ±1°
SCALE	DRAWING NOT TO SCALE
PROJECTION	

TITLE	
PV8H2Y0SSG	
ITEM NUMBER	DATE
52-PV8H2Y0SSG	MARCH 17, 2010
REVISION	B