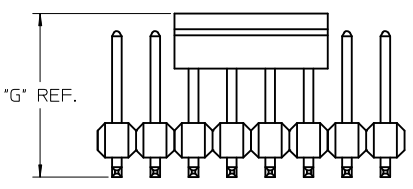
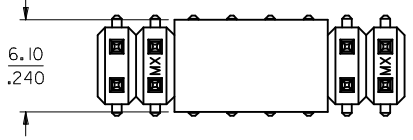
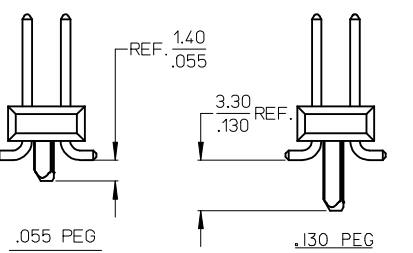


OPTIONAL
PICK AND PLACE CAP



PICK AND PLACE
CAP AVAILABLE
SEE NOTES 4 & 9

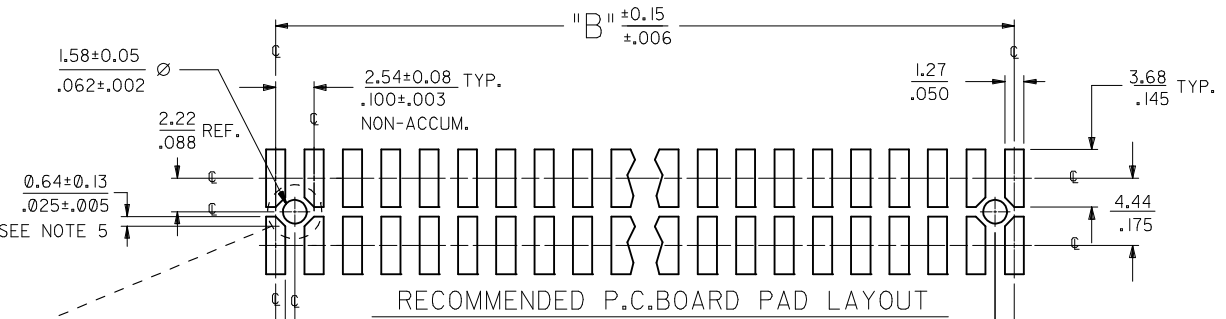


PEG OPTIONS

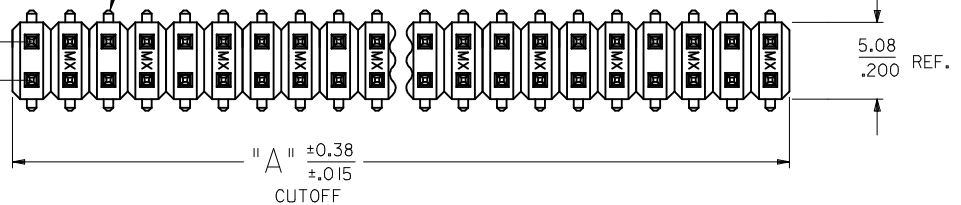
DIM "M"	DIM "G"
6.10 .240	10.67 .420
8.13 .320	12.70 .500



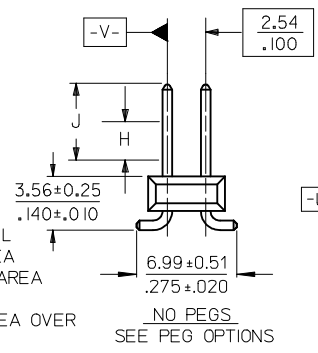
P.C. BOARD PAD LAYOUT
AT ENDS FOR NO PEG VERSION.



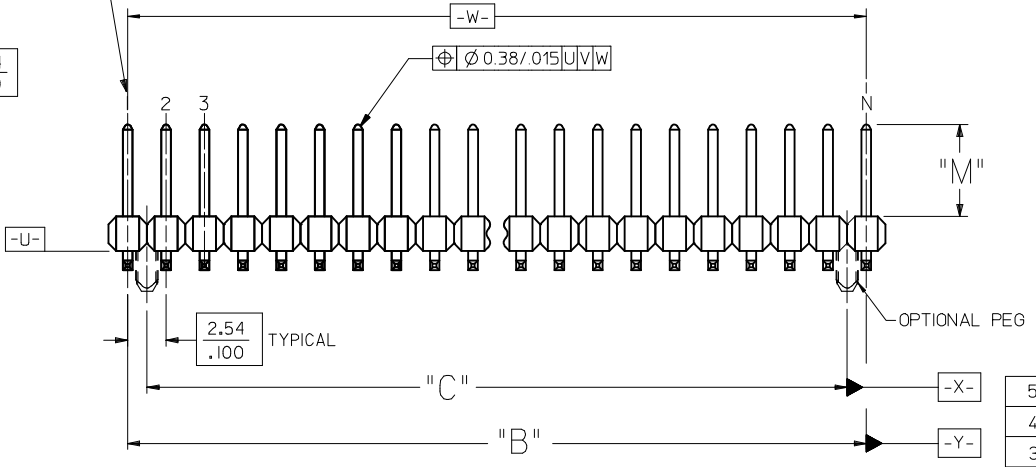
ROW "A"
ROW "B"



USED TO LOCATE VOIDED CIRCUITS



NO PEGS
SEE PEG OPTIONS



5	G3
4	G3
3	G3
2	G3
1	G4
	SHT. REF.

NOTES:

- MATERIALS: INSULATOR: GLASS FILLED LIQUID CRYSTAL POLYMER (LCP), UL94 V-0, COLOR: BLACK
TERMINAL: COPPER ALLOY
- FINISH:
TIN - 0.00381/0.00150 MINIMUM TIN OVER NICKEL OVER ALL
15 GOLD - 0.00038/0.00015 MINIMUM GOLD IN SELECT AREA OVER 0.00191/0.00075 MINIMUM TIN IN SELECT AREA OVER NICKEL OVERALL
30 GOLD - 0.00076/0.00030 MINIMUM GOLD IN SELECT AREA OVER 0.00191/0.00075 MINIMUM TIN IN SELECT AREA OVER NICKEL OVERALL.
50 GOLD - 0.00127/0.00050 MINIMUM GOLD IN SELECT AREA OVER 0.00254/0.00100 MINIMUM TIN IN SELECT AREA OVER NICKEL OVERALL.
- PART TO CONFORM TO PS-71308
- PACKAGING (SEE CHARTS):
BULK: PER PK-70873-0353.
TUBES: PER PK-70873-0041.
TUBES W/ VAC CAPS: PER PK-70873-0691.
TAPE AND REEL W/ VAC CAPS: PER PK-70873-0805.
SEE SHEET 3 FOR TAPE & REEL PRODUCT WITH SHALLOW POCKET REQUIREMENTS.
- TYP. DIMENSIONS FOR LANDS SURROUNDING HOLES FOR RETENTION PEGS.
- PIN SOLDERABILITY PER MOLEX SPEC. ES-152.
- SEE SHEETS 2-5 FOR CHARTED DIMS., PART/EDP NO'S, AND VOIDED CIRCUITS.
- PIN PUSHOUT FORCE: 3 POUNDS MINIMUM.
- PICK-N-PLACE CAPS WILL BE PLACED SO THAT VACUUM PICK UP AREA WILL BE IN CENTER OF PART.
- THIS PART CONFORMS TO CLASS B REQUIREMENTS OF COSMETIC SPECIFICATION PS-45499-002.

CORRECT PIN MAT. EC NO: UCP2009-2631 DRAWN:TBRENS 2009/06/04 CHKD:HKJPPER 2009/06/10 APPR:FSMITH 2009/06/12 G4 REV	QUALITY SYMBOLS ▽=0 ▽=0	GENERAL TOLERANCES (UNLESS SPECIFIED) <table border="1"> <thead> <tr> <th></th> <th>mm</th> <th>INCH</th> </tr> </thead> <tbody> <tr> <td>4 PLACES ±</td> <td>---</td> <td>±---</td> </tr> <tr> <td>3 PLACES ±</td> <td>---</td> <td>±.005</td> </tr> <tr> <td>2 PLACES ±</td> <td>0.13</td> <td>±.010</td> </tr> <tr> <td>1 PLACE ±</td> <td>0.25</td> <td>±---</td> </tr> </tbody> </table> ANGULAR ±1/2°		mm	INCH	4 PLACES ±	---	±---	3 PLACES ±	---	±.005	2 PLACES ±	0.13	±.010	1 PLACE ±	0.25	±---	DIMENSION STYLE MM/IN DRAWN BY RKA DATE 04/07/19 CHECKED BY BBARKER DATE 04/07/19 APPROVED BY SMILLER DATE 04/07/19	SCALE 4:1 DESIGN UNITS INCH THIRD ANGLE PROJECTION	TITLE SALES ASSY INSULATOR DUAL ROW SMT W/BREAK-OFF .025SQ PIN GULLWING .100 MOLEX INCORPORATED DOCUMENT NO. SD-71308-002 SHEET NO. 1 OF 5
		mm	INCH																	
	4 PLACES ±	---	±---																	
	3 PLACES ±	---	±.005																	
2 PLACES ±	0.13	±.010																		
1 PLACE ±	0.25	±---																		
DRAFT WHERE APPLICABLE MUST REMAIN WITHIN DIMENSIONS		SEE CHARTS	THIS DRAWING CONTAINS INFORMATION THAT IS PROPRIETARY TO MOLEX INCORPORATED AND SHOULD NOT BE USED WITHOUT WRITTEN PERMISSION																	

13		12		11		10		9		8		7		6		5		4		3		2		1				
J		PACKAGING SEE NOTE 4 SHT 1		4-6 CKT		BULK		TAPE-N-REEL W/ VAC CAPS		N/A		BULK		TAPE-N-REEL W/ VAC CAPS		N/A		BULK		TAPE-N-REEL W/ VAC CAPS		N/A		BULK		BULK		
				8-100 CKT		TUBES		TAPE-N-REEL W/ VAC CAPS		TUBES W/ VAC CAPS		TUBES		TAPE-N-REEL W/ VAC CAPS		TUBES W/ VAC CAPS		TUBES		TAPE-N-REEL W/ VAC CAPS		TUBES W/ VAC CAPS		TUBES		TUBES		
		DIM. M±0.25 MM				6.10 (.240)				6.10 (.240)				6.10 (.240)				8.13 (.320)				8.13 (.320)						
		PLATING				TIN				15 GOLD				30 GOLD				15 GOLD				30 GOLD						
		DIM. H				2.54 (.100)				2.54 (.100)				2.54 (.100)				4.57 (.180)				4.57 (.180)						
DIM. J				5.08 (.200)				5.08 (.200)				5.08 (.200)				7.11 (.280)				7.11 (.280)								
I	CKTS	DIM. A		DIM. B		EDP NUMBER	EDP NUMBER	EDP NUMBER	EDP NUMBER	EDP NUMBER	EDP NUMBER	EDP NUMBER	EDP NUMBER	EDP NUMBER	EDP NUMBER	EDP NUMBER	EDP NUMBER	EDP NUMBER	EDP NUMBER	EDP NUMBER	EDP NUMBER	EDP NUMBER	EDP NUMBER	EDP NUMBER	EDP NUMBER	EDP NUMBER	CKTS	
		MM	IN	MM	IN																							
	04	5.08	.200	2.54	.100																							04
	06	7.62	.300	5.08	.200	71308-9060										71308-9061												06
	08	10.16	.400	7.62	.300	71308-9080																						08
	10	12.70	.500	10.16	.400	71308-3210										71308-3110												10
	12	15.24	.600	12.70	.500																							12
	14	17.78	.700	15.24	.600	71308-3214				71308-9140						71308-9147												14
	16	20.32	.800	17.78	.700																							16
	18	22.86	.900	20.32	.800																							18
	20	25.40	1.000	22.86	.900					71308-9200																		20
	22	27.94	1.100	25.40	1.000																							22
	24	30.48	1.200	27.94	1.100																							24
	26	33.02	1.300	30.48	1.200																							26
	28	35.56	1.400	33.02	1.300																							28
	30	38.10	1.500	35.56	1.400																							30
	32	40.64	1.600	38.10	1.500																							32
	34	43.18	1.700	40.64	1.600																							34
	36	45.72	1.800	43.18	1.700																							36
	38	48.26	1.900	45.72	1.800																							38
	40	50.80	2.000	48.26	1.900																							40
	42	53.34	2.100	50.80	2.000																							42
	44	55.88	2.200	53.34	2.100																							44
	46	58.42	2.300	55.88	2.200																							46
	48	60.96	2.400	58.42	2.300																							48
	50	63.50	2.500	60.96	2.400																							50
	52	66.04	2.600	63.50	2.500																							52
	54	68.58	2.700	66.04	2.600																							54
	56	71.12	2.800	68.58	2.700																							56
	58	73.66	2.900	71.12	2.800																							58
	60	76.20	3.000	73.66	2.900																							60
	62	78.74	3.100	76.20	3.000																							62
	64	81.28	3.200	78.74	3.100																							64
	66	83.82	3.300	81.28	3.200																							66
	68	86.36	3.400	83.82	3.300																							68
	70	88.90	3.500	86.36	3.400																							70
	72	91.44	3.600	88.90	3.500																							72
	74	93.98	3.700	91.44	3.600																							74
	76	96.52	3.800	93.98	3.700																							76
	78	99.06	3.900	96.52	3.800																							78
	80	101.60	4.000	99.06	3.900																							80
	82	104.14	4.100	101.60	4.000																							82
	84	106.68	4.200	104.14	4.100																							84
	86	109.22	4.300	106.68	4.200																							86
	88	111.76	4.400	109.22	4.300																							88
	90	114.30	4.500	111.76	4.400																							90
	92	116.84	4.600	114.30	4.500																							92
	94	119.38	4.700	116.84	4.600																							94
	96	121.92	4.800	119.38	4.700																							96
	98	124.46	4.900	121.92	4.800																							98
	100	127.00	5.000	124.46	4.900																							100

NO PEG VERSION
(SEE ALSO SHEET 3)

SEE SHEET 1 EC NO: UCP2009-0323 DRAWINGVERILL 2008/08/27 CHKD:HK/PPER 2008/08/26 APPR:FSM/LTH 2008/08/27 REV: G3	QUALITY SYMBOLS ▽=0 ▽=0	GENERAL TOLERANCES (UNLESS SPECIFIED) <table border="1"> <tr> <th></th> <th>mm</th> <th>INCH</th> </tr> <tr> <td>4 PLACES ±</td> <td>---</td> <td>---</td> </tr> <tr> <td>3 PLACES ±</td> <td>---</td> <td>±.005</td> </tr> <tr> <td>2 PLACES ±</td> <td>0.13</td> <td>±.010</td> </tr> <tr> <td>1 PLACE ±</td> <td>0.25</td> <td>±---</td> </tr> </table>		mm	INCH	4 PLACES ±	---	---	3 PLACES ±	---	±.005	2 PLACES ±	0.13	±.010	1 PLACE ±	0.25	±---	DIMENSION STYLE MM/IN DRAWN BY: RKA DATE: 04/07/19 CHECKED BY: BBARKER DATE: 04/07/19 APPROVED BY: SMILLER DATE: 04/07/19	SCALE: --- DESIGN UNITS: INCH THIRD ANGLE PROJECTION	TITLE: SALES ASSY INSULATOR DUAL ROW SMT W/BREAK-OFF .025SQ PIN GULLWING .100 MOLEX INCORPORATED	SHEET NO: 2 OF 5 DOCUMENT NO: SD-71308-002
		mm	INCH																		
	4 PLACES ±	---	---																		
	3 PLACES ±	---	±.005																		
	2 PLACES ±	0.13	±.010																		
1 PLACE ±	0.25	±---																			
DRAFT WHERE APPLICABLE MUST REMAIN WITHIN DIMENSIONS		SEE CHARTS	THIS DRAWING CONTAINS INFORMATION THAT IS PROPRIETARY TO MOLEX INCORPORATED AND SHOULD NOT BE USED WITHOUT WRITTEN PERMISSION																		