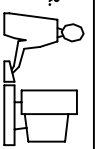
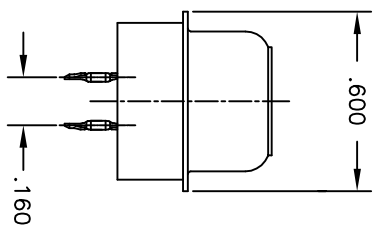
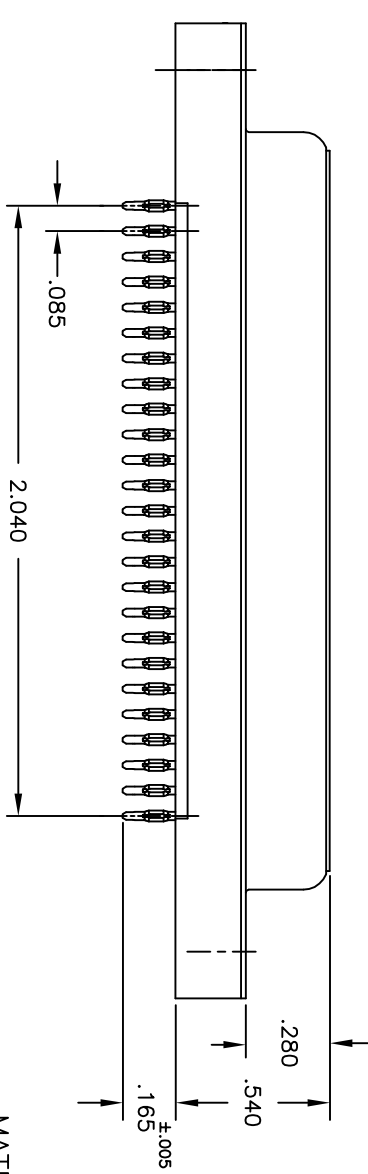
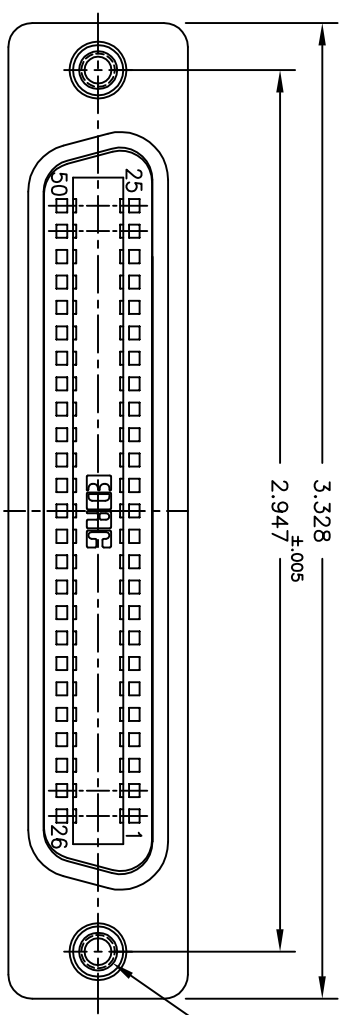


THIS IS A C.A.D. GENERATED DRAWING
DO NOT MAKE MANUAL REVISIONS TO MASTER.



ISSUE NUMBER

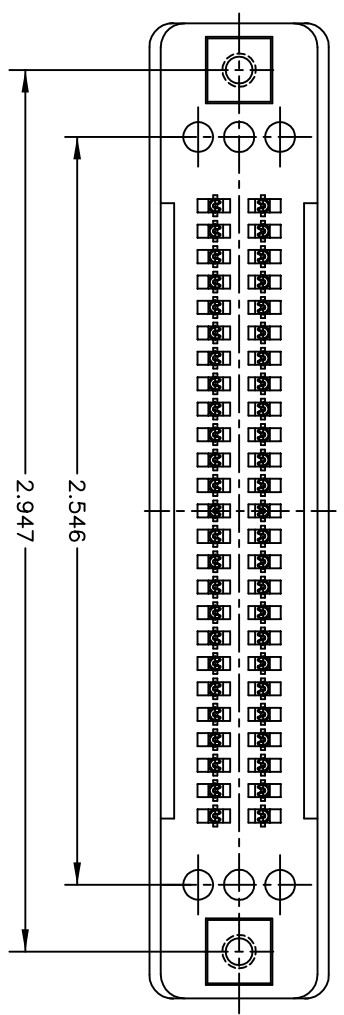
①	ORIGINAL
②	TAIL LENGTH WAS .175
③	P.Z 5/15/01
④	DIM. .160+ .005/- .000 WAS .170±.005 AND 3.328 WAS 3.262
⑤	F.BRIONES JUL.31/01
⑥	DIM. .165±.005 WAS .165-.005/- .000
⑦	F.BRIONES FEB.11/02
⑧	REF TO LEAD IN TIN/LEAD PLATING REMOVED.
⑨	REF TO LEAD IN TIN/LEAD PLATING REMOVED.
⑩	REF TO LEAD IN TIN/LEAD PLATING REMOVED.



MATERIALS:

- INSULATOR : THERMOPLASTIC POLYESTER COLOR BLUE
- SHELL: STEEL, NICKEL PLATED
- CONTACTS: PHOSPHOR BRONZE GOLD PLATED ON CONTACT AREA
TIN ON COMPLIANT SECTION OVER NICKEL
- THREADED INSERTS: BRASS, NICKEL PLATED

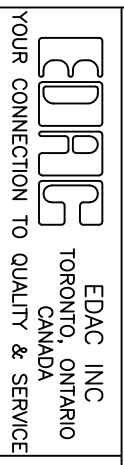
TO OBTAIN OPTIMUM COMPLIANT SECTION PERFORMANCE,
DRILL HOLES .038±.001 DIAMETER
COPPER PLATE, .001 MINIMUM THICKNESS FOLLOWED BY
TIN PLATE TO PROVIDE FINISHED HOLES .030/.035 DIAMETER



THIS PRODUCT CONFORMS TO THE EUROPEAN
UNION DIRECTIVES 2002/95/EC AND 2002/96/EC
FOR ROHS COMPLIANCY WITH EXEMPTION #11:
LEAD USED IN COMPLIANT PIN CONNECTOR SYSTEMS.

CONNECTOR PART NO. B57-050-220-202

**50 POSITION MINIATURE RIBBON RECEPTACLE
COMPLIANT PIN (PRESS FIT)**



THESE DRAWINGS AND SPECIFICATIONS
ARE THE PROPERTY OF EDAC INC. AND
SHALL NOT BE REPRODUCED OR COPIED
OR USED AS THE BASIS FOR THE
MANUFACTURE OR SALE OF APPARATUS
WITHOUT WRITTEN PERMISSION.

ACAD REFERENCE NO. B57-050-220-202	SCALE: IN C.A.D. 1:1	SHEET 1 OF 1	ISSUE
DRAWN: F.BRIONES	CHECKED:	DATE: AUG.28/00	DRAWING NUMBER
DATE:	DATE:		B57-050-220-202
			ISSUE
			10