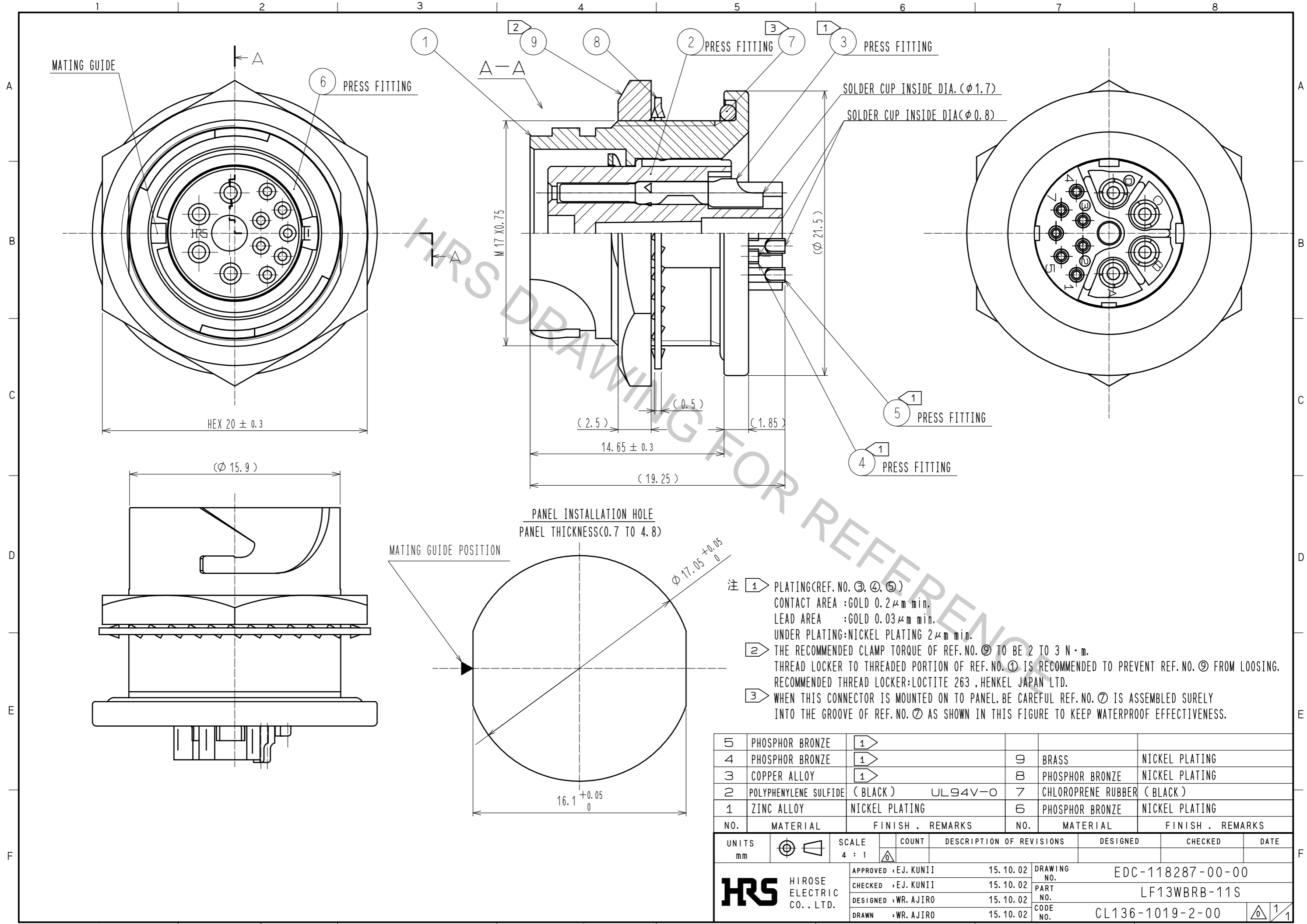


Aug.1.2018 Copyright 2018 HIROSE ELECTRIC CO., LTD. All Rights Reserved.
 In case that the application demands a high level of reliability, such as automotive,
 please contact a company representative for further information.



- 注 ① PLATING (REF. NO. ③, ④, ⑤)
 CONTACT AREA : GOLD 0.2 μ m min.
 LEAD AREA : GOLD 0.03 μ m min.
 UNDER PLATING : NICKEL PLATING 2 μ m min.
- ② THE RECOMMENDED CLAMP TORQUE OF REF. NO. ⑨ TO BE 2 TO 3 N · m.
 THREAD LOCKER TO THREADED PORTION OF REF. NO. ① IS RECOMMENDED TO PREVENT REF. NO. ⑨ FROM LOOSING.
 RECOMMENDED THREAD LOCKER : LOCTITE 263 , HENKEL JAPAN LTD.
- ③ WHEN THIS CONNECTOR IS MOUNTED ON TO PANEL, BE CAREFUL REF. NO. ⑦ IS ASSEMBLED SURELY INTO THE GROOVE OF REF. NO. ⑦ AS SHOWN IN THIS FIGURE TO KEEP WATERPROOF EFFECTIVENESS.

5	PHOSPHOR BRONZE	①			
4	PHOSPHOR BRONZE	①	9	BRASS	NICKEL PLATING
3	COPPER ALLOY	①	8	PHOSPHOR BRONZE	NICKEL PLATING
2	POLYPHENYLENE SULFIDE (BLACK)	UL94V-0	7	CHLOROPRENE RUBBER (BLACK)	
1	ZINC ALLOY	NICKEL PLATING	6	PHOSPHOR BRONZE	NICKEL PLATING
NO.	MATERIAL	FINISH . REMARKS	NO.	MATERIAL	FINISH . REMARKS

UNITS	ϕ	SCALE	COUNT	DESCRIPTION OF REVISIONS	DESIGNED	CHECKED	DATE
mm		4 : 1	△				
APPROVED : EJ. KUNII				15.10.02	DRAWING NO. EDC-118287-00-00		
CHECKED : EJ. KUNII				15.10.02	PART NO. LF13WBRB-11S		
DESIGNED : WR. AJIRO				15.10.02	CODE NO. CL136-1019-2-00		
DRAWN : WR. AJIRO				15.10.02	①/1		