

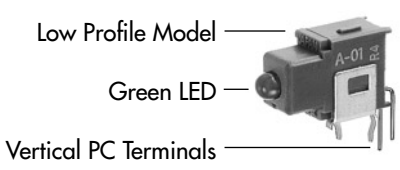
## TYPICAL INDICATOR ORDERING EXAMPLE



Models	
01	Low .079" (2.0mm) Profile
02	High .291" (7.4mm) Profile

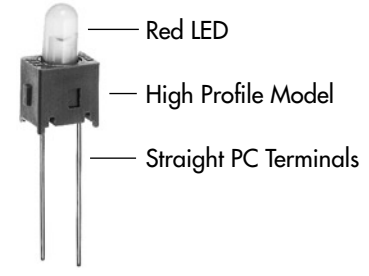
PC Terminals For 01 Model	
P	Straight
B	Straight with Bracket
H	Right Angle
V	Vertical
For 02 Model	
P	Straight

LED Colors	
C	Red
E	Yellow
F	Green



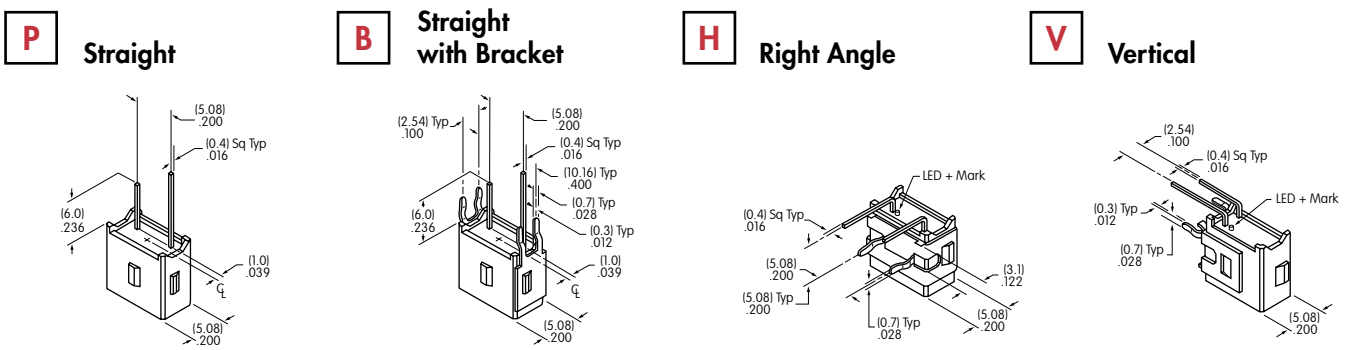
A01VF

DESCRIPTION FOR TYPICAL ORDERING EXAMPLES



A02PC

## PC TERMINALS



## LED COLORS & SPECIFICATIONS

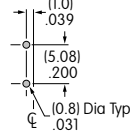
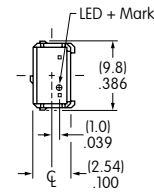
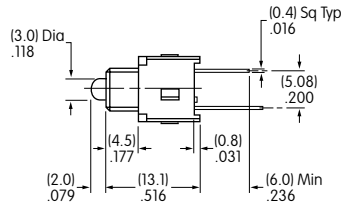
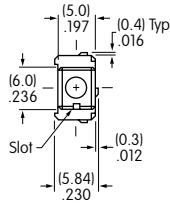
Models	A01 Indicator			A02 Indicator		
	C	E	F	C	E	F
LED is colored in OFF state	Red	Yellow	Green	Red	Yellow	Green
Forward Peak Current	$I_{FM}$ 50mA	50mA	50mA	25mA	30mA	30mA
Continuous Forward Current	$I_F$ 30mA	30mA	30mA	20mA	20mA	20mA
Forward Voltage	$V_F$ 1.7V	2.2V	2.1V	2.1V	2.1V	2.2V
Reverse Peak Voltage	$V_{RM}$ 4V	4V	4V	4V	4V	4V
Current Reduction Rate Above 25°C	$\Delta I_F$ 0.67mA/°C	0.67mA/°C	0.67mA/°C	0.33mA/°C	0.40mA/°C	0.40mA/°C
Ambient Temperature Range	-30°C ~ +85°C			-30°C ~ +85°C		

Electrical specifications are determined at a basic temperature of 25°C.  
 If the source voltage is greater than the LED's rated voltage, a ballast resistor must be connected in series with the LED.  
 The ballast resistor value can be calculated by using the formula shown in the Supplement section.

Toggles  
 Rockers  
 Pushbuttons  
 Illuminated PB  
 Programmable  
 Keylocks  
 Rotaries  
 Slides  
 Tactiles  
 Tilt  
 Touch  
 Indicators  
 Accessories  
 Supplement

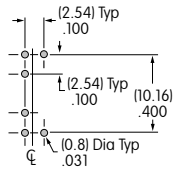
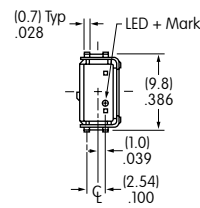
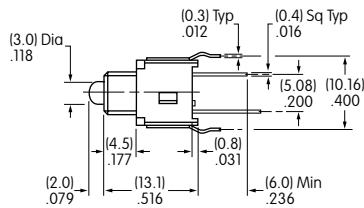
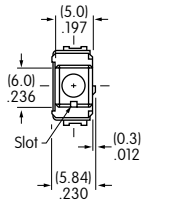
## TYPICAL INDICATOR DIMENSIONS

### Straight PC



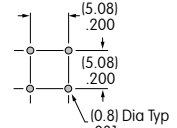
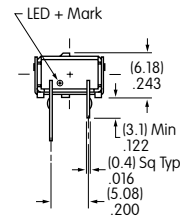
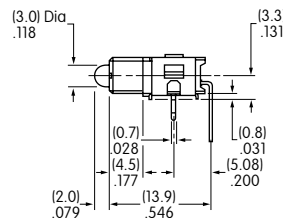
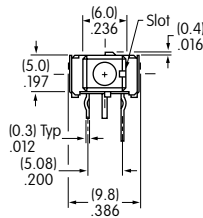
**A01PF**

### Straight PC • Bracket



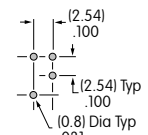
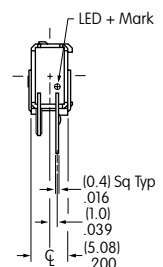
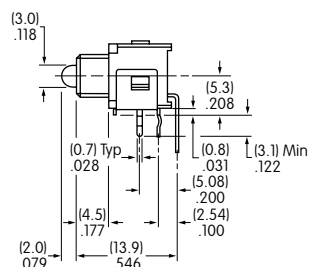
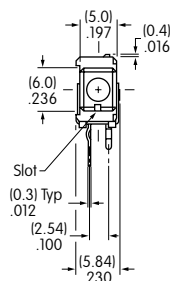
**A01BF**

### Right Angle PC



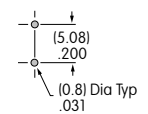
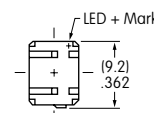
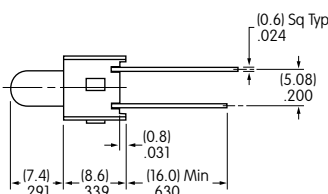
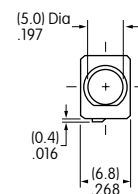
**A01HF**

### Vertical PC



**A01VF**

### Straight PC



**A02PF**

Toggles

Rockers

Pushbuttons

Programmable

Illuminated PB

Keylocks

Rotaries

Slides

Tactiles

Tilt

Touch

Indicators

Accessories

Supplement