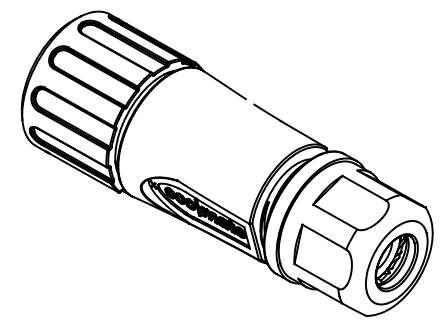
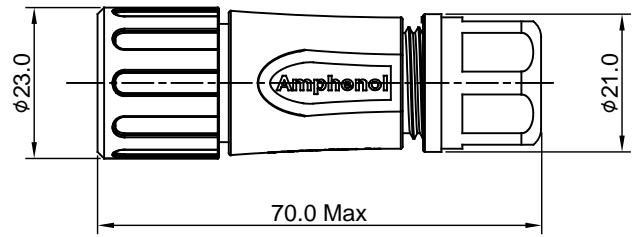
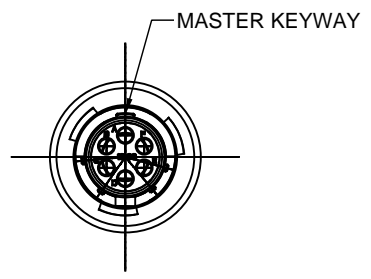
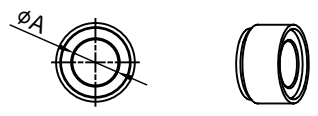
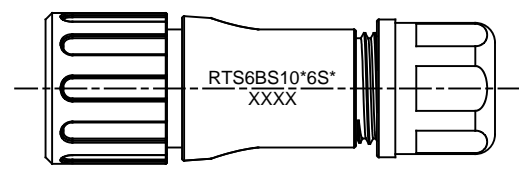


REVISIONS					
REV	ECO	DESCRIPTION	DATE	BY	APPR
A1	--	RELEASED DRAWING	Aug-10-2016	Ben	Tommy



- NOTES : (UNLESS OTHERWISE SPECIFIED)
- MATERIAL :
    - SHELL : THERMOPLASTIC , UL94 V-0.
    - INSERT : THERMOPLASTIC , UL94 V-0.
    - COUPLING NUT : THERMOPLASTIC , UL94 V-0.
    - O-RING : NBR/SILICONE RUBBER.
    - WAVE WASHER : STAINLESS STEEL.
    - BACK SHELL : THERMOPLASTIC , UL94 V-0.
    - CLAMP NUT : THERMOPLASTIC , UL94 V-0.
    - PLASTIC RING : THERMOPLASTIC , UL94 V-0.
    - RUBBER RING : NBR/SILICONE RUBBER.
  - SPECIFICATIONS :
    - RATED CURRENT :
      - 2.1.1 STAMPED CONTACT 5A (MAX).
      - 2.1.2 MACHINED CONTACT 7.5A (MAX).
    - RATED VOLTAGE : 250V(AC/DC).
    - OPERATING TEMPERATURE : SEE CHART .
    - DIELECTRIC WITHSTANDING VOLTAGE : LESS THAN 2 MILLIAMPS CURRENT LEAKAGE@1500 VOLTS AC.
    - INSULATION RESISTANCE : 5000 MEGOHMS MIN.
    - IP--CLASS : IP67.
    - MATING CYCLES DURABILITY : 500 CYCLES MIN.
    - RoHS COMPLIANT.
  - SUITABLE CONTACTS : 20# CONTACTS.
  - ALL DIMENSIONS ARE FOR REFERENCE USE ONLY.



DIMENSION $\phi A$	CABLE OD RANGE
7.0MM	4.0-6.5MM
8.8MM	5.0-8.8MM

KEY	PART NUMBER	
		-40°C ~ +105°C
N	RTS6BS10N6S	RTS6BS10N6S03

QUANTITY	PART NUMBER	DESCRIPTION	ITEM
<b>MATERIALS LIST</b>			
<small>UNLESS OTHERWISE SPECIFIED</small> 1) All dimensions are in metric(mm). 2) Tolerances are as follows: 1 PL DEC $\pm 0.30$   Fractions $\pm 1/64$ 2 PL DEC $\pm 0.15$   Angles $\pm 1'$ 3 PL DEC $\pm 0.08$ 3) Note reference =		<b>SIGNATURES</b> <b>DATE</b> DRAWN: Ben    Aug-10-2016 CHECKED: Tod    Aug-10-2016 ENGINEER: APPROVAL: Tommy    Aug-10-2016 CUSTOMER:	
<b>MATERIAL SPECIFICATIONS:</b>  <b>PROCESS SPECIFICATIONS:</b>  THIS DRAWING IS SUPPLIED FOR INFORMATION ONLY. DESIGN FEATURES, SPECIFICATIONS AND PERFORMANCE DATA SHOWN HEREON ARE THE PROPERTY OF THE AMPHENOL CORPORATION. NO RIGHTS OF REPRODUCTION ARE IMPLIED. ALL DIMENSIONS ARE SUBJECT TO NORMAL MANUFACTURING VARIATIONS.		<div style="text-align: center;">             Sine Systems - www.amphenol-sine.com            44724 Morley Drive            Clinton Township, MI 48036  <b>ECO-MATE, PLUG, BACK SHELL, SIZE 10,6POS, SOCKET.</b> </div>	
NEXT ASSY:		<b>SIZE</b> <b>TYPE</b> <b>DWG NO.</b> B    C-    RTS6BS10*6S*	<b>REVISION</b> A1
		<b>SCALE</b> <b>SHEET</b> <b>OF</b> NONE    1    1	

TITLE: ECO-MATE, PLUG, BACK SHELL, SIZE 10,6POS, SOCKET.    DWG NO.: RTS6BS10\*6S\*    REV: A1    SH: 1    OF: 1