

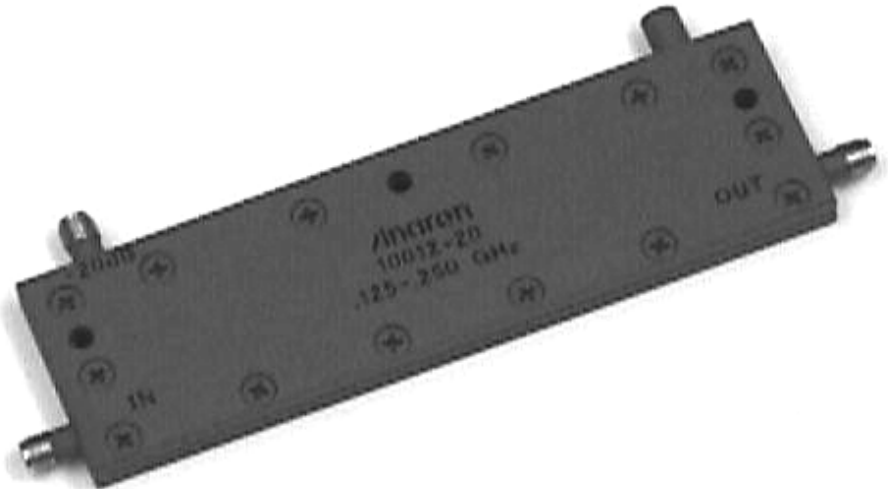
### Directional Couplers In-Line Style

#### Applications

- Subassemblies
- Lab Systems
- Leveling Loops
- Power Monitoring
- Test and Calibration

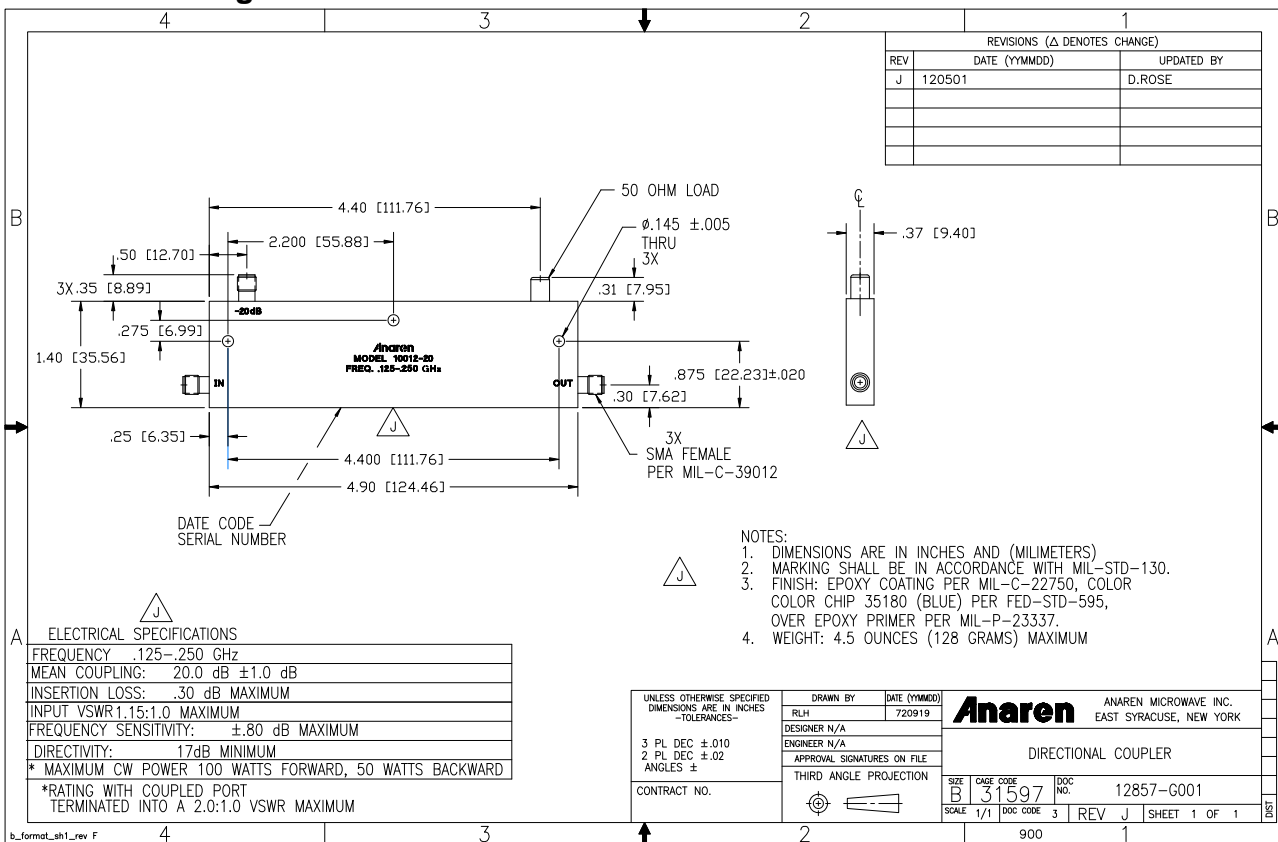
#### Features

- Military Grade
- 0.125 – 0.25 GHz
- In-Line Configuration
- Connectors Per MIL-C-39012
- Rugged Aluminum Housing
- Built in Termination
- Meets MIL-E-5400 Class 3 Requirements

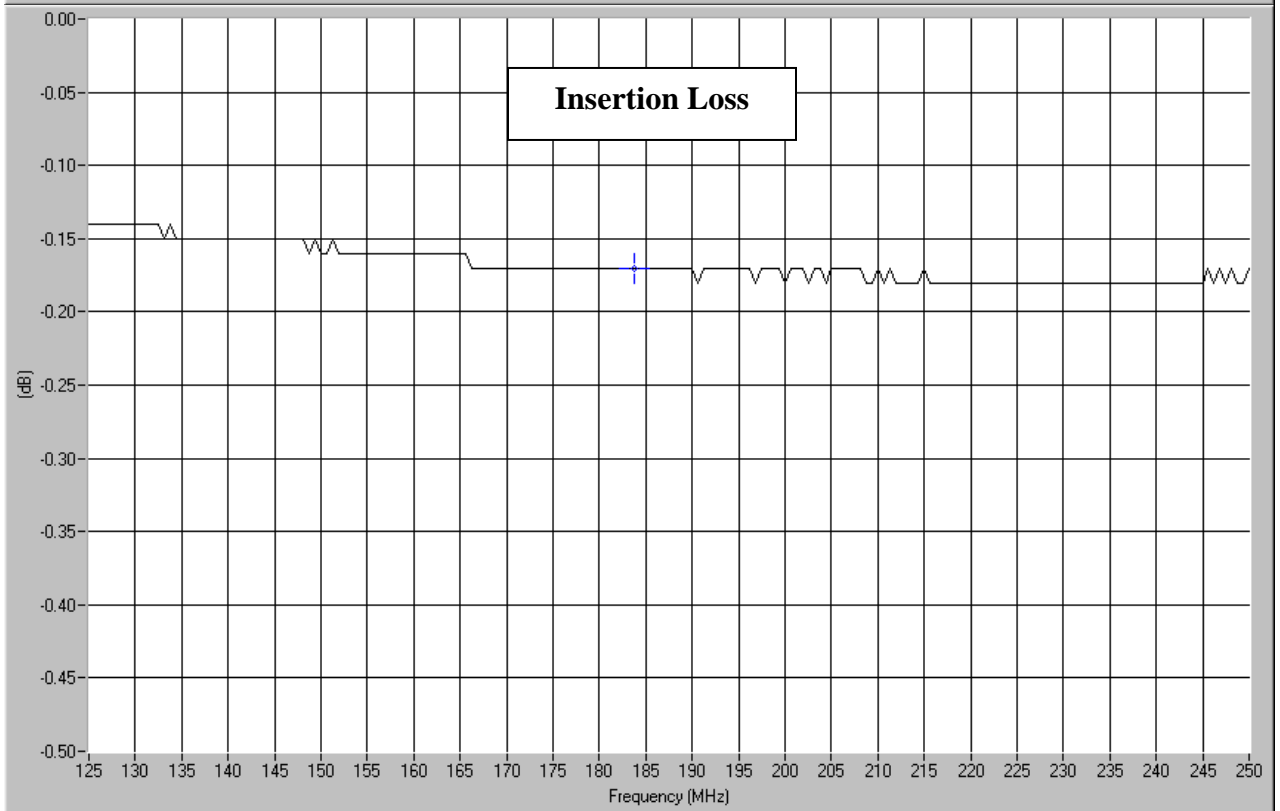
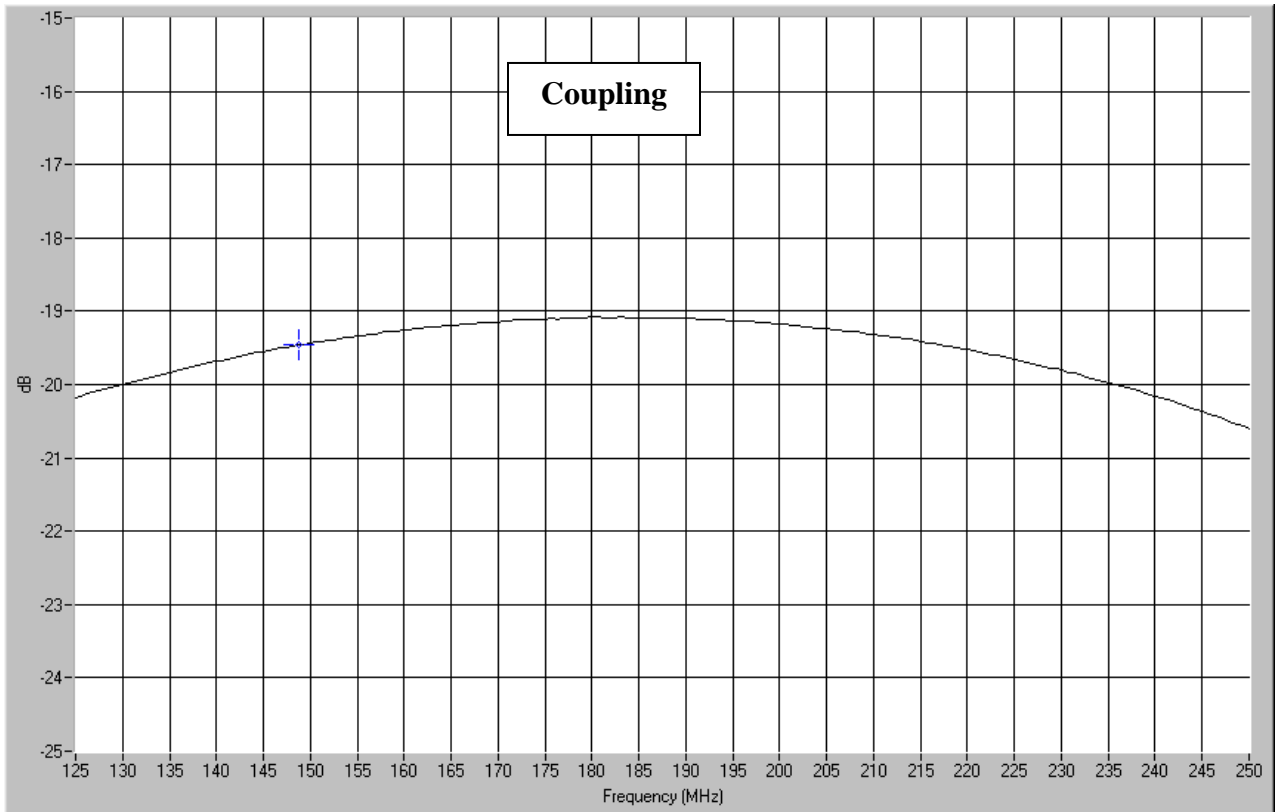


**NOTES:** The power rating applies when coupled port VSWR is 2.0:1 or less.  
Higher power can be handled with a lower VSWR termination  
Electrical and Mechanical Specifications subject to change without notice

#### Outline Drawing



**Typical Test Data Plots**



### Typical Test Data Plots

