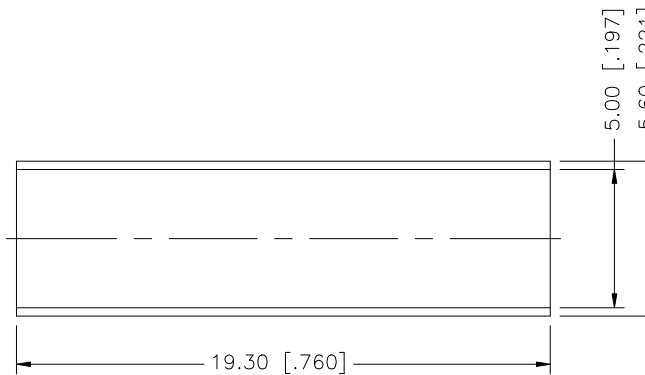
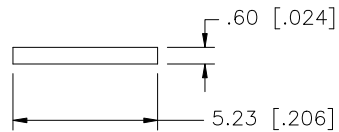
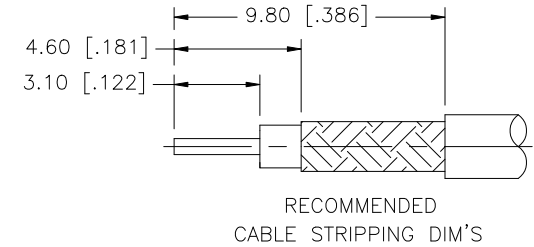
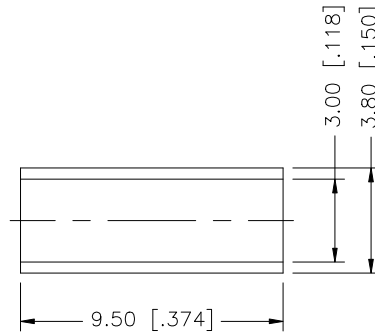
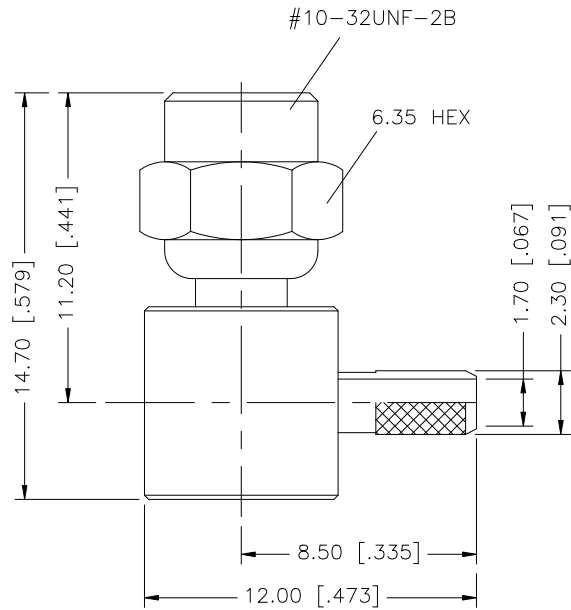


REV.	DATE	DESCRIPTION
NC	10/04/07	INITIAL RELEASE



NOTE:

1. CRIMPED FERRULE HEX CRIMP SIZE .128"
2. CONTACT PIN TO SOLDER.

8				
7				
6	HEAT SHRINK TUBE			1
5	FERRULE	COPPER	GOLD	1
4	COVER	BRASS	GOLD	1
3	CONTACT PIN	BER. COPPER	GOLD	1
2	INSULATOR	TEFLON	NATURAL	1
1	BODY	BRASS	GOLD	1
	DESCRIPTION	MATERIAL	FINISH	QTY

UNLESS OTHERWISE SPECIFIED DIMENSIONS ARE IN MILLIMETERS. DIMENSIONS IN [ ] ARE IN INCHES AND FOR CUSTOMER REFERENCE ONLY.

UNLESS OTHERWISE SPECIFIED TOLERANCES FOR MILLIMETERS ARE:  
0.5 - 8mm ± 0.20mm  
8 - 30mm ± 0.40mm  
30 - 120mm ± 0.50mm

UNLESS OTHERWISE SPECIFIED TOLERANCES FOR INCHES ARE:  
.020 - .315 = ± 0.007"  
.315 - 1.180 = ± 0.015"  
1.180 - 4.724 = ± 0.020"

DO NOT SCALE DRAWING

APPROVALS	DATE
DRAWN G.R.S.	10/04/07
CHECKED	
ISSUED	
SHEET 1 OF 1	
CAD FILE	C:/152/152107.DWG

<h1>Amphenol Connex</h1>			
PART DESCRIPTION <b>SMC R/A CRIMP PLUG</b> <b>(RG-174/U, 188A/U, 316/U)</b>			
PART NO. <b>152107</b>			
DWG. NO.	152107.DWG	REV. NC	SCALE NA