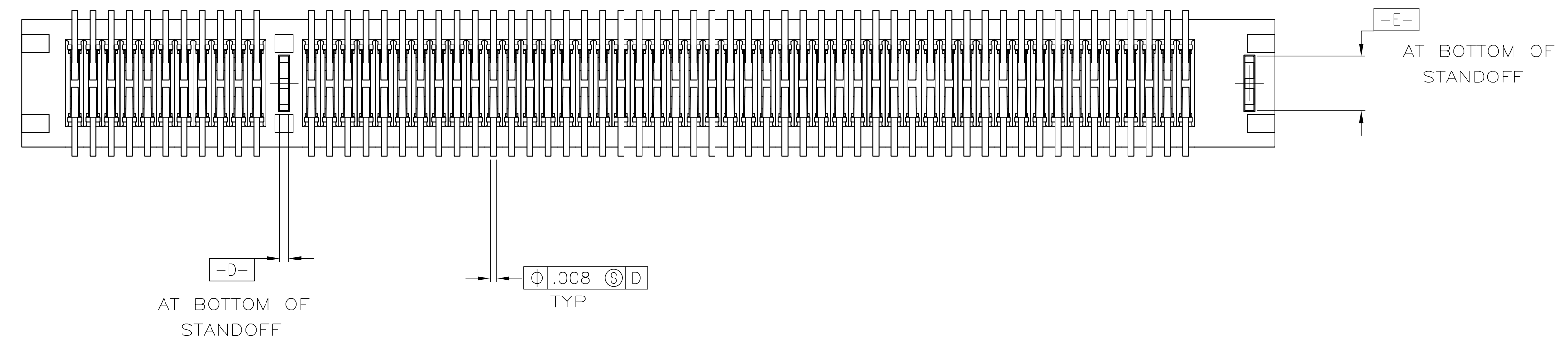
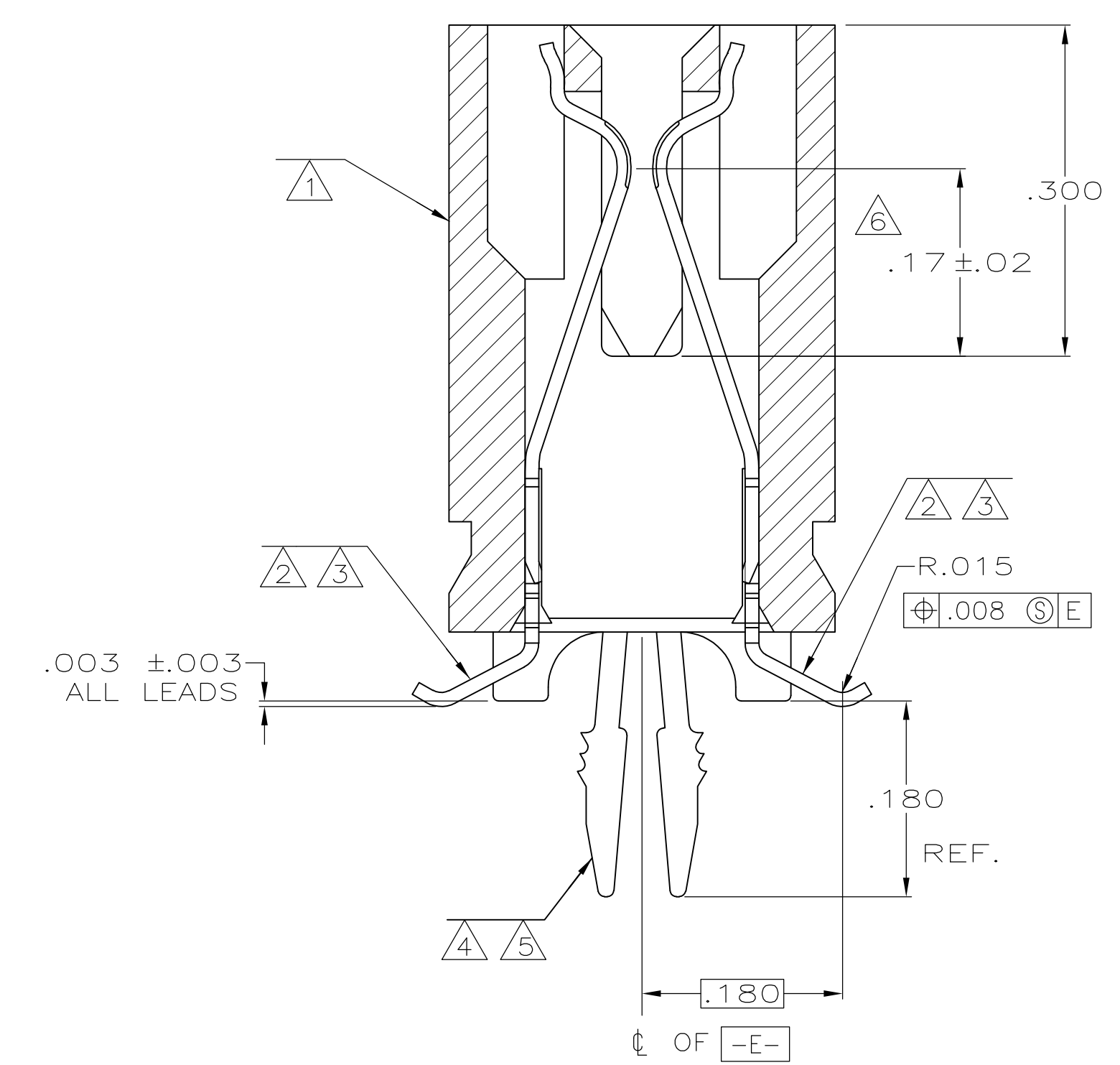
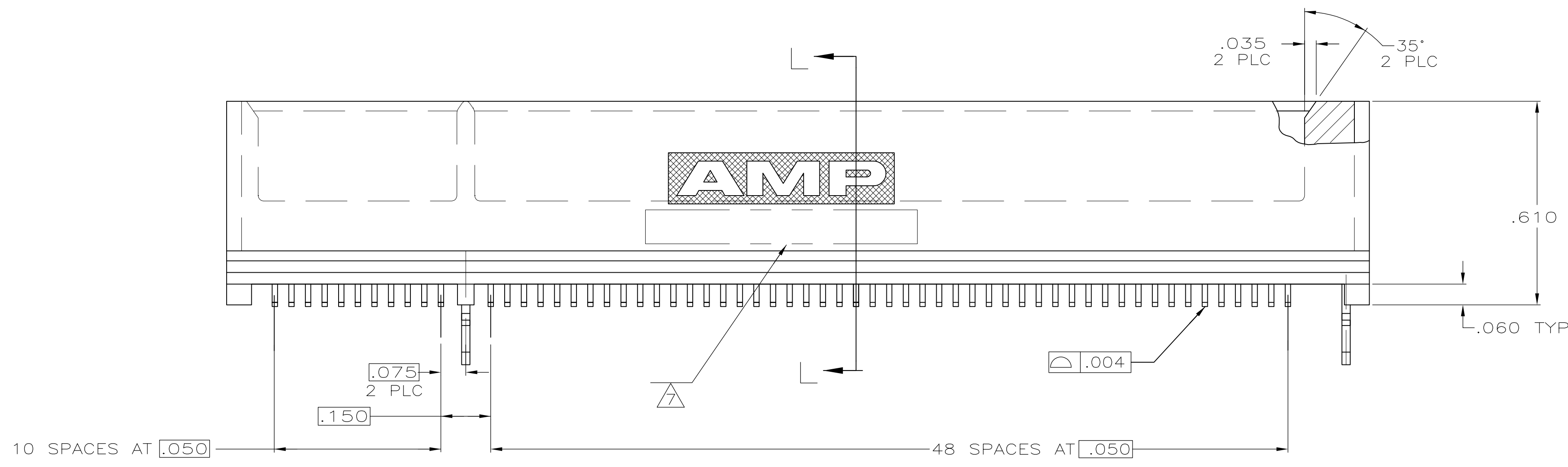


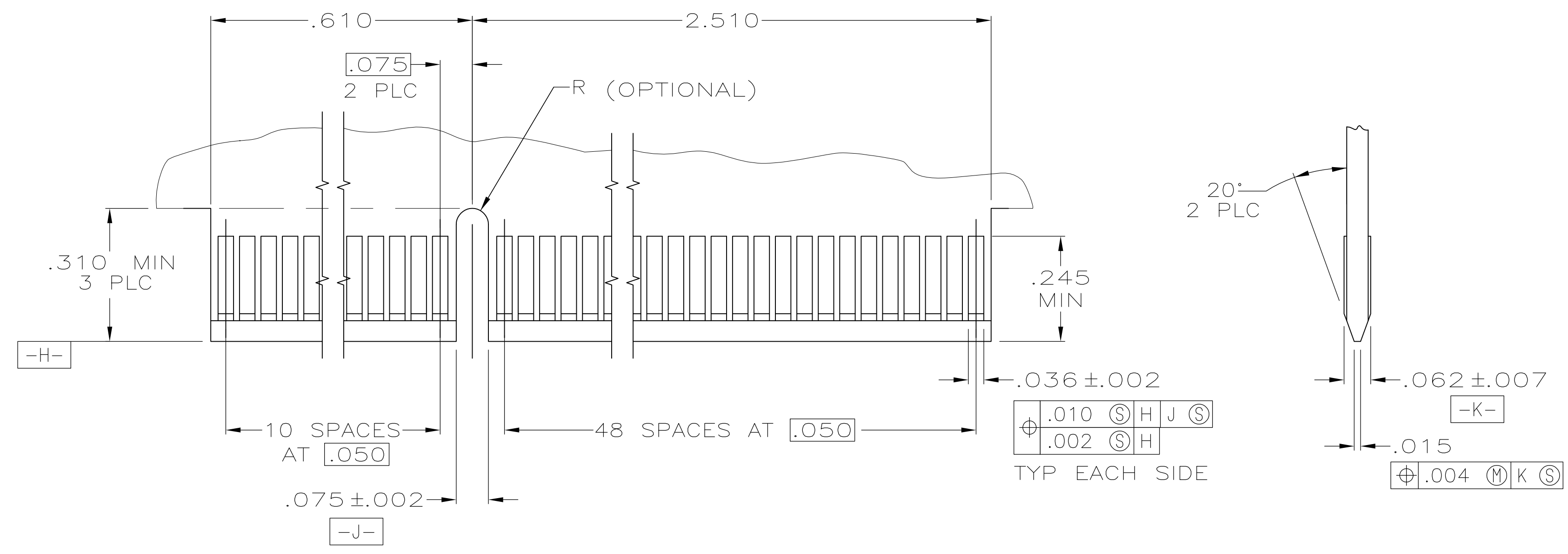
- ① HOUSING: HIGH TEMPERATURE THERMOPLASTIC.
- ② CONTACT: PHOSPHOR BRONZE.
- ③ CONTACT FINISH: .000100 MIN NICKEL ALL OVER, .000030 MIN GOLD OVER NICKEL IN CONTACT AREA, .000100 MIN MATTE TIN OVER NICKEL ON SOLDER TAILS.
- ④ METAL HOLD DOWN: BRASS
- ⑤ METAL HOLD DOWN FINISH: .000050 MIN NICKEL ALL OVER, .000150 MIN MATTE TIN ALL OVER.
- ⑥ DISTANCE FROM CONTACT POINT TO BOTTOM OF CARD SLOT.
- ⑦ AMP PART NUMBER, DATE CODE AND CSA LOGO MARKED IN APPROXIMATE AREA SHOWN.



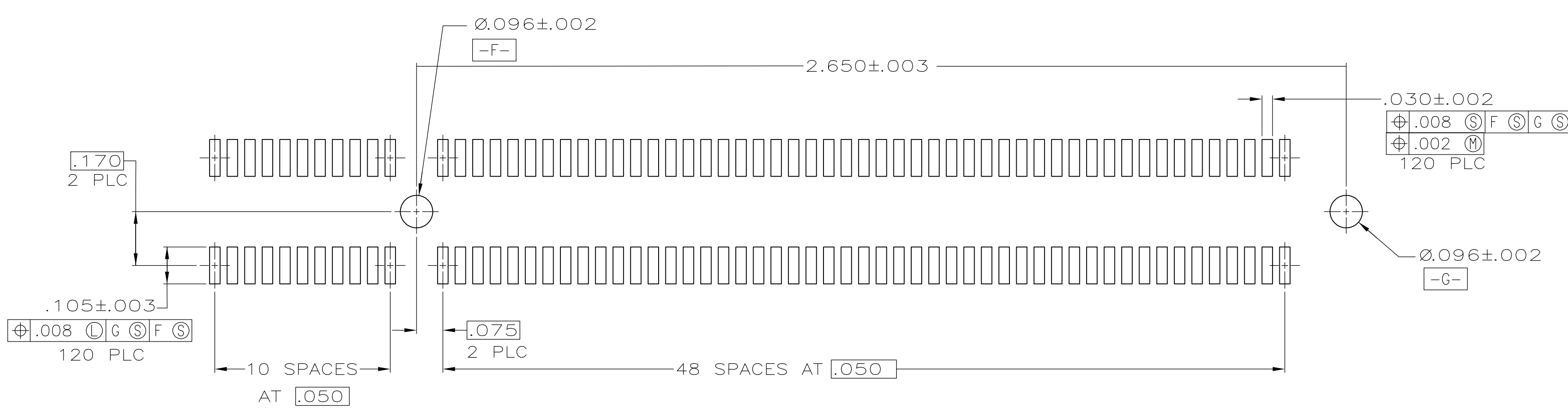
SECTION L-L
SCALE 8:1

145098-1 AS SHOWN

THIS DRAWING IS A CONTROLLED DOCUMENT.		DWN: AL FRANTUM 09 JUN 05		TE Connectivity	
DIMENSIONS: INCHES		CHK: AL FRANTUM 09 JUN 05			
TOLERANCES UNLESS OTHERWISE SPECIFIED:		APVD:		NAME:	
0 PLC ± - 1 PLC ± - 2 PLC ± - 3 PLC ± .005 4 PLC ± - ANGLES ± - °		PRODUCT SPEC: 108-14034 APPLICATION SPEC: 114-13148		CONECTOR ASSEMBLY, 60 DUAL POSITION, .050 SERIES, STANDARD EDGE, SURFACE MOUNT	
MATERIAL:		FINISH:		SIZE: A1	
①②④		③⑤		CAGE CODE: 00779	
CUSTOMER DRAWING		DRAWING NO: 5145098		RESTRICTED TO:	
SCALE: 4:1		SHEET: 1 OF 2		REV: P	



RECOMMENDED MATING BOARD EDGE CONFIGURATION



RECOMMENDED PC BOARD PATTERN
(CONNECTOR SIDE SHOWN)

THIS DRAWING IS A CONTROLLED DOCUMENT.		DWN AL FRANTUM 09 JUN 05 CHK AL FRANTUM 09 JUN 05 APVD AL FRANTUM	TE Connectivity
DIMENSIONS: INCHES 	TOLERANCES UNLESS OTHERWISE SPECIFIED: 0 PLC ± - 1 PLC ± - 2 PLC ± - 3 PLC ± .005 4 PLC ± - ± 2° ANGLES ± ± 2°	NAME PRODUCT SPEC 108-14034 APPLICATION SPEC 114-13148	
MATERIAL SEE SHEET 1	FINISH SEE SHEET 1	WEIGHT -	SIZE A1 SCALE 4:1 SHEET 2 OF 2 REV P