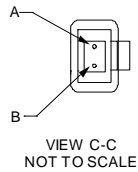


Left Side

Connector(s): MT-RJ SECURE (No Pins)
Mode: MM
Housing Color: Green
Geom. Spec: 115-1215



Fiber Path

Fiber A - - B
Fiber B - - A

Notes:

- 1 IL tested at 1300nm.
- 2 Product and Processing must meet requirements of Tyco Electronics Standard 230-702
- 3 Label 2 will not be present on any cable assembly less than 5 meters long.
- 4 Includes dust caps (not shown on print).

Right Side

Connector(s): LC-Duplex
Mode: MM
Housing Color: Beige
Geom. Spec: N/A

THIS INFORMATION IS CONFIDENTIAL AND PROPRIETARY TO TYCO ELECTRONICS CORPORATION. IT IS NOT TO BE DISCLOSED TO ANY OTHER PERSON OR ENTITY WITHOUT THE WRITTEN AUTHORIZATION OF TYCO ELECTRONICS CORPORATION, HARRISBURG, PENNSYLVANIA.

LOC
CE
DIST
16

A	Rev Per	EC#	RELEASE	1/13/2008	-	DF	
P	LTR		REVISION RECORD	DATE	DN	APVD	

DIMENSIONS:	TOLERANCES UNLESS OTHERWISE SPECIFIED:
meters	
	0 PLC ± .
	1 PLC ± .
	2 PLC ± .
	3 PLC ± .
	4 PLC ± .

Restricted To:

DM	Cable Assy Configurator	MATERIAL	HEAT TREAT
CHK	Dave Fennell		
APVD	Dave Fennell	AMP Tyco Electronics, Inc. Harrisburg, PA 17105-3608	
NAME	FO C/A - 2 fiber, 50/125, OFNR (Riser) jacket, MT-RJ SECURE (No Pins) to LC-Duplex		
SCALE	SIZE	DRAWING NO	SHEET
NTS	A2	C- 1907398	1 of 3
			REV A

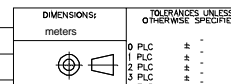
Part #	L (meters)	L (feet)	MT-RJ SECURE (No Pins), Green		LC-Duplex, Beige	
			IL (dB)	RL (dB)	IL (dB)	RL (dB)
0-1907398-1	0.950 - 1.050	3.11 - 3.44	0.5	20	0.5	-
0-1907398-2	1.950 - 2.050	6.39 - 6.72	0.5	20	0.5	-
0-1907398-3	2.950 - 3.050	9.67 - 10.00	0.5	20	0.5	-
0-1907398-4	3.920 - 4.080	12.86 - 13.38	0.51	20	0.51	-
0-1907398-5	4.920 - 5.080	16.14 - 16.66	0.51	20	0.51	-
0-1907398-6	5.920 - 6.080	19.42 - 19.94	0.51	20	0.51	-
0-1907398-7	6.920 - 7.080	22.70 - 23.22	0.51	20	0.51	-
0-1907398-8	7.920 - 8.080	25.98 - 26.50	0.51	20	0.51	-
0-1907398-9	8.850 - 9.150	29.03 - 30.01	0.51	20	0.51	-
1-1907398-0	9.850 - 10.150	32.31 - 33.30	0.52	20	0.52	-
1-1907398-1	10.850 - 11.150	35.59 - 36.58	0.52	20	0.52	-
1-1907398-2	11.850 - 12.150	38.87 - 39.86	0.52	20	0.52	-
1-1907398-3	12.850 - 13.150	42.15 - 43.14	0.52	20	0.52	-
1-1907398-4	13.850 - 14.150	45.43 - 46.42	0.52	20	0.52	-
1-1907398-5	14.850 - 15.150	48.72 - 49.70	0.52	20	0.52	-
1-1907398-6	15.840 - 16.160	51.96 - 53.01	0.52	20	0.52	-
1-1907398-7	16.830 - 17.170	55.21 - 56.33	0.53	20	0.53	-
1-1907398-8	17.820 - 18.180	58.46 - 59.64	0.53	20	0.53	-
1-1907398-9	18.810 - 19.190	61.71 - 62.95	0.53	20	0.53	-
2-1907398-0	19.800 - 20.200	64.96 - 66.27	0.53	20	0.53	-
2-1907398-1	20.790 - 21.210	68.20 - 69.58	0.53	20	0.53	-
2-1907398-2	21.780 - 22.220	71.45 - 72.90	0.53	20	0.53	-
2-1907398-3	22.770 - 23.230	74.70 - 76.21	0.53	20	0.53	-
2-1907398-4	23.760 - 24.240	77.95 - 79.52	0.54	20	0.54	-
2-1907398-5	24.750 - 25.250	81.20 - 82.84	0.54	20	0.54	-
2-1907398-6	25.740 - 26.260	84.44 - 86.15	0.54	20	0.54	-
2-1907398-7	26.730 - 27.270	87.69 - 89.46	0.54	20	0.54	-
2-1907398-8	27.720 - 28.280	90.94 - 92.78	0.54	20	0.54	-
2-1907398-9	28.710 - 29.290	94.19 - 96.09	0.54	20	0.54	-
3-1907398-0	29.700 - 30.300	97.44 - 99.40	0.55	20	0.55	-
3-1907398-1	30.690 - 31.310	100.68 - 102.72	0.55	20	0.55	-
3-1907398-2	31.680 - 32.320	103.93 - 106.03	0.55	20	0.55	-
3-1907398-3	32.670 - 33.330	107.18 - 109.35	0.55	20	0.55	-
3-1907398-4	33.660 - 34.340	110.43 - 112.66	0.55	20	0.55	-
3-1907398-5	34.650 - 35.350	113.68 - 115.97	0.55	20	0.55	-
3-1907398-6	35.640 - 36.360	116.92 - 119.29	0.55	20	0.55	-
3-1907398-7	36.630 - 37.370	120.17 - 122.60	0.56	20	0.56	-
3-1907398-8	37.620 - 38.380	123.42 - 125.91	0.56	20	0.56	-
3-1907398-9	38.610 - 39.390	126.67 - 129.23	0.56	20	0.56	-
4-1907398-0	39.600 - 40.400	129.92 - 132.54	0.56	20	0.56	-
5-1907398-0	49.500 - 50.500	162.40 - 165.68	0.58	20	0.58	-

Qty	U of M	Description	Item No.
2	piece	Trace Label	14
2	piece	Eyelet/Shrink tube assembly - White	13
1	piece	MT-RJ TwinZip Bend Limiting Boot, Beige	12
AR	meter	2 fiber, 50/125, 1.8 mm, Twinzip, Orange, OFNR (Riser)	11
1	piece	MT-RJ FERRULE, THERMOPLAST,MM	10
2	piece	LC Connector Assy, MM	9
1	piece	LC Duplex clip, black	8
2	piece	LC, SC, FC Straight Boot, Beige	7
1	piece	MT-RJ Keyed Connector Housing - Green	6
1	piece	CRIMP EYELET, MT-RJ	5
1	piece	MT-RJ, SPRING PUSH, UNIVERSAL	4
1	piece	PIN KEEPER, 3.8MM	3
1	piece	SPRING, MT-RJ, 3.8 DESIGN	2
1	piece	DUST COVER, MT-RJ	1

THIS INFORMATION IS CONFIDENTIAL AND PROPRIETARY TO TYCO ELECTRONICS CORPORATION. IT IS TO BE CONTAINED AND CONTROLLED BY THE PERSONNEL OF TYCO ELECTRONICS CORPORATION AND ITS SUBSIDIARIES. IT IS NOT TO BE DISCLOSED TO ANY OTHER PERSONS WITHOUT THE WRITTEN AUTHORIZATION OF TYCO ELECTRONICS CORPORATION, HARRISBURG, PENNSYLVANIA.

LOC
CE
DIST
16

REV	DATE	DESCRIPTION	BY	CHK
A	1/13/2008	RELEASE		



RESTRICTED TO:

DIN Cable Assy Configurator	MATERIAL	HEAT TREAT
OK Dave Fennell		
APVD Dave Fennell	AMP Tyco Electronics, Inc. Harrisburg, PA 17105-3608	
NAME FO C/A - 2 fiber, 50/125, OFNR (Riser) jacket, MT-RJ SECURE (No Pins) to LC-Duplex		
SCALE NTS	SIZE A2	DRAWING NO C-1907398
		SHEET 2 of 3
		REV A

8 7 6 5 4 3 2 1

D
C
B
A

THIS DRAWING IS A CONTROLLED DOCUMENT. BFC#D

Label 1

Per specification 107-1645-1



- Trace # - Bar Code
- Trace # - Human Readable
- Part Number
- Country of Origin

This label is used on all lengths on this drawing.

Label 2

Per specification 107-1645-1



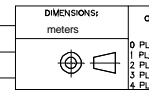
- Trace # - Bar Code
- Trace # - Human Readable
- Part Number
- Country of Origin

This label is used on all lengths on this drawing.

THIS INFORMATION IS CONFIDENTIAL AND PROPRIETARY TO TYCO ELECTRONICS CORPORATION. IT IS THE PROPERTY OF TYCO ELECTRONICS CORPORATION AND IS NOT TO BE DISCLOSED TO ANYONE OTHER THAN TYCO ELECTRONICS PERSONNEL, WITHOUT WRITTEN AUTHORIZATION FROM TYCO ELECTRONICS CORPORATION, HARRISBURG, PENNSYLVANIA

LOC
CE
DIST
16

A	Rev Per	EC#	RELEASE	1/13/2008	-	DF	
P	LTR		REVISION RECORD	DATE	DIN	APVD	



DIMENSIONS:	TOLERANCES UNLESS OTHERWISE SPECIFIED:
meters	
0 PLC	± .
1 PLC	± .
2 PLC	± .
3 PLC	± .
4 PLC	± .

Restricted To:

DIN	Cable Assy Configurator	MATERIAL	HEAT TREAT
OK	Dave Fennell	-	-
APVD	Dave Fennell	AMP Tyco Electronics, Inc. Harrisburg, PA 17105-3608	
NAME	FO C/A - 2 fiber, 50/125, OFNR (Riser) jacket, MT-RJ SECURE (No Pins) to LC-Duplex		
SCALE	SIZE	DRAWING NO	SHEET
NTS	A2	C- 1907398	3 of 3
			REV
			A

D
C
B
A