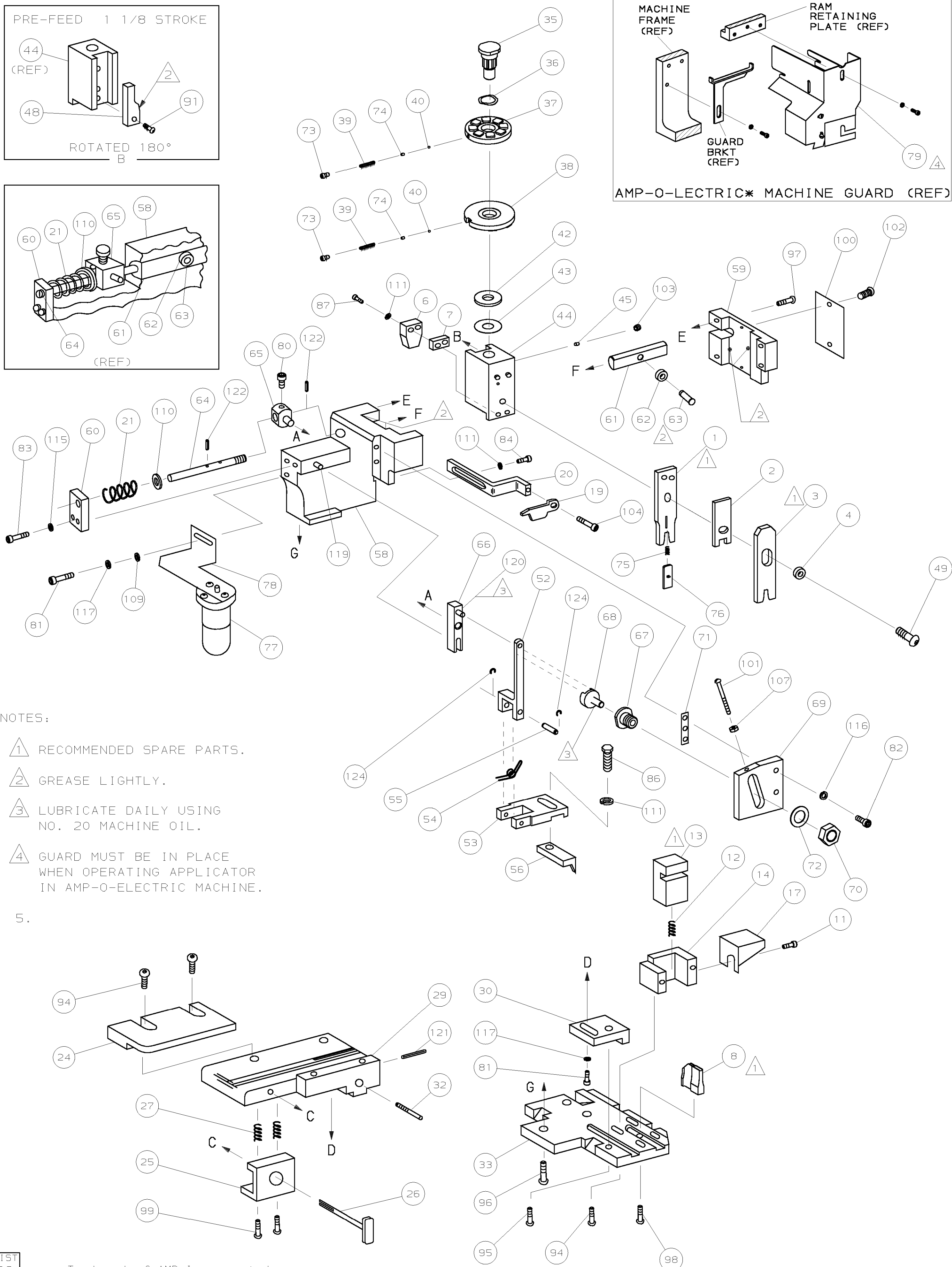


THIS DRAWING IS A CONTROLLED DOCUMENT.



- NOTES:
- 1 RECOMMENDED SPARE PARTS.
  - 2 GREASE LIGHTLY.
  - 3 LUBRICATE DAILY USING NO. 20 MACHINE OIL.
  - 4 GUARD MUST BE IN PLACE WHEN OPERATING APPLICATOR IN AMP-0-ELECTRIC MACHINE.
- 5.

REF	DESCRIPTION	QTY	REF	DESCRIPTION	QTY	
21045-3	RING, RET "C" (.187ø) FEED FINGER PIN	124	454220-1	CAP, HOUSING	59	
5-21028-1	PIN, SLT SPR (.125øx.50) ADJ ROD	123	454485-1	HOUSING	58	
4-21028-0	PIN, SLT SPR (.093øx.75) ST GUIDE PL	121	1-694433-3	PAWL, FEED	56	
1-21030-1	PIN, DOWEL (.187øx.50) LEVER	120	240624-1	PIN, FEED FINGER	55	
1-21030-6	PIN, DOWEL (.187øx1.25) HOUSING	119	691499-1	SPRING, FEED FINGER	54	
21024-5	WASHER, LOCK (NO.10) ADJ BLOCK	117	690541-1	FINGER, FEED	53	
21024-5	WASHER, LOCK (NO.10) ADJ PLATE	116	455679-1	LEVER, TERMINAL FEED ARM	52	
21024-5	WASHER, LOCK (NO.10) FEED GUIDE ROD	115			51	
		114	7-21002-9	BOLT, CRIMPER (5/16-24x1.00)	50	
		113	690602-5	CAM, PRE-FEED 1 1/8 STROKE	49	
		112			48	
4	21024-4	WASHER, LOCK (NO.8) STRIPPER	111	459456-1	APPLICATOR, BASIC (SUBASSY)	47
REF	21899-4	WASHER, FLAT (5/16 DIA) SCREW ADJ	110	690191-1	PLUG, NYLON	46
1	21899-2	WASHER, FLAT (NO.10) LUB ASSY	109	455673-1	RAM	45
			108	690125-1	WASHER, LAMINATED	44
REF	21018-5	NUT, HEX (6-32) FEED ADJ	107	1-690124-3	WASHER, RAM	43
			106		42	
			105		41	
1	456567-1	SCR, SHLD (.188øx.125) STRIPPER	104	23241-6	BALL, STEEL	40
1	21009-2	SCR, SKT SET (1/4-20x.25) LOC-WEL) RAM	103	690170-1	SPRING, COMPRESSION	39
2	21017-2	SCR, DRIVE (#2x.19) ID PLATE	102	690142-4	DISC, INSULATION	38
REF	6-23715-5	SCR, PAN HD (6-32x1.50) FEED ADJ	101	4-692155-0	DISC, WIRE	37
1	461264-1	PLATE, IDENTIFICATION	100	22480-5	WASHER, SPRING	36
2	2-21002-9	SCR, BHC (10-32x.75) DRAG	99	690212-1	POST, RAM	35
1	22733-8	SCR, BHC (8-32x.38) LOC-WEL) ANVIL	98			34
REF	2-21002-9	SCR, BHC (10-32x.75) CAP	97	455675-1	PLATE, BASE	33
REF	2-22733-8	SCR, BHC (1/4-20x.62) HOUSING	96	690432-3	SCREW, ADJUSTMENT	32
REF	2-21002-7	SCR, BHC (10-32x.50) SG ADJ BLOCK	95			31
4	2-21002-2	SCR, BHC (8-32x.50) SHEAR	94	455689-1	BLOCK, STRIP GUIDE ADJ	30
			93	856172-1	PLATE, STRIP GUIDE	29
			92			28
1	1-21002-7	SCR, BHC (6-32x.38) CAM	91	1-22284-0	SPRING, DRAG	27
			90	690546-1	LEVER, DRAG RELEASE	26
			89	1-690754-7	DRAG, STOCK	25
			88	856167-1	GUIDE, STRIP (REAR)	24
			87			23
2	2-21000-6	SCR, SKT CAP (8-32x.38) DEP-HOLD DOWN	86			22
1	2-22603-0	SCR, HEX HEAD (8-32x.31) FEED FINGER	85	4-22284-9	SPRING, FEED RETURN	21
			84	458950-1	ARM, STRIPPER	20
1	2-21000-7	SCR, SKT CAP (8-32x.50) STRIPPER	83	458949-1	STRIPPER	19
REF	3-21000-7	SCR, SKT CAP (10-32x.75) FEED ROD GD	82			18
REF	3-21000-6	SCR, SKT CAP (10-32x.62) FEED ADJ BLK	81	691668-1	GUARD, CHIP (REAR)	17
2	3-21000-4	SCR, SKT CAP (10-32x.38) SG ADJ BLK	80			16
REF	3-21000-4	SCR, SKT CAP (10-32x.38) PIVOT BLOCK	79			15
REF	455749-1	GUARD, WINDOW	78	690462-1	HOLDER, SHEAR (REAR)	14
1	1-465184-0	LUBRICATOR ASSY	77	690463-1	SHEAR, FLOAT (REAR)	13
REF	852931-2	OIL, LUBRICATING	76	5-22280-0	SPRING, SHEAR	12
1	693183-1	WIRE DEPRESSOR	75	690461-1	STOP, SHEAR	11
1	1-23147-2	SPRING, COMPRESSION	74			10
2	690603-1	SPRING, ASSIST	73			9
2	23030-1	SCR, SKT CAP (6-32x.25) CP DISC	72	813339-2	ANVIL	8
REF	458109-1	WASHER, SPECIAL	71	1-240641-9	SPACER, DEPRESSOR (REAR)	7
REF	690517-1	SPACER	70	690468-2	DEPRESSOR, SHEAR (REAR)	6
REF	22594-8	NUT, HEX	69			5
REF	240628-1	PLATE, ADJUSTMENT	68	1-238009-6	SPACER, TUBULAR	4
REF	240626-1	SHAFT, PIVOT	67	2-683453-0	CRIMPER, INSULATION	3
REF	240633-1	BUSHING	66	693184-6	SPACER, CRIMPER	2
REF	455680-1	LEVER, INTERMEDIATE	65	817331-9	CRIMPER, WIRE	1
REF	240629-1	BLOCK, PIVOT	64			
REF	240632-2	SCREW, ADJUSTMENT FEED ROD	63			
REF	240659-3	PIN, CAM ROLLER	62			
REF	240658-1	ROLLER, CAM	61			
REF	454398-2	ROD, FEED	60			
REF	454178-1	GUIDE, FEED ROD				

QTY	PART NO	DESCRIPTION	ITEM NO
CRIMPING DATA			
PAD LTR	CRIMP HEIGHT	WIRE SIZE	WIRE STRIP LENGTH
A	.030	26	
B	.027	28 OR 30	
C	NOT USED		
D	NOT USED		
CRIMP	SIZE	TYPE	FEED
WIRE	.042	F	.295
INSUL	.070	F	A1
WIRE RANGE	30-26	INSULATION RANGE	.039-.059
		MACHINE NO	565435-5
APPLICATOR WILL APPLY			
170355-1			

**AMP-0-ELECTRIC PRE-FEED**

SET UP GAGE	10-1	458637-1	L1419
DR	4/24/91	APP	5-1-91
P. MATHIAS		B. WOLFE	
CHK	4-29-91	REL	5-3-91
P. MARIZ		MCPHERSON	
LOC	A	NO	567412-2
REV	D		

AMP INCORPORATED  
Harrisburg, Pa.

MINIATURE QUICK CHANGE APPLICATOR  
SIDE FEED (CONTACT LOW PROFILE EI SERIES CONNECTOR)