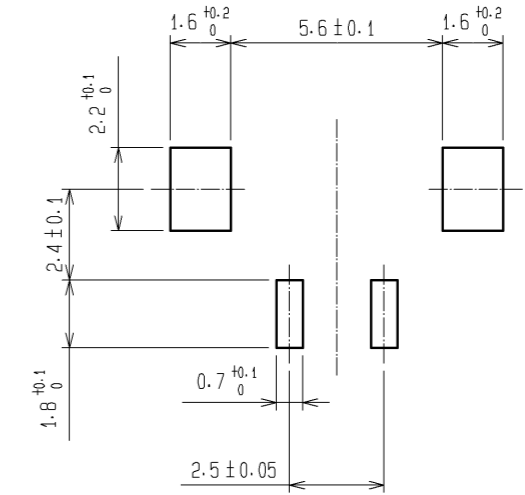
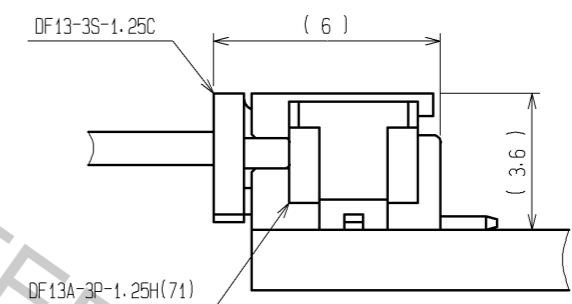


3 APPLICATION DRAWING



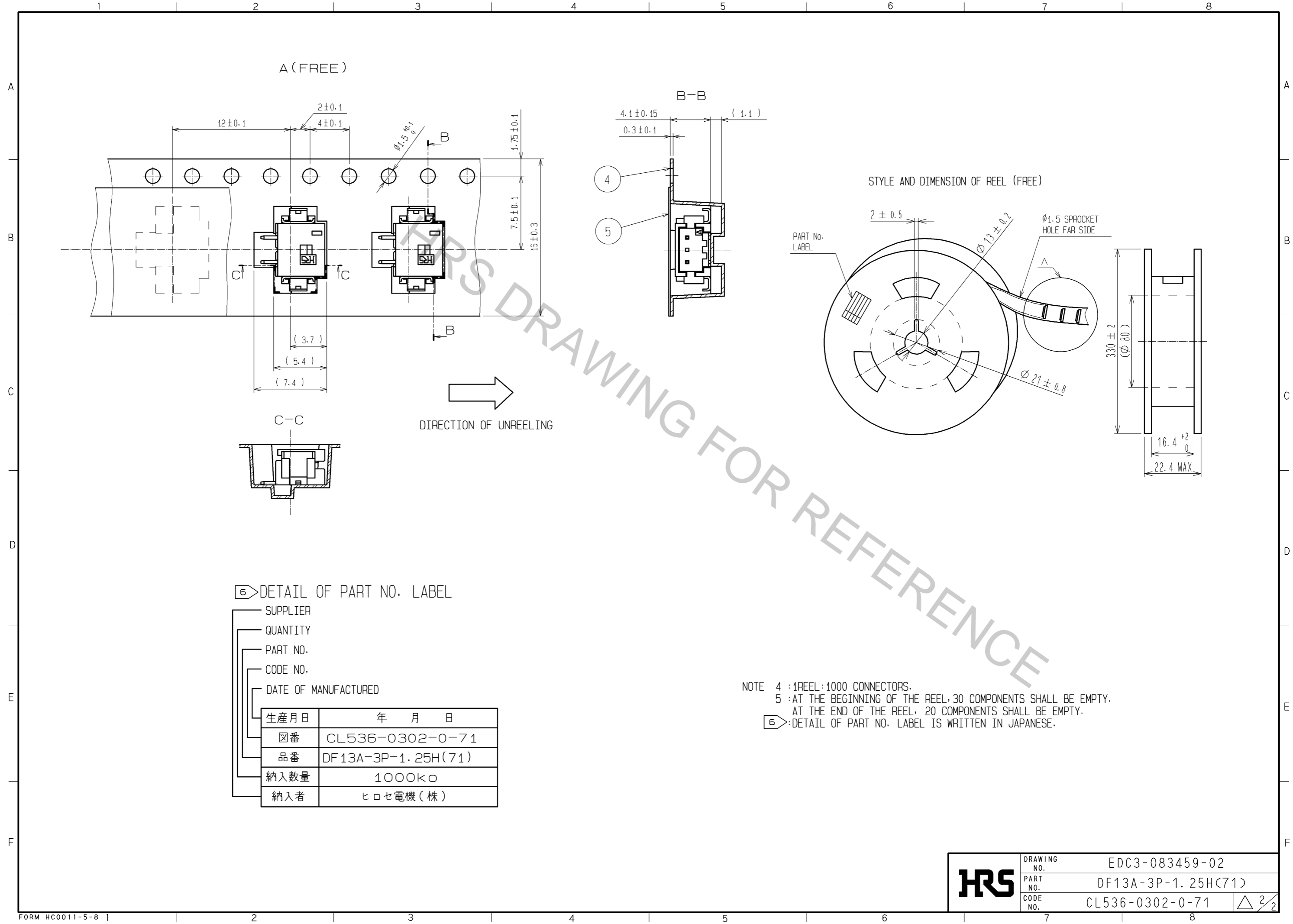
1 RECOMMENDED PATTERN



- NOTE 1: WHEN THIS CONNECTOR MATES WITH DF13-3S-1.25C THE MATING LENGTH IS 3.6 mm.  
 2: FLATNESS OF LEAD WITH REINFORCED METAL FITTINGS SHALL BE WITHIN 0.1mm.  
 3: RECOMMENDED THICKNESS OF CREAM SOLDER PASTE: 0.15-0.2mm  
 OPEN AREA RATION: 100%

2	BRASS	SURFACE : TIN PLATED 1μm min. UNDER PLATING: COPPER PLATED 1μm min	5	POLYESTER	COVER TAPE, CLEAR
1	POLYAMIDE	BEIGE (UL94V-0)	4	PS	EMBOSSSED CARRIER TAPE, CLEAR
			3	PHOSPHOR BRONZE	SURFACE : TIN PLATED 1μm min.
NO.	MATERIAL	FINISH, REMARKS	NO.	MATERIAL	FINISH, REMARKS
UNITS mm		SCALE 5 : 1	COUNT △	DESCRIPTION OF REVISIONS	
DESIGNED		CHECKED		DATE	
APPROVED : HK. UMEHARA			11.09.22		
CHECKED : HK. UMEHARA			11.09.22		
DESIGNED : HT. SATO			11.09.22		
DRAWN : MI. SAKIMURA			11.09.20		
DRAWING NO.				EDC3-083459-02	
PART NO.				DF13A-3P-1.25H(71)	
CODE NO.				CL536-0302-0-71	
				△ 1/2	

Apr.1.2017 Copyright 2017 HIROSE ELECTRIC CO., LTD. All Rights Reserved.



DETAIL OF PART NO. LABEL

- SUPPLIER
- QUANTITY
- PART NO.
- CODE NO.
- DATE OF MANUFACTURED

生産月日	年 月 日
図番	CL536-0302-0-71
品番	DF13A-3P-1.25H(71)
納入数量	1000k $\square$
納入者	ヒロセ電機(株)

NOTE 4 : 1 REEL : 1000 CONNECTORS.  
 5 : AT THE BEGINNING OF THE REEL, 30 COMPONENTS SHALL BE EMPTY.  
 AT THE END OF THE REEL, 20 COMPONENTS SHALL BE EMPTY.  
 6 : DETAIL OF PART NO. LABEL IS WRITTEN IN JAPANESE.

<b>HRS</b>	DRAWING NO.	EDC3-083459-02
	PART NO.	DF13A-3P-1.25H(71)
	CODE NO.	CL536-0302-0-71
		$\triangle$ 2/2