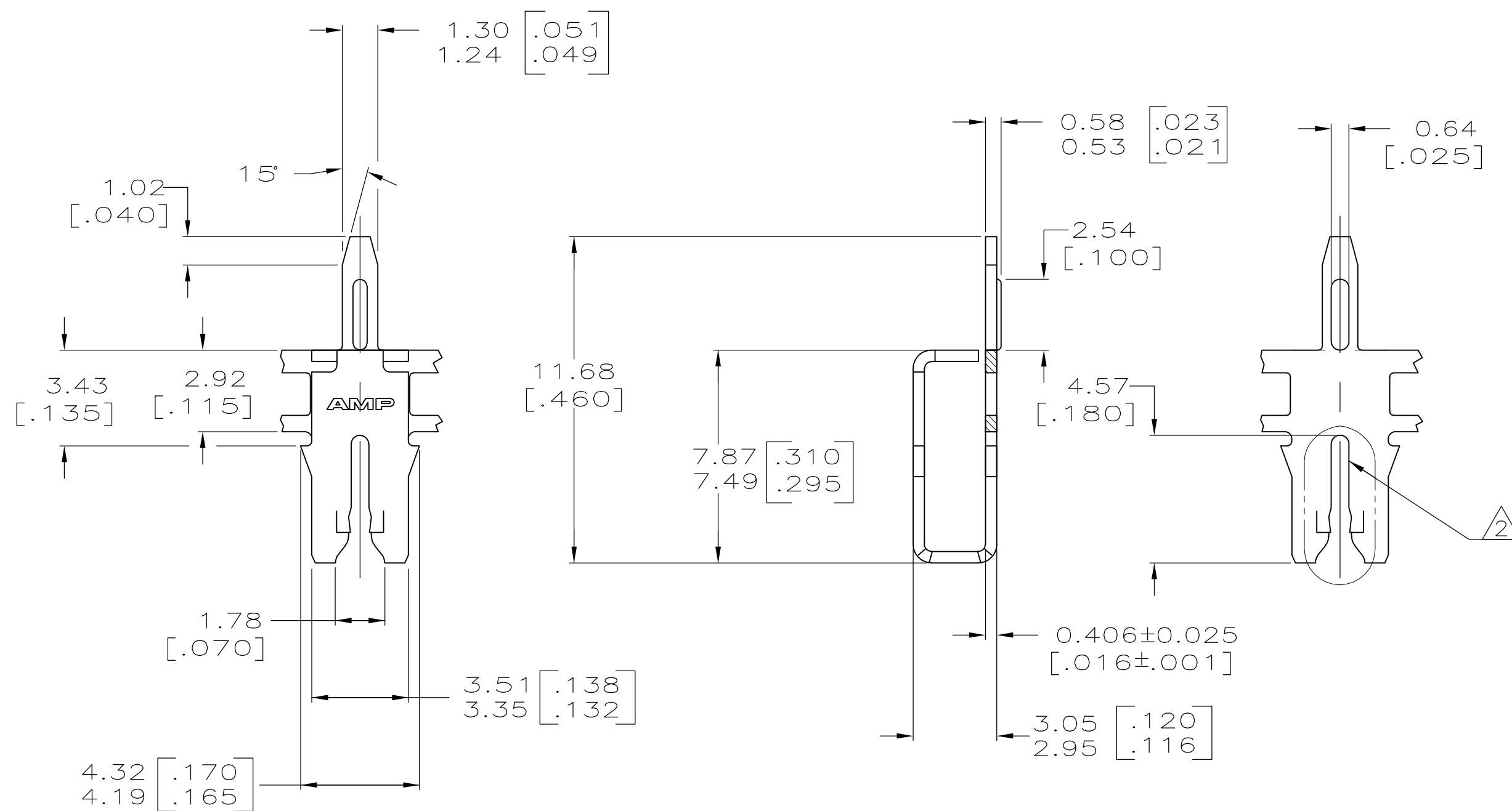
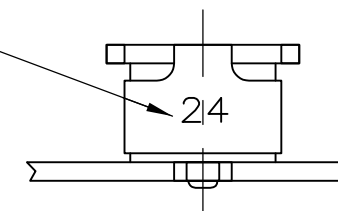


THIS DRAWING IS UNPUBLISHED. RELEASED FOR PUBLICATION
 © COPYRIGHT - By - ALL RIGHTS RESERVED.

LOC	DIST	REVISIONS			
P	LTR	DESCRIPTION	DATE	DWN	APVD
AF	50	D	REVISED PER ECR-12-020585	05DEC12	KH KR

- 1 CONTINUOUS STRIP ON REELS WITH TERMINALS LOCATED ON 5.59 [.220] CENTERS.
- 2 SLOT TERMINATES A SINGLE COPPER MAGNET WIRE ONLY. COPPER RANGE: 0.91-1.15mm [#19-#17] AWG.
- 3 0.00254 [.000100] MIN TIN OVER 0.00127 [.000050] MIN NICKEL UNDERPLATE.

IDENTIFICATION NUMBER 24 FOR MAGNET WIRE RANGE



63661-1
 PART NUMBER

THIS DRAWING IS A CONTROLLED DOCUMENT.		DWN MICHAEL S. FEHER 8/14/92	TE TE Connectivity	
DIMENSIONS: INCHES		CHK PHILLIP M. FORTNEY 8/18/92		
TOLERANCES UNLESS OTHERWISE SPECIFIED:		APVD -	NAME POST, SOLDER, MAG-MATE	
0 PLC ± -		PRODUCT SPEC 108-2012	SIZE A2	
1 PLC ± -		APPLICATION SPEC 114-2046	CAGE CODE 00779	DRAWING NO 63661
2 PLC ± 0.25 [.010]		WEIGHT -	RESTRICTED TO -	
3 PLC ± -		MATERIAL 4M BRASS	SCALE 6:1	
4 PLC ± -		FINISH 3	SHEET 1 of 1	
ANGLES ± 1°		CUSTOMER DRAWING		
INCHES		REV D		