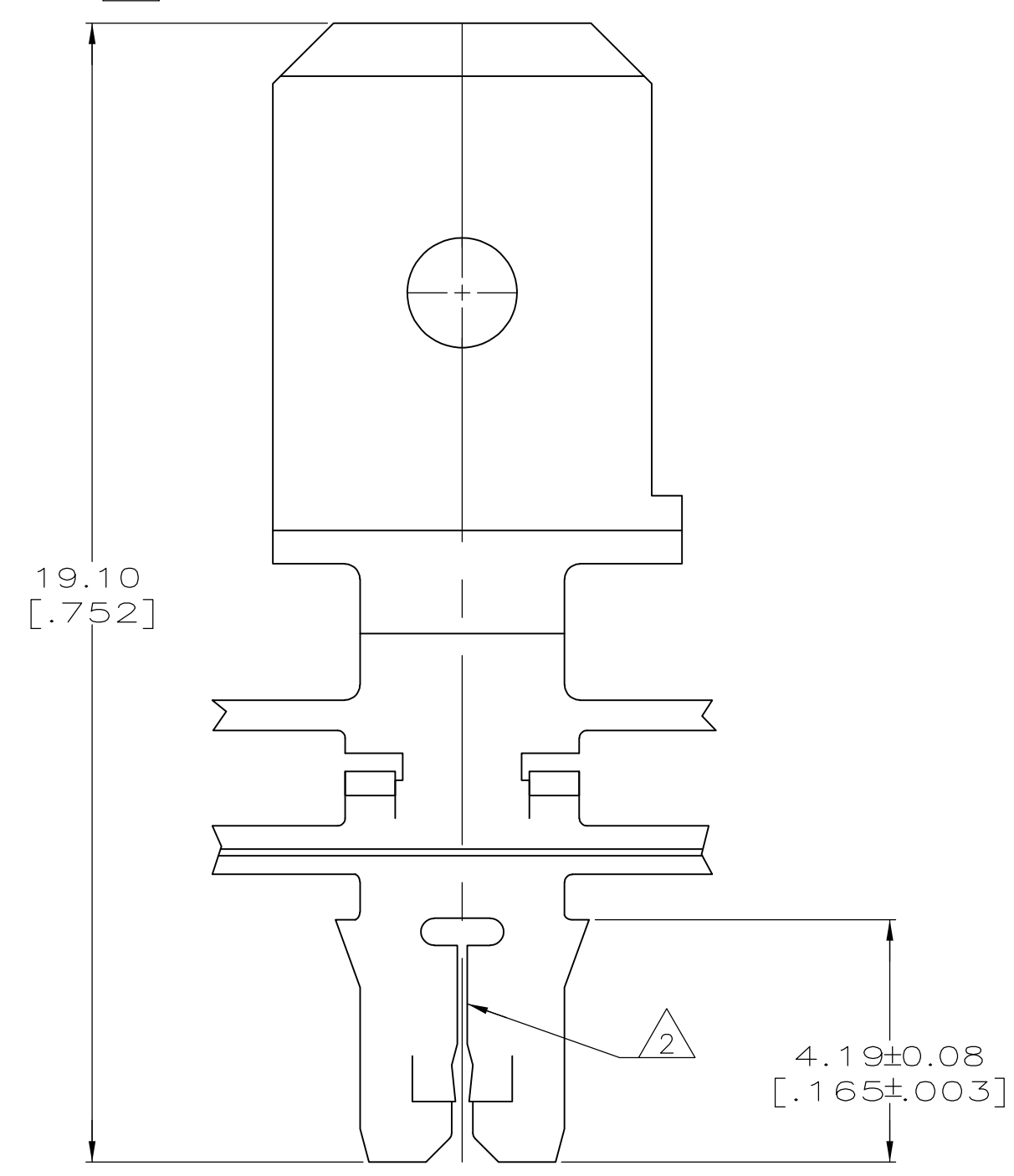
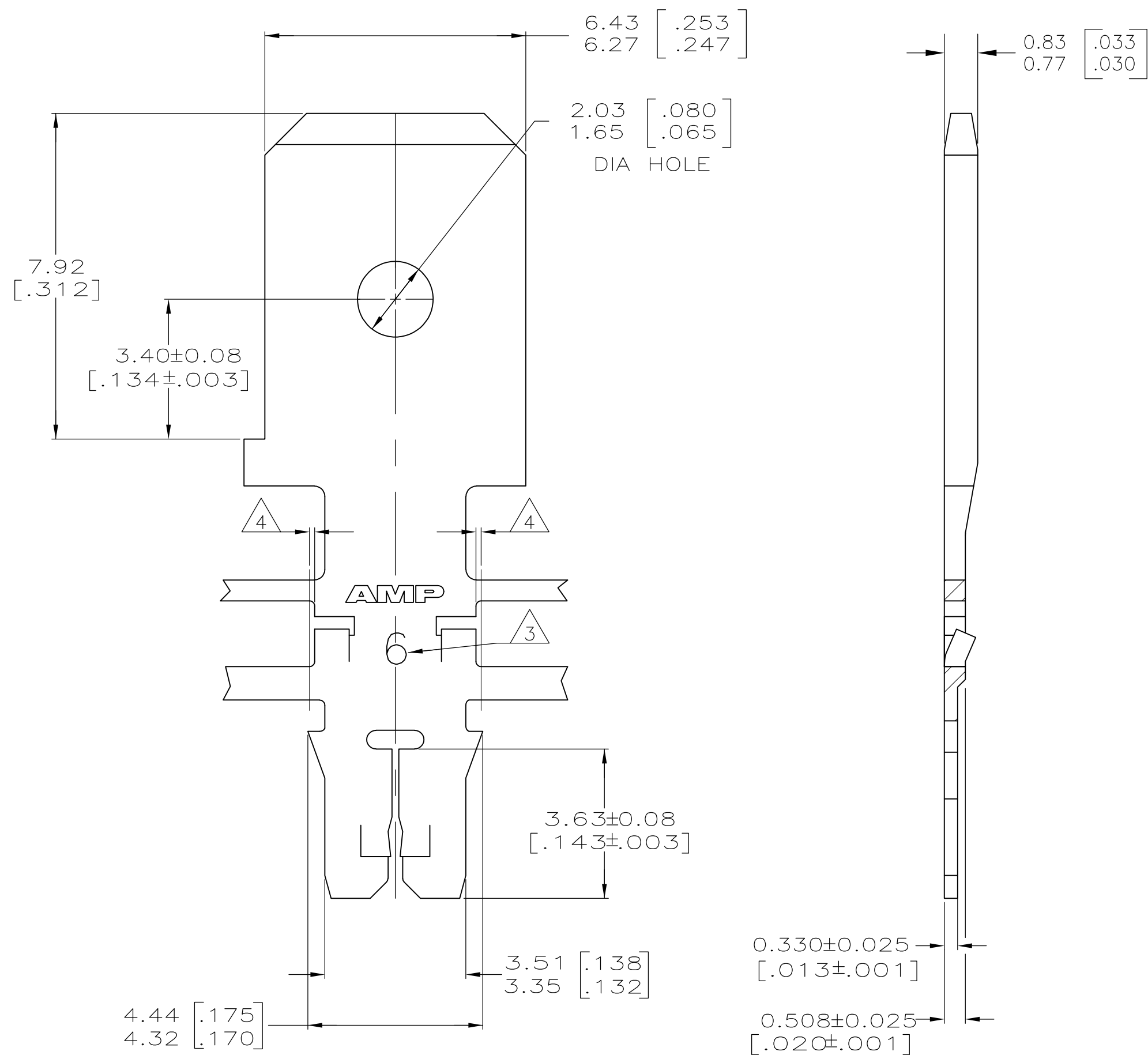


LOC	DIST	REVISIONS					
AF	50	P	LTR	DESCRIPTION	DATE	DWN	APVD
			G1	ECR-15-005665	10AUG2015	BDA	PKS

- 1 CONTINUOUS STRIP ON REELS WITH TERMINALS LOCATED ON 8.38±0.08 [.330±.003] CENTERS.
- 2 SLOT ACCEPTS 0.25-0.32mm [#30-#28] AWG COPPER MAGNET WIRE. SLOT ACCEPTS 0.32-0.45mm [#28-#25] AWG ALUMINUM MAGNET WIRE. ALUMINUM WIRE RANGE APPLIES FOR POST-TIN PLATED VERSIONS ONLY.TWO WIRES OF THE SAME SIZE MAX PER SLOT
- 3 IDENTIFICATION NUMBER 6 FOR THE MAGNET WIRE SLOT SIZE
- 4 0.25 [.010] MAX CARRIER CUT-OFF TABS.
- 5 PRE-PRODUCTION - F.A.S.R. REQUIRED.



OBSELETE	082 PRE-MILLED BRASS	5	63717-2
	4M PRE-MILLED BRASS		63717-1
MATERIAL		PART NUMBER	

THIS DRAWING IS A CONTROLLED DOCUMENT.		DWN	L.A.MAYER	9-27-93	 TE connectivity
DIMENSIONS:		CHK	M.S. FEHER	9-27-93	
mm [INCHES]		APVD	A.HUNT	9-27-93	
TOLERANCES UNLESS OTHERWISE SPECIFIED:		NAME			
0 PLC	± -	PRODUCT SPEC		108-1484	
1 PLC	± -	APPLICATION SPEC		114-2140	
2 PLC	± 0.13 [.005]	SIZE		A2	
3 PLC	± -	CAGE CODE		00779	
4 PLC	± -	DRAWING NO		63717	
ANGLES	± - -	RESTRICTED TO		-	
MATERIAL		WEIGHT		-	
SEE TABLE		FINISH		0.002032 [.000080] MIN TIN PLATE	
		CUSTOMER DRAWING		SCALE 10:1 SHEET 1 of 1 REV G1	