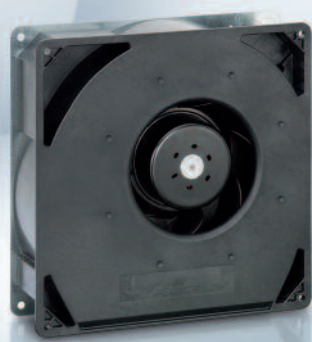


Max. 444 m³/h

DC centrifugal fans

□ 220 x 56 mm



- **Material:** Scroll housing: GRP¹⁾
Impeller: GRP¹⁾
Base plate: Sheet steel
- **Direction of air flow:** Axial: Intake,
Centrifugal: Exhaust
- **Connection:** Via single wires AWG 22, TR 64
48 V model: Flat plug
6.3 x 0.8 mm for ground
conductor
- **Highlights:** Smoothly operating 3-phase
fan drive
Backward-curved impeller
- **Weight:** 1.4 kg

- **Possible special versions:**
(See chapter DC fans - specials)
 - Speed signal
 - Go / NoGo alarm
 - Alarm with speed limit
 - External temperature sensor
 - Internal temperature sensor
 - PWM control input
 - Analog control input
 - Humidity protection
 - Degree of protection: IP 54

1) Fiberglass-reinforced plastic

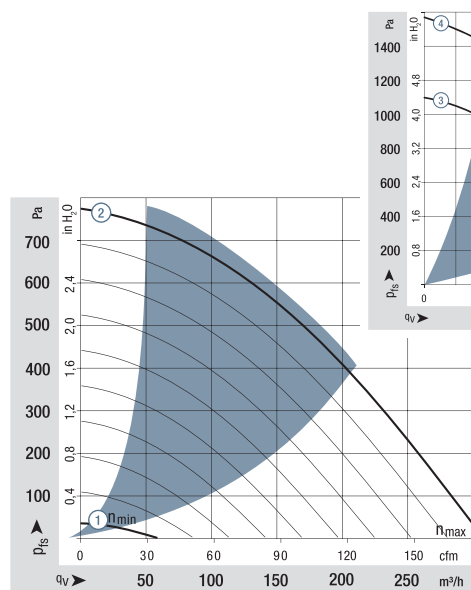
Series RG 160 NTD

Nominal data

| Type | Air flow | | Nominal voltage | | Voltage range | Sound power level | Sintec sleeve bearings Ball bearings | Power consumption | Nominal speed | Temperature range | Service life L ₁₀ (40 °C) ebm-papst standard | Service life L ₁₀ (T _{max}) ebm-papst standard | Life expectancy L ₁₀ (IPC (40 °C) see page 17 | Curve |
|-------------------------------------|-------------------|------|-----------------|---------|---------------|-------------------|-----------------------------------------|-------------------|---------------|-------------------|------------------------------------------------------------|------------------------------------------------------------------------|-------------------------------------------------------------|-------|
| | m ³ /h | cfm | VDC | VDC | | | | | | | | | | |
| Min. Max. RG 160-28/14 NTD... | 59 | 34.7 | 24 | 16...28 | — | 7.5 | ■ | 2.0 | 800 | -20...+60 | 55 000 / 35 000 | 92 500 | ① | |
| | 308 | 181 | | | | | | | | | | | | |
| RG 160-28/14 NTD | 308 | 181 | 24 | 16...28 | 7.5 | ■ | 64 | 4 200 | -20...+60 | 55 000 / 35 000 | 92 500 | ② | | |
| RG 160-28/14 NTDH | 370 | 218 | 24 | 16...28 | 7.8 | ■ | 101 | 5 000 | -20...+60 | 50 000 / 32 500 | 85 000 | ③ | | |
| Min. Max. RG 160-28/18 NTD... | 59 | 34.7 | 48 | 38...57 | — | 7.5 | ■ | 2.0 | 800 | -20...+70 | 55 000 / 27 500 | 92 500 | ① | |
| | 308 | 181 | | | | | | | | | | | | |
| RG 160-28/18 N/2 TDHHP* | 444 | 261 | 48 | 36...60 | 8.5 | ■ | 159 | 6 000 | -20...+65 | 40 000 / 22 500 | 67 500 | ④ | | |

Subject to change

Models RG 160-28/14 NTD... and RG 160-28/18 NTD... are available in customer-specific, custom-developed variants only. The figures indicated are technically feasible benchmark values. The fans can be specially adapted to your application with signal outputs and control inputs. *The specific service life is valid when an external capacitor is wired between the positive and negative wires. Please note the wiring suggestion.



Air performance measured according to: ISO 5801. Installation category A, without contact protection. Noise: Total sound power level L_{WA} ISO 103002 measured on a hemisphere with a radius of 2 m. Sound pressure level L_{pA} measured at 1 m distance from fan axis. The values given are applicable only under the specified measuring conditions and may differ depending on the installation conditions. In the event of deviation from the standard configuration, the parameters must be checked after installation! For detailed information see <http://www.ebmpapst.com/general conditions>

