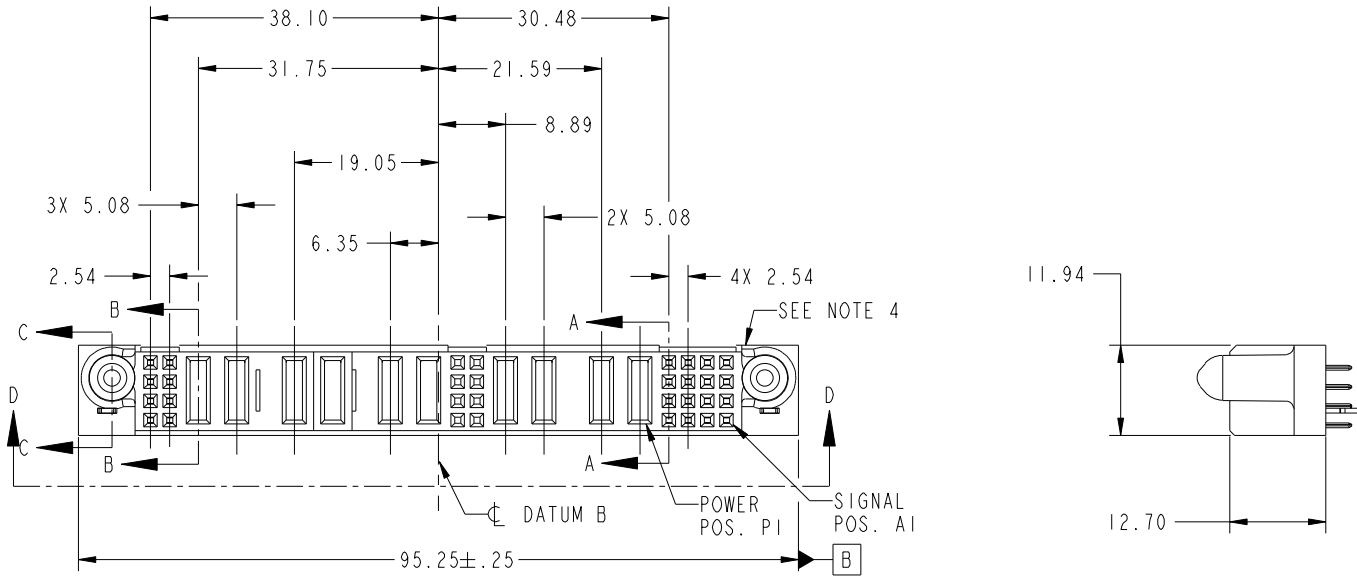


Tous droits strictement reserves. Reproduction ou communication a des tiers interdite sous quelque forme que ce soit sans autorisation ecrite du proprietaire. Propriete de c.FCI. Droits de reproduction FCI.

All rights strictly reserved. Reproduction or issue to third parties in any form whatever is not permitted without written authority from the proprietor. Property of FCI. Copyright FCI.



PRODUCT NUMBER	ROWS	SIG	POWER								SIG	POWER								SIG						
		E2 8 7	P10	P9	P8	P7	P6	P5	6 5	P4	P3	P2	P1	4 3 2 1	E1											
51940-007-- NOTE: 3	D C B A	HA	EE	PD	PD	PD	PD	PA	PA	XX	XX	XX	XX	PD	PD	PD	PD	EE	EE	EE	EE	EE	EE	EE	EE	HA



CODE	DIM "M" MATING LENGTH	CONTACT TYPE
E	[N/A]	SIGNAL
PA	[1.07]	POWER
PD	[2.34]	POWER
HA	[N/A]	HOLD-DOWN
X	OMITTED	OMITTED

mat'l code				SEE NOTE		tolerances unless otherwise specified		CUSTOMER		 www.fciconnect.com	
lir	ecn no.	dr	date	linear	0.X ±0.5		COPY		 title 16S + 4P + 8S + 6P + 8S VERTICAL SOLDER RECEPTACLE		
A	V20031	DAI	01/09/02		0.XX ±0.25		projection				
B	V20201	DAI	01/31/02	angles	0.XXX ±0.10		 MM		product family PwrBlade code 213		
C	V20634	JWS	04/03-02		0° ±2°		scale 1:1		size A 51940-007 sheet 1 of 4		
D	V03-0650	TAB	06/13/03	dr	D. INGRAM	01/09/02					
E	V03-1092	TAB	10/14/03	enrg	J. ALLISON	01/09/02					
F	DG05-0304	GuoJM	09/26/05	chr	J. ALLISON	01/09/02					
G	DG07-0498	JW	09/15/08	appd	J. ALLISON	01/09/02					
sheet index	revision sheet	G 1	G 2	G 3	G 4						

A

B

A

B

1 | 2

3

4

1 | 2

Pro/E

PDM: Rev:G

STATU: Released

Printed: Dec 20, 2010

cage code 2856

4

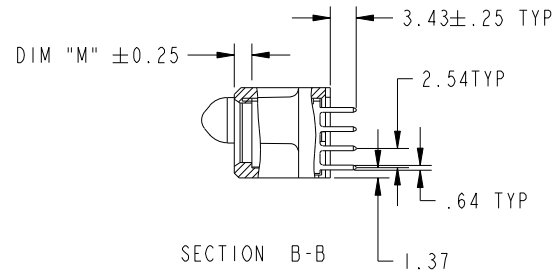
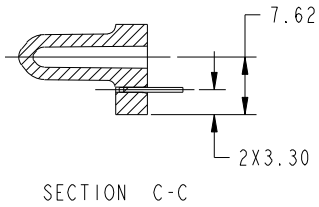
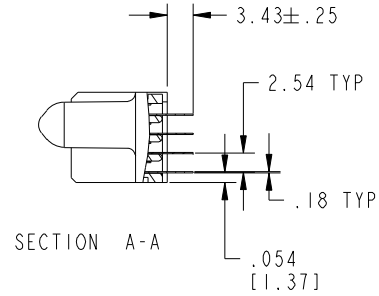
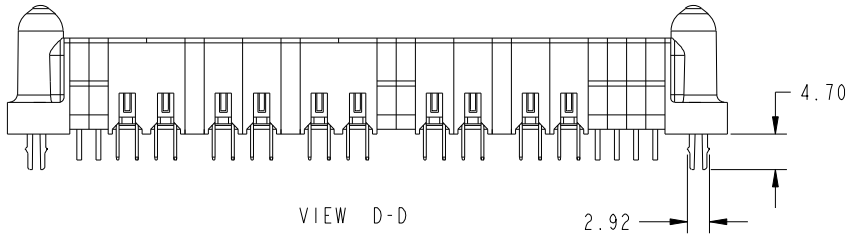
Tous droits strictement reserves. Reproduction ou communication a des tiers interdite sous quelque forme que ce soit sans autorisation ecrite du proprietaire. Propriete de c.FCI. Droits de reproduction FCI.

All rights strictly reserved. Reproduction or issue to third parties in any form whatever is not permitted without written authority from the proprietor. Property of FCI. Copyright FCI.



PRODUCT NUMBER

51940-007--
NOTE: 3



mat'l code		SEE NOTE		tolerances unless otherwise specified		CUSTOMER		 www.fciconnect.com	
lir	ecn no.	dr	date	linear	0.X ± 0.5	COPY		title	
G					0.XX ± 0.25	projection		16S + 4P + 8S + 6P + 8S	
				angles	0.XXX ± 0.10			VERTICAL SOLDER RECEPTACLE	
					0° ± 2°			product family	
				dr	D. INGRAM 01/09/02	MM		PwrBlade	
				engr	J. ALLISON 01/09/02	1:1		code	
				chr	J. ALLISON 01/09/02	scale		size	
				appd	J. ALLISON 01/09/02	A		dwg no	
sheet	revision							51940-007	
index	sheet							213	
								sheet	
								2	

cage code 2856

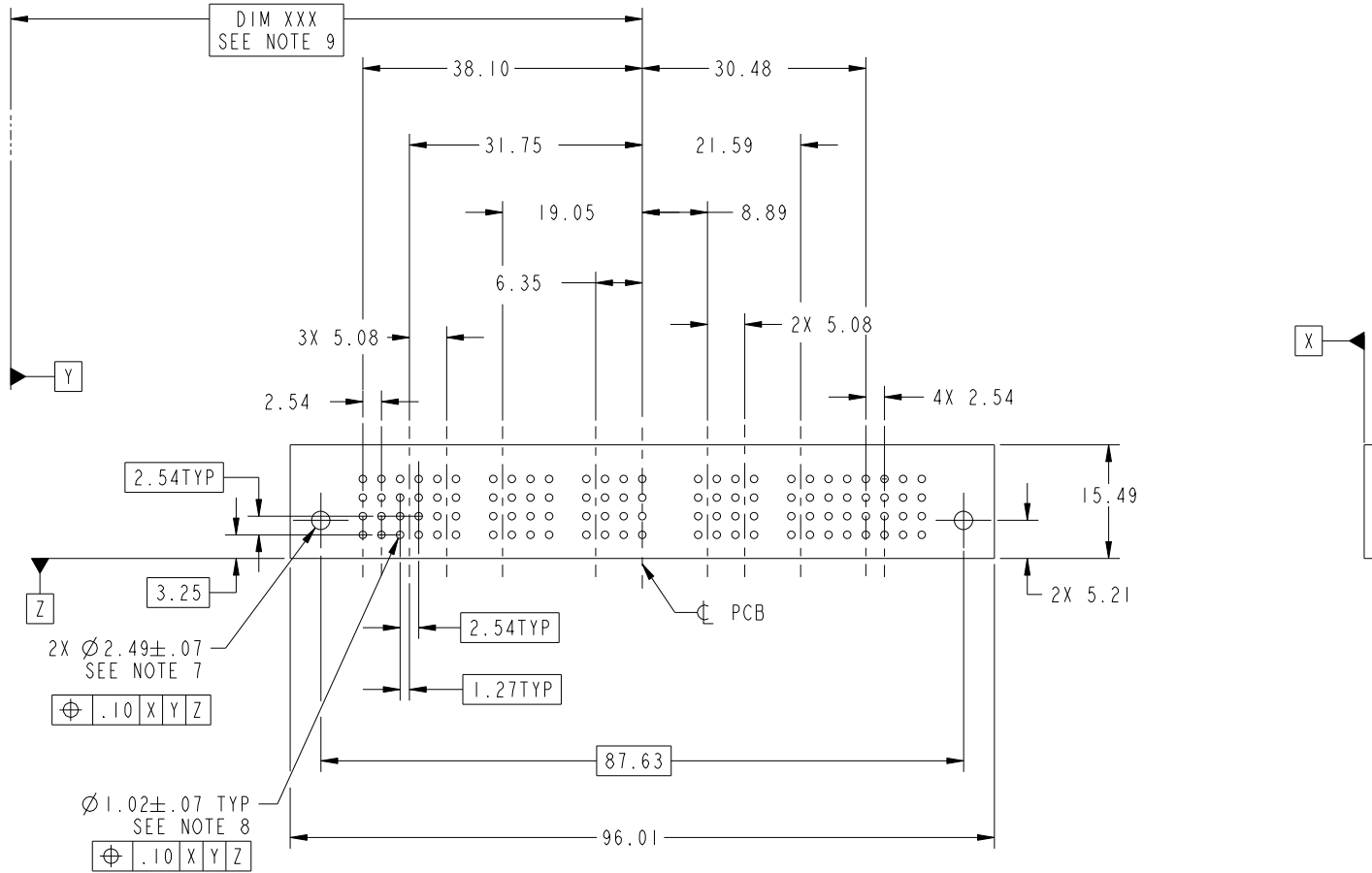
Tous droits strictement reserves. Reproduction ou communication a des tiers interdite sous quelque forme que ce soit sans autorisation ecrite du proprietaire. Propriete de c FCI. Droits de reproduction FCI.

All rights strictly reserved. Reproduction or issue to third parties in any form whatever is not permitted without written authority from the proprietor. Property of FCI. Copyright FCI.



PRODUCT NUMBER

51940-007--
NOTE: 3



mat'l code		SEE NOTE		tolerances unless otherwise specified		CUSTOMER		 www.fciconnect.com	
lir	ecn no.	dr	date	linear	0.X ± 0.5	COPY		title	
G				linear	0.XX ± 0.25	projection		16S + 4P + 8S + 6P + 8S	
				angles	0.XXX ± 0.10			VERTICAL SOLDER RECEPTACLE	
					0° ± 2°			product family	
				dr	D. INGRAM 01/09/02	MM		PwrBlade	
				enr	J. ALLISON 01/09/02			code	
				chr	J. ALLISON 01/09/02	scale		213	
				appd	J. ALLISON 01/09/02	1:1		sheet	
sheet index		revision sheet						3	
								A 51940-007	

cage code 2856

Pro/E

PDM: Rev:G

STATUS: Released

Printed: Dec 20, 2010

Tous droits strictement reserves. Reproduction ou communication a des tiers interdite sous quelque forme que ce soit sans autorisation ecrite du proprietaire. Propriete de c.FCI. Droits de reproduction FCI.

All rights strictly reserved. Reproduction or issue to third parties in any form whatever is not permitted without written authority from the proprietor. Property of FCI. Copyright FCI.



1 | 2

3

4

PRODUCT NUMBER
51940-007--
NOTE: 3

NOTES:

1. DIMENSIONS AND TOLERANCES ARE IN ACCORDANCE WITH ASME Y14.5M, 1994 UNLESS OTHERWISE SPECIFIED.

CONNECTORS NOTES:

2. HOUSING MATERIAL: UL 94 V-0 GLASS FILLED HIGH TEMP THERMO PLASTIC
POWER CONTACT MATERIAL: COPPER ALLOY
SIGNAL PIN MATERIAL: COPPER ALLOY

△3. PLATING:
SEE ITEM 5 & 6 IN PRINT 10064183 FOR PLATING SPEC OF 51940-007; 51940-007LF PRESPECTIVELY

4. "MANUFACTURER" NAME, P/N, AND DATE CODE TO APPEAR ON THIS SURFACE.

5. PRODUCT SPECIFICATION GS-12-149.

PCB - NOTES:

6. ALL HOLE DIAMETERS ARE FINISHED HOLE SIZE.

7. HOLD DOWN THROUGH HOLES ARE UNPLATED.

8. $\varnothing 1.151 \pm 0.025$ DRILLED HOLES PLATED WITH) 0.008 MIN SnPb OR Sn OVER 0.03 TO 0.08 Cu PLATING TO ACHIEVE $\varnothing 1.02 \pm .07$ HOLE.

9. "DIM XXX" TO BE DETERMINED BY THE CUSTOMER.

10. A △SYMBOL WILL BE NEXT TO ANY DIMENSION, VIEW, OR NOTE WHICH HAS BEEN MODIFIED WITH THE CURRENT DRAWING REVISION.

mat'l code				SEE NOTE		tolerances unless otherwise specified		CUSTOMER		 www.fciconnect.com	
lir	ecn no.	dr	date	linear	0.X ±0.5		COPY		title 16S + 4P + 8S + 6P + 8S VERTICAL SOLDER RECEPTACLE		
G					0.XX ±0.25		projection				
					0.XXX ±0.10						
				angles	0° ±2°				product family PwrBlade		code
				dr	D. INGRAM	01/09/02	scale		size	dwg no	213
				engr	J. ALLISON	01/09/02	1:1		A	51940-007	sheet
				chr	J. ALLISON	01/09/02					4
				appd	J. ALLISON	01/09/02					
sheet index	revision sheet										

1 | 2

Pro/E

PDM: Rev:G

STATUS: Released

Printed: Dec 20, 2010

cage code 2856

4