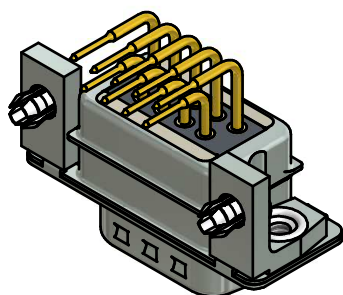


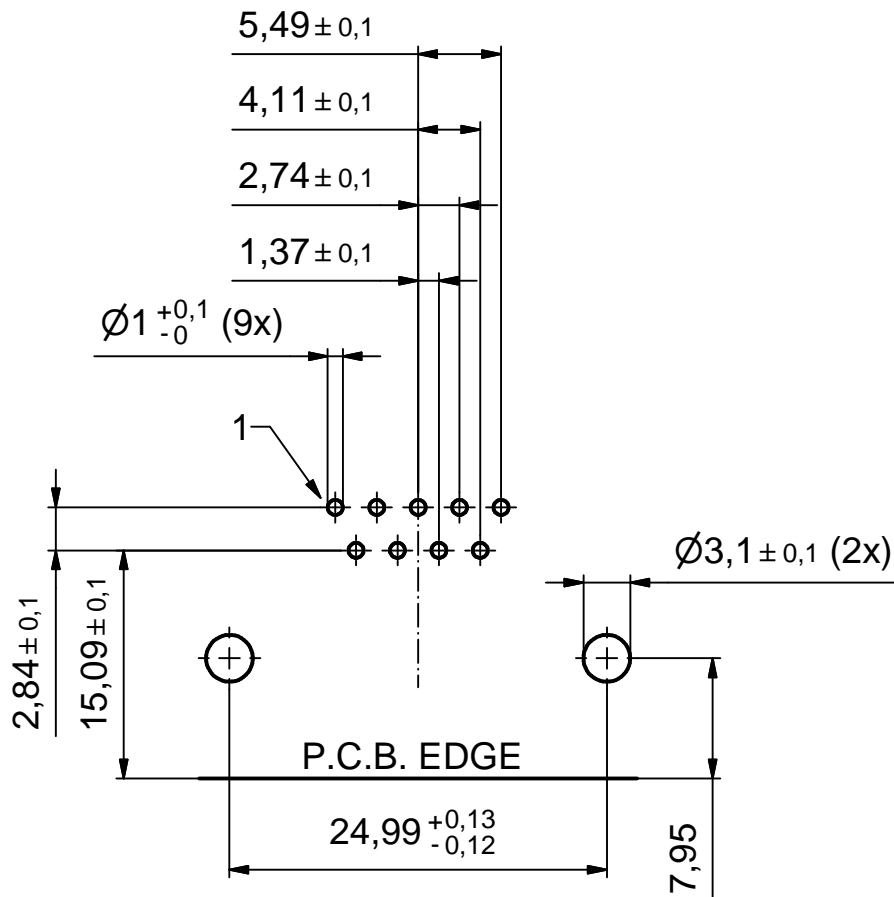
NOTES:

1. RoHS COMPLIANT
2. SUITABLE FOR WAVESOLDERING (SOLDER BATH TEMPERATURE 260°C FOR 5 SEC. AND SOLDER PREHEAT 100°C FOR 30 SEC.)
3. METALSHELLS: STEEL; min. 315µm TIN over 40-80µm NICKEL
4. INSULATORS: HIGH TEMPERATURE PLASTIC UL 94 V-0, BLACK
5. CONTACTS: COPPER ALLOY
PLATING: GOLD FLASH over NICKEL
CONTACT TAILS PRETINNED
6. METAL BRACKETS: ZINC DIE CAST; 300µm COPPER/40-120µm NICKEL/120-200µm TIN
7. THREADED INSERTS: COPPER ALLOY; min. 200µm TIN over 80µm NICKEL
8. CAPACITANCE: 2 x 830pF ± 20%
9. DIELECTRIC WITHSTANDING VOLTAGE: 300 VDC
10. P.C.B. HOLE DRILLINGS ON SHEET 2
11. MAXIMUM TORQUE VALUE FOR THREAD: 6 in.LB
12. CONNECTOR IS PART MARKED: 241A26280X CONEC ABC



Directive 2002/95/EC RoHS compliant

THIS DRAWING MAY NOT BE COPIED OR REPRODUCED IN ANY WAY, AND MAY NOT BE PASSED ON TO A THIRD PARTY WITHOUT WRITTEN PERMISSION. OWNERSHIP AND COPYRIGHT OF CONEC GmbH DO NOT ALTER CAD DRAWING BY HAND	tolerance		dim. in mm	scale: 2:1 (5:1)		
				material: see notes		
	drawn	11.05.12	Schmidt	title: D-SUB π Filter Male 90° 9pos., 0,590inch threaded insert, metal bracket and snap		
	appd.	11.05.12	Fischer			
	norm					
			d-old	dwg no:	DIN-A3	
a	Original				sh: 1	
rev.	description	date	name			
				part no:	241A26280X	



P.C.B. HOLE DRILLINGS
(P.C.B. TOP SIDE)

THIS DRAWING MAY NOT BE COPIED OR REPRODUCED IN ANY WAY, AND MAY NOT BE PASSED ON TO A THIRD PARTY WITHOUT WRITTEN PERMISSION.
OWNERSHIP AND COPYRIGHT OF CONEC GmbH

DO NOT ALTER CAD DRAWING BY HAND

rev.	description	date	name
a	Original		

tolerance		dim. in mm	
drawn	11.05.12	name	Schmidt
appd.	11:0512	name	Fischer
norm			
d-old			



scale:	2:1
material:	see sheet 1
title: P.C.B. HOLE DRILLINGS D-SUB π Filter Male 90° 9pos., 0,590inch threaded insert, metal bracket and snap	
dwg no:	DIN-A4
	sh: 2
part no:	see sheet 1

24K1A1373