

Compensated High Inductance Choke, 1-phase



Description

- Current compensated choke
- 1-phase choke
- Flexible wire
- Flange for mounting onto printed circuit board
- Fully potted resin

Standards

- EN 60938
- UL 1283
- CSA 22.2 no 8

Applications

- Placed in front of frequency converter
- Stepper motor drives
- UPS-systems
- Inverter

Weblinks

[pdf datasheet](#), [html-datasheet](#), [General Product Information](#), [Approvals](#), [CE declaration of conformity](#), [RoHS](#), [CHINA-RoHS](#), [REACH](#), [Distributor-Stock-Check](#), [Detailed request for product](#)

Technical Data

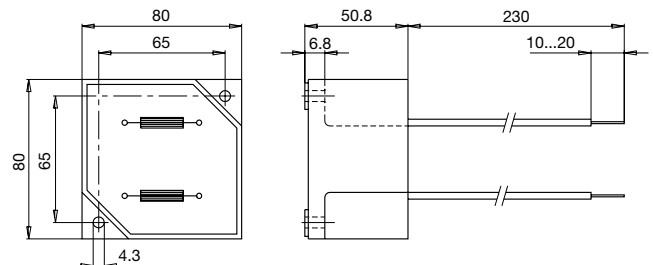
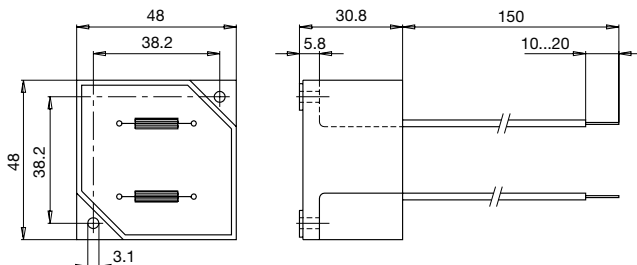
Rated voltage	up to 540 VAC	Test Voltage	2.5 kV, 50 Hz, 2 sec, winding to winding
	up to 760 VDC	Isolation Voltage	2.5 kV eff., 50 Hz, 2 sec, winding to ambient
Rated Current	4 - 20 A @ Ta 40 °C	Climatic Category	25/100/21 acc. to IEC 60068-1
Rated inductance	14 - 60 mH, Tol. -30% +50%	Allowable Operation Temp.	-25 °C to 100 °C
Power Operating Frequency	50 - 400 Hz		
Terminal Type	Flexible wire		
Weight	145 - 512 g		
Material: Housing	UL 94V-0		
Sealing Compound	UL 94V-0		

Detailed information on product approvals, code requirements, usage instructions and detailed test conditions can be looked up in [General Product Information](#)

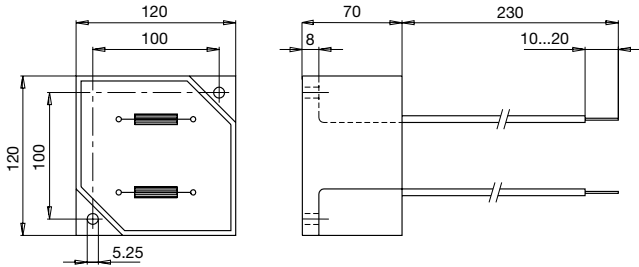
Dimension

Case 29-2W

Case 31-2W

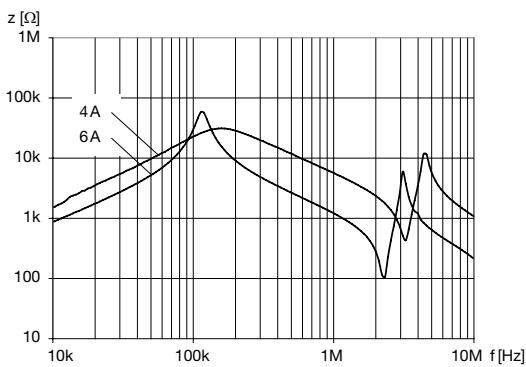


Case 33-2W

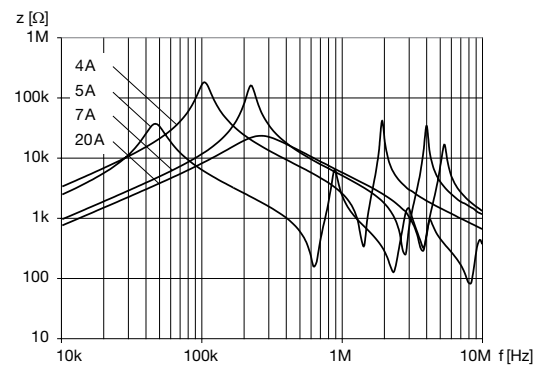


Impedance curves

DKLP-0229-xxxx



DKLP-023x-xxxx



All Variants

I_n [A]	L_n [mH]	R_{cu} [mΩ]	Power _{loss} [W]	f_{RES} [MHz]	Copper ϕ [mm]	Weight [g]	Housings	Packing unit [pcs.]	Order Number
4	30	96	3	0.2	0.8	145 g	29-2W	12	DKLP-0229-0430
6	14	46	3.3	0.3	1	145 g	29-2W	12	DKLP-0229-0614
4	60	250	8	0.1	0.71	477 g	31-2W	2	DKLP-0231-0460
5	40	126	6.3	0.048	0.9	505 g	31-2W	2	DKLP-0231-0540
7	20	62	6	0.18	1.12	512 g	31-2W	2	DKLP-0231-0720
20	12	19	15.2	0.16	1.8	180 g	33-2W	1	DKLP-0233-2012

Availability for all products can be searched real-time: <http://www.schurter.com/en/Stock-Check/Stock-Check-SCHURTER>