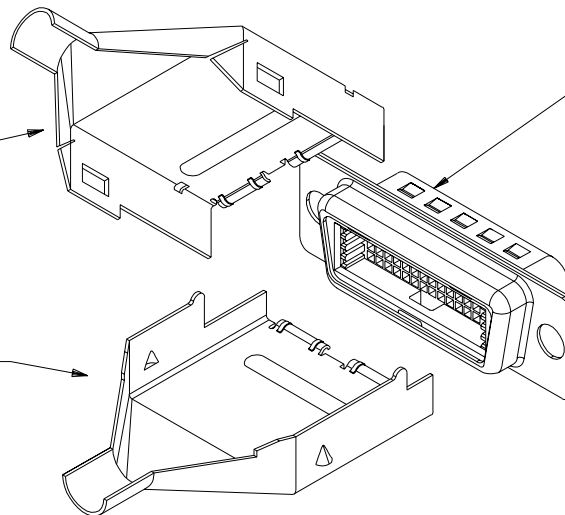


CLAMP SHELL
UPPER HALF

CLAMP SHELL
LOWER HALF



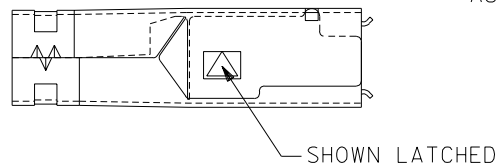
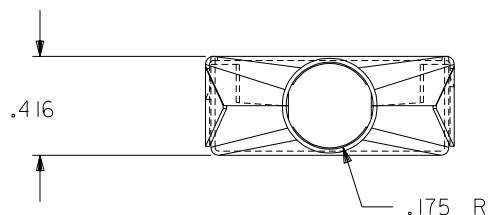
CONNECTOR SUB-ASSEMBLY
70929-2000 (PLUG SHOWN)
71691-0003 (RECEPTACLE)
PURCHASE SEPARATELY
(REFER TO SALES
DRAWING NUMBERS
SDA-70929-20** AND
SDA-71691-0003)

NOTES:

1. PLATING: 100 MICRONS MINIMUM BRIGHT NICKEL OVER COPPER FLASH (OPTIONAL).
2. CLAMP SHELLS TO BE PACKAGED PER PK-71245-001.
3. REFER TO APPLICATION SPECIFICATIONS AS-71691-9999 AND PS-70929.

NOTE FOR LEAD FREE CONVERSION:

THE PRIMARY SHIPPING CARTON WILL BE LABELED "COMPLIANT TO RoHS DIRECTIVE 2002/95/EC AND ELV ANNEX II OF DIRECTIVE 2000/53/EC". CARTONS WITHOUT THIS LABEL MAY CONTAIN PRODUCT WITH LEAD.



VIEWS SHOW CLAMP SHELLS ASSEMBLED

(SEE NOTE #2)

B	LEADFREE ECN# UCP2004-1998 DMORGAN 04/04/21
A3	ADDED PK SPEC. UDT2000-0654 SCHMIDGA 00/01/12
A2	ADDED GUSSETS PER ECN U8-0502 SCHMIDG 97/09/22
A1	ADDED CONN. NO. PER ECN U6-0322 DRS 09/06/95
A	FIRST RELEASE PER ECN# U3-1702 MOS 11.15.93

MFG. SH.	REV.	LTR.	REVISIONS
----------	------	------	-----------

DIMENSIONS SHOWN (METRIC) INCH UNLESS OTHERWISE SPECIFIED TOLERANCES: ANGULAR ± 1/2°		▽ = 0 ▼ = 0 REVISE ONLY ON CAD SYSTEM													
<table border="1"> <thead> <tr> <th></th> <th>INCH</th> <th>METRIC</th> </tr> </thead> <tbody> <tr> <td>3 PLACE</td> <td>± .015</td> <td>---</td> </tr> <tr> <td>2 PLACE</td> <td>±</td> <td>±</td> </tr> <tr> <td>1 PLACE</td> <td>---</td> <td>±</td> </tr> </tbody> </table>			INCH	METRIC	3 PLACE	± .015	---	2 PLACE	±	±	1 PLACE	---	±	TITLE CLAMP SHELL KIT .050" Q 60 CKT LFH I/O	
	INCH	METRIC													
3 PLACE	± .015	---													
2 PLACE	±	±													
1 PLACE	---	±													
DRAFT WHERE APPLICABLE MUST REMAIN WITHIN DIMENSIONS		molex MOLEX INCORPORATED SHEET NO. DATE LISLE, ILL. U.S.A. 60532 1 OF 1 09/03/93													
PART NO. 71245-2000		DRWG. NO. SDMS-71245-2000													
DRWG. BY: MOS	CHK'D. BY: BIXLER	FILE NAME: 71245S1 DGN	DIV. SIZE: CD B												
APP'D. BY: BIXLER	SCALE: 2: 1	THIS DRAWING CONTAINS INFORMATION THAT IS PROPRIETARY TO MOLEX INC. AND SHOULD NOT BE USED WITHOUT WRITTEN PERMISSION.													