

## 3.5x2.9mm Compact Tactile Switch

### Features

#### Optimized Mechanical Features

- Surface mount gull-wing terminal configurations
- Compatible with IR reflow and manual soldering
- Variety of operating force options

#### Optimized Contact System

- Excellent tactile feedback

#### Materials

- Silver coated terminals for better solderability
- High temperature materials (UL94V-0)
- RoHS compliant



## Electrical and Mechanical Specifications

#### Switch Contact Resistance

500 milliohms maximum

#### Insulation Resistance

100 Megohms minimum between insulated terminals

#### Maximum Rating

50mA, 12 VDC

#### Dielectric Strength

250 VAC for 1 minute between adjacent terminals

#### Operating Force

160 or 220 gf

#### Travel

0.2 mm

#### Operating Temperature

- 40°C to +85°C

#### Storage Temperature

- 40°C to +85°C

#### Actuator Strength

3 Kgf. maximum

#### Actuation Life

100,000 cycles

#### Allowable Solder Time

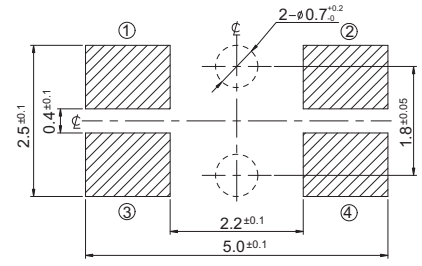
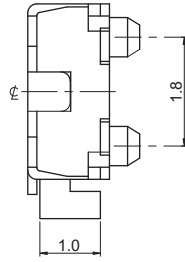
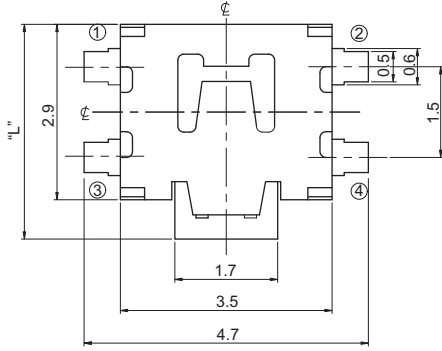
IR Reflow: Up to 5 seconds at 260°C

Manual soldering: Up to 3 seconds at 350°C

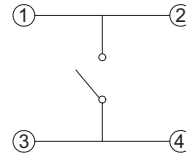
#### Packaging

Standard: Tape and reel packaging with 330mm diameter reel and 12mm wide plastic tape

## CTS SERIES 226EM1...(B) - Surface Mount Gull Wing Type1, No Ground Terminal



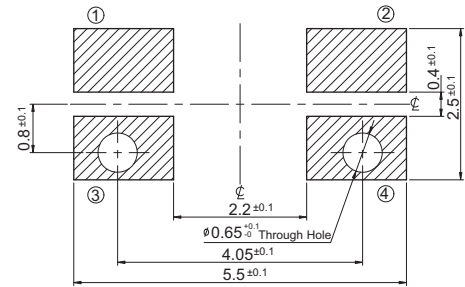
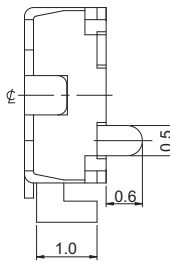
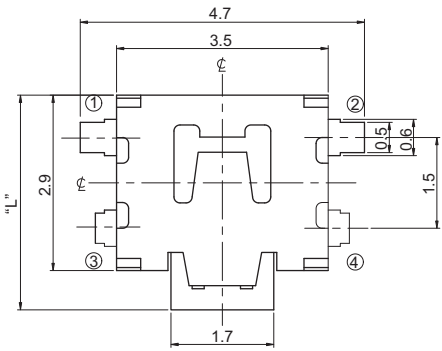
CIRCUIT DIAGRAM



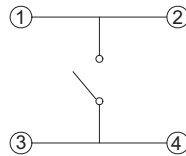
PCB LAYOUT

DIMENSION : mm  
STANDARD TOLERANCE :  
.X (1 PLACE) : ±0.2

## CTS SERIES 226EM2... - Surface Mount Gull Wing Type2, No Ground Terminal



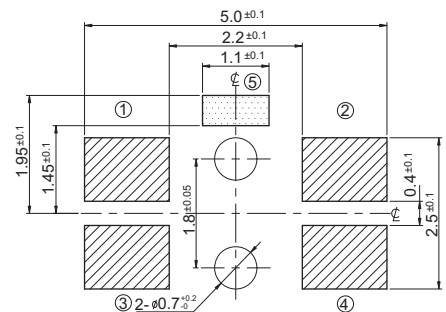
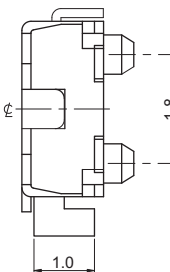
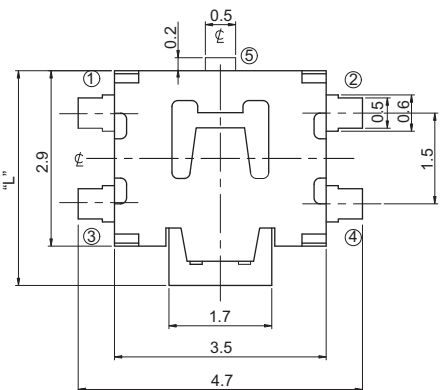
CIRCUIT DIAGRAM



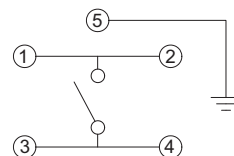
PCB LAYOUT

DIMENSION : mm  
STANDARD TOLERANCE :  
.X (1 PLACE) : ±0.2

## CTS SERIES 226EM1...(B)G - Surface Mount Gull Wing Type1, With Ground Terminal



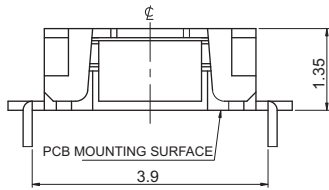
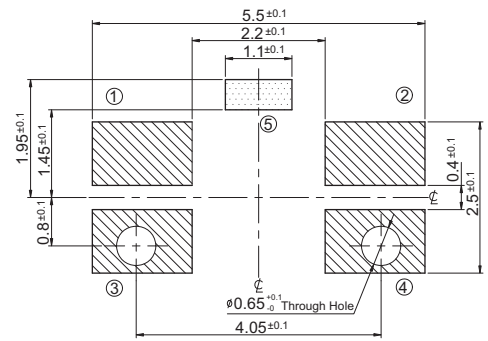
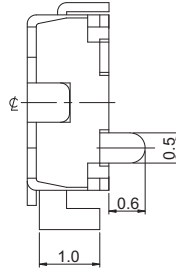
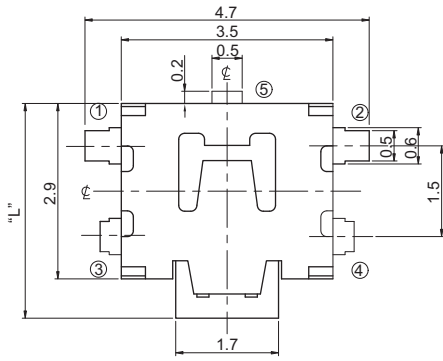
CIRCUIT DIAGRAM



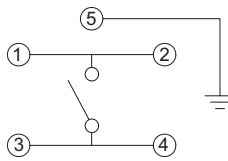
PCB LAYOUT

DIMENSION : mm  
STANDARD TOLERANCE :  
.X (1 PLACE) : ±0.2

# CTS SERIES 226EM2...G - Surface Mount Gull Wing Type2, With Ground Terminal



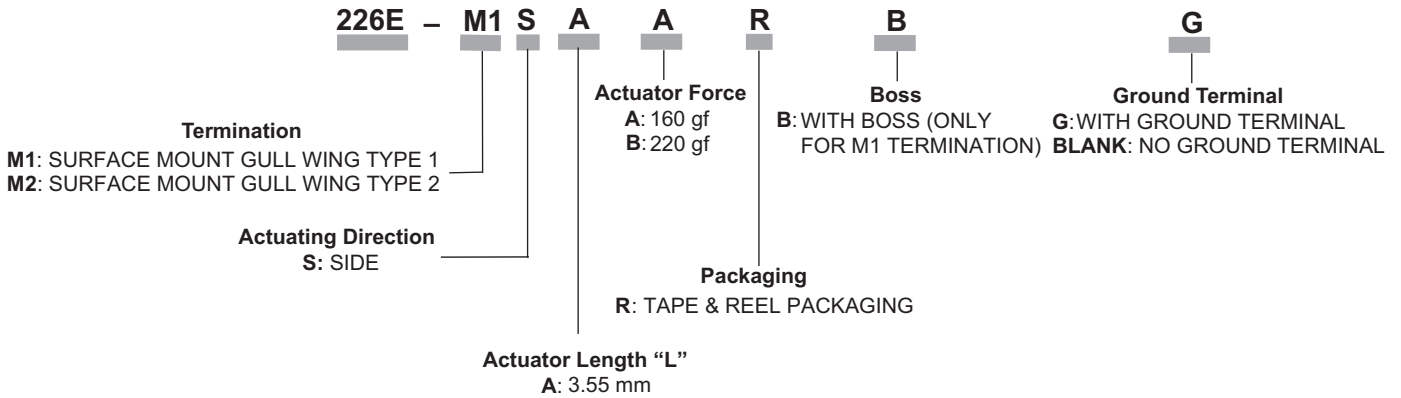
## CIRCUIT DIAGRAM



## PCB LAYOUT

DIMENSION : mm  
STANDARD TOLERANCE :  
X (1 PLACE) : ±0.2

## Ordering Information



## Note:

Consult CTS for other common features not listed.