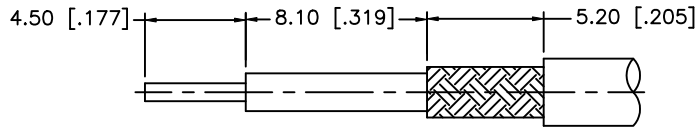
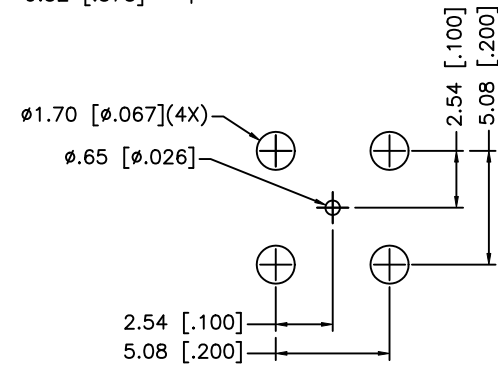
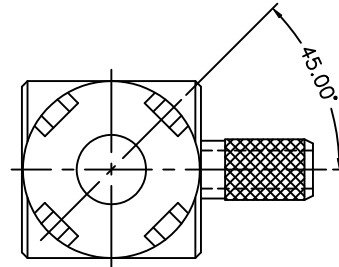
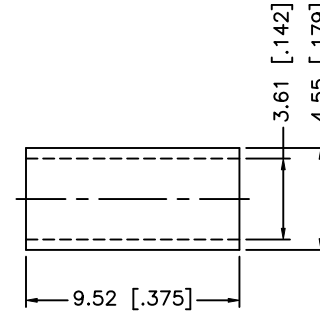
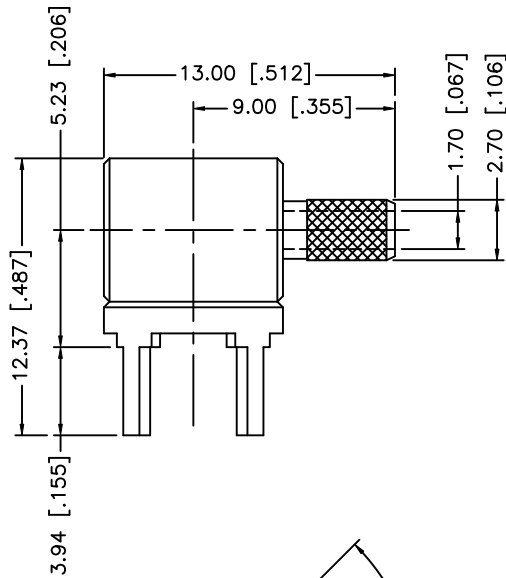
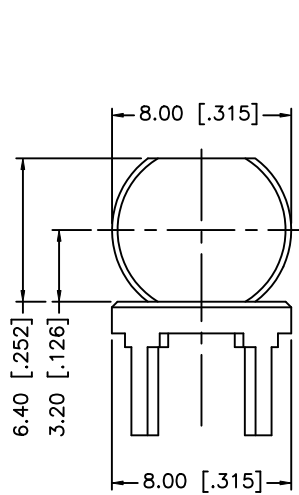


REV.	DATE	DESCRIPTION
NC	05/01/04	INITIAL RELEASE
A	04/02/08	REVISE CABLE DESCRIPTION



RECOMMENDED
CABLE STRIPPING DIM'S



RECOMMENDED
MOUNTING HOLES

NOTE:

1. CRIMPED FERRULE HEC CRIMP SIZE .151"

8				<small>UNLESS OTHERWISE SPECIFIED DIMENSIONS ARE IN MILLIMETERS. DIMENSIONS IN [] ARE IN INCHES AND FOR CUSTOMER REFERENCE ONLY.</small> <small>UNLESS OTHERWISE SPECIFIED TOLERANCES FOR MILLIMETERS ARE: 0.5 - 8mm ± 0.20mm 8 - 30mm ± 0.40mm 30 - 120mm ± 0.50mm</small> <small>UNLESS OTHERWISE SPECIFIED TOLERANCES FOR INCHES ARE: .020 - .315 = ± 0.007" .315 - 1.180 = ± 0.015" 1.180 - 4.724 = ± 0.020"</small>	APPROVALS	DATE	<h1 style="color: blue;">Amphenol Connex</h1>	
7			DRAWN		G.R.S.	04/02/08		PART DESCRIPTION R/A PCB CABLE TERMINAL (FOR RG-316/U DOUBLE BRAID)
6			CHECKED					
5				ISSUED			PART NO. 142269	
4				SHEET	1 OF 1			
3							DWG. NO. 142269.DWG	
2	FERRULE	COPPER	GOLD	1				REV. A
1	BODY	BRASS	GOLD	1			SIZE A	
	DESCRIPTION	MATERIAL	FINISH	QTY	DO NOT SCALE DRAWING	CAD FILE C:/142/142269.DWG	SCALE NA	