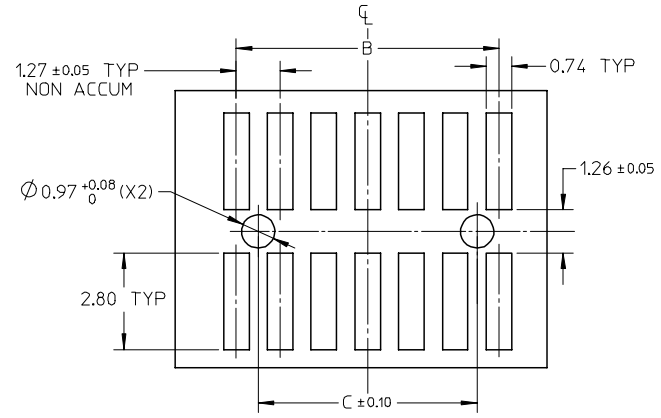
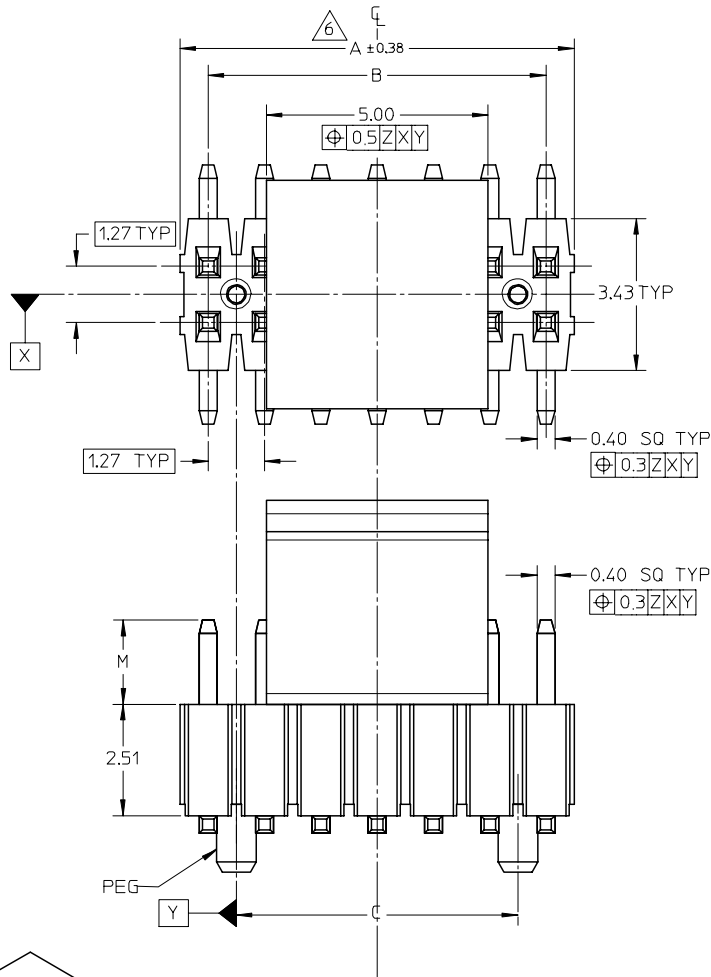
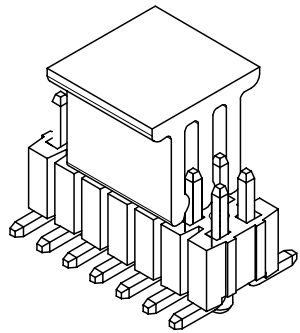
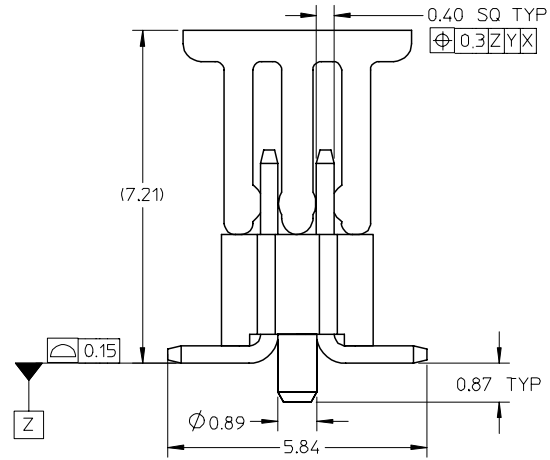


10 9 8 7 6 5 4 3 2 1



RECOMMENDED P.C.B. LAYOUT



ADD. OPTION	2007/10/10
EC NO: S2008-0216	2007/10/11
DRWN: CWLAM	2007/10/11
CHKD: KWLEE	2007/10/29
APPR: KWLEE	
REV	DESCRIPTION
A2	

QUALITY SYMBOLS	▽=0
	∇=0

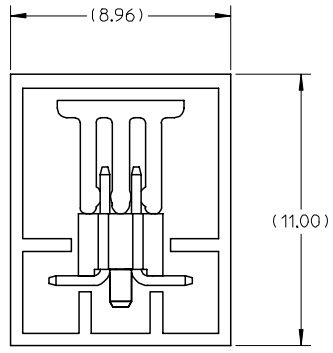
GENERAL TOLERANCES (UNLESS SPECIFIED)	
	mm INCH
4 PLACES	± --- ± ---
3 PLACES	± --- ± ---
2 PLACES	± 0.20 ± ---
1 PLACE	± --- ± ---
ANGULAR ± 3 °	
DRAFT WHERE APPLICABLE MUST REMAIN WITHIN DIMENSIONS	

DIMENSION STYLE		SCALE		DESIGN UNITS		THIRD ANGLE PROJECTION	
MM ONLY		NTS		METRIC			
DRAWN BY	DATE	TITLE					
LNG	2006/02/14	1.27MM PITCH SMT HEADER WITH PEG AND CAP PACKED IN TUBE					
CHECKED BY	DATE						
BOKOK	2006/03/27						
APPROVED BY	DATE						
PTL IM	2006/03/29						
MATERIAL NO.		DOCUMENT NO.		SHEET NO.			
				1 OF 5			
SIZE	THIS DRAWING CONTAINS INFORMATION THAT IS PROPRIETARY TO MOLEX INCORPORATED AND SHOULD NOT BE USED WITHOUT WRITTEN PERMISSION						
A3	SEE TABLE						

MOLEX INCORPORATED		SD-87933-014	
--------------------	--	--------------	--

9 8 7 6 5 4 3 2 1

CKT. SIZE	DIMENSION		
	A	B	C
10	6.35	5.08	3.81
20	12.70	11.43	10.16
30	19.05	17.78	16.51
40	25.40	24.13	22.86
50	31.75	30.48	29.21
60	38.10	36.83	35.56
68	43.18	41.91	40.64
70	44.45	43.18	41.91
80	50.80	49.53	48.26
90	57.15	55.88	54.61
100	63.50	62.23	60.96



PART W/PEG & CAP
PACKED IN TUBE

NOTE:

- MATERIAL: HOUSING: LCP GLASS FILLED,
COLOR: BLACK
TERMINAL: COPPER ALLOY
- PIN PUSHOUT FORCE: 0,4KG MIN. IN EITHER DIRECTION.
- PLATING FINISH:
 - 2 MNCH MIN. GOLD FLASH OVERALL,
50 MNCH MIN. NICKEL UNDERPLATED
 - 100 MNCH MIN. TIN OVERALL,
50 MNCH MIN. NICKEL UNDERPLATED
 - 30 MNCH MIN. GOLD PLATE IN SELECTED AREA AND
80 MNCH MIN. TIN IN SELECTED AREA OVER,
50 MNCH MIN. NICKEL UNDERPLATED
 - 15 MNCH MIN. GOLD PLATE IN SELECTED AREA AND
80 MNCH MIN. TIN IN SELECTED AREA OVER,
50 MNCH MIN. NICKEL UNDERPLATED
- THE ABOVE 14 CKT SHOWN IS FOR ILLUSTRATION ONLY.
- PARTS TO BE PACKED IN TUBE.
- POSITION OF CAP TO BE LOCATED AT THE CENTER OF DIMENSION (A) REGARDLESS OF CIRCUIT SIZE
- IRREGULAR CIRCUIT CUTOFF WITHIN BREAKAWAY SECTION IS PERMISSIBLE. CUTTING OR CHIPPING OF THE MAIN BODY IS NOT ACCEPTABLE.
- PACKAGING SPECIFICATION REFER TO
TUBE : PK-89990-565

ADD. OPTION EC NO: S2008-0216 DRWN: CWLAM CHKD: KWLEE APPR: KWLEE	QUALITY SYMBOLS ▽=0 ∇=0	GENERAL TOLERANCES (UNLESS SPECIFIED)		DIMENSION STYLE MM ONLY		SCALE NTS	DESIGN UNITS METRIC	THIRD ANGLE PROJECTION		
			mm	INCH	DRAWN BY LNG	DATE 2006/02/14	TITLE 1.27MM PITCH SMT HEADER WITH PEG AND CAP PACKED IN TUBE			
		4 PLACES	± ---	± ---	CHECKED BY BOKOK	DATE 2006/03/27	APPROVED BY PTL IM			
		3 PLACES	± ---	± ---	DATE 2006/03/29	MOLEX INCORPORATED				
2 PLACES	± 0.20	± ---	DRAFT WHERE APPLICABLE MUST REMAIN WITHIN DIMENSIONS		SEE TABLE		DOCUMENT NO. SD-87933-014	SHEET NO. 2 OF 5		
1 PLACE	± ---	± ---					MATERIAL NO.			
							SIZE A3			
					THIS DRAWING CONTAINS INFORMATION THAT IS PROPRIETARY TO MOLEX INCORPORATED AND SHOULD NOT BE USED WITHOUT WRITTEN PERMISSION					

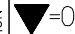
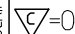

	10	9	8	7	6	5	4	3	2	1					
F	P/N WITH CAP PACKED IN TUBE	PEG	CKT SIZE	PLATING OPTIONS	DIM. M	P/N WITH CAP PACKED IN TUBE	PEG	CKT SIZE	PLATING OPTIONS	DIM. M	P/N WITH CAP PACKED IN TUBE	PEG	CKT SIZE	PLATING OPTIONS	DIM. M
		87933-1007	N	10	1	1.65	87933-2007	N	20	1	1.65	87933-3007	N	30	1
	87933-1008	N	10	2	1.65	87933-2008	N	20	2	1.65	87933-3008	N	30	2	1.65
	87933-1009	N	10	3	1.65	87933-2009	N	20	3	1.65	87933-3009	N	30	3	1.65
	87933-1010	N	10	4	1.65	87933-2010	N	20	4	1.65	87933-3010	N	30	4	1.65
E	87933-1011	N	10	1	1.91	87933-2011	N	20	1	1.91	87933-3011	N	30	1	1.91
	87933-1012	N	10	2	1.91	87933-2012	N	20	2	1.91	87933-3012	N	30	2	1.91
	87933-1013	N	10	3	1.91	87933-2013	N	20	3	1.91	87933-3013	N	30	3	1.91
	87933-1014	N	10	4	1.91	87933-2014	N	20	4	1.91	87933-3014	N	30	4	1.91
	87933-1015	N	10	1	3.05	87933-2015	N	20	1	3.05	87933-3015	N	30	1	3.05
D	87933-1016	N	10	2	3.05	87933-2016	N	20	2	3.05	87933-3016	N	30	2	3.05
	87933-1017	N	10	3	3.05	87933-2017	N	20	3	3.05	87933-3017	N	30	3	3.05
	87933-1018	N	10	4	3.05	87933-2018	N	20	4	3.05	87933-3018	N	30	4	3.05

C	P/N WITH CAP PACKED IN TUBE	PEG	CKT SIZE	PLATING OPTIONS	DIM. M
		87933-4007	N	40	1
	87933-4008	N	40	2	1.65
	87933-4009	N	40	3	1.65
	87933-4010	N	40	4	1.65
B	87933-4011	N	40	1	1.91
	87933-4012	N	40	2	1.91
	87933-4013	N	40	3	1.91
	87933-4014	N	40	4	1.91
A	87933-4015	N	40	1	3.05
	87933-4016	N	40	2	3.05
	87933-4017	N	40	3	3.05
	87933-4018	N	40	4	3.05

ADD. OPTION EC NO: S2008-0216 DRWN: CWLAM CHKD: KWLEE APPR: KWLEE	QUALITY SYMBOLS 	GENERAL TOLERANCES (UNLESS SPECIFIED)		DIMENSION STYLE MM ONLY		SCALE NTS	DESIGN UNITS METRIC	THIRD ANGLE PROJECTION	
				DRAWN BY DATE	TITLE 1.27MM PITCH SMT HEADER WITH PEG AND CAP PACKED IN TUBE				
				CHECKED BY DATE	MOLEX INCORPORATED				
				APPROVED BY DATE	MOLEX INCORPORATED				
		DRAFT WHERE APPLICABLE MUST REMAIN WITHIN DIMENSIONS		SEE TABLE		DOCUMENT NO. SD-87933-014		SHEET NO. 3 OF 5	
A2				SIZE A3		THIS DRAWING CONTAINS INFORMATION THAT IS PROPRIETARY TO MOLEX INCORPORATED AND SHOULD NOT BE USED WITHOUT WRITTEN PERMISSION			

	10	9	8	7	6	5	4	3	2	1					
F	P/N WITH CAP PACKED IN TUBE	PEG	CKT SIZE	PLATING OPTIONS	DIM. M	P/N WITH CAP PACKED IN TUBE	PEG	CKT SIZE	PLATING OPTIONS	DIM. M	P/N WITH CAP PACKED IN TUBE	PEG	CKT SIZE	PLATING OPTIONS	DIM. M
		87933-5007	Y	50	1	1.65	87933-6007	N	60	1	1.65	87933-6807	N	68	1
	87933-5008	Y	50	2	1.65	87933-6008	N	60	2	1.65	87933-6808	N	68	2	1.65
	87933-5009	Y	50	3	1.65	87933-6009	N	60	3	1.65	87933-6809	N	68	3	1.65
	87933-5010	Y	50	4	1.65	87933-6010	N	60	4	1.65	87933-6810	N	68	4	1.65
E	87933-5011	Y	50	1	1.91	87933-6011	N	60	1	1.91	87933-6811	N	68	1	1.91
	87933-5012	Y	50	2	1.91	87933-6012	N	60	2	1.91	87933-6812	N	68	2	1.91
	87933-5013	Y	50	3	1.91	87933-6013	N	60	3	1.91	87933-6813	N	68	3	1.91
	87933-5014	Y	50	4	1.91	87933-6014	N	60	4	1.91	87933-6814	N	68	4	1.91
	87933-5015	Y	50	1	3.05	87933-6015	N	60	1	3.05	87933-6815	N	68	1	3.05
D	87933-5016	Y	50	2	3.05	87933-6016	N	60	2	3.05	87933-6816	N	68	2	3.05
	87933-5017	Y	50	3	3.05	87933-6017	N	60	3	3.05	87933-6817	N	68	3	3.05
	87933-5018	Y	50	4	3.05	87933-6018	N	60	4	3.05	87933-6818	N	68	4	3.05

C	P/N WITH CAP PACKED IN TUBE	PEG	CKT SIZE	PLATING OPTIONS	DIM. M
		87933-7007	N	70	1
	87933-7008	N	70	2	1.65
	87933-7009	N	70	3	1.65
	87933-7010	N	70	4	1.65
B	87933-7011	N	70	1	1.91
	87933-7012	N	70	2	1.91
	87933-7013	N	70	3	1.91
	87933-7014	N	70	4	1.91
A	87933-7015	N	70	1	3.05
	87933-7016	N	70	2	3.05
	87933-7017	N	70	3	3.05
	87933-7018	N	70	4	3.05

ADD. OPTION EC NO: S2008-0216 DRWN: CWLAM CHKD: KWLEE APPR: KWLEE	QUALITY SYMBOLS  = 0  = 0.20	GENERAL TOLERANCES (UNLESS SPECIFIED)		DIMENSION STYLE MM ONLY		SCALE NTS	DESIGN UNITS METRIC	 THIRD ANGLE PROJECTION	
				DRAWN BY DATE BOKOK 2006/02/14		TITLE 1.27MM PITCH SMT HEADER WITH PEG AND CAP PACKED IN TUBE			
				CHECKED BY DATE BOKOK 2006/03/27		MOLEX INCORPORATED			
				APPROVED BY DATE PTL IM 2006/03/29		MATERIAL NO.		DOCUMENT NO. SD-87933-014	
A2		DRAFT WHERE APPLICABLE MUST REMAIN WITHIN DIMENSIONS		SEE TABLE		THIS DRAWING CONTAINS INFORMATION THAT IS PROPRIETARY TO MOLEX INCORPORATED AND SHOULD NOT BE USED WITHOUT WRITTEN PERMISSION			

	10	9	8	7	6	5	4	3	2	1					
F	P/N WITH CAP PACKED IN TUBE	PEG	CKT SIZE	PLATING OPTIONS	DIM. M	P/N WITH CAP PACKED IN TUBE	PEG	CKT SIZE	PLATING OPTIONS	DIM. M	P/N WITH CAP PACKED IN TUBE	PEG	CKT SIZE	PLATING OPTIONS	DIM. M
		87933-8007	N	80	1	1.65	87933-9007	N	90	1	1.65	87933-1207	N	100	1
	87933-8008	N	80	2	1.65	87933-9008	N	90	2	1.65	87933-1208	N	100	2	1.65
	87933-8009	N	80	3	1.65	87933-9009	N	90	3	1.65	87933-1209	N	100	3	1.65
	87933-8010	N	80	4	1.65	87933-9010	N	90	4	1.65	87933-1211	N	100	4	1.65
	87933-8011	N	80	1	1.91	87933-9011	N	90	1	1.91	87933-1211	N	100	1	1.91
	87933-8012	N	80	2	1.91	87933-9012	N	90	2	1.91	87933-1212	N	100	2	1.91
E	87933-8013	N	80	3	1.91	87933-9013	N	90	3	1.91	87933-1213	N	100	3	1.91
	87933-8014	N	80	4	1.91	87933-9014	N	90	4	1.91	87933-1214	N	100	4	1.91
	87933-8015	N	80	1	3.05	87933-9015	N	90	1	3.05	87933-1215	N	100	1	3.05
	87933-8016	N	80	2	3.05	87933-9016	N	90	2	3.05	87933-1216	N	100	2	3.05
	87933-8017	N	80	3	3.05	87933-9017	N	90	3	3.05	87933-1217	N	100	3	3.05
D	87933-8018	N	80	4	3.05	87933-9018	N	90	4	3.05	87933-1218	N	100	4	3.05



A	ADD. OPTION EC NO: S2008-0216 DRWN: CWLAM CHKD: KWLEE APPR: KWLEE	2007/10/10 2007/10/11 2007/10/29	DESCRIPTION REV	QUALITY SYMBOLS ▽=0 ◻=0	GENERAL TOLERANCES (UNLESS SPECIFIED)	DIMENSION STYLE MM ONLY	SCALE NTS	DESIGN UNITS METRIC	THIRD ANGLE PROJECTION	TITLE 1.27MM PITCH SMT HEADER WITH PEG AND CAP PACKED IN TUBE MOLEX INCORPORATED DOCUMENT NO. SD-87933-014	SHEET NO. 5 OF 5
					4 PLACES ± --- ± ---	DRAWN BY LNG	DATE 2006/02/14				
					3 PLACES ± --- ± ---	CHECKED BY BOKOK	DATE 2006/03/27				
					2 PLACES ± 0.20 ± ---	APPROVED BY PTL IM	DATE 2006/03/29				
		1 PLACE ± --- ± ---	ANGULAR ± 3 °	MATERIAL NO.	SEE TABLE						
				DRAFT WHERE APPLICABLE MUST REMAIN WITHIN DIMENSIONS	SIZE A3	THIS DRAWING CONTAINS INFORMATION THAT IS PROPRIETARY TO MOLEX INCORPORATED AND SHOULD NOT BE USED WITHOUT WRITTEN PERMISSION					