



## xPico® Wi-Fi® Embedded Device Server Evaluation Board Quick Start Guide

## Copyright and Trademark

© 2014 Lantronix, Inc.. All rights reserved. No part of the contents of this book may be transmitted or reproduced in any form or by any means without the written permission of Lantronix.

*Lantronix* and *xPico* are registered trademarks of Lantronix, Inc. in the United States and other countries.

*Windows* and *Internet Explorer* are registered trademarks of Microsoft Corporation. *Wi-Fi* is a registered trademark of the Wi-Fi Alliance Corporation. *Firefox* is a registered trademark of Mozilla Foundation. *Chrome* is a trademark of Google, Inc. *Safari* is a registered trademark of Apple Inc. All other trademarks, servicemarks and trade names are the property of their respective owners.

## Contacts

### Lantronix, Inc.

167 Technology Drive  
Irvine, CA 92618, U.S.A.  
Toll Free: 800-526-8766  
Phone: 949-453-3990  
Fax: 949-453-3995

### Technical Support

Online: <http://www.lantronix.com/support>

### Sales Offices

For a current list of our domestic and international sales offices go to the Lantronix web site at [www.lantronix.com/about/contact](http://www.lantronix.com/about/contact).

## Disclaimer and Revisions

This equipment has been tested and found to comply with the limits for a Class B digital device, pursuant to Part 15 of the FCC Rules. These limits are designed to provide reasonable protection against harmful interference in a residential installation. This equipment generates, uses, and can radiate radio frequency energy and, if not installed and used in accordance with the instructions, may cause harmful interference to radio communications. However, there is no guarantee that interference will not occur in a particular installation. If this equipment does cause harmful interference to radio or television reception, which can be determined by turning the equipment off and on, the user is encouraged to try to correct the interference by one of the following measures:

- ◆ Reorient or relocate the receiving antenna.
- ◆ Increase the separation between the equipment and receiver.
- ◆ Connect the equipment into an outlet on a circuit different from that to which the receiver is connected.
- ◆ Consult the dealer or an experienced radio/TV technician for help.

This device complies with Part 15 of the FCC Rules. Operation is subject to the following two conditions: (1) This device may not cause harmful interference, and (2) this device must accept any interference received, including interference that may cause undesired operation. This device is intended only for OEM Integrators.

## Revision History

Date	Rev.	Comments
June 2013	A	Initial document.
December 2014	B	Updated with a new model of the xPico Wi-Fi module.

## Table of Contents

Copyright and Trademark	2
Contacts	2
Disclaimer and Revisions	2
Revision History	2
Introduction	4
Evaluation Kit Contents	4
XPW100100K-01: xPico Wi-Fi with Board to Board Connector	4
XPCW1003100K: xPico Wi-Fi SMT with on-module antenna.	5
What You Need to Know	7
Hardware Address	7
Evaluation Kit Layout	7
Connecting an xPico Wi-Fi Device	9
Connecting Power to the xPico Wi-Fi Evaluation Module	9
Wireless Connection Using Internal Soft AP	9
QuickConnect	12
Reference Documentation	15

## Introduction

Thank you for purchasing the Lantronix® xPico® Wi-Fi® embedded device server evaluation kit. This evaluation kit is designed to provide full access to all the input/output ports of the xPico Wi-Fi (XPW1001000-01, XPCW1003100) and xPico (wired Ethernet) (XPC1001000-01) modules.

This quick start guide describes the procedures for initial connection to the xPico Wi-Fi device through a network connection.

Once a connection is established you can use the Web Manager for configuration and control.

For the latest of this product document, please check our online documentation at [www.lantronix.com/support/documentation](http://www.lantronix.com/support/documentation).

## Evaluation Kit Contents

The evaluation kit comes fitted with an xPico device server module. The type of module depends on the evaluation kit part number.

### **XPW100100K-01: xPico Wi-Fi with Board to Board Connector**

The XPW100100K-01 comes with all that a user needs to evaluate the xPico Wi-Fi Device Server module.

- ◆ xPico Evaluation Board with xPico Wi-Fi module (XPW1001000-01)
- ◆ 2dBi, Whip Antenna with RP SMA connector (930-033-R)
- ◆ 1.5 to 2.5dBi, PCB Strip Antenna with 50mm U.FL cable (930-099-R)
- ◆ 5 Vdc Wall-mount power supply AC/DC, 1A with mini-USB connector

**Figure 1: Evaluation Kit Contents**



## XPCW1002100K: xPico Wi-Fi SMT W1002 , with U.FL

The XPCW1002100 comes with all that a user needs to evaluate the xPico Wi-Fi SMT W1002 Device Server module.

- ◆ xPico Evaluation Board with xPico Wi-Fi SMT module (XPCW1002100)
- ◆ 2dBi, Whip Antenna with RP SMA connector (930-033-R)
- ◆ 1.5 to 2.5dBi, PCB Strip Antenna with 50mm U.FL cable (930-099-R)
- ◆ 5Vdc Wall-mount power supply AC/DC, 1A with mini-USB connector

**Figure 2: Evaluation Kit Contents - XPCW1002100 Model**

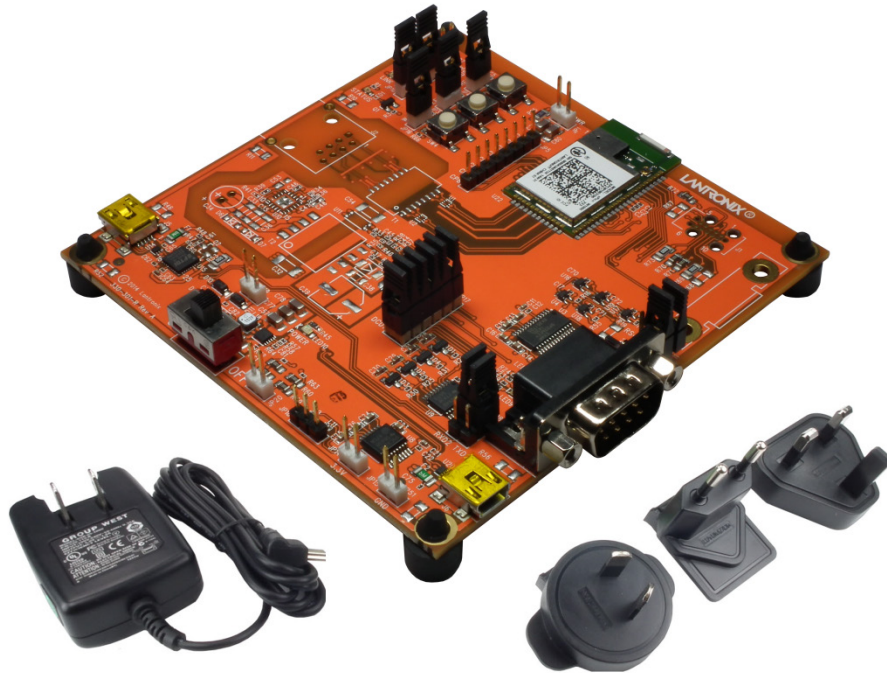


### **XPCW1003100K: xPico Wi-Fi SMT W1003 with on-module antenna.**

The XPCW1003100K comes with all that a user needs to evaluate the xPico Wi-Fi SMT Device Server module.

- ◆ xPico Evaluation Board with xPico Wi-Fi SMT W1003 module (XPCW1003100)
- ◆ 5 Vdc Wall-mount power supply AC/DC, 1A with mini-USB connector

**Figure 3: Evaluation Kit Contents - XPCW1003100 Model**



## What You Need to Know

### Hardware Address

The unit hardware address (also known as MAC address) is also used as the unique Serial Number to uniquely identify the unit. This number is located on the product label in the format **SN: YYYYYYXXXXXX-**, where the YY represents the Lantronix OUI and XXs are unique numbers within that OUI namespace assigned to the product.

Hardware Address: \_\_\_\_\_

## Evaluation Kit Layout

The following is the layout of the xPico evaluation board and the xPico Wi-Fi SMT evaluation board. The XPW100100K-01 is illustrated below.

Figure 4: xPico Wi-Fi Evaluation Board Layout

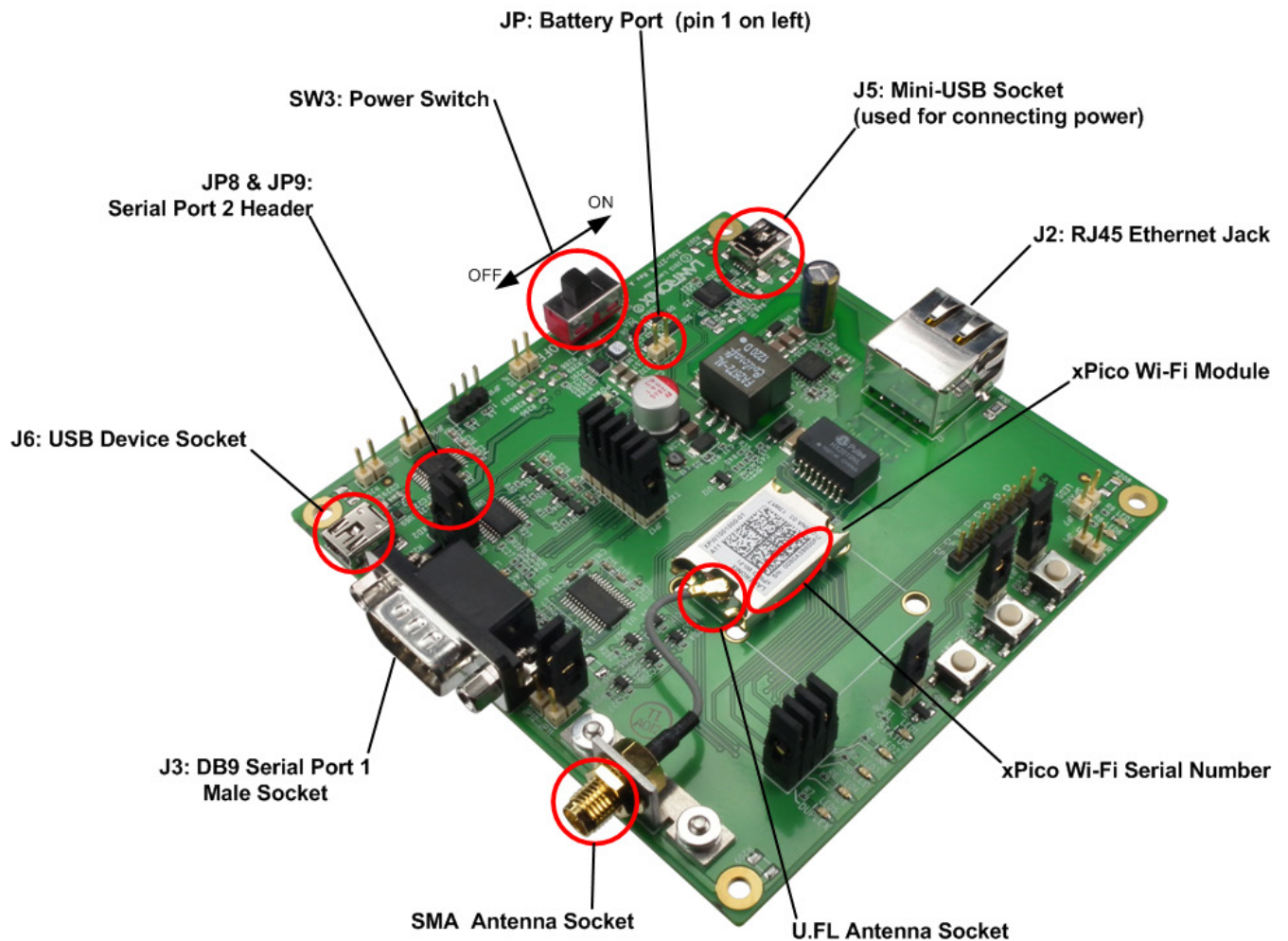


Figure 5: xPico Wi-Fi SMT Evaluation Board Layout

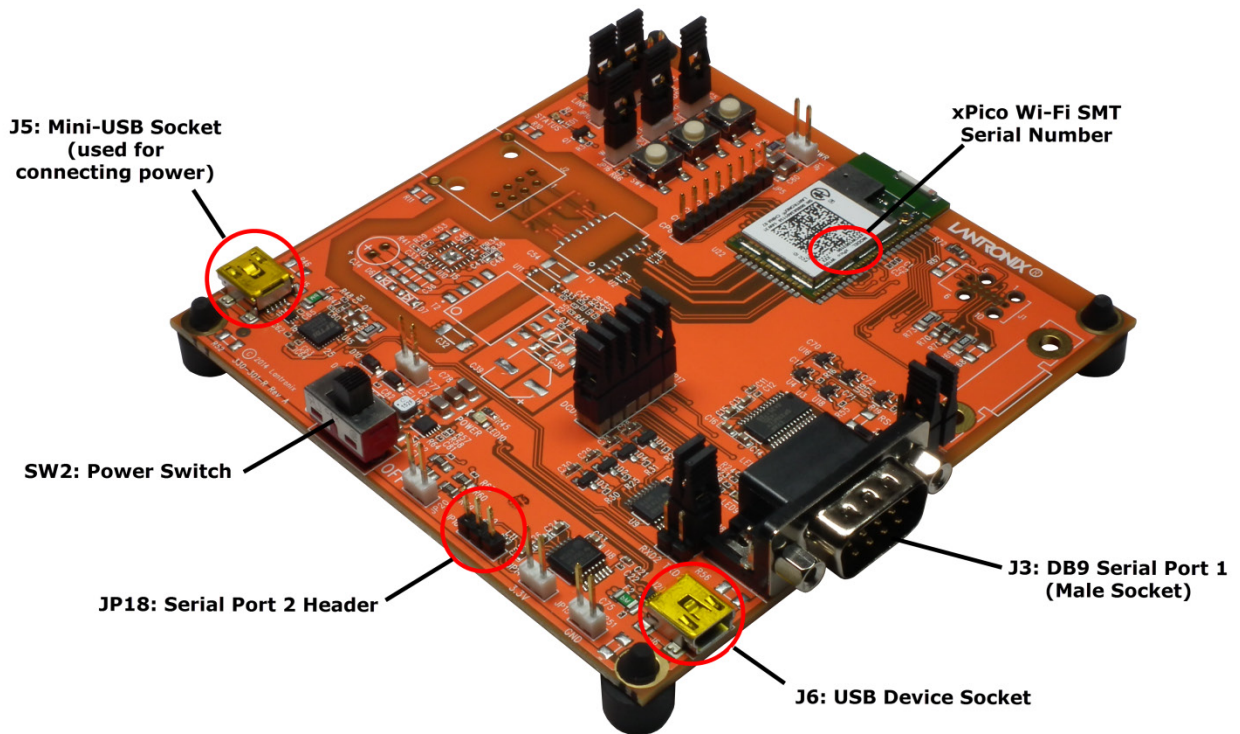


Table 1: xPico Wi-Fi Embedded Device Server Components

Component	Description
xPico Serial Number	Also the module MAC Address. The last six digits are used in the default SSID for Soft AP mode.
u.FL Socket	Used to connect either the SMA antenna cable or the alternative PCB strip antenna to the xPico Wi-Fi Module.
SMA	If using External antenna attach at this point.
SW3	Power switch, turns power on and off to the Evaluation PCB.
J5	Mini-USB socket used for connecting power to the Evaluation Kit or to connect to the xPico module serial port 2 via an on-board USB to serial converter
JP19 (pin 1 +, pin 2 GND)	Battery Port (2.2 to 5.5V) provides power to the xPico Wi-Fi Module via on board DC to DC converter.
J3	DB9 for Serial Port 1
JP11 and JP12	Leave JP11 and JP12 open for RS232 mode on serial port 1. Install jumper on JP11 for RS422 (4-wire) mode. Install JP11 and JP12 for RS485 (2 wire mode)
JP17	Serial Port 1 break-out header. Leave jumpers installed to route module signals to J3 DB9 serial port
JP18	Serial Port 2 RS232 header. Pin 1 TX(out), pin 2 GND, pin 3 RX(in)
JP8 and JP9	Jumpers for serial port 2 selection, install positions 1 to 2 to route serial port 2 to JP18 RS232 port. Install positions 2 to 3 to route serial port 2 to J5 USB to serial converter port.
J6	USB device port (xPico Wi-Fi only)
J2	RJ45 Ethernet Socket. This is not used with the xPico Wi-Fi module, it can be used if a xPico serial to Ethernet Device Server module is used in place of the xPico Wi-Fi
JP14, JP15	Voltage test pins. Monitor only. JP14 is 3.3V and JP15 is Ground



## Connecting an xPico Wi-Fi Device

### Connecting Power to the xPico Wi-Fi Evaluation Module

There are five methods of providing power to the Evaluation Kit PCB. Use one of the methods below.

1. Connect the provided universal power supply with mini-USB connector to J5.
2. Connect the USB to serial converter port J5 to a PC USB host port
3. Connect the USB device port J6 to a PC USB Host Port (xPico Wi-Fi only)
4. Connect a battery pack or external power supply (2.2V to 5.5V) between JP19 pin 1 (+) and JP19 pin 2 (-)
5. Connect Ethernet Port to a Power over Ethernet compliant PSE source (xPico module only)

### Wireless Connection Using Internal Soft AP

If using the XPW100100K-01 or the XPCW1002100K, select your antenna of choice. If ducktail, this can be screwed directly into the SMA socket located on the Eval Board. If the PCB antenna is to be used, the wire between the xPico Wi-Fi module u.FL connector and the on-board SMA connector has to be carefully disconnected and the plug on the PCB strip antenna should be inserted.

**Note:** the XPCW10031000K uses a version of the xPico Wi-Fi SMT which has an on-module antenna already fitted, so no action is necessary.



1. Once power and antenna is connected, turn on the board by moving switch SW3 in to the marked ON position.

By default the SoftAP mode is enabled with a default SSID of XpicoWiFi\_xxxxxxx. Where xxxxxx are the last six characters of the unique xPico Wi-Fi serial number. This number is available on the module label. For example if the serial number on label were 0080A398010E then the SSID would be XpicoWiFi\_98010E.

2. Using the Wi-Fi Connection Manager of your connecting device the above SSID should be presented as an available connection choice. Select the SSID and follow the device connection manager instructions to continue to connect.

The default security for xPico Wi-Fi SoftAP is WPA2 and the passphrase is XPICOWIFI. These defaults can be changed through the configuration web manager after the initial connection has been established.

- When prompted enter the passphrase to complete the Wi-Fi connection authentication process.

With a Wi-Fi client set to the above parameters, your device can connect directly to the xPico Wi-Fi Soft AP.

- Open a standard browser (E.g. Internet Explorer®, Firefox®, Chrome™, Safari® etc.) and in the address field of the browser enter the following URL;  
`xpicowifi.lantronix.com` or alternatively use `192.168.0.1` as the IP Address.
- When prompted enter the username of `admin` and password `PASSWORD` to access the Configuration and Management Web pages as shown below.

The screenshot displays the xPico Wi-Fi web management interface. The top header features the 'xPico Wi-Fi' logo and the 'LANTRONIX' brand name. A left-hand navigation menu includes options like QuickConnect, Status, AES Credentials, CPM, Clock, Device, Diagnostics, Discovery, File System, HTTP, Line, Modem Emulation, Monitor, NTP, Network, Power, SPI, Tunnel, Users, and WLAN Profiles. The main content area is titled 'Product Information' and contains several data tables.

Product Information		
Product Type:	xPicoWifi	
Firmware Version:	1.3.0.0R10	
Build Date:	Aug 8 2014 (11:16:36)	
Serial Number:	0080A39485C8	
Uptime:	4 days 04:49:42	
Permanent Config:	saved	
Network Settings		
MAC Address:	00:80:A3:94:85:C8	
Interface ap0		
State:	Up	
SSID:	XpicoWIFI_9485C8	
Security Suite:	WPA2	
IP Address:	192.168.0.1/24	
Interface wlan0		
Connection State:	Connected	
Radio Firmware Version:	2.4.1	
Active WLAN Profile:	sandrabullock	
IP Address:	172.19.100.142/16	
Default Gateway:	172.19.0.1	
Hostname:		
Primary DNS:	172.19.1.1	
Secondary DNS:	172.19.1.2	
Line Settings		
Line 1:	9600, None, 8, 1, None Command Line	
Line 2:	9600, None, 8, 1, None Trouble Log	
Tunneling		
	Accept Mode	Connect Mode
Tunnel 1:	Inhibited	Inhibited
Tunnel 2:	Inhibited	Inhibited

Copyright © Lantronix, Inc. 2007-2014. All rights reserved.

By clicking **Network > Network 1 > Link** to get to the **Configuration** page, the SSID, Security Suite Type and Security and passphrase can be modified. Modification to any of these parameters requires a reset/power cycle of the module in order to take effect.

xPico® Wi-Fi®
LANTRONIX®

- QuickConnect
- Status
- AES Credentials
- CPM
- Clock
- Device
- Diagnostics
- Discovery
- File System
- HTTP
- Line
- Modem Emulation
- Monitor
- NTP
- Network
- Power
- SPI
- Tunnel
- Users
- WLAN Profiles

ap0
wlan0

---

Interface
Link

---

Status
Configuration

### Access Point ap0 Configuration

<b>SSID:</b>	<Default>
<b>Channel:</b>	1
<b>Suite:</b>	WPA2
<b>Encryption:</b>	<input checked="" type="checkbox"/> CCMP <input type="checkbox"/> TKIP
<b>Passphrase:</b>	●●●●●●●●
<b>Mode:</b>	Always Up

These settings pertain to the **Access Point** in the device. **Changes take effect immediately.** After saving the changes, re-establish any connections to the Access Point.

Copyright © Lantronix, Inc. 2007-2014. All rights reserved.

It is recommended that you record any changes you make.

**SSID:** \_\_\_\_\_

**Security Suite:** \_\_\_\_\_

**Encryption:** \_\_\_\_\_

**Passphrase:** \_\_\_\_\_

## QuickConnect

QuickConnect offers the ability to configure the STA (WLAN Client) interface on xPico WiFi to establish connection to an active Access Point.

QuickConnect learns most of the connection properties from the available Access Points and prompts the user only for the security parameters and saves the settings under a corresponding new/existing WLAN profile for future autonomous operation of the WLAN Client interface.

xPico® Wi-Fi®
LANTRONIX®

- QuickConnect
- Status
- AES Credentials
- CPM
- Clock
- Device
- Diagnostics
- Discovery
- File System
- HTTP
- Line
- Modem Emulation
- Monitor
- NTP
- Network
- Power
- SPI
- Tunnel
- Users
- WLAN Profiles

### WLAN Link Scan

Network name:

Network Name	BSSID	Ch	RSSI	Security Suite
<b>Mart</b>	30:46:9A:F9:A9:03	7	-45 dBm	WPA2-CCMP-TKIP
<b>XpicoWiFi_9801D9</b>	00:80:A3:98:01:D9	3	-50 dBm	WPA2-CCMP
<b>xPicoWiFi_Mike</b>	00:80:A3:98:07:67	4	-52 dBm	WPA2-CCMP-TKIP
<b>cisco229</b>	1C:DF:0F:59:CB:50	5	-52 dBm	WPA2-CCMP
<b>skynet</b>	30:46:9A:0C:FA:A7	10	-53 dBm	WPA2-CCMP-TKIP
<b>vpn</b>	30:46:9A:0C:FA:A5	10	-53 dBm	WPA2-CCMP-TKIP
<b>tinkerbaby</b>	30:46:9A:0C:FA:A2	10	-53 dBm	WPA-TKIP
<b>pooh_mix</b>	30:46:9A:0C:FA:A1	10	-53 dBm	WPA2-CCMP-TKIP
<b>hollywood</b>	C0:8A:DE:71:0B:B8	4	-53 dBm	WPA2-CCMP
<b>Cisco76543</b>	58:6D:8F:95:80:0B	11	-54 dBm	WPA2-CCMP-TKIP
<b>sandrabullock</b>	30:46:9A:0C:FA:A6	10	-54 dBm	WPA2-CCMP-TKIP
<b>pradeep</b>	30:46:9A:0C:FA:A0	10	-54 dBm	WPA-TKIP
<b>XpicoWiFi_949F45</b>	00:80:A3:94:9F:45	10	-57 dBm	WPA2-CCMP
<b>LantronixVoice</b>	3C:08:F6:55:7E:72	6	-57 dBm	WEP
<b>tinkerbelle</b>	C0:8A:DE:B1:0B:B8	4	-58 dBm	WPA-TKIP
<b>tinkerwpa2</b>	C0:8A:DE:F1:0B:B8	4	-58 dBm	WPA2-CCMP
<b>tinkerwep</b>	C0:8A:DE:31:0B:B9	4	-58 dBm	WEP
<b>LantronixFlexWiFi</b>	08:CC:68:CD:8B:13	1	-61 dBm	WPA2-CCMP
<b>zyxelbridge</b>	00:13:49:54:3C:A2	11	-71 dBm	WPA2-CCMP-TKIP

This page shows a scan of the wireless devices within range of the device. Up to 20 networks sorted by RSSI are shown. It reports: Network name (Service Set Identifier), Basic Service Set Identifier, Channel number, Received Signal Strength Indication and Security Suite

Click on any network name for QuickConnect configuration.

Copyright © Lantronix, Inc. 2007-2014. All rights reserved.

Upon selection of the QuickConnect option, the xPico Wi-Fi scans and displays up to 20 wireless devices in order of strongest signal strength at the top. Click on a network name to view the connection to that desired Access Point.

**xPico® Wi-Fi®** LANTRONIX®

**QuickConnect** **WLAN Link Scan**

Network name:

Network Name	BSSID	Ch	RSSI	Security Suite
<u>Mart</u>	30:46:9A:F9:A9:03	7	█ █ █ █ █ -45 dBm	WPA2-CCMP-TKIP
<u>XpicoWiFi 9801D9</u>	00:80:A3:98:01:D9	3	█ █ █ █ █ -50 dBm	WPA2-CCMP
<u>xPicoWiFi Mike</u>	00:80:A3:98:07:67	4	█ █ █ █ █ -52 dBm	WPA2-CCMP-TKIP
<u>cisco229</u>	1C:DF:0F:59:CB:50	5	█ █ █ █ █ -52 dBm	WPA2-CCMP
<u>skynet</u>	30:46:9A:0C:FA:A7	10	█ █ █ █ █ -53 dBm	WPA2-CCMP-TKIP
<u>vpn</u>	30:46:9A:0C:FA:A5	10	█ █ █ █ █ -53 dBm	WPA2-CCMP-TKIP
<u>tinkerbaby</u>	30:46:9A:0C:FA:A2	10	█ █ █ █ █ -53 dBm	WPA-TKIP
<u>pooh_mix</u>	30:46:9A:0C:FA:A1	10	█ █ █ █ █ -53 dBm	WPA2-CCMP-TKIP
<u>hollywood</u>	C0:8A:DE:71:0B:B8	4	█ █ █ █ █ -53 dBm	WPA2-CCMP
<u>Cisco76543</u>	58:6D:8F:95:80:0B	11	█ █ █ █ █ -54 dBm	WPA2-CCMP-TKIP
<u>sandrabullock</u>	30:46:9A:0C:FA:A6	10	█ █ █ █ █ -54 dBm	WPA2-CCMP-TKIP
<u>pradeep</u>	30:46:9A:0C:FA:A0	10	█ █ █ █ █ -54 dBm	WPA-TKIP
<u>XpicoWiFi 949F45</u>	00:80:A3:94:9F:45	10	█ █ █ █ █ -57 dBm	WPA2-CCMP
<u>LantronixVoice</u>	3C:08:F6:55:7E:72	6	█ █ █ █ █ -57 dBm	WEP
<u>tinkerbell</u>	C0:8A:DE:B1:0B:B8	4	█ █ █ █ █ -58 dBm	WPA-TKIP
<u>tinkerwpa2</u>	C0:8A:DE:F1:0B:B8	4	█ █ █ █ █ -58 dBm	WPA2-CCMP
<u>tinkerwep</u>	C0:8A:DE:31:0B:B9	4	█ █ █ █ █ -58 dBm	WEP
<u>LantronixFlexWiFi</u>	08:CC:68:CD:8B:13	1	█ █ █ █ █ -61 dBm	WPA2-CCMP
<u>zyxelbridge</u>	00:13:49:54:3C:A2	11	█ █ █ █ █ -71 dBm	WPA2-CCMP-TKIP

This page shows a scan of the wireless devices within range of the device. Up to 20 networks sorted by RSSI are shown. It reports: Network name (Service Set Identifier), Basic Service Set Identifier, Channel number, Received Signal Strength Indication and Security Suite

Click on any network name for QuickConnect configuration.

Copyright © Lantronix, Inc. 2007-2014. All rights reserved.

When the selected Access Point profile displays, enter the password and click **Submit** to directly connect to the Access Point and to add the profile and configuration details to the WLAN profiles.

**WLAN Profile "XpicoWiFi\_980116"**

Connect To	
Network Name (SSID):	XpicoWiFi_980116
BSSID:	00:80:A3:98:01:16
Security Suite:	WPA2-CCMP
Signal Strength:	-45 dBm

Security	
Key Type:	<input checked="" type="radio"/> Passphrase <input type="radio"/> Hex
Password:	<input type="text"/>

Advanced

Apply Submit

Copyright © Lantronix, Inc. 2007-2014. All rights reserved.

Once added, the Quick Connect profile is connected and is accessible and configurable through WLAN Profiles.

**WLAN Profile Management**

View or Edit Delete

sandlock

Create new WLAN Profile

Copyright © Lantronix, Inc. 2007-2014. All rights reserved.

Click the new WLAN profile to view and modify settings.

**xPico® Wi-Fi®**
LANTRONIX®

<ul style="list-style-type: none"> <li>QuickConnect</li> <li>Status </li> <li>AES Credentials</li> <li>CPM</li> <li>Clock</li> <li>Device</li> <li>Diagnostics</li> <li>Discovery</li> <li>File System</li> <li>HTTP</li> <li>Line</li> <li>Modem Emulation</li> <li>Monitor</li> <li>NTP</li> <li>Network</li> <li>Power</li> <li>SPI</li> <li>Tunnel</li> <li>Users</li> <li style="background-color: #f00; color: white; padding: 2px;">WLAN Profiles</li> </ul>	<h3 style="margin: 0;">WLAN Profile sandrabullock Configuration</h3> <table border="1" style="width: 100%; border-collapse: collapse;"> <thead> <tr style="background-color: #333; color: white;"> <th colspan="2">Basic</th> </tr> </thead> <tbody> <tr> <td style="padding: 2px;">Network Name:</td> <td style="padding: 2px;"><input type="text" value="sandrabullock"/></td> </tr> <tr> <td style="padding: 2px;">State:</td> <td style="padding: 2px;"><input checked="" type="radio"/> Enabled <input type="radio"/> Disabled</td> </tr> <tr style="background-color: #333; color: white;"> <th colspan="2">Security</th> </tr> <tr> <td style="padding: 2px;">Suite:</td> <td style="padding: 2px;"><input type="text" value="WPA2"/></td> </tr> <tr> <td style="padding: 2px;">WPAx Key Type:</td> <td style="padding: 2px;"><input type="text" value="Passphrase"/></td> </tr> <tr> <td style="padding: 2px;">WPAx Passphrase:</td> <td style="padding: 2px;"><input type="text" value="●●●●●●●●"/></td> </tr> <tr> <td style="padding: 2px;">WPAx Encryption:</td> <td style="padding: 2px;"><input checked="" type="checkbox"/> CCMP <input checked="" type="checkbox"/> TKIP</td> </tr> <tr style="background-color: #333; color: white;"> <th colspan="2">Advanced</th> </tr> <tr> <td style="padding: 2px;">TX Power Maximum:</td> <td style="padding: 2px;"><input type="text" value="17"/> dBm</td> </tr> <tr> <td style="padding: 2px;">Power Management:</td> <td style="padding: 2px;"><input type="radio"/> Enabled <input checked="" type="radio"/> Disabled</td> </tr> </tbody> </table>	Basic		Network Name:	<input type="text" value="sandrabullock"/>	State:	<input checked="" type="radio"/> Enabled <input type="radio"/> Disabled	Security		Suite:	<input type="text" value="WPA2"/>	WPAx Key Type:	<input type="text" value="Passphrase"/>	WPAx Passphrase:	<input type="text" value="●●●●●●●●"/>	WPAx Encryption:	<input checked="" type="checkbox"/> CCMP <input checked="" type="checkbox"/> TKIP	Advanced		TX Power Maximum:	<input type="text" value="17"/> dBm	Power Management:	<input type="radio"/> Enabled <input checked="" type="radio"/> Disabled	<p>These settings pertain to a WLAN Profile on the device.</p> <p>Use the <b>Apply</b> button to try out settings on the WLAN without saving them to Flash. If the settings do not work, when you reboot the device, it will still have the original settings.</p> <p>Use the <b>Submit</b> button to both update the WLAN settings and save them to Flash.</p> <p>If the device is connecting to an access point on a different wireless channel, current connection to the soft AP interface of the device may be dropped due to the switch of channel. Reconnect to the soft AP interface in order to continue access to the device.</p>
Basic																								
Network Name:	<input type="text" value="sandrabullock"/>																							
State:	<input checked="" type="radio"/> Enabled <input type="radio"/> Disabled																							
Security																								
Suite:	<input type="text" value="WPA2"/>																							
WPAx Key Type:	<input type="text" value="Passphrase"/>																							
WPAx Passphrase:	<input type="text" value="●●●●●●●●"/>																							
WPAx Encryption:	<input checked="" type="checkbox"/> CCMP <input checked="" type="checkbox"/> TKIP																							
Advanced																								
TX Power Maximum:	<input type="text" value="17"/> dBm																							
Power Management:	<input type="radio"/> Enabled <input checked="" type="radio"/> Disabled																							

Copyright © Lantronix, Inc. 2007-2014. All rights reserved.

## Reference Documentation

For more information on the use and operation of the xPico Wi-Fi Device Server please refer to the latest product documents which are available on the Product Website. [www.lantronix.com/support/documentation](http://www.lantronix.com/support/documentation).