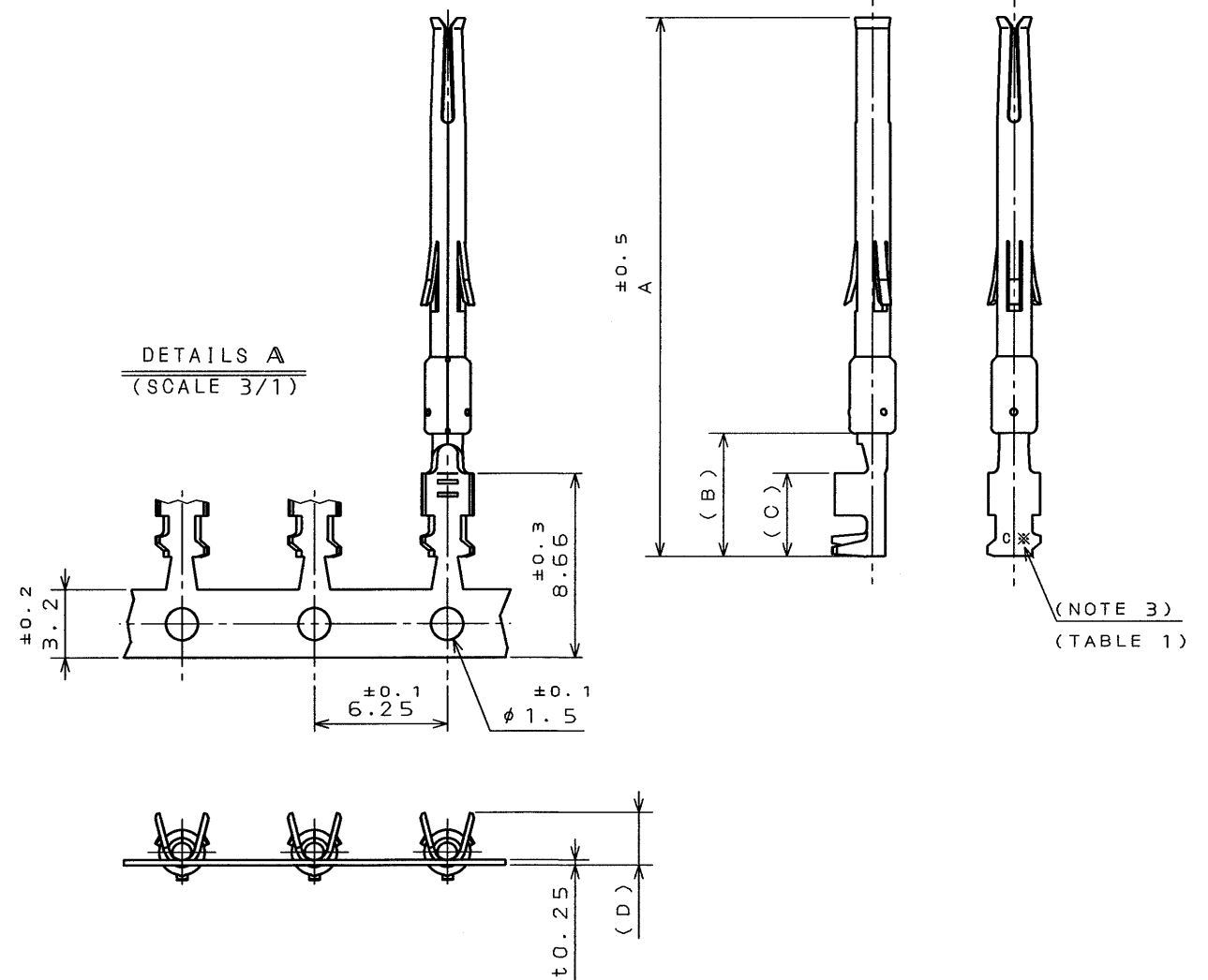
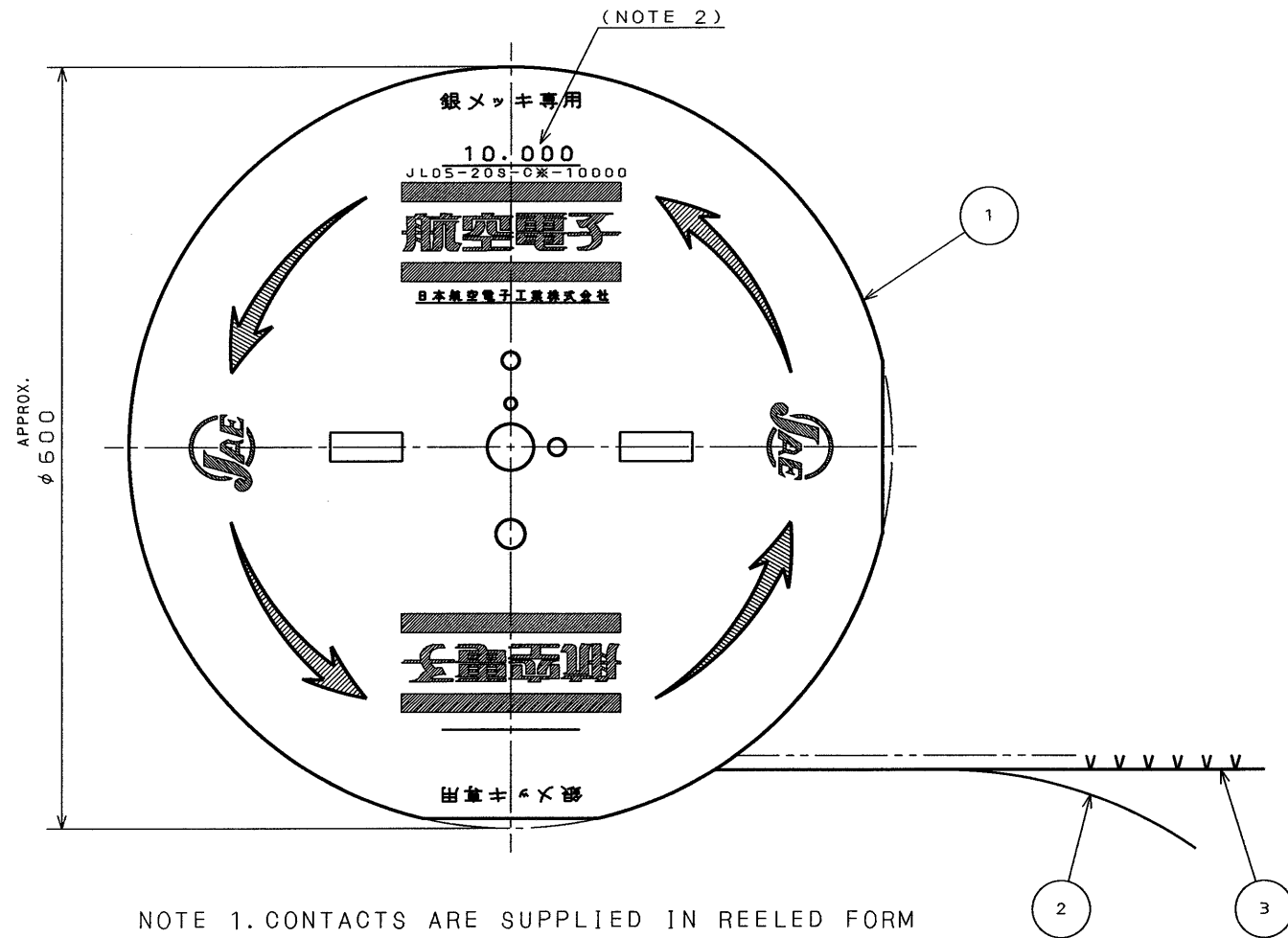
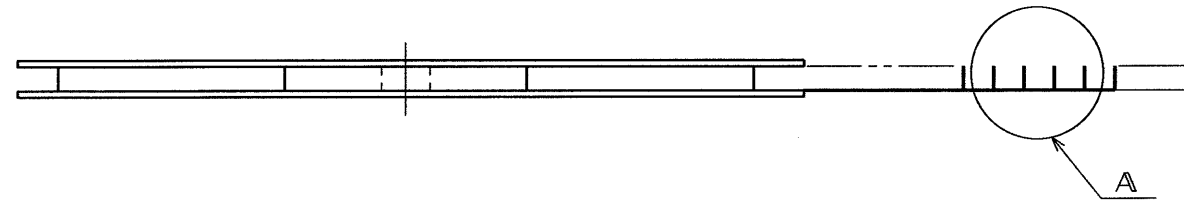


SJ025423-E

DWG. NO.

SYM.	DCN NO.	DESCRIPTION	DATE	DRAWN	CHECKED	APP'D	APP'D



NOTE 1. CONTACTS ARE SUPPLIED IN REELED FORM WITH 10000 CONTACTS PER REEL.  
 NOTE 2. PART DESCRIPTION AND NUMBER OF CONTACTS OF A REEL ARE MARKED ON THE MAGAZINE AS SHOWN.  
 NOTE 3. A CRIMP TYPE IS MARKED AS INDICATED.

TABLE 1

CRIMP TYPE	APPLICABLE WIRE		DIMENSIONS			
	WIRE SIZE	INSULATION OUTER DIA.	A	B	C	D
C 1	AWG#18~22 (0.8mm~0.3mm)	φ 2.3MAX.	28.43	5.81	3.92	2.49
C 2	AWG#22~26 (0.3mm~0.13mm)	φ 1.0~φ 1.7	29.04	6.42	4.53	2.7

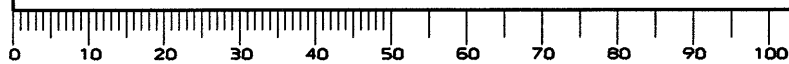
NOTE 4. FOR AN INDIVIDUAL CONTACT, SEE DWG. NO. SJ025421.

DIMENSIONS ARE IN MILLIMETERS  
 TOLERANCES ON: (INCHES)

DIMENSION	ANGLES
. ±	X° ±
.X ±	X°X' ±
.XX ±	CONCENTRICITY
.XXX ±	WITHIN T.I.R.

3	#20 SOCKET CONTACT	10000	COPPER ALLOY	SILVER PLATING	
2	TAPE	1	PAPER		
1	MAGAZINE	1	PAPER		
ITEM	DESCRIPTION	Q'TY	MATERIAL	FINISH	REMARKS
REFERENCE DOCUMENT		DATE	SCALE	MATERIAL WEIGHT	
		13. Mar. '95	5	JAE-CONNECTOR.COM	
MATERIAL		DRAWN	TITLE		
		S. NANA O	ST-JL05-20S		
TREATMENT		CHECKED	-C*-10000		
		T. MORITA	(MAGAZINE ASSEMBLY)		
FINISH		APP'D	SERIES		
		M. Takagi	JL05		
				MUSASHINO, AKISHIMA-SHI TOKYO, JAPAN	
				DWG. NO.	
				SJ025423-E	

DOF-C-143



CSP-95-100-50927

SIZE A3